

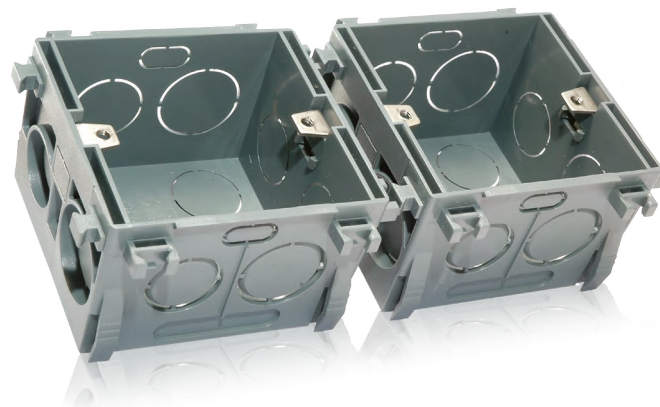
Mounting Brackets, Boxes & Transformers

Mounting brackets, 100V line transformers & single gang boxes for VC volume controls

MOUNTING HARDWARE

iBox Single Gang Box for VC Volume Control

iBox single gang box for VC volume control flush mount ▶



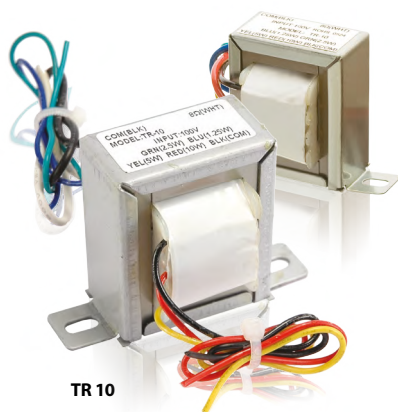
Product Name	iBox
Material	Plastic
External Dimensions	80 mm x 78 mm x 52 mm
Internal Dimensions	68 mm x 70 mm x 50 mm
Weight	60 g
Colour	Black (RAL9017)
Mounting type	Flush mount

100 V Line Transformers

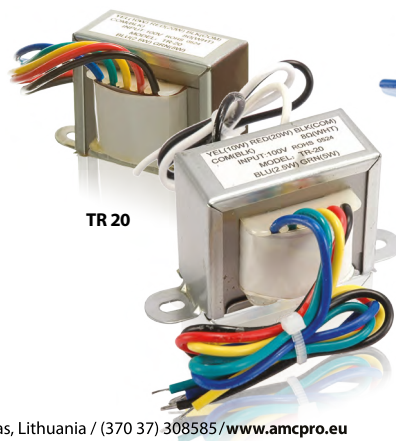
Transformers for 100 V speaker lines with secondary winding for 8Ω speakers.

Speaker line maximum load - 10W, 20W, 30W, 50W ▼

Technical Specifications	TR-10	TR-20	TR-30	TR-50
Power	10W	20W	30W	50W
Transformer power taps	10 W - 5 W - 2,5 W - 1,25 W	20 W - 10 W - 5 W - 2,5 W	30W	50W
Load for secondary winding	8Ω	8Ω	8Ω	8Ω
Weight	0,3 kg	0,3 kg	0,3 kg	0,6 kg
Dimensions	50 mm x 43 mm x 40 mm	50 mm x 43 mm x 43 mm	50 mm x 43 mm x 41 mm	60 mm x 50 mm x 52 mm
Cable length	200 m	200 mm	190 mm	200 mm



TR 10



TR 20



TR 30



TR 50