

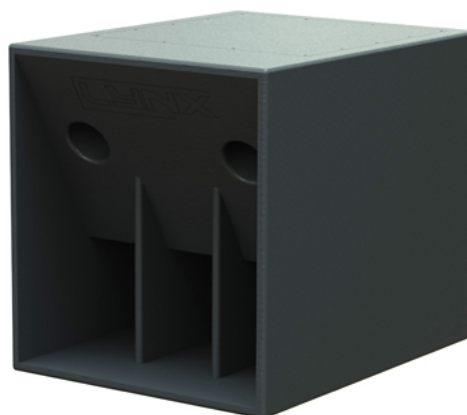
DS-18S



DATA SHEET

pag.1/1 V.13.04

- ▶ incredible power to size ratio
- ▶ Colour and finishing options
- ▶ High Performance 1400W



APPLICATIONS

- Club and Bar installs
- Multi media spaces

GENERAL DESCRIPTION

The DS-18S is an extremely high power sub bass cabinet providing exceptional low frequency reinforcement for the DS-12. It uses one 18" (4" DUO voice coil) transducer with aluminium demodulating ring in direct radiation bass reflex configuration.

Manufactured as standard with premium birch plywood and finished with high-resistant water based black paint it can also be manufactured in any colour or finish to compliment any install design.

SPECIFICATIONS

COMPONENTS	LF 1 x 18"
FREQUENCY RANGE	30 Hz - 250 Hz
FREQUENCY RESPONSE	35 Hz - 200 Hz
MAX SPL	133 dB / 136 dB Peak
RATED POWER RMS	1400 W
PROGRAM POWER	2800 W
COVERAGE	360° single unit
NOMINAL IMPEDANCE	8 Ohms
CONNECTORS	2 x Neutrik Speakon NL4MP
CONSTRUCTION	18 mm Premium Birch plywood
FINISH	Different colours and finishing options
DIMENSIONS (H x W x D)	639 x 585 x 733 mm
WEIGHT	56 Kg (123 lbs)

Dimmensions in mm.

