

DK90T

Loudspeaker ideal for high fidelity audio reproduction designed for wall mounting.

LOUDSPEAKERS

- System type: wall speaker

COMPONENTS

- Low frequency: 5"
- High frequency: 1"

FEATURES

- AES/program power: 40/80W
- Input 100 V: 2.5/5/10/20/40W

ACOUSTICAL SPECIFICATIONS

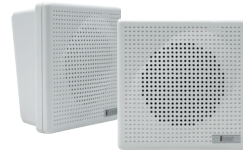
- Sensitivity: 90dB @1W/1m (free field)
- Impedance: Low impedance 8 Ohm
- Constant voltage: 70/100 V
- Frequency response: 70÷20.000Hz (±3dB)

INPUT/OUTPUT CONNECTORS

- Input signal: terminal with wire

PHYSICAL

- Dimensions (WxHxD): 196x295x157mm
- Weight: 4.1kg



DK30T

Micro loudspeaker ideal for high-fidelity sound reproduction designed for wall mounting.

LOUDSPEAKERS

- System type: wall speaker

COMPONENTS

- Full range: 3"

FEATURES

- AES/program power: 3/5W
- Input 100 V: 1.5/3W

ACOUSTICAL SPECIFICATIONS

- Sensitivity: 92dB @1W/1m (free field)
- Constant voltage: 70/100 V
- Frequency response: 150÷15.000Hz (±3dB)

INPUT/OUTPUT CONNECTORS

- Input signal: terminal with wire

PHYSICAL

- Dimensions (WxHxD): 130x130x60mm
- Weight: 0.4kg



DK88T

Bidirectional loudspeaker ideal for high-fidelity audio reproduction designed for ceiling and wall fixing.

LOUDSPEAKERS

- System type: bidirectional wall speaker

COMPONENTS

- Full range: 2x6.5"

FEATURES

- AES/program power: 20/40W
- Input 100 V: 10/20W

ACOUSTICAL SPECIFICATIONS

- Sensitivity: 92dB @1W/1m (free field)
- Constant voltage: 70/100 V
- Frequency response: 150÷14.000Hz (±3dB)

INPUT/OUTPUT CONNECTORS

- Input signal: terminal with wire

PHYSICAL

- Weight: 3.4kg



DK80T

Loudspeaker ideal for high-fidelity audio reproduction designed ceiling and wall fixing.

LOUDSPEAKERS

- System type: wall speaker

COMPONENTS

- Full range: 4"

FEATURES

- AES/program power: 10/20W
- Input 100 V: 2.5/5/10V

ACOUSTICAL SPECIFICATIONS

- Sensitivity: 91dB @1W/1m (free field)
- Constant voltage: 70/100V
- Frequency response: 150÷16.000Hz (±3dB)

INPUT/OUTPUT CONNECTORS

- Input signal: terminal with wire

PHYSICAL

- Weight: 1.56kg



DC64T

Aluminium column speaker, reproducing speech with great intelligibility.

LOUDSPEAKERS

- System type: column loudspeaker with transformer

COMPONENTS

- Full range: 8x3"

FEATURES

- AES/program power: 40/80W
- Input 100 V: 20/40V

ACOUSTICAL SPECIFICATIONS

- Sensitivity: 94dB @1W/1m (free field)
- Constant voltage: 70/100V
- Frequency response: 180÷16.000Hz (±3dB)

INPUT/OUTPUT CONNECTORS

- Input signal: terminal with wire

PHYSICAL

- Dimensions (WxHxD): 105x690x75mm
- Weight: 3.52kg



DC63T

Aluminium column speaker, reproducing speech with great intelligibility.

LOUDSPEAKERS

- System type: column loudspeaker with transformer

COMPONENTS

- Full range: 6x3"

FEATURES

- AES/program power: 30/60W
- Input 100 V: 15/30V

ACOUSTICAL SPECIFICATIONS

- Sensitivity: 92dB @1W/1m (free field)
- Constant voltage: 70/100V
- Frequency response: 200÷16.000Hz (±3dB)

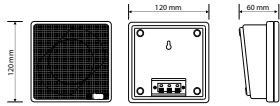
INPUT/OUTPUT CONNECTORS

- Input signal: terminal with wire

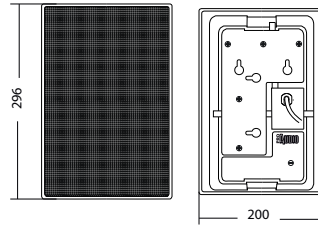
PHYSICAL

- Dimensions (WxHxD): 105x550x75mm
- Weight: 2.74kg

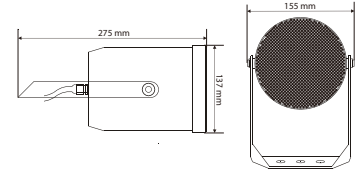
DK30T - Technical Drawings



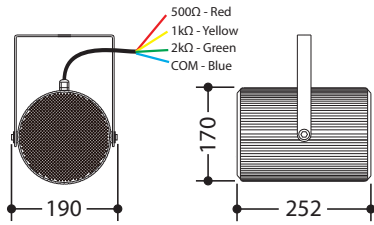
DK90T - Technical Drawings



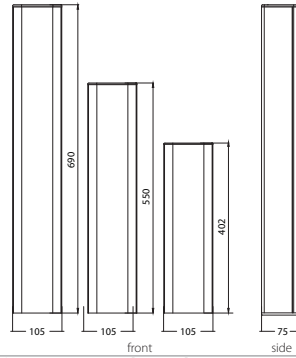
DK80T - Technical Drawings



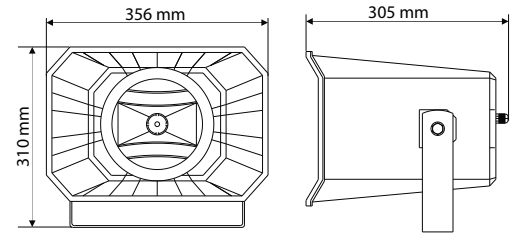
DK88T - Technical Drawings



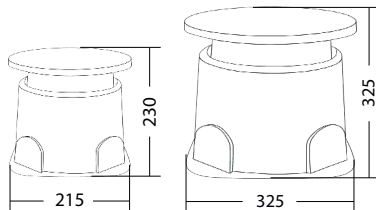
DC62T / DC63T / DC64T - Technical Drawings



HD100T - Technical Drawings



GS62T / GS63T - Technical Drawings



GR62T / GR63T - Technical Drawings

