



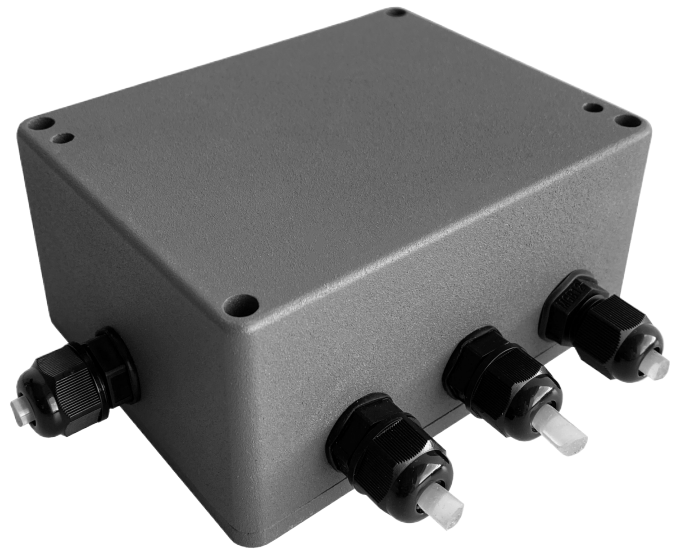
Splitter DU0 Arma

Multi-channel DMX splitter/repeater

Splitter Arma DU0 is dual-channel device with 6 DMX input/output ports that operates as a regular splitter with 1 input and 5 outputs as well as two separated 1-to-2 splitters.

All input and output channels are galvanically isolated from each other.

The device is suitable for outdoor use and has the highest levels of dust and moisture protection. The device is powered by 100-250V industrial AC mains, power consumption is less than 5 watts. Input, output DMX cables and power cable are connected to the device body via cable glands.



Application

Supports bidirectional communication (DMX512 and RDM)

Die-cast, waterproof metal casing

No buttons

Time-tested in severe weather conditions

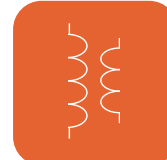
Surface/truss mount



Supports RDM



UltraStart



Galvanically Isolated Ports



Natural Heat Convection



Highest Ingress Protection

Splitter Arma DUO

Multi-channel DMX splitter/repeater

Version: 2.10
21 Jul 2020

Technical Specifications

Mechanical

Housing: solid case

Material: metal

Dimensions, mm: 115(D) x 55(H) x 90(W)

Mass: 0.85 kg

Mounting: surface, truss

Power & Electrical

Power supply: ~90-250 VAC, 50/60 Hz

Input Power (max): 5 W

Mains Fuse: 0.5 A

Environmental

Operating Temperature: -40...+70°C

Storage Temperature: -50...+80°C

Operating Relative Humidity (max): 100%

IP Rating: IP 65

Certification: CE, RoHS

Warranty: 36 month (return to base)

Control / Data Connections

Supported protocols: DMX512, RDM

DMX data refresh rate: 44 Hz

Inputs / Outputs

DMX input ports: 1 or 2 isolated

DMX output ports: 4 or 5 isolated

DMX connectors: 15EDGVC terminal blocks

Configuration / Indication

Setup: by DIP switchers

Indication: LED for DMX input

Package Contents

Splitter Arma DUO

Connectors kit

Product Line

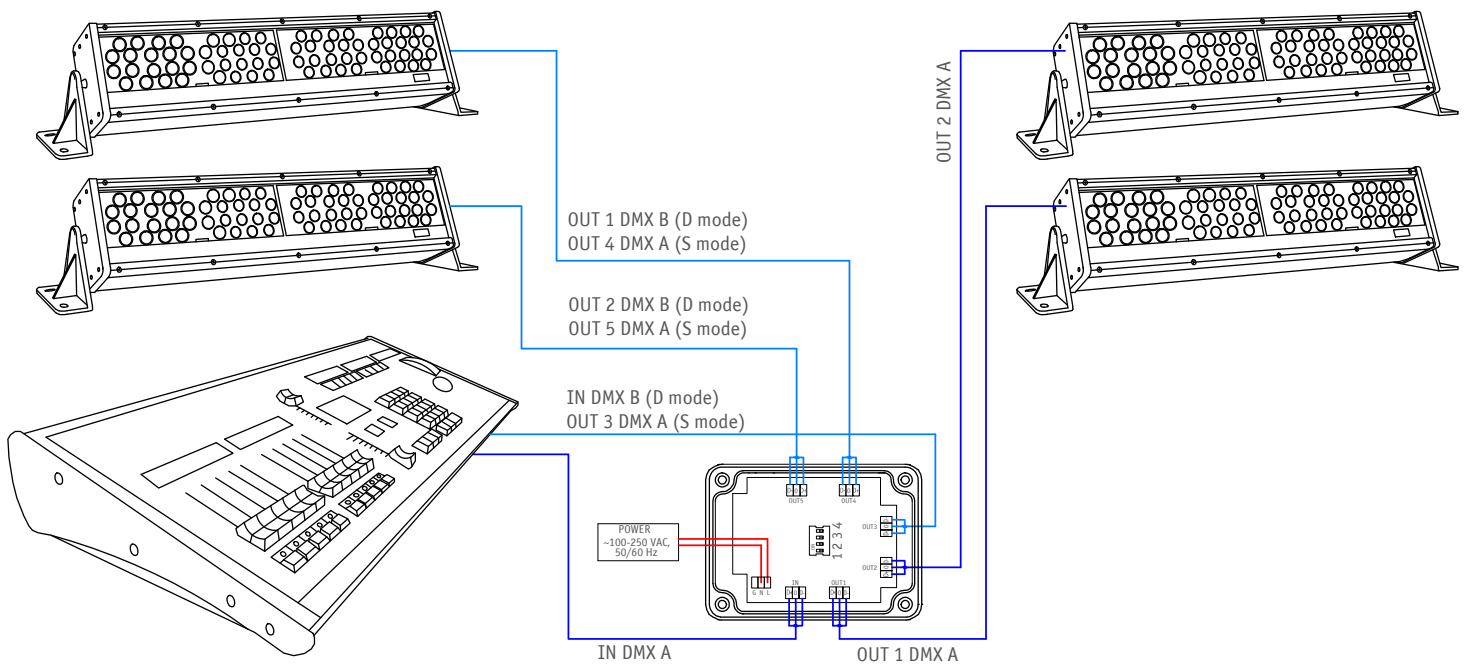
Name	Modification	Product code
Splitter Arma DUO	2 DMX input/4 DMX outputs	SPAD-0-2D4D

Splitter Arma DUO

Multi-channel DMX splitter/repeater

Version: 2.10
21 Jul 2020

Connection Scheme



DIP switcher

	ON	OFF
SW1	RDM enabled	RDM disabled
SW2	Dual splitter mode (D-mode)	Single splitter mode (S-mode)
SW3	Full transparent mode	Dedicated input(s) mode
SW4	Bus indication mode	DMX512 indication mode

LED indication

	DMX512 mode	BUS mode
Green	Valid DMX signal	Bus is idle
Red	No DMX signal	Bus is busy
Off	Device/Section doesn't work	Device/Section doesn't work

Accessories

Name

Truss mounting kit (Solid, Arma)
Surface mounting kit (Solid, Arma)

Product code

DMX-MCA-1-113
DMX-MCA-2-120



+ 44 (0) 208 991 33 19
office@sundrax.com
www.sundrax.com