

# PDU16-PC

16A AC PDU WITH POWER MONITOR



## 2U Rack Mounting PDU with Over Load Protection & Power Monitoring

2U high Horizontal Mounting Unit is designed to provide a versatile hook-up for the distribution of AC power within Multimedia Theatre & Touring rack applications.

### Circuit A

- Main Input** C-FORM 240V 16A IP44 Panel Mount Appliance Inlet
- Protection** Illuminated Circuit Breaker overload protection between dual 16A sockets
- Output** C-FORM 240V 16A IP44 Panel Mount Appliance Outlet

### Circuit B

- Output** 8 Neutrik powerCon sockets with a Maximum Combined Load 16A.
- Protection** Illuminated Circuit Breaker 16A overload protection
- LCD Monitor** LCD Power Monitor giving Voltage, Current , Power, Energy Levels & Overload Alarm.

**Earth Link** M4 Screw Terminal for Rack Grounding

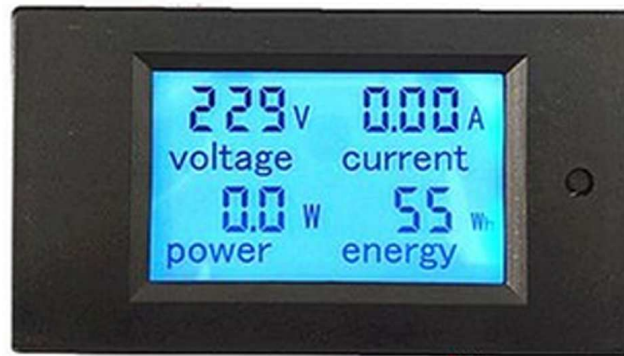
### Usage

Nominal Voltage:	110V-240V
Usable Voltages	110V~240V full range
Frequency:	50/60HZ full range
Max. A/C Output:	Current 16A
Case Size:	88 x 140 x 430mm (O.A.483mm)
Weight:	2Kg

**Compliance** All components used in this conform to current RoHS, CE & UL certification - E&OE  
(EMI:EN55022 (CISPR22) Class B; EN61000-3-2,3 EMS:EN61000-4-2,3,4,5,6,8,11; Light industry level, criteria A)



## Power Monitoring Features

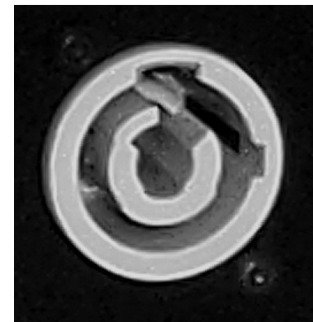


### Functions

1. Electrical parameter measurement function (voltage, current, active power, energy)
2. Overload alarm function (over power alarm threshold, backlight and power flashing to alarm).
3. Power alarm threshold preset function (can set power alarm threshold).
4. The reset function of energy key.
5. Stores data when powered off.
6. Backlight function.

## NEUTRIK POWERCON CONNECTOR GUIDE

Channel B on the PDU16-PC model has 8 **powerCON** sockets compatible with plug Neutrik Plug **NAC3FCB**



**pennELCOM®**

*Designed & Made in the UK by Penn Elcom Ltd*

9-10 Parsons Road, Parsons Industrial Estate, Washington Tyne & Wear, NE37 1HB, UK  
0191 416 1717 or [www.penn-elcom.com](http://www.penn-elcom.com)