

---

# XLR Daisy-chaining Box

The XLR Daisy chaining box is used to link Trio4 Lights together, so that they can be powered and controlled by a powerline PSU.

The box locks to the base of each music stand, connecting one stand to the next in a daisy chain. Each XLR Daisy chaining box comes complete with 2.3m of integral cable. The Powerline PSU has two XLR outlet sockets which enable two separate daisy chains, with a total of up to 17 lights, to be plugged into one PSU. Multiple PSUs can be used for a large set up.

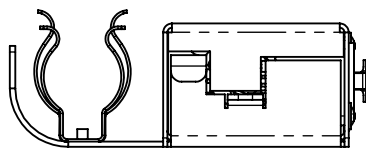
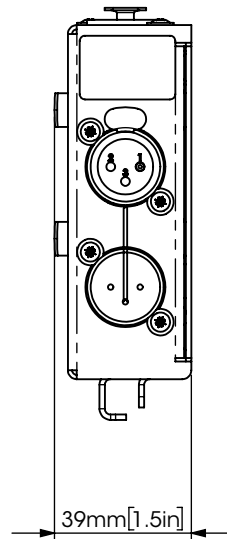
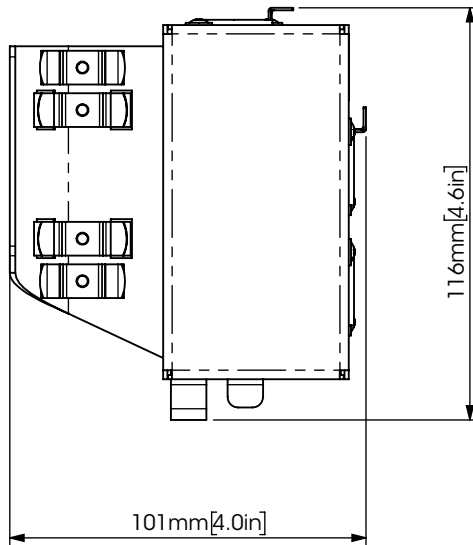
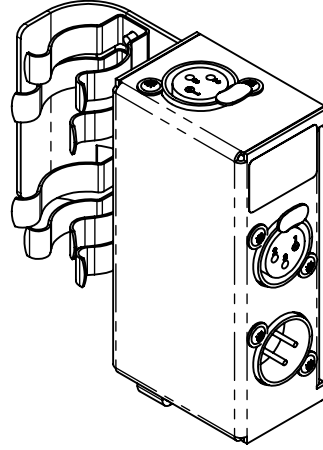
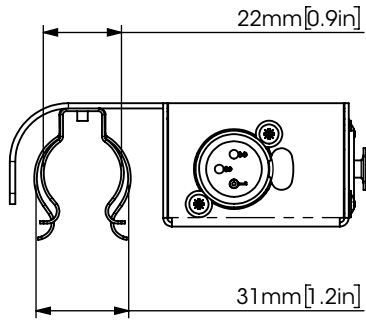
The XLR boxes can be fitted to almost any music stand's stem. They are made of nylon coated steel which provides unrivalled strength and durability.

---



**RAT**stands

# Detailed Specification



# Detailed Specification

## Specifier's description

XLR Box to daisy chain multiple music stand lights to be powered and controlled using one PSU. Made from nylon coated steel, each box has a 2.3m XLR cable as standard.

### Construction

Casing Material	Steel
Coating	200µm polyester resin

### Dimensions

Length	101mm [4in]
Width	39mm [1.5in]
Height	116mm [4.6in]
Weight	0.3kg [0.7lbs]

### Physical characteristics

Input connector type	Customised 2 pin XLR plug
Output connector type	2 x Customised 2 pin XLR socket

### Electrical characteristics

Insulation class	Class 3
SELV (Separated Extra Low Voltage) output	YES

### General

Warranty	2 years
Part number	74Q311
Markings	CE