

Mosaico FX100

100W IP66 modular LED image projector with dual effect wheel and one gobo slot



Mosaico FX100 is an 100W white source LED IP66 image projector, engineered to be the modular platform to add building blocks to design your creative architectural lighting landscape.

Mosaico FX100 is supplied with two controllable effect wheels on board made in structured glass material to animate your projection, with linear motion control for creating reflected water, blowing fire or northern lights effects. The kit contains also one indeaxable gobo holder and a colour holder both with magnetic attachment.

Mosaico FX100 is compatible with a wide range of high definition optics, each optimized for the required application (animation or image projection): 15°, 30°, 50° and 70°.

This unit can be controlled via DMX, both wired and wireless and also easily operated locally through the simplified stand alone operations.

Please note that **Mosaico FX100** do not ship with a lens or other images or colors. Choose from the available lenses when ordering to meet your design requirements.

MAIN FEATURES

- 100W White LED Source Image and Effect light projector
- 15°, 30°, 50° and 70° available optics (not included), Image or Effects optimized
- DMX, CRMX Wireless and local stand alone control

VERSIONS

Code	Housing
MOSAICOFX100GY	Gray
MOSAICOFX100BK	Black

TECHNICAL SPECIFICATION

LIGHT SOURCE

- Source:100 W high-power white LED
- CCT:8'000K
- Luminous flux:(15°) 3'174 lm; (30° - WT) 3'246 lm; (30° - GB) 3'029 lm; (50° - WT) 3'646 lm; (50° GB) 2'217 lm; (70°) 2'367 lm @full
- Lux:(15°) 1'612 lx; (30° - WT) 954 lx; (30° - GB) 114 lx; (50° - WT) 345 lx; (50° GB) 179 lx; (70°) 176 lx @5 m full
- Source life expectancy: > 30.000 hrs (L70B10 @Ta 25° C / 77° F)

OPTICS

- Optics:interchangeable - see available accessories
- Focus: manual

COLOUR SYSTEM

- Colour mixing: cold white
- Colour wheel:1 color with color holder accessory (color not included)

DYNAMIC EFFECTS

- Control Resolution: 16-bit dimmer
- Animation wheel:2 interchangeable wheels with indexing and CW and CCW rotation with variable speed - see available accessories
- Rotating gobos:gobo holder with manual adjustable index position system (gobo not included) - see available accessories
- Gobo size (BW):outer: 26,9 mm - image: 22 mm
- Gobo size (Color):outer: 26,9 mm - image: 20,5 mm
- Static mode: selection of static dimmer and effects rotation mode

BODY

- Body: weatherproof IP66 construction
- Body colour: RAL 9006 or RAL 9004
- Other:Inspectable cover window for effects and gobo replacement and maintenance

CONTROL

- Protocols: DMX512, RDM, CRMX + WDMX, 3 push encoder
- Stand Alone:3 push encoder

- DMX channels:8 channel
- Wireless Control: included, LumenRadio Timo Fx DMX/RDM compatible with both CRMX (Lumen Radio) and W-DMX (Wireless DMX)
- RDM: RDM for remote monitoring and settings
- Display: user interface through DATAMASTER external coder (not included)
- Firmware upgrade: yes, via USB - DMX interface (UPBOX2) not included
- Master/Slave: for synchronised operation of more units linked in a chain

ELECTRONICS

- Dimmer: linear 0 ~ 100%, electronic and manual knob dimmer
- Dimmer curves: selectable dimming modes available
- Strobe / shutter:1-30 Hz, electronic
- Operating temperature: -20° C / +45° C (-4° F / +113° F)
- LED Control: flicker free frequency with adjustable PWM
- Selectable PWM: 600 ~ 25.000 Hz

ELECTRICAL

- Mains power supply: 100-240V - 50/60Hz
- Max power consumption:127 W
- Output (at 230V):25 units on a single power line
- Power factor:>0.95

PHYSICAL

- IP rating:66 for outdoor installations
- Cooling: active, silent operation
- Suspension and fixing: bracket for hanging and positioning
- Adaptors: XLR and BARE END 16A adaptors included
- Signal connection:35 cm moulded IP signal IN/OUT connectors
- Power connection:35 cm moulded IP power IN/OUT connectors
- Dimensions (WxHxD):224x261x221 mm
- Weight:5,7 kg

CERTIFICATIONS / APPROVALS

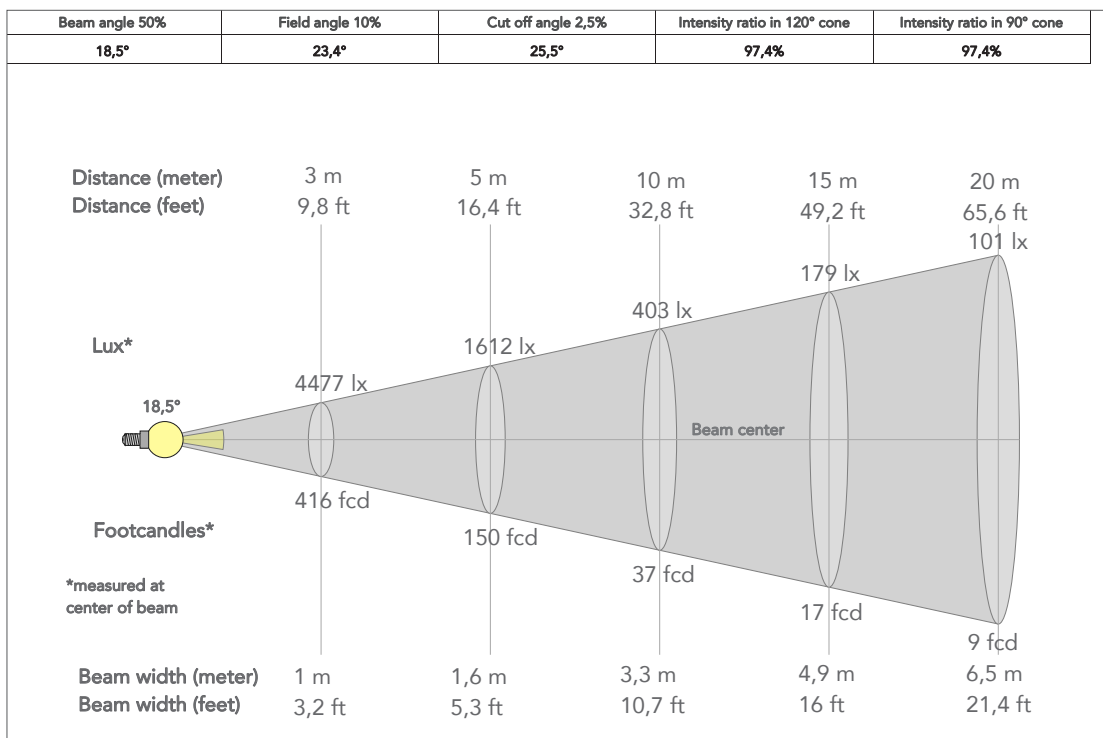
- Certifications / Approvals: CE, UKCA, RCM

ACCESSORIES & RELATED PRODUCTS

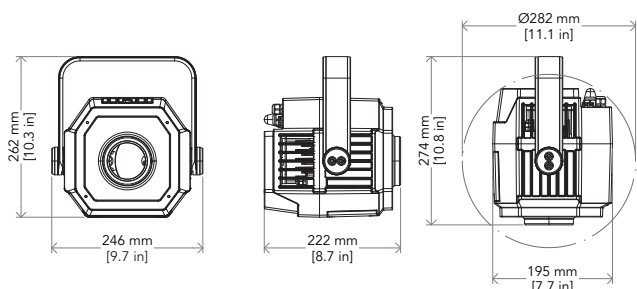
- **MOSUNIBRACKJR** Bracket for MOSAICOJR for wall mounting and suspension on poles
- **MF100LWGN** 15° lens for MOSAICOFX100 series, narrow for water effect and gobo
- **MF100LWGVV** 70° lens for MOSAICOFX100 series, very wide for water effect and gobo
- **MF100LWTM** 30° lens for MOSAICOFX100 series, medium for water effect
- **WSBBF1G5** BlackBox F-1 G5 transmitter, 2,45GHz & 5.2/5,8 GHz, DMX/RDM, 512Ch
- **MF100LWTW** 50° lens for MOSAICOFX100 series, wide for water effect
- **MF100LGBM** 30° lens for MOSAICOFX100 series, medium for gobo
- **MF100LGBW** 50° lens for MOSAICOFX100 series, wide for gobo
- **MF100WE1** Water effect wheel for MOSAICOFX100 series, short axis 1
- **MF100WE2** Water effect wheel for MOSAICOFX100 series, long axis 2
- **MF100GH** Gobo holder for MOSAICOFX100 serie (gobo not included) with manual indexing
- **MF100CH** Color holder for MOSAICOFX100 serie (color filters not included)
- **MF100SNOOT BK/GY** Snoot for MOSAICOFX100 series gray/black colour
- **AWEXAC12ADP** Power adapter from AWEXAC1 cable series to AWEXAC2 cable series
- **TIMOUFG** Wireless PCB upgrade kit from Tiny PCB to TimoFX PCB
- **AWEXDC1221ADP** Signal adapter kit from AWEXDC1 series to AWEXDC2 series and vice versa
- **AWEXAC1L03/05/10/20** IP67 power extension cable for outdoor architectural projectors, L.03/05/10/20 m
- **AWEXDC1L03/05/10/20** IP67 DMX extension cable for outdoor architectural projectors, L.03/05/10/20 m
- **UPBOX1UP5** Firmware uploader kit, USB IN, 5pin XLR DMX OUT, USB OUT
- **C6002B** Slim aluminum clamp, 200kg loading, 48-51mm tubes, M10 bolt, Black
- **RSR1235B** Steel security cable for hanging bodies, inox steel shackle, L=120 cm, black
- **WSBBF1G5** BlackBox F-1 G5 transmitter, 2,45GHz & 5.2/5,8 GHz, DMX/RDM, 512Ch
- **WSBBF1G6** BlackBox F-1 G6 transrec, 512ch, 2.45GHz, DMX&RDM,Bluetooth,G3,G4,G4S, G5, CRMX
- **WSBBR512G5** BlackBox R-512 G5 receiver 512Ch, 2.45GHz & 5.8GHz, DMX/RDM optional
- **WSBBR512G6** BlackBox R-512 G6 receiver 512Ch, 2.45GHz,DMX&RDM,Bluetooth,G3,G4,G4S,G5,CRMX

PRESET FULL ON

Beam angle 50%: 15° LWGN



TECHICAL DRAWINGS



CERTIFICATIONS / APPROVALS



Visit our website for specifications and tech documentations