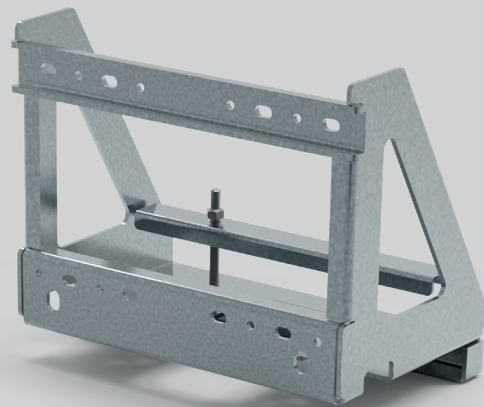




ADMIRAL
STAGING

TRUSS WALL MOUNT 30

Install your truss construction between walls without extra ceiling suspension using our Truss Wall Mount 30. Each Truss mount supports up to 400 kg, including the weight of the truss construction. Available in both black and silver versions.



KEY FEATURES

Ideal for smaller venues

A practical and convenient solution for rigging truss in compact spaces like classrooms, showrooms and studios.

Flexible installation

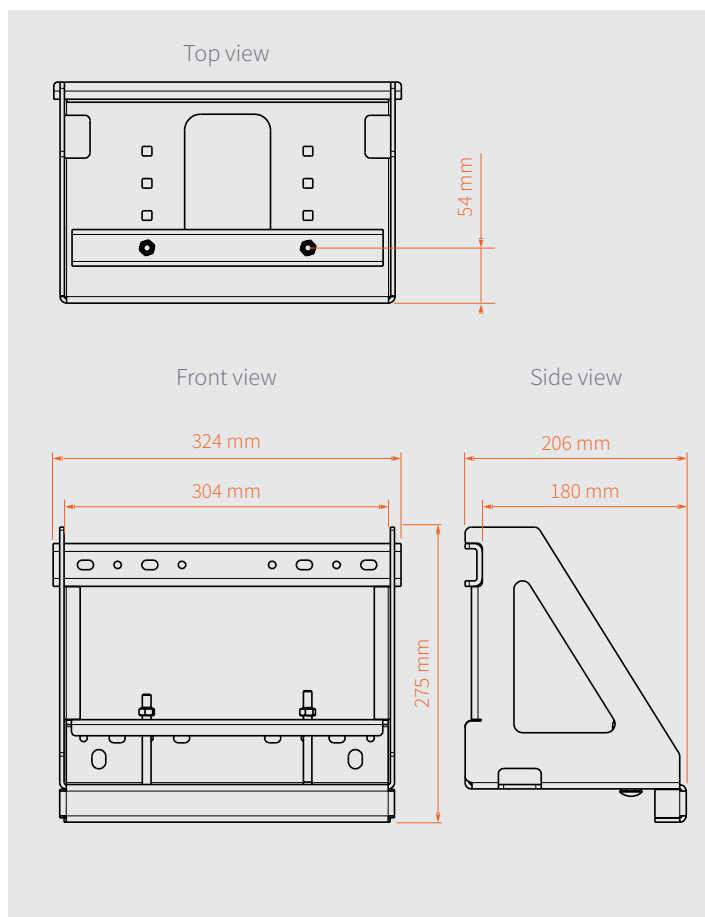
With multiple mounting holes and an adjustable fixation profile, it provides increased versatility during installation.

Sturdy design

It has a robust steel construction reinforced with plates on the sides.

www.admiralstaging.com

DIMENSIONS



TECHNICAL DATA

Truss wall mount 30 black

Article code:	RIHTWB30
EAN:	8720094422268
Max load:	400 kg
Material:	steel
Finish:	powder coated
Dimensions:	324 x 206 x 275 mm (L x W x H)
Weight:	11 kg
Colour:	black RAL 9005 30% gloss
Finish:	powder coated

Truss wall mount 30 zinc plated

Article code:	RIHTWC30
EAN:	8720094422275
Max load:	400 kg
Material:	steel
Finish:	zinc plated
Dimensions:	324 x 206 x 275 mm (L x W x H)
Weight:	11 kg
Colour:	silver
Finish:	zinc plated



ADMIRAL
STAGING

| www.admiralstaging.com | Josink Kolkweg 10 | 7545 PR Enschede | The Netherlands | Tel: +31 53 4 301 201 |