

Astra Blade100IP

IP65 motorized linear batten with 16x40W RGB+WW LEDs with two variable white pixel linear LED strips on both sides and zoom 4°-40°
ORDER CODE: **ASTRABLADE100IP**



The **Astra Blade100IP** is an IP65 rated, linear motorized LED batten, featuring high output through 16 x 40W RGB+WW LEDs and two variable white pixel linear LED strips on both sides, a wide zoom range, and control through the powerful PROLIGHTS Spektra OS algorithm that reproduces perfect white spectrums with high color rendering.

The new squared lens design maximizes lumen efficiency and provides a bright curtain of light at its narrowest angle of just 4°, while delivering smooth and homogeneous washes at its widest 40° wash when zoomed out.

Astra Blade100IP offers motorized tilt and individual pixel control across the 16 emitters and 32 sectors for your side strips, as well as both wired and wireless CRMX operations or through multi-protocol ethernet support.

The water and dustproof design ensures enhanced reliability for any indoor or outdoor stages, making it virtually maintenance-free.

MAIN FEATURES

- IP65 motorized 100cm Led batten with Tilt and zoom control
- 16x40W RGB+WW LEDs with two variable white linear LED strips on both sides, pixel control
- Zoom from 4° to 40°

TECHNICAL SPECIFICATION

LIGHT SOURCE

- Source: 16x40W RGBW Osram Ostar LEDs
- Luminous flux: (4,5°) 12'028 lm - (43,6°) 14'054 @Full
- Lux: (4,5°) 50'695 lx - (43,6°) 2'156lx @5 m full
- Other: 2 WW linear LED strips with 32 individual sections (16 sections on the top + 16 sections on the bottom)
- Source life expectancy: > 50.000 hrs (L70B10 @Ta 25° C / 77° F)

OPTICS

- Zoom range: 4,5° - 39° motorised linear zoom
- Lens diameter: square 50x50mm / 0"x1.97"
- Lens type: high-quality glass lens optics

COLOUR SYSTEM

- Colour control: CCT, RGBW, HSI, Colour Macros
- CCT: CCT control, + / - green correction, tungsten emulation
- Colour wheel: virtual colour wheel with macros
- Macros: several pre-built pixel macros with adjustable speed

DYNAMIC EFFECTS

- Control Resolution: 16-bit dimmer, colours
- Pixel patterns: pre-programmed dynamic and static patterns
- FX generator: adjustable foreground/background colour, index, speed, direction
- Static mode: selection of static dimmer, colors and color temperature
- Manual mode: manual adjustment of colour

BODY

- Hardware on-board: ancor points on the front for accessory mounting
- Tilt range: 200°
- Pan/Tilt resolution: bit 16-bit
- Feedback: automatic repositioning after accidental movement
- Body: weatherproof IP65 construction with die-cast magnesium alloy
- Body colour: black

CONTROL

- Protocols: DMX512, RDM, ArtNet, sACN, CRMX
- Pixel control: 16 px (main) + 32 px (strips) pixel2pixel control
- Wireless Control: included, LumenRadio Timo Fx DMX/RDM compatible

ACCESSORIES & RELATED PRODUCTS

- FCLASTRAB100IP Flight case for 2 pcs of ASTRABLADE100IP
- OS25PLUS Quick-lock omega bracket, M12 hole
- IPTESTBOX Portable vacuum and pressure tester for ProLights IP fixtures
- LRLUNA Single Universe DMX transceiver with Bluetooth

- with both CRMX (Lumen Radio) and W-DMX (Wireless DMX)
- RDM: RDM for remote monitoring and settings
- Display: LCD high resolution colour display with autoflip
- Firmware upgrade: via DMX with UPBOXPRO (USB-DMX interface not included)
- Master/Slave: for synchronised operation of more units linked in a chain
- EtherFlow: Ethernet pass-through switch that preserves network connectivity even when the fixture is unpowered.

ELECTRONICS

- Dimmer: linear 0 ~ 100% electronic dimmer
- Dimmer curves: 5 selectable dimming modes available
- Strobe / shutter: 1 - 30 Hz, electronic
- Display battery: self-charging battery backup
- Operating temperature: -20° C / +45° C (-4° F / +113° F) Ta
- LED Control: flicker free operation
- Selectable PWM: 1000 ~ 25.000 Hz

ELECTRICAL

- Mains power supply: 100-240V - 50/60Hz
- Max power consumption: 750W
- Output (at 230V): 4 units on a single power line
- Power factor: > 0,94

PHYSICAL

- IP rating: 65 (*)
- Cooling: combination of heat pipe cooling system and low noise fan
- Suspension and fixing: any position with quick-lock omega brackets
- Pan / tilt lock: for transportation and maintenance
- Signal connection: IP65 Seetronic XLR 5p IN/OUT connectors
- Data connection: IP65 Art-Net RJ45 IN/OUT
- Power connection: Seetronic powerCON TRUE IP65 IN/OUT
- Dimensions (WxHxD): 996x336x175mm / 39.21"x13.23"x6.89"
- Weight: 27,4kg / 60.41lbs
- (*) NOTE: Suitable for permanent outdoor use, provided installation and maintenance cycles by qualified technicians are carried.

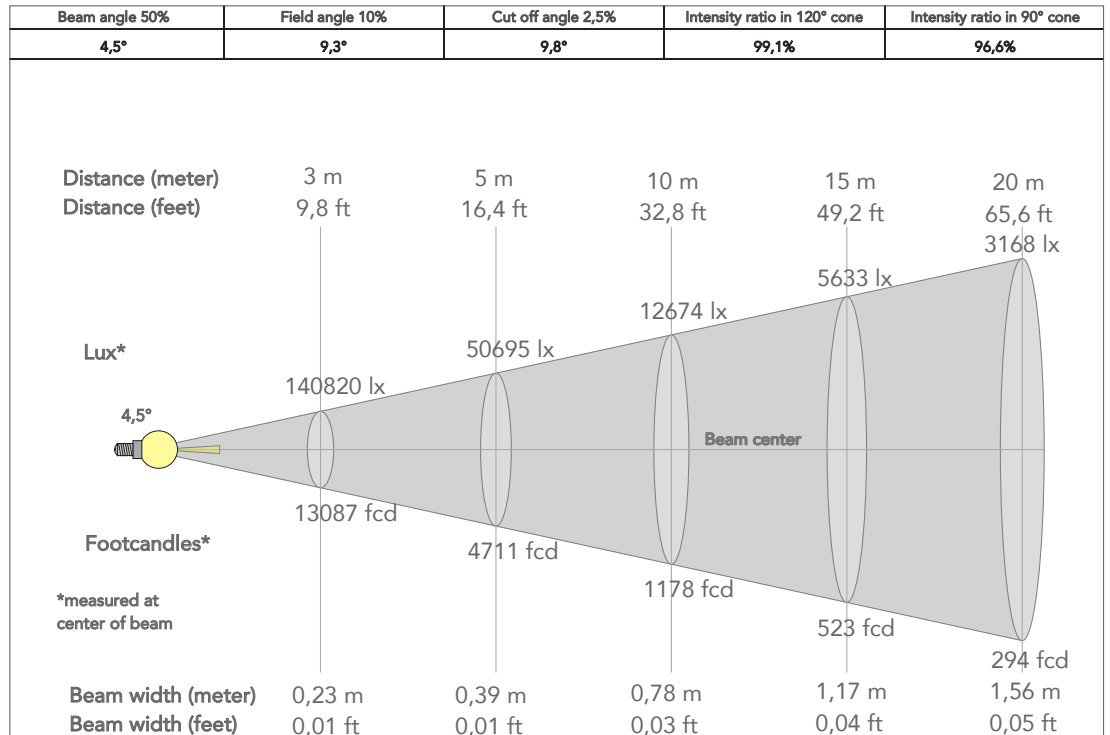
CERTIFICATIONS / APPROVALS

- Certifications / Approvals: CE, RCM

- C6002B Slim aluminum clamp, 200kg loading, 48-51mm tubes, M10 bolt, Black&White& White
- RSR0670B Steel security cable for hanging bodies, inox steel shackle, L=60 cm, black
- UPBOXPRO Firmware uploader kit, USB IN, 5-pin XLR DMX OUT connector

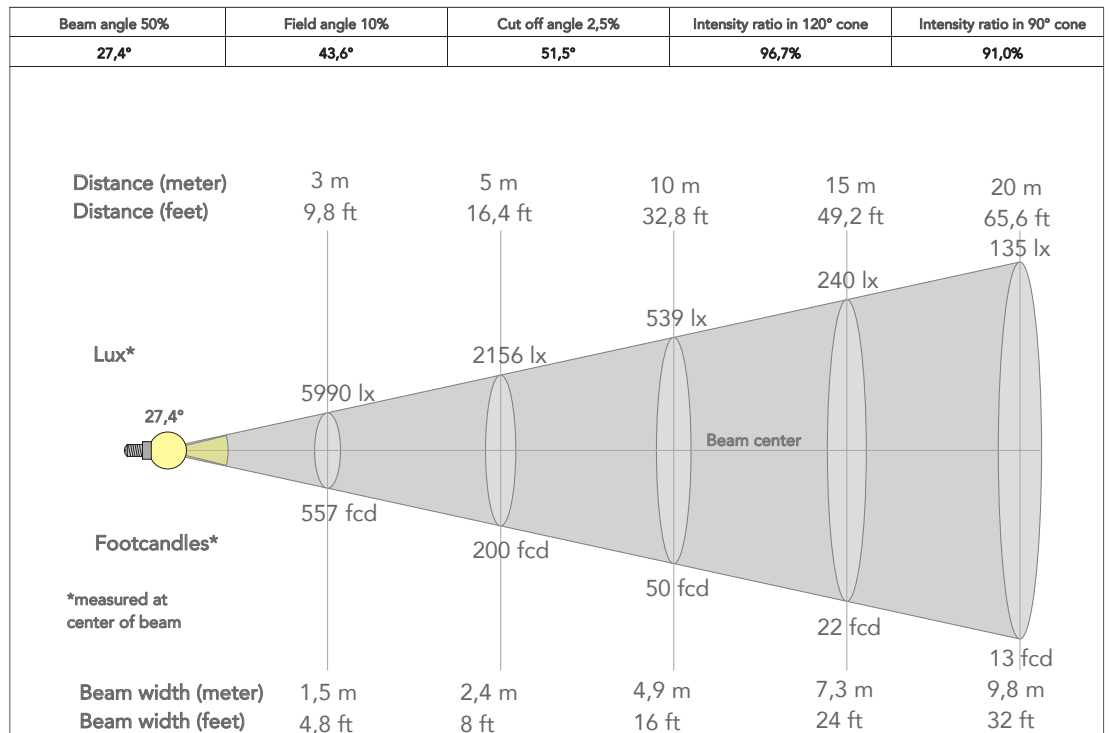
PRESET FULL ON

Beam angle 50%: 4,5°



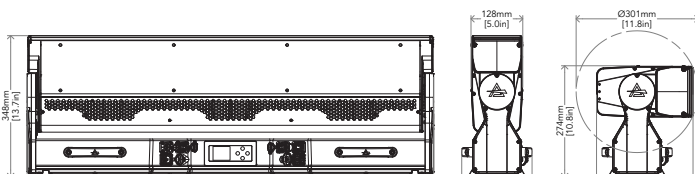
PRESET FULL ON

Beam angle 50%: 43,6°



TECHICAL DRAWINGS

CERTIFICATIONS / APPROVALS



Visit our website for specifications and tech documentations

