

# Astra Profile900HQ

900W high quality Profile Moving head, 6000K and CRI of 96, with 185mm optics and 5° - 52° zoom

ORDER CODE: **ASTRAPROFILE900HQ**



The **Astra Profile900HQ** is the flagship, high-quality profile moving head designed for large-scale theaters, TV & Film production. Powered by a 900W LED source with CRI 96, it delivers a bright and peerperfectly balanced 6000K White, making it an exceptional key light for any major production.

Its large 185mm front lens and versatile 5°-52° zoom range ensure outstanding performance at virtually any distance. The new MotiOs motion ecosystem enhances speed, precision, and responsiveness across pan, tilt, internal wheels, and framing modules, setting a new standard in motion control.

For precise color control, the **Astra Profile900** features linear CMY+CTO mixing and a color wheel, delivering high output saturated colors and balanced whites. Additional highlights include dual rotating gobo wheels, an animation wheel, a four-layer framing system, dual prisms, dual frost filters, and iris—making it adaptable to a wide variety of production needs.

## TECHNICAL SPECIFICATION

### LIGHT SOURCE

- Source: 900W White LED
- CCT: 6.000K
- Luminous flux: (5,4°) 13'969 lm - (med) 25'941 lm - (52°) 25'311 lm
- Lux: (5,4°) 74'135 lx - (med) 9'836 lx - (52°) 1'659lx @5 m
- CRI: 96
- R9: 90
- TLCI: 97
- TM30 Rf: >91
- TM30 Rg: <99
- Source life expectancy:

### OPTICS

- Zoom range: 5,4° - 52° motorised linear zoom
- Lens diameter: 185mm / 7.28"
- Lens type: HD anti-reflection lenses with achromatic coating
- Focus: motorised 16-bit control with focus tracking

### COLOUR SYSTEM

- Colour mixing: linear CMY
- CCT: linear CTO correction 2.700 K ~ 6.000 K
- Colour wheel: open + 6 colour filters

### DYNAMIC EFFECTS

- Control Resolution: 16-bit dimmer
- Shutter system: 4 shutter blades with position and ±30° angle adjustment, ±45° rotation of the complete framing system
- Animation wheel: animation wheel with CW and CCW rotation
- Rotating gobos: 7 rotating gobos + open, interchangeable, indexing
- Gobo size: outer: 30 mm - image: 25 mm - thickness: up to 3 mm
- Rotating gobos: 7 rotating gobos + open, interchangeable, indexing
- Gobo size: outer: 30 mm - image: 25 mm - thickness: up to 3 mm
- FX generator: 2 prisms overlap for spectacular aerial effects
- Circular prism: 4f with bi-directional rotation, indexing
- Linear prism: 6f with bi-directional rotation, indexing
- Frost: dual frost filter, soft-edge and heavy (one interchangeable)
- Iris: 5 - 100% motorised iris

### BODY

- Hardware on-board: sockets for quick-Lock Omega bracket (clamp not included)
- Pan range: 540°
- Tilt range: 270°
- Pan/Tilt resolution: bit 16-bit

## ACCESSORIES & RELATED PRODUCTS

- FCLASTRAP900 Flight case for 1 pc of ASTRAPROFILE900
- OS30PLUS Quick-lock omega bracket, M12 hole
- C6001B Slim aluminum clamp, 200kg loading, 48-51mm tubes, M10 bolt, Black
- 9533FXWL03 Ass. 3x2.5mm TH07 cable, SHUKO plug, MENAC3FXW socket, L.3m
- 9513FXWL03 Ass. 3x2.5mm TH07 cable, 16A 3p 230V CEE plug, MENAC3FXW socket, L.3 m

## MAIN FEATURES

- 900W 6000K White LED source with CRI 96Ra
- 185mm front lens with a 5°-52° zoom
- MotiOs enhances motion speed, precision, and responsiveness across motorized features
- CMY+CTO Color mixing, one color wheel, 4 framing shutters, 2 rotating gobo wheels, 1 animation wheel, 2 frost, 2 prisms, iris

- Feedback: automatic repositioning after accidental movement
- Body: aluminium structure with high-resistance polycarbonate cover
- Body colour: black

### CONTROL

- Protocols: DMX512, RDM, ArtNet, sACN, CRMX
- DMX channels: 46channel
- Wireless Control: included, LumenRadio Timo Fx DMX/RDM compatible with both CRMX (Lumen Radio) and W-DMX (Wireless DMX)
- RDM: RDM for remote monitoring and settings
- Display: Graphic User Interface
- Firmware upgrade: via DMX with UPBOXPRO/UPBOX2 (USB-DMX interface not included) or via USB pen drive
- EtherFlow: Ethernet pass-through switch that preserves network connectivity even when the fixture is unpowered.

### ELECTRONICS

- Dimmer: linear 0 ~ 100% electronic dimmer
- Dimmer curves: 4 selectable dimming modes available
- Strobe / shutter: 1 - 30 Hz, electronic
- Display battery: self-charging battery backup
- Operating temperature: -10° ~ +45° Ta
- LED Control: flicker free frequency with adjustable PWM
- Selectable PWM: 600 ~ 50.000 Hz

### ELECTRICAL

- Mains power supply: 100-240V - 50/60Hz
- Max power consumption: 1310W
- Standby power: 150 W
- Output (at 230V): 2 units on a single power line
- Power factor: > 0,97

### PHYSICAL

- IP rating: 20
- Cooling: combination of heat pipe cooling system and low noise fan
- Suspension and fixing: any position with quick-lock omega brackets
- Pan / tilt lock: for transportation and maintenance
- Signal connection: Neutrik XLR 5p IN/OUT connectors
- Data connection: Neutrik Art-Net RJ45 IN/OUT
- Power connection: Neutrik powerCON TRUE1 IN/OUT connectors
- Dimensions (WxHxD): 516x856x310mm / 20.31"x33.7"x12.2"
- Weight: 45,2kg / 99.65lbs

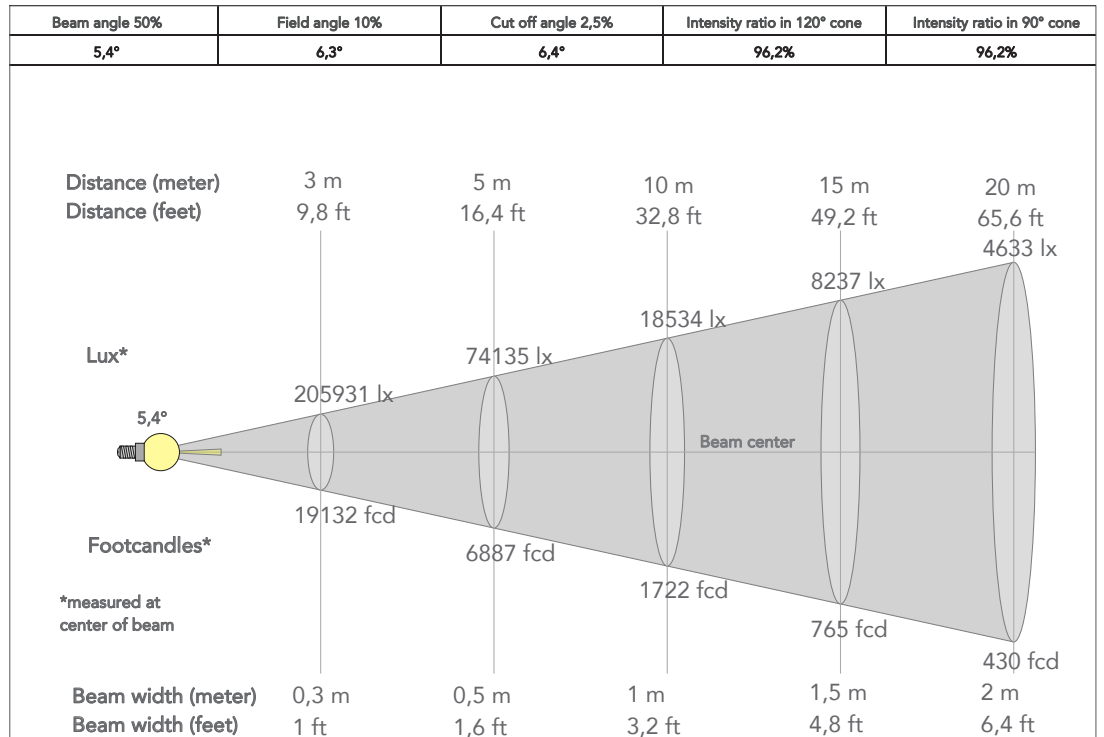
### CERTIFICATIONS / APPROVALS

- Certifications / Approvals: CE, RCM

- 958225L03 3x2.5mm TH07 Cable, 16A 3p PwCon MXW, 16A 3p PwCon FXW, L. 3m
- TOUR53415L03 Dmx cable HC5340. CANCEMXX XLR 5p->CANCE5FX XLR (f) 5p, L.3m
- LRLUNA Single Universe DMX transceiver with Bluetooth
- UPBOXPRO Firmware uploader kit, USB IN, 5-pin XLR DMX OUT connector

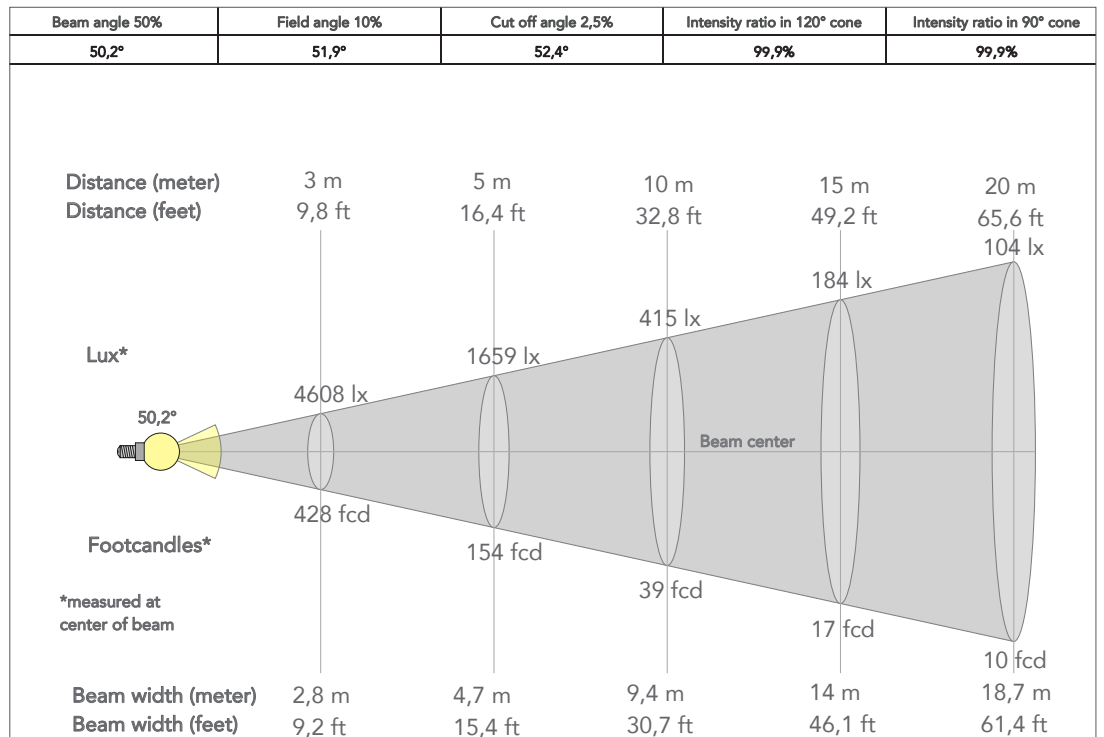
**PRESET FULL ON**

Beam angle 50%: 5,4°

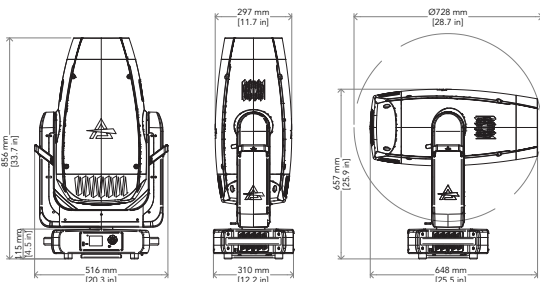


**PRESET FULL ON**

Beam angle 50%: 50,2°



**TECHICAL DRAWINGS**



Visit our website for specifications and tech documentations

