

## CCT SERIES

2835 160LEDs/m 14.40W/m



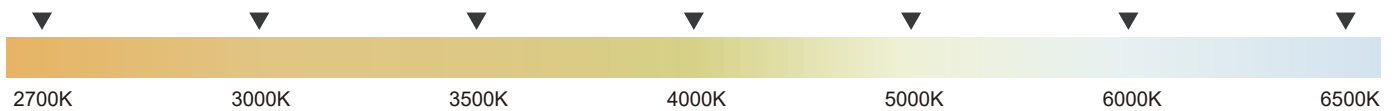
RS-CA2835-24V-160D-10-20



## Product Features

1. Dual color adjustable, tunable white 2700K-6500K.
2. Source by high cost-performance 2835 Led with uniform illumination.
3. Pass new ERP (EU) 2019/2020 regulation, Eco design compliant.
4. CRI90+ is standard; CRI90+, CRI95+ are optional.
5. Warranty: 3 years.

## CCT Option

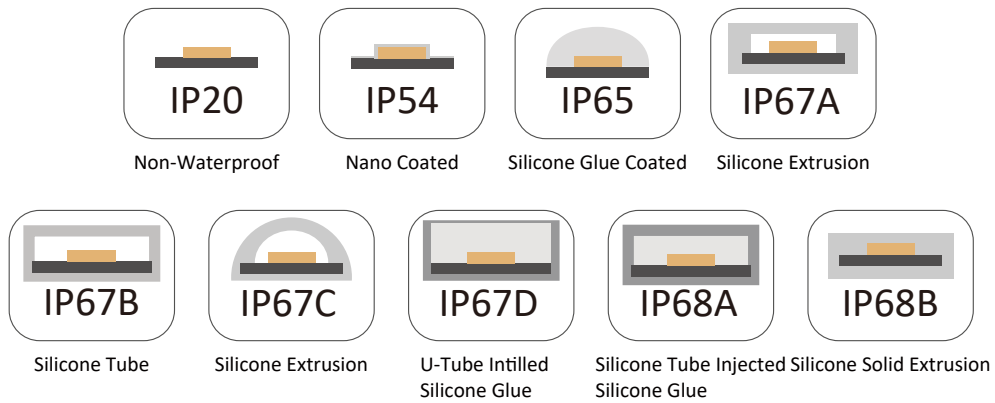


Lighting Effect

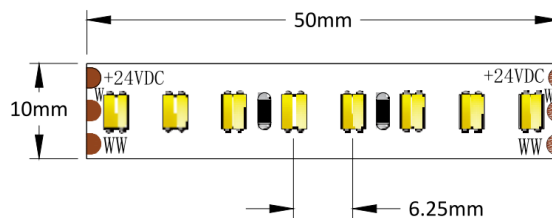


Lighting Effect

## IP Rating Option



## Dimension(mm/inch)



Length/Reel	Width	Height	LED Spacing	Min. Cutting
5000mm/197in	10mm/0.394in	1.5mm/0.059in	6.25mm/0.246in	Every 50mm/1.97in (8LEDs)

### Note:

LED strip length tolerance is + -0.2%mm.

Width tolerance is + -0.2%mm.

## Data

Part Number	Working Voltage	Power	Current	LED Qty	CRI
RS-CA2835-24V-160D-10-20	24V	14.40W/m	0.621A/m	160LED/m	90+
		4.39W/ft	0.189A/ft	≈48LEDs/ft	

CCT (°K)	Luminous Efficiency	lumen	Maximum Length
2700K(7.2W)	105lm/W	756lm/m(230lm/ft)	5M(1.524ft)
4000K(14.40W)	115lm/W	1656lm/m(505lm/ft)	5M(1.524ft)
6500K(7.2W)	119lm/W	856lm/m(261lm/ft)	5M(1.524ft)
1800K-2500K	/	/	/

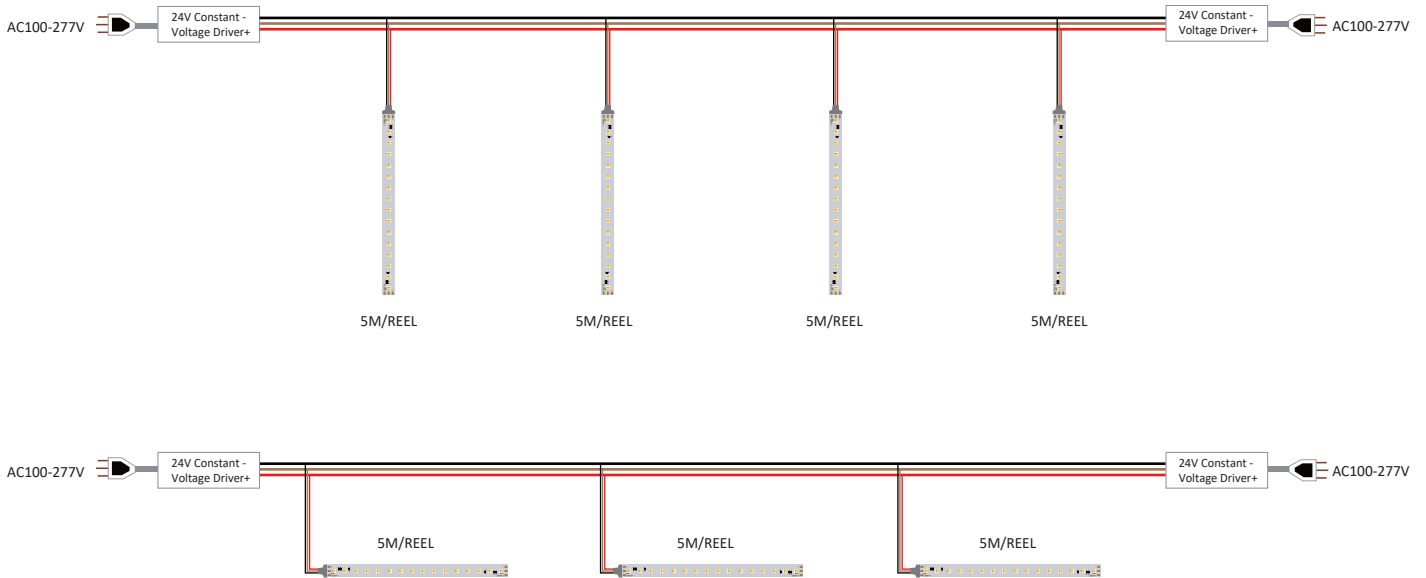
## Note:

The data base on IP20 non-waterproof.  
 The Lumen output value tolerance + -5% due to testing way.  
 The CCT will be + -150K tolerance.

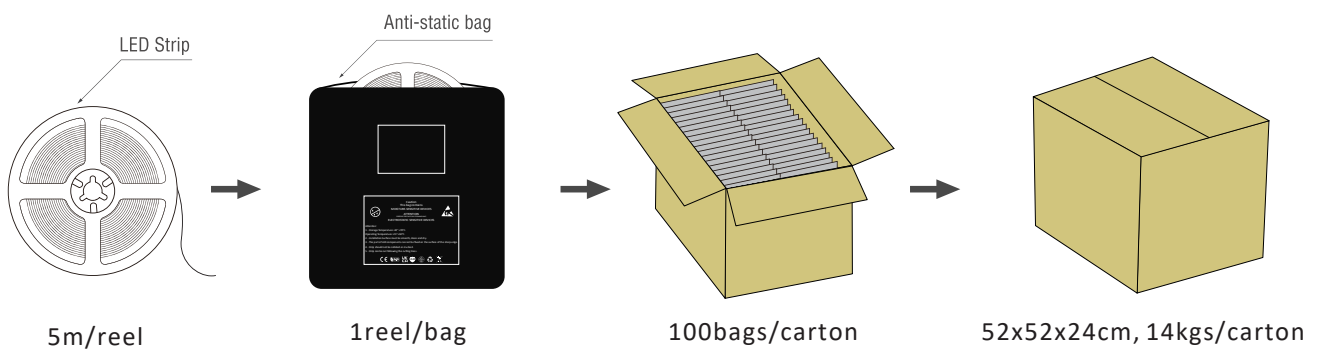
## Absolute Maximum Ratings

Parameter	Symbol	Value
Thermal Measurement Point	Tc	80°C/176°F
Operating Temperature	Topr	<80°C/<176°F
Storage Temperature	Ts	-20~+ 60°C/-68~140°F
Number of FPC Connection		

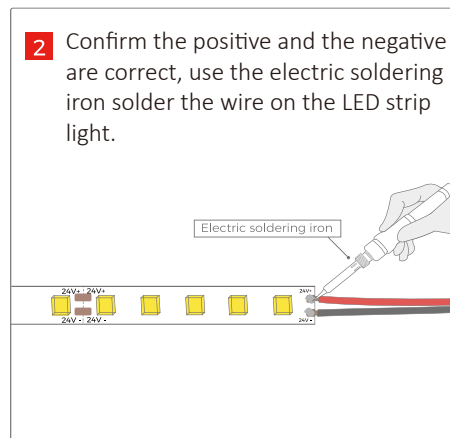
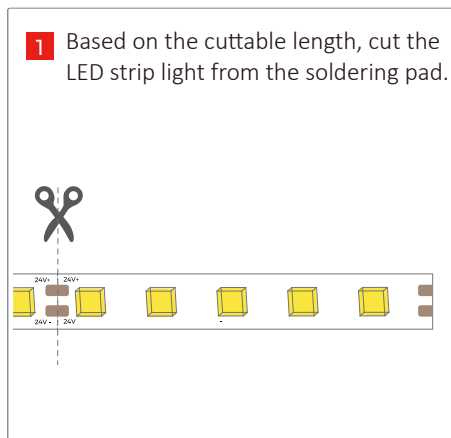
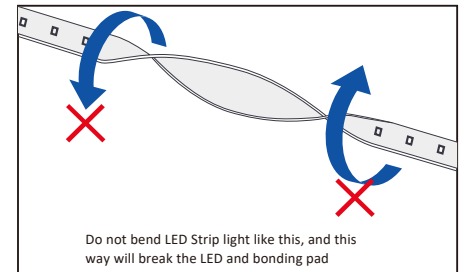
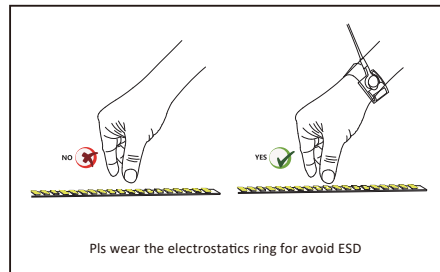
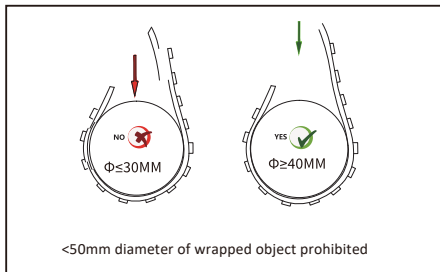
## Wiring Diagram Application



## Packaging



## Cautions



## Safety & Disclosures

1. Do not install the led strip in environment where excessive heat may occur.
2. Only use copper wiring. Use wires rated for at least 176°F(80°C) and certified for use with
3. Do not install IP20 LED strip products in outdoor / wet location environments.
4. Excessive handling, bending, and pressure may damage the product, voiding the warranty.
5. Improper wire selection and installation could overheat wires, and cause fire.
6. Do not connect directly to high voltage or AC power.
7. Installation must be in accordance with local and national electrical code regulations.
8. To ensure safety and correct installation, our strips are intended to be installed by a qualified, licensed electrician.