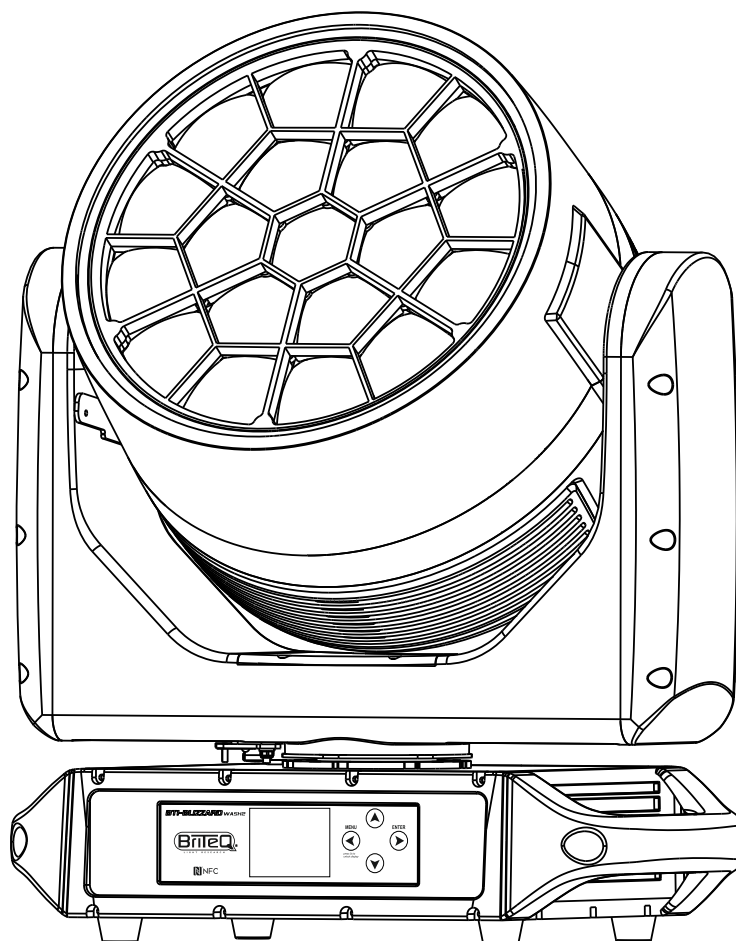


BTI-BLIZZARD

WASH2



ENGLISH

Operation Manual

Other languages can be downloaded from:
WWW.BRITEQ-LIGHTING.COM



Version: 1.0





EN - DISPOSAL OF THE DEVICE

Dispose of the unit and used batteries in an environment friendly manner according to your country regulations.

FR - DÉCLASSER L'APPAREIL

Débarrassez-vous de l'appareil et des piles usagées de manière écologique conformément aux dispositions légales de votre pays.

NL - VERWIJDEREN VAN HET APPARAAT

Verwijder het toestel en de gebruikte batterijen op een milieuvriendelijke manier conform de in uw land geldende voorschriften.

DU - ENTSORGUNG DES GERÄTS

Entsorgen Sie das Gerät und die Batterien auf umweltfreundliche Art und Weise gemäß den Vorschriften Ihres Landes.

ES - DESHACERSE DEL APARATO

Reciclar el aparato y pilas usadas de forma ecologica conforme a las disposiciones legales de su país.

PT - COMO DESFAZER-SE DA UNIDADE

Tente reciclar a unidade e as pilhas usadas respeitando o ambiente e em conformidade com as normas vigentes no seu país.

OPERATION MANUAL

Thank you for buying this Briteq® product. To take full advantage of all possibilities and for your own safety, please read these operating instructions very carefully before you start using this unit.

FEATURES

- BTI-BLIZZARD WASH2 is a very powerful outdoor moving wash
- **IP65 protection and low noise operation:** perfect for both **outdoor and indoor use!**
- Based on 19x 50W **RGBL** light sources.
- Using LIME instead of WHITE provides a **wider color palette and perfect white** with high CRI.
- Different “Hi-CRI” CCT presets from 1800K to 10000K
- Very high & constant light output: 52.000 lux @5m (3.8°) - 950 lux @5m (38°)
- Very smooth **24bit dimmer** with fast and slow dimming mode.
- Four dimmer curves: linear, square, inverse square, S-curve
- RGB halo-ring with nice build-in “eye-candy” effect macros.
- RGB mask with 12 segment pixel control and build-in effect macros.
- Fast 16bit pan/tilt movements with position correction and pan/tilt speed channel.
- Super silent fan mode for theater applications.
- Different modes, ranging from 26 to 133 DMX channels + RDM-functionality for easy remote setup.
- Full support for Art-Net™ and sACN!
- Pixels externally controllable with Art-Net™ or sACN while controlling the fixture with DMX.
- **Built-in wireless DMX-receiver** (W-DMX / CRMX compatible)
- The matrix LCD-display assures easy navigation in the different setup menus.
- **NFC-function:** read error codes and other information, perfect for dry-hire companies!
(Dedicated APP still under development)
- 5pin DMX in/outputs + RJ45 in/out + PowerCON TRUE1 compatible
- DMX in/outputs can be very easily converted to 3pin XLR with BT-XLR5TO3 kit.
- Optional backup battery: settings can be made without connecting the unit to mains.
- Equipped with omega brackets for fast installation.

BEFORE USE

- Before you start using this unit, please check if there is no transportation damage. Should there be any, do not use the device and consult your dealer first.
- **Important:** This device left our factory in perfect condition and well packaged. It is necessary for the user to strictly follow the safety instructions and warnings in this user manual. Any damage caused by mishandling is not subject to warranty. The dealer will not accept responsibility for any resulting defects or problems caused by disregarding this user manual.
- Keep this booklet in a safe place for future consultation. If you sell the fixture, be sure to add this user manual.

Check the contents:

Check that the carton contains the following items:

- BTI-BLIZZARD WASH2
- Mains cable, PowerCON® TRUE-1 compatible
- 2 BriteQ omega brackets BIG
- Safety cable
- Operating instructions

SAFETY INSTRUCTIONS



CAUTION
RISK OF ELECTRIC SHOCK
DO NOT OPEN



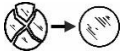
CAUTION: To reduce the risk of electric shock, do not remove the top cover. No user-serviceable parts inside. Refer servicing to qualified service personnel only.



The lightning flash with arrowhead symbol within the equilateral triangle is intended to alert the user or the presence of un-insulated "dangerous voltage" within the product's enclosure that may be of sufficient magnitude to constitute a risk of electric shock.



The exclamation point within the equilateral triangle is intended to alert the user to the presence of important operation and maintenance (servicing) instructions in the literature accompanying this appliance.



This symbol means: repair any broken lenses!



This symbol means: Do not stare at the operating light source



This symbol means: Read instructions



This symbol determines: the minimum distance from lighted objects. The minimum distance between light-output and the illuminated surface must be more than 0.2 meters

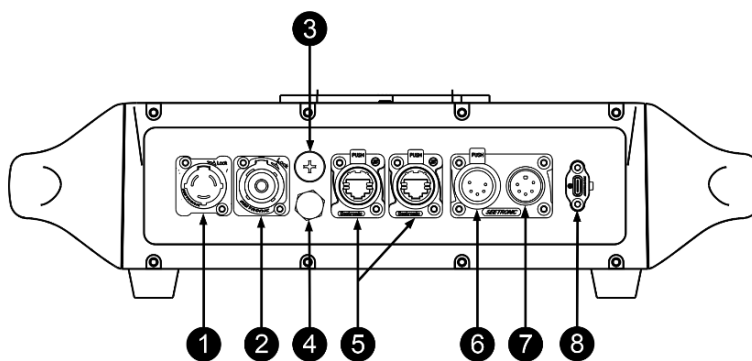
- To protect the environment, please try to recycle the packing material as much as possible.
- A new light effect sometimes causes some unwanted smoke and/or smell. This is normal and disappears after some minutes.
- To avoid condensation to be formed inside, allow the unit to adapt to the surrounding temperatures when bringing it into a warm room after transport. Condensation sometimes prevents the unit from working at full performance or may even cause damages.
- Don't place metal objects or spill liquid inside the unit. Electric shock or malfunction may result. If a foreign object enters the unit, immediately disconnect the mains power.
- Locate the fixture in a well-ventilated spot, away from any flammable materials and/or liquids. The fixture must be fixed at least 20cm from surrounding walls.
- Don't cover any ventilation openings as this may result in overheating.
- Prevent use in dusty environments and clean the unit regularly.
- Keep the unit away from children.
- Inexperienced persons should not operate this device.
- Maximum safe ambient temperature is 40°C. Don't use this unit at higher ambient temperatures.
- The units' surface temperature may reach up to 85°C. Don't touch the housing with bare hands during its operation.
- Make sure the area below the installation place is free from unwanted persons during rigging, de-rigging and servicing.
- Allow the device about 10 minutes to cool down before replacing the bulb or start servicing.
- Always unplug the unit when it is not used for a longer time or before replacing the bulb or start servicing.
- The electrical installation should be carried out by qualified personal only, according to the regulations for electrical and mechanical safety in your country.
- Check that the available voltage is not higher than the one stated on the rear panel of the unit.
- The power cord should always be in perfect condition. Switch the unit immediately off when the power cord is squashed or damaged. It must be replaced by the manufacturer, its service agent or similarly qualified persons in order to avoid a hazard.
- Never let the power-cord come into contact with other cables!
- This fixture must be earthed to comply with safety regulations.
- Don't connect the unit to any dimmer pack.
- Always use an appropriate and certified safety cable when installing the unit.
- To prevent electric shock, do not open the cover. Apart from the lamp and mains fuse there are no user serviceable parts inside.
- Never repair a fuse or bypass the fuse holder. Always replace a damaged fuse with a fuse of the same type and electrical specifications!
- In the event of serious operating problems, stop using the fixture and contact your dealer immediately.
- The housing and the lenses must be replaced if they are visibly damaged.
- Please use the original packing when the device is to be transported.
- Due to safety reasons it is prohibited to make unauthorized modifications to the unit.

Important: Never look directly into the light source! Don't use the effect in the presence of persons suffering from epilepsy.

DESCRIPTION:

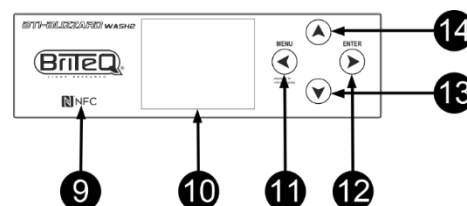
REAR PANEL:

1. Seetronic IP65 power input
2. Seetronic IP65 power output
3. Fuse slot (20x5mm, T16A / 250V)
4. Air pressure vent
5. Network in/output for ArtNet & sACN
6. DMX output, XLR 5-pin
7. DMX input, XLR 5-pin
PS: 6+7 can be changed to XLR-3pin (optional BT-XLR5TO3 COMBIKIT needed)
8. USB-C Connector for firmware upgrades



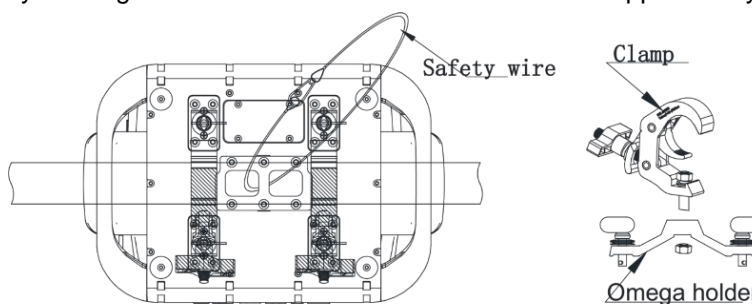
FRONT PANEL:

9. Location NFC antenna: Used for easy diagnostics readout of the fixture (APP under development)
10. LCD screen: setup menus can be locked
11. ◀-Button: Used to open the menu and go one level up.
Press this ◀-Button during 5 seconds to wake up the display when it is in sleep mode (dark)!
12. ▶-Button: used to confirm a menu item (ENTER-button)
13. ▲-Button: Used to go up in the menu or increase the selected value.
14. ▼-Button: Used to go down in the menu or decrease the selected value.



OVERHEAD RIGGING

- **Important:** The installation must be carried out by qualified service personal only. Improper installation can result in serious injuries and/or damage to property. Overhead rigging requires extensive experience! Working load limits should be respected, certified installation materials should be used, the installed device should be inspected regularly for safety.
- Make sure the area below the installation place is free from unwanted persons during rigging, de-rigging and servicing.
- Locate the fixture in a well-ventilated spot, far away from any flammable materials and/or liquids. The fixture must be fixed **at least 50cm** from surrounding walls.
- The device should be installed out of reach of people and outside areas where persons may walk by or be seated.
- Before rigging make sure that the installation area can hold a minimum point load of 10times the device's weight.
- Always use a certified safety cable that can hold 12 times the weight of the device when installing the unit. This secondary safety attachment should be installed in a way that no part of the installation can drop more than 20cm if the main attachment fails.
- The device should be well fixed; a free-swinging mounting is dangerous and may not be considered!
- Don't cover any ventilation openings as this may result in overheating.
- The operator must make sure that the safety-relating and machine-technical installations are approved by an expert before using them for the first time. The installations should be inspected every year by a skilled person to be sure that safety is still optimal.
- Fix the Truss hooks to the optional omega brackets with screw and locking nut.
- Fasten the omega brackets on the bottom of the base by inserting quick-lock fasteners into the holes of the base and tighten fully clockwise. (you should hear or feel a 'click')



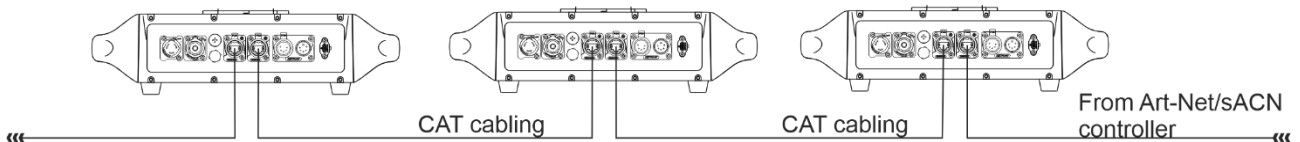
ELECTRICAL INSTALLATION

⚠ Important: The electrical installation should be carried out by qualified personal only, according to the regulations for electrical and mechanical safety in your country.

Electrical installation for two or more units in ArtNet/sACN-mode:

Art-Net is nothing more than a protocol for transmitting DMX512 over an Ethernet network, developed by Artistic Licence Engineering (UK) Ltd. Thanks to the much bigger bandwidth it is possible to send more than 256 DMX-universes in one time.

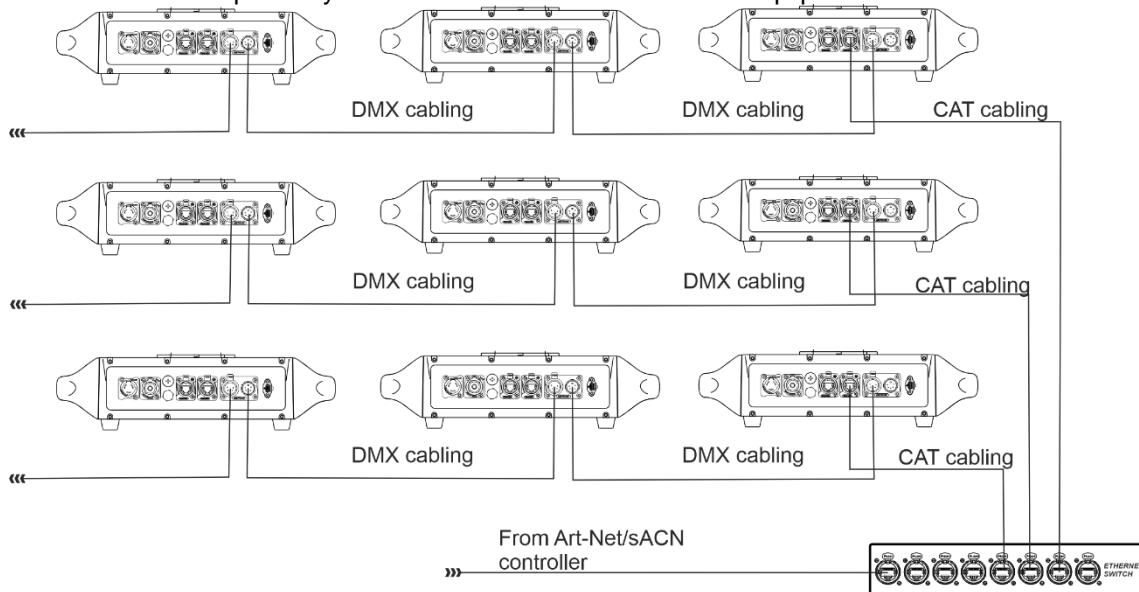
This projector can be connected in such Ethernet network using routers, switches etc. The network topology is the same as for a normal PC-network. However, IP-addresses cannot be obtained via DHCP: see the explanations in the chapter "setup menu" on how to manually setup the IP-address, Net Mask and choose the desired DMX-universe. Also the sACN protocol is supported.



IMPORTANT NOTE: this projector has both Ethernet input and output so you can daisy chain several units. However, the number of units in one chain should be limited to ±10 units to avoid unwanted signal delays. In bigger installations you should use the "STAR-topology" using Ethernet switches (or a combination of both).

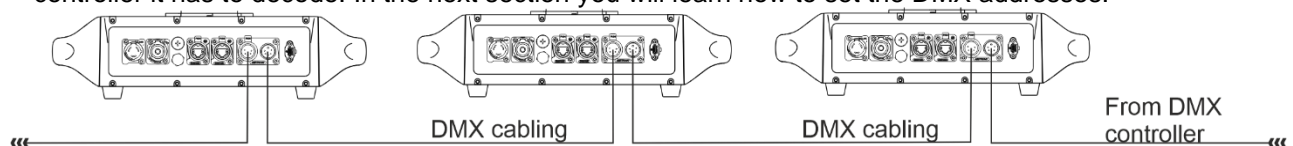
Electrical installation for two or more units in ArtNet to DMX-mode:

- Internally the selected DMX-universe is treated as a normal DMX-signal so further setup of the DMX-address, channel mode etc. should be done as usual.
- Thanks to the internal Art-Net node all 512 channels of the selected DMX-universe can be converted from Art-Net to the DMX-output: they can be used to control other DMX-equipment:



Electrical installation for two or more units in DMX-mode:

- The DMX-protocol is a widely used high speed signal to control intelligent light equipment. You need to "daisy chain" your DMX controller and all the connected units with a good quality balanced cable.
- Each unit in the chain needs to have its proper starting address so it knows which commands from the controller it has to decode. In the next section you will learn how to set the DMX addresses.



OPERATING INSTRUCTIONS

- In the event of serious operating problems, stop using the fixture and contact your dealer immediately.

SETTING MENU

Press the ►-button on the display to open the setup menu. Use the ▲/▼, ◀ and ▶ buttons to navigate:

Default password: Up-Down-Up-Down-Right (Enter)			
Level 0	Level 1	Level 2	Level 3
Level 4	Default		
Address	001-512		
Person	HSIC		<i>Tour</i>
	SSP		
	TOUR		
	TR16		
	CMY		
	PIXEL		
Pixel address	001-512		<i>001</i>
Pixel Person	Disabled		<i>Disabled</i>
	PXL RGBL		
Runmode	DMX512		<i>DMX512</i>
	Artnet		
	Artnet To DMX		
	sACN		
	DMX + Artnet		
	DMX + sACN		
	AUTO		
	Custom1		
Option	Pan invert	Normal	<i>Normal</i>
		Invert	
	Tilt invert	Normal	<i>Normal</i>
		Invert	
	Perform	Studio	<i>Live</i>
		Power	
		Live	
	Blackout	Off	<i>Off</i>
		On	
	PT Encoder	Off	<i>On</i>
		On	
	Dimmer	Dim4	<i>Dim4</i>
		OFF	
	LED PWM	1200Hz	<i>1200Hz</i>
		2400Hz	
		4000Hz	
		6000Hz	
		25000Hz	
	DMX error	Freeze	<i>Freeze</i>
		Blackout	
Display Time	On	<i>1min</i>	
	30s		
	1min		
	2min		
Menu Lock	Off	<i>On</i>	
	On		
Load Para	Off	<i>On</i>	
	On		
WDMX pair	Unpair		
	Pair		

Level 0	Level 1	Level 2	Level 3	Level 4	Default	
	Signal	only XLRDMX				
		XLRDMX First				
		only WDMX				
		WDMX First				
		WDMX to XLR DMX				
	Color Cali	Off				
		User Calibration	Red			
			Green			
			Blue			
			Lime			
	6500K Calibration					
	Factory calibration					
	Network	Net switch	2.xxx.xxx.xxx			
			10.xxx.xxx.xxx			
		Universe	0-255		2.xxx.xxx.xxx	
IP mode		Default IP				
	Custom IP		xxx.xxx.xxx.xxx			
Edit	Edit1-2	Step1-30	Pan			
			Tilt			
			Zoom			
			Red			
			Green			
			Blue			
			Lime			
			Strobe			
			Preset Color			
			CCT			
			Static pixel			
			Pixel effect			
			RedRing			
			GreenRing			
			BlueRing			
			Time			
			Use	Yes/no		
			Clean Edit1			
	Clean edit2					
	Manual	Auto test				
Channel		...				
CCT		CCT presets 1800K - 10000K				
Preset Color		Preset Color 1-24				
CMY		CMY presets				
Debug Hide		Yes				
		No				
Reset		All reset				
	PT Reset					
	Other					
Service	Pan					
	Tilt					
	Zoom					
Info	Fixture Hours					
	LED use hours					
	Temperature					
	Version					
	RDM	UID				
		Label				
System error						
Update software						
Factory reset						

Address**Used to set the DMX-starting address.**

- Press the ►-button to open the menu. (Enter the password if prompted)
- Press the ▲/▼ buttons to select the **ADDRESS** option and hit the ►-button to select.
- Use the ▲/▼ buttons to select the correct DMX address
- Press the ►-button to confirm.

Person**Used to set the channel mode of the unit**

- Press the ►-button to open the menu. (Enter the password if prompted)
- Press the ▲/▼ buttons to select the **PERSON** option and hit the ►-button to select.
- Use the ▲/▼ buttons to select the correct DMX address
 - **HSIC:** 28 Channels
 - **SSP:** 26 Channels
 - **TOUR:** 31 Channels
 - **TR16 :** 38 Channels
 - **CMY :** 32 Channels
 - **PIXEL :** 133 Channels
- Press the ►-button to confirm.

Pixel Address**Used to set the DMX-starting address of the pixel fixture.**

- Press the ►-button to open the menu. (Enter the password if prompted)
- Press the ▲/▼ buttons to select the **PIXEL ADDRESS** option and hit the ►-button to select.
- Use the ▲/▼ buttons to select the correct DMX address
- Press the ►-button to confirm.

Pixel Person**Used to set the channel mode of the pixel fixture**

- Press the ►-button to open the menu. (Enter the password if prompted)
- Press the ▲/▼ buttons to select the **PIXEL PERSON** option and hit the ►-button to select.
- Use the ▲/▼ buttons to select the correct DMX address
 - **DISABLED:** 0 Channels
 - **PXL RGLB:** 112 Channels
- Press the ►-button to confirm.

Runmode**Used to set the channel mode of the unit**

- Press the ►-button to open the menu. (Enter the password if prompted)
- Press the ▲/▼ buttons to select the **RUNMODE** option and hit the ►-button to select.
- Use the ▲/▼ buttons to select the correct DMX address
 - **DMX512 :** Fixture reacts to DMX
 - **ArtNet:** Fixture reacts to ArtNet
 - **ArtNet TO DMX:** Fixture acts as a ArtNet node and will transform ArtNet to DMX on its output
 - **sACN:** Fixture reacts to sACN
 - **DMX + ARTNET:** Fixture reacts to DMX and Pixel fixture reacts to Art-Net™
 - **DMX + sACN:** Fixture reacts to DMX and Pixel fixture reacts to sACN
 - **AUTO :** Fixture steps automatically through pre-programmed steps
 - **Custom1/Custom2 :** Fixture steps automatically through user-programmed steps
- Press the ►-button to confirm.

Option**Menu with functions related to the overall settings of the fixture****PAN INVERT****Used to invert the pan movement**

- Press the ►-button to open the menu. (Enter the password if prompted)
- Press the ▲/▼ buttons to select **OPTION** and hit the ►-button to select.
- Press the ▲/▼ buttons to select the **PAN INVERT** option and hit the ►-button to select.
- Use the ▲/▼ buttons to select **OFF/ON**
- Press the ►-button to confirm.

TILT INVERT

Used to invert the tilt movement

- Press the ►-button to open the menu. (Enter the password if prompted)
- Press the ▲/▼ buttons to select **OPTION** and hit the ►-button to select
- Press the ▲/▼ buttons to select the **TILT INVERT** option and hit the ►-button to select.
- Use the ▲/▼ buttons to select **OFF/ON**
- Press the ►-button to confirm.

PERFORM

Used to select the cooling mode

- Press the ►-button to open the menu. (Enter the password if prompted)
- Press the ▲/▼ buttons to select **OPTION** and hit the ►-button to select
- Press the ▲/▼ buttons to select the **PERFORM** option and hit the ►-button to select.
- Use the ▲/▼ buttons to select the correct mode
 - **STUDIO:** Silent mode, perfect for use in theatres. (output is slightly lower to assure good cooling)
 - **POWER:** Full power mode, perfect for use on rock festival stages (best cooling + light output)
 - **LIVE:** Temperature controlled mode, standard mode. (best balance between cooling + light output)
- Press the ►-button to confirm.

BLACKOUT

Used to select the move-in-dark function

- Press the ►-button to open the menu. (Enter the password if prompted)
- Press the ▲/▼ buttons to select **OPTION** and hit the ►-button to select
- Press the ▲/▼ buttons to select the **BLACKOUT** option and hit the ►-button to select.
- Use the ▲/▼ buttons to select **ON/OFF**
- Press the ►-button to confirm.

PT ENCODER

Used to enable/disable the Pan/Tilt feedback sensor

- Press the ►-button to open the menu. (Enter the password if prompted)
- Press the ▲/▼ buttons to select **OPTION** and hit the ►-button to select
- Press the ▲/▼ buttons to select the **PT ENCODER** option and hit the ►-button to select.
- Use the ▲/▼ buttons to select **ON/OFF**
- Press the ►-button to confirm.

DIMMER

Used to select the dimmer fade out speed

- Press the ►-button to open the menu. (Enter the password if prompted)
- Press the ▲/▼ buttons to select **OPTION** and hit the ►-button to select
- Press the ▲/▼ buttons to select the **DIMMER** option and hit the ►-button to select.
- Use the ▲/▼ buttons to select:
 - **DIM4:** 0.6s fade out
 - **OFF:** No fade time on Dimmer (LED behavior)
- Press the ►-button to confirm.

LED PWM

Used to select the PWM frequency of the LED

- Press the ►-button to open the menu. (Enter the password if prompted)
- Press the ▲/▼ buttons to select **OPTION** and hit the ►-button to select
- Press the ▲/▼ buttons to select the **LED PWM** option and hit the ►-button to select.
- Use the ▲/▼ buttons to select the correct frequency
- Press the ►-button to confirm.

DMX ERROR

Used to select the behavior of the fixture when no DMX is received

- Press the ►-button to open the menu. (Enter the password if prompted)
- Press the ▲/▼ buttons to select **OPTION** and hit the ►-button to select
- Press the ▲/▼ buttons to select the **DMX ERROR** option and hit the ►-button to select.
- Use the ▲/▼ buttons to select the correct mode
 - **Freeze:** Fixture holds last received values

- **Blackout:** Fixture turns the LED OFF and turns to a base position
- Press the ►-button to confirm.

DISPLAY TIME

Used to select the ON time of the display

- Press the ►-button to open the menu. (Enter the password if prompted)
- Press the ▲/▼ buttons to select **OPTION** and hit the ►-button to select
- Press the ▲/▼ buttons to select the **DISPLAY TIME** option and hit the ►-button to select.
- Use the ▲/▼ buttons to select the desired setting
- Press the ►-button to confirm.

IMPORTANT NOTE: when the display turns dark, press the ◀-button (◀-button) during 5 seconds!

MENU LOCK

Used to lock the menu

- Press the ►-button to open the menu. (Enter the password if prompted)
- Press the ▲/▼ buttons to select **OPTION** and hit the ►-button to select
- Press the ▲/▼ buttons to select the **MENU LOCK** option and hit the ►-button to select.
- Use the ▲/▼ buttons to select **ON/OFF**
- Press the ►-button to confirm.

Note: press the ▲/▼/▲/▼/►-buttons successively to unlock the menu when it is locked.

LOAD PARA

Used to share menu settings over DMX

- Press the ►-button to open the menu. (Enter the password if prompted)
- Press the ▲/▼ buttons to select **OPTION** and hit the ►-button to select
- Press the ▲/▼ buttons to select the **LOAD PARA** option and hit the ►-button to select.
- Use the ▲/▼ buttons to select
 - **ON:** Download data off the DMX line
 - **OFF:** Share data on the DMX line
- Press the ►-button to confirm.

WDMX PAIR

Used to Pair/Unpair the WDMX

- Press the ►-button to open the menu. (Enter the password if prompted)
- Press the ▲/▼ buttons to select **OPTION** and hit the ►-button to select
- Press the ▲/▼ buttons to select the **WDMX RESET** option and hit the ►-button to select.
- Use the ▲/▼ buttons to select
 - **PAIR:** Enables WMDX pairing mode
 - **UNPAIR:** Reset current connection
- Press the ►-button to confirm.

SIGNAL

Used to enable WDMX operation

- Press the ►-button to open the menu. (Enter the password if prompted)
- Press the ▲/▼ buttons to select **OPTION** and hit the ►-button to select
- Press the ▲/▼ buttons to select the **SIGNAL** option and hit the ►-button to select.
- Use the ▲/▼ buttons to select
 - **ONLY XLRDMX:** WDMX disabled
 - **XLRDMX First:** Can receive XLRDMX and WDMX but prioritize XLRDMX
 - **ONLY WDMX:** Receive only WDMX
 - **WDMX First:** Can receive XLRDMX and WDMX but prioritize WDMX
 - **WDMX TO XLR DMX:** WDMX enabled and DMX output on XLR output
- Press the ►-button to confirm.

COLOR CALI

Used to create or select a color calibration

- Press the ►-button to open the menu. (Enter the password if prompted)
- Press the ▲/▼ buttons to select **OPTION** and hit the ►-button to select
- Press the ▲/▼ buttons to select the **COLOR CALI** option and hit the ►-button to select.
- Use the ▲/▼ buttons to select:
 - **OFF:** RAW uncalibrated power of the LEDs

- **USER CALIBRATION:** Create a custom white balance
- **6500K Calibration:** Set a 6500K white balance
- **Factory calibration:** Default factory calibration
- Press the ►-button to confirm.

NETWORK

Used to set the network settings of the fixture

- Press the ►-button to open the menu. (Enter the password if prompted)
- Press the ▲/▼ buttons to select **OPTION** and hit the ►-button to select
- Press the ▲/▼ buttons to select the **NETWORK** option and hit the ►-button to select.
- Use the ▲/▼ buttons to select
 - **Net switch:** create random 2.x.x.x or 10.x.x.x IP address with subnetmask 255.0.0.0
 - **Universe:** Select the receiving universe
 - **IP Mode:** Select/Create the IP address used by the fixture
- Press the ►-button to confirm.

EDIT

Used to edit custom patterns for standalone use

- Press the ►-button to open the menu. (Enter the password if prompted)
- Press the ▲/▼ buttons to select the **EDIT** option and hit the ►-button to select.
- Use the ▲/▼ buttons to select the program to edit (**EDIT1** or **EDIT2**)
- Press the ►-button to set the values for step 1
 - **Pan**
 - **Tilt**
 - **...:** Set the desired value for the channel
 - **Time:** duration of the step between 0-25s
 - **Use:** Activate/Disable step
- Press the ►-button to confirm.
- Continue for step 2-30
- Use CLEAN Edit1/Edit2 to quickly reset the whole sequence

MANUAL

Menu with functions related to the overall settings of the fixture

AUTO TEST

Runs a sequence to check all the features

CHANNEL

Used to test individual channels of the fixture

- Press the ►-button to open the menu. (Enter the password if prompted)
- Press the ▲/▼ buttons to select the **MANUAL** option and hit the ►-button to select.
- Press the ▲/▼ buttons to select the **CHANNEL** option and hit the ►-button to select.
- Press the ▲/▼ buttons to select the desired channel and hit the ►-button to select the channel
- Press the ▲/▼ buttons to change the value of the channel.
- Press the ◀-button to exit the channel.

CCT

Selects a CCT preset.

This preset is not saved anywhere and is for demo purpose only

Preset color

Selects a Color preset.

This preset is not saved anywhere and is for demo purpose only

CMY

Selects a CMY preset.

This preset is not saved anywhere and is for demo purpose only

DEBUG HIDE

Factory testing mode.

This disables all motors, motors can only be activated again with a reset.

RESET

Used to manually reset the fixture

- Press the ►-button to open the menu. (Enter the password if prompted)
- Press the ▲/▼ buttons to select the **MANUAL** option and hit the ►-button to select.
- Press the ▲/▼ buttons to select the **RESET** option and hit the ►-button to select.
- Use the ▲/▼ buttons to select
 - **ALL RESET:** Reset the entire fixture
 - **PT RESET:** Reset the pan/tilt motors
 - **OTHER RESET:** Reset the Zoom motor
- Press the ►-button to confirm.

SERVICE

Used to calibrate the motor positions

- Press the ►-button to open the menu. (Enter the password if prompted)
- Press the ▲/▼ buttons to select the **SERVICE** option and hit the ►-button to select.
- Enter the password (Up-Down-Up-Down)
- Use the ▲/▼ buttons to select the function to calibrate and hit the ►-button to select
- Use the Up: Down buttons to edit the base value (-127 to +127) and hit the ►-button to confirm

INFO

Menu with Information about the fixture

FIXTURE HOURS

Displays the total active hours of the fixture

LED USE HOURS

Displays the total active hours of the LED

TEMPERATURE

Displays the temperature of the LED unit

VERSION

Displays the current fixture firmware version

Network

Displays the current networking information

RDM

Displays the RDM information of the fixture

RDM UID: 0x2122005B**** (**** = unique number)
RDM Label: BTI-BLIZZARD WASH2

SYSTEM ERROR

Displays possible system errors

Update software

Menu for firmware updates via USB-C

- Prepare a USB-C memory stick: format the drive in your PC using the FAT32 system.
- The firmware file(s) always end with “.nyj”: put the(se) file(s) in the root of the USB-C memory stick.
- Insert the USB-C drive into the USB-C port on the back of the projector base.
- Press the ENTER button to open the menu. (Enter the password if prompted)
- Press the ▲/▼ buttons to select the **UPDATE SOFTWARE** option and hit the ENTER button to select.
- Press the ENTER button to start the software update.

Note1: the names of the files on the USB-C memory stick should not have more than 8 characters!

Note2: use a small USB to USB-C conversion adapter or cable if you have a normal USB memory stick.

Factory reset

Menu to reset the fixture back to its default settings

DMX CHANNELS

The unit is equipped with 7 different DMX modes:

- **HSIC:** 28 Channels
- **SSP:** 26 Channels
- **TOUR:** 31 Channels
- **TR16:** 38 Channels
- **CMY:** 32 Channels
- **PIXEL:** 133 Channels
- **PXL RGLB:** 112 Channels

Reduced DMX Chart

HSIC	SSP	TOUR	TR16	CMY	PIXEL	PXL RGLB	Function
1	1	1	1	1	1	-	Pan
2	-	-	2	2	2	-	Pan_fine
3	2	2	3	3	3	-	Tilt
4	-	-	4	4	4	-	Tilt_fine
5	3	3	5	5	5	-	P/T Speed
6	-	-	-	-	-	-	Intensity
7	-	-	-	-	-	-	Hue
8	-	-	-	-	-	-	Hue_fine
9	-	-	-	-	-	-	Saturation
-	-	-	-	6	-	-	Cyan
-	-	-	-	7	-	-	Magenta
-	-	-	-	8	-	-	Yellow
-	4	4	6	-	-	-	Red
-	-	-	7	-	-	-	Red_fine
-	5	5	8	-	-	-	Green
-	-	-	9	-	-	-	Green_fine
-	6	6	10	-	-	-	Blue
-	-	-	11	-	-	-	Blue_fine
-	7	7	12	-	-	-	Lime
-	-	-	13	-	-	-	Lime_fine
-	8	8	14	9	6	-	Dimmer
-	-	-	15	-	-	-	Dimmer_fine
11	9	9	16	10	7	-	Strobe
-	-	10	17	11	8	-	Color presets
10	-	11	18	12	9	-	CCT
-	-	12	19	13	-	-	Static pixel
-	-	13	20	14	-	-	Pixel effect
-	-	14	21	15	-	-	Pixel effect speed
12	10	15	22	16	10	-	Zoom
13	11	16	23	17	-	-	Mask_Red
14	12	17	24	18	-	-	Mask_Green
15	13	18	25	19	-	-	Mask_Blue
16	14	19	26	20	11	-	Mask_Color preset
17	15	20	27	21	-	-	Mask_FX
18	16	21	28	22	-	-	Mask_FX Speed
19	17	22	29	23	12	-	Mask_Dimmer
20	18	23	30	24	13	-	Ring_Red
21	19	24	31	25	14	-	Ring_Green
22	20	25	32	26	15	-	Ring_Blue
23	21	26	33	27	16	-	Ring_Color preset
24	22	27	34	28	17	-	Ring_FX
25	23	28	35	29	18	-	Ring_FX Speed
26	24	29	36	30	19	-	Ring_Dimmer
27	25	30	37	31	20	-	Pixel control
28	26	31	38	32	21	-	Control
-	-	-	-	-	22	1	Red_1
-	-	-	-	-	23	2	Green_1
-	-	-	-	-	24	3	Blue_1
-	-	-	-	-	25	4	Lime_1

-	-	-	-	-
-	-	-	-	-	94	98	Red_19
-	-	-	-	-	95	99	Green_19
-	-	-	-	-	96	100	Blue_19
-	-	-	-	-	97	101	Lime_19
-	-	-	-	-	98	77	Mask_Red_1
-	-	-	-	-	99	78	Mask_Green_1
-	-	-	-	-	100	79	Mask_Blue_1
-	-	-	-	-
-	-	-	-	-	131	110	Mask_Red_12
-	-	-	-	-	132	111	Mask_Green_12
-	-	-	-	-	133	112	Mask_Blue_12

Full DMX Chart

HSIC	SSP	TOUR	TR16	CMY	PIXEL	PXL RGBL	Function	Values	Information	Defaults
1	1	1	1	1	1	-	Pan	0-65535		128/32767
2	-	-	2	2	2	-	Pan_fine			
3	2	2	3	3	3	-	Tilt	0-65535		128/32767
4	-	-	4	4	4	-	Tilt_fine			
5	3	3	5	5	5	-	P/T Speed	0-255		0
6	-	-	-	-	-	-	Intensity	0-255		0
7	-	-	-	-	-	-	Hue	0-65535		0
8	-	-	-	-	-	-	Hue_fine			
9	-	-	-	-	-	-	Saturation	0-255		0
-	-	-	-	6	-	-	Cyan	0-255		0
-	-	-	-	7	-	-	Magenta	0-255		0
-	-	-	-	8	-	-	Yellow	0-255		0
-	4	4	6	-	-	-	Red	0-255		255/65535
-	-	-	7	-	-	-	Red_fine	0-65535		
-	5	5	8	-	-	-	Green	0-255		255/65535
-	-	-	9	-	-	-	Green_fine	0-65535		
-	6	6	10	-	-	-	Blue	0-255		255/65535
-	-	-	11	-	-	-	Blue_fine	0-65535		
-	7	7	12	-	-	-	Lime	0-255		255/65535
-	-	-	13	-	-	-	Lime_fine	0-65535		
-	8	8	14	9	6	-	Dimmer	0-255		255/65535
-	-	-	15	-	-	-	Dimmer_fine	0-65535		
11	9	9	16	10	7	-	Strobe	0-9	Open	7
								10-99	Strobe	
								100-109	Open	
								110-179	Lightning	
								180-189	Open	
							190-255	Random strobe		
-	-	10	17	11	8	-	Color presets	0-10	Disabled	0
								11-255	Preset colors	
10	-	11	18	12	9	-	CCT	0-9	Disabled	0
								10-255	Linear CCT 1800K-10000K	
-	-	12	19	13	-	-	Static pixel	0-10	Disabled	0
								11-255	Static pixel	
-	-	13	20	14	-	-	Pixel effect	0-10	Disabled	0
								11-255	Pixel effect	
-	-	14	21	15	-	-	Pixel effect speed	0-255		128
12	10	15	22	16	10	-	Zoom	0-255		128
13	11	16	23	17	-	-	Mask_Red	0-255		255
14	12	17	24	18	-	-	Mask_Green	0-255		255
15	13	18	25	19	-	-	Mask_Blue	0-255		255
16	14	19	26	20	11	-	Mask_Color preset	0-9	Disabled	0
								10-174	Static colors	
								175-255	Color scroll	

17	15	20	27	21	-	-	Mask_FX	0-10	Disabled	0
								11-120	FX 1-11	
								121-210	FX 12-20 (Fixed colors)	
								211-255	Disabled	
18	16	21	28	22	-	-	Mask_FX Speed	0-255		128
19	17	22	29	23	12	-	Mask_Dimmer	0-255		0
20	18	23	30	24	13	-	Ring_Red	0-255		255
21	19	24	31	25	14	-	Ring_Green	0-255		255
22	20	25	32	26	15	-	Ring_Blue	0-255		255
23	21	26	33	27	16	-	Ring_Color preset	0-9	Disabled	0
								10-174	Static colors	
								175-255	Color scroll	
24	22	27	34	28	17	-	Ring_FX	0-10	Disabled	0
								11-120	FX 1-11	
								121-210	FX 12-20 (Fixed colors)	
								211-255	Disabled	
25	23	28	35	29	18	-	Ring_FX Speed	0-255		128
26	24	29	36	30	19	-	Ring_Dimmer	0-255		0
27	25	30	37	31	20	-	Pixel control	0-15	DMX control (macros)	0
								16-238	Mixed mode (crossfade)	
								239-255	ART-NET or SACN mode	
28	26	31	38	32	21	-	Control	0-10	No function	0
								11-20	BO on P/T enabled	
								21-30	BO on P/T disabled	
								31-40	Pan invert	
								41-50	Tilt invert	
								51-60	P/T invert off	
								61-70	Fan mode: Studio	
								71-80	Fan mode: Live	
								81-90	Fan mode: Power	
								91-100	Dim speed: Dim4	
								101-110	Dim speed: Dim0	
								111-120	Dim curve: Linear	
								121-130	Dim curve: Square	
								131-140	Dim curve: Inv.Square	
								141-150	Dim curve: S-curve	
								151-160	PWM: 1200Hz	
								161-170	PWM: 2400Hz	
								171-180	PWM: 4000Hz	
								181-190	PWM: 6000Hz	
								191-200	PWM: 25000Hz	
201-210	Reset All									
211-220	Reset P/T									
221-230	Reset Zoom									
231-235	LED Calibration off									
236-240	LED User calibration									
241-245	6500K Calibration									
246-255	Factory LED calibration									
-	-	-	-	-	22	1	Red_1	0-255		255
-	-	-	-	-	23	2	Green_1	0-255		255
-	-	-	-	-	24	3	Blue_1	0-255		255
-	-	-	-	-	25	4	Lime_1	0-255		255
-	-	-	-	-	94	73	Red_19	0-255		255
-	-	-	-	-	95	74	Green_19	0-255		255
-	-	-	-	-	96	75	Blue_19	0-255		255
-	-	-	-	-	97	76	Lime_19	0-255		255
-	-	-	-	-	98	77	Mask_Red_1	0-255		255
-	-	-	-	-	99	78	Mask_Green_1	0-255		255
-	-	-	-	-	100	79	Mask_Blue_1	0-255		255
-	-	-	-	-	131	110	Mask_Red_12	0-255		255
-	-	-	-	-	132	111	Mask_Green_12	0-255		255
-	-	-	-	-	133	112	Mask_Blue_12	0-255		255

MAINTENANCE

- Make sure the area below the installation place is free from unwanted persons during servicing.
- Switch off the unit, unplug the mains cable and wait until the unit has been cooled down.

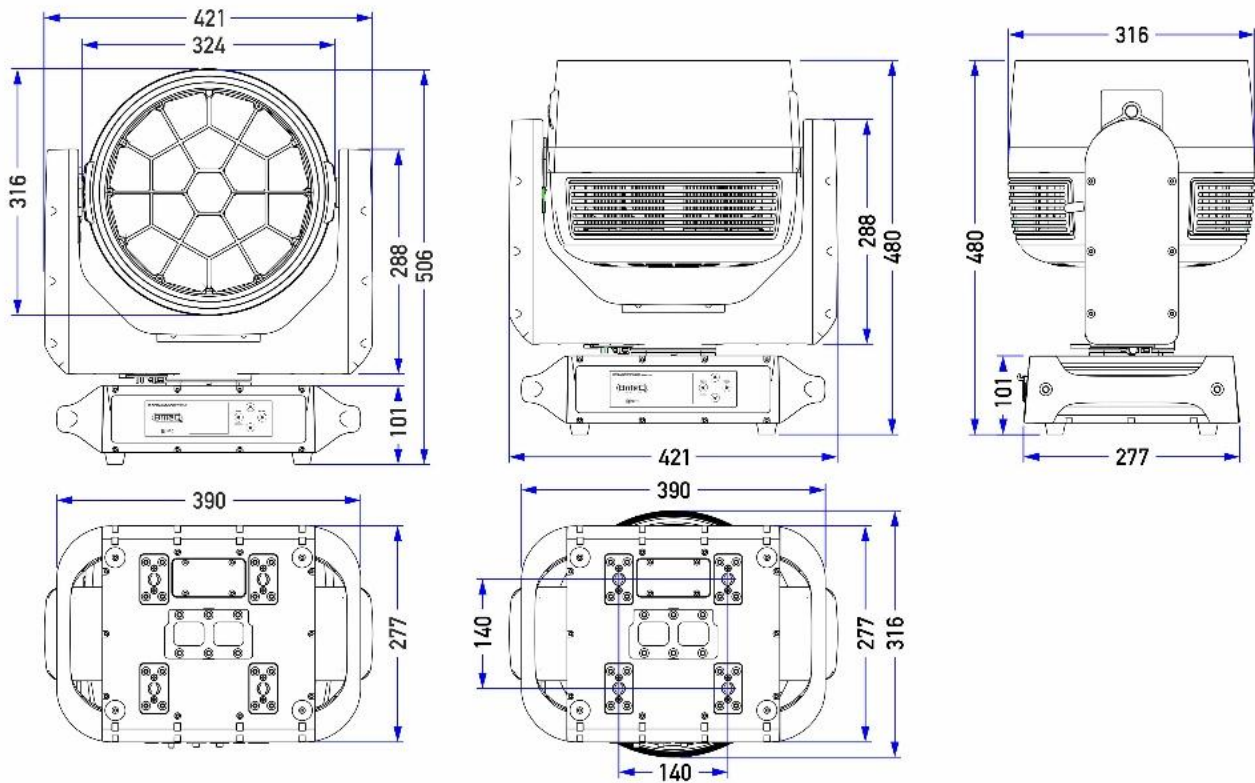
During inspection the following points should be checked:

- All screws used for installing the device and any of its parts should be tightly fastened and may not be corroded.
- Housings, fixations and installations spots (ceiling, truss, suspensions) should be totally free from any deformation.
- When an optical lens is visibly damaged due to cracks or deep scratches, it must be replaced.
- The mains cables must be in impeccable condition and should be replaced immediately when even a small problem is detected.
- To protect the device from overheat the cooling fans (if any) and ventilation openings should be cleaned monthly.
- The interior of the device should be cleaned annually using a vacuum cleaner or air-jet.
- The cleaning of internal and external optical lenses and/or mirrors must be carried out periodically to optimize light output. Cleaning frequency depends on the environment in which the fixture operates: damp, smoky or particularly dirty surroundings can cause greater accumulation of dirt on the unit's optics.
 - Clean with a soft cloth using normal glass cleaning products.
 - Always dry the parts carefully.
 - Clean the external optics at least once every 30 days.

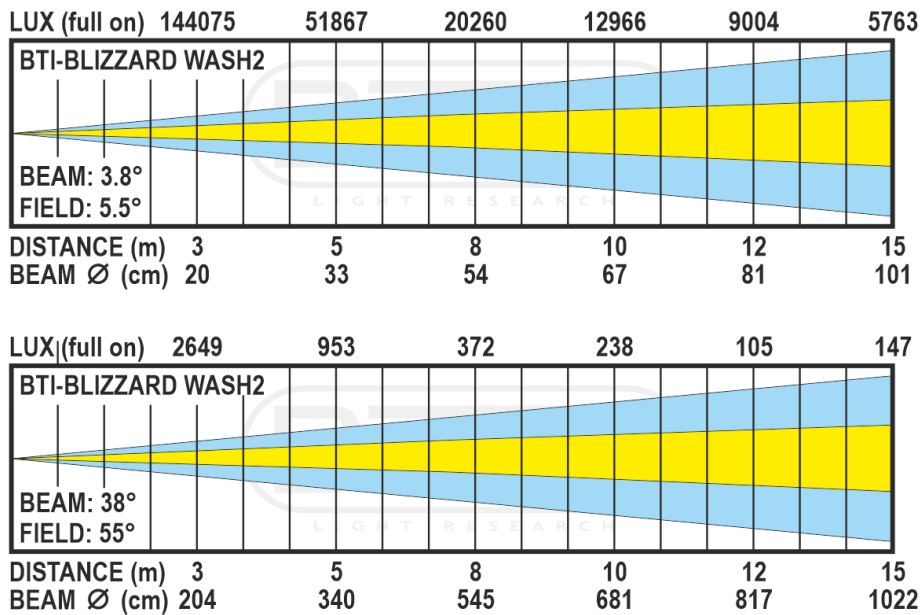
SPECIFICATIONS

This device carries the prescribed CE marking. It was tested for this purpose in a specialized CE lab and fully complies with all currently valid European and national standards. The corresponding CE conformity declarations can be found on the product page of this product on our website.

Mains Input:	AC 100~240V, 50/60Hz
Power consumption:	1000 Watt (max.)
IP-rating:	IP66
Operation Temperature:	-20°C → +45°C
Fuse:	16A / 250V slow.
Optional backup battery:	model 18650 * 3,7V Li-ion
Sound Control:	none
DMX connections:	5pin XLR IN/OUT, RDM compatible, wireless (W-DMX/CRMX), RJ45 (Art-Net and sACN compatible)
Movement:	Pan: 540° Tilt: 210°
Beam angle:	3.5° → 38°
Field angle:	5° → 55°
DMX channels used:	26, 28, 31, 32, 38, 112 and 133 Channels
Lamp:	19x 50W RGBL LED
Size:	See drawing below
Weight:	22.3 kg



LUX CHART



All the information is subject to change without prior notice
 You can download the latest version of this user manual on our website: www.briteq-lighting.com



MAILING LIST

EN: Subscribe today to our mailing list for the latest product news!

FR: Inscrivez-vous à notre liste de distribution si vous souhaitez suivre l'actualité de nos produits!

NL: Abonneer je vandaag nog op onze mailinglijst en ontvang ons laatste product nieuws!

DE: Abonnieren Sie unseren Newsletter und erhalten Sie aktuelle Produktinformationen!

ES: Suscríbete hoy a nuestra lista de correo para recibir las últimas noticias!

PT: Inscreva-se hoje na nossa mailing list para estar a par das últimas notícias!

WWW.BRITEQ-LIGHTING.COM

Copyright © 2024 by BEGLEC NV

't Hofveld 2C ~ B1702 Groot-Bijgaarden ~ Belgium

Reproduction or publication of the content in any manner, without express permission of the publisher, is prohibited.