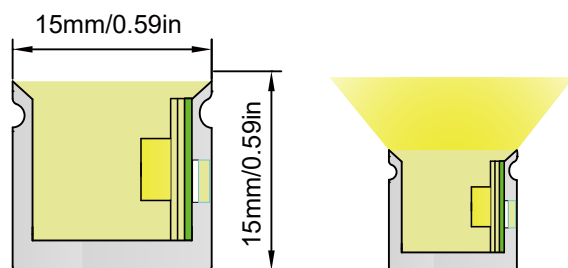


SIDE VIEW NEON FLEX

15X15MM (Square Shape)



Product Features



1. 15*15mm middle standard size, with side view uniform light.
2. High quality silicone, corrosion resistance, anti-yellowing.
3. Good flexibility, good bending, easy modeling and anti-pulling force.
4. Silicone extrusion process, IP67 protection level.
5. Applied for indoor&outdoor decorative lighting and architectural outline lighting etc.
6. Warranty: 3 years.

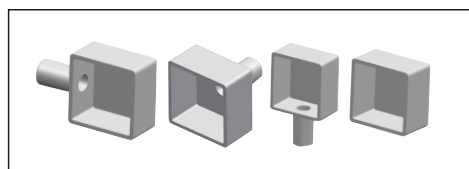
CCT Option

Part No.	CRI	Power	CCT (°K)	Input Current	Light Eff. (4000K)	Brightness (4000K)	Maximum Length
RS-1515-24V10-2835S-120D	>90	10W/m (3.05W/ft)	2700K-6500K	0.426A/m (0.130A/ft)	60lm/W	609lm/M (186lm/ft)	5M (16.4ft)
RS-1515-24V10-2835S-160D(1LED/Cut)	>90	10W/m (3.05W/ft)	2700K-6500K	0.424A/m (0.129A/ft)	44lm/W	449lm/M (137lm/ft)	5M (16.4ft)
RS-1515-24V10-2835CAS-240D	>90	12W/m (3.66W/ft)	2700K+6500K	0.797A/m (0.243A/ft)	51lm/W	612lm/M (187lm/ft)	5M (16.4ft)
RS-1515-24V10-3838RGBS-140D(RTR)	/	14W/m (4.27W/ft)	RGB	0.587A/m (0.179A/ft)	21lm/W	289lm/M (88lm/ft)	5M (16.4ft)
RS-1515-24V10-5050RGBWS-120D	>90	15W/m (4.57W/ft)	RGBW	0.592A/m (0.180A/ft)	29lm/W	415lm/M (127lm/ft)	5M (16.4ft)
RS-1515-24V10-2835S-168D	>90	8W/m (2.44W/ft)	2700K-6500K	0.339A/m (0.103A/ft)	60lm/W	489lm/M (149lm/ft)	5M (16.4ft)
RS-1515-24V10-SPI3838RGBS-140D	/	12W/m (3.66W/ft)	RGB	0.518A/m (0.158A/ft)	21lm/W	258lm/M (79lm/ft)	5M (16.4ft)

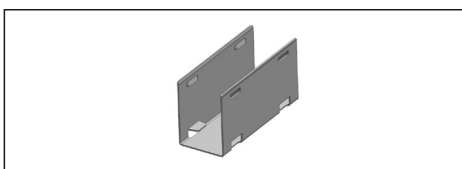
Note:

1. The data base on IP67 Neon Flex.
2. The wattage tolerance $\pm 10\%$
3. The Lumen output value tolerance $\pm 5\%$ due to testing way.
4. The CCT tolerance $\pm 5\%$

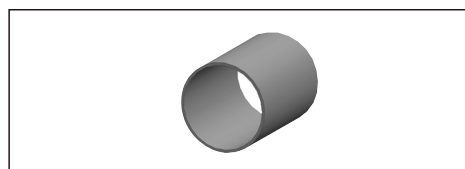
Regular Installation Accessory



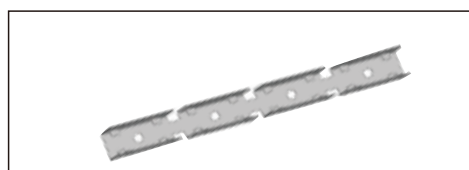
A
End cap (Side/Bottom/Straight/No wire layout) S1515



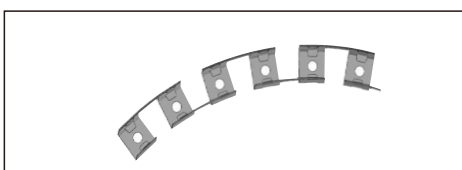
B
Stainless steel clip S1515



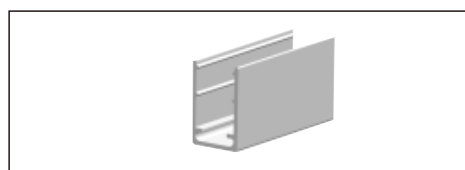
C
Stainless steel round hoop



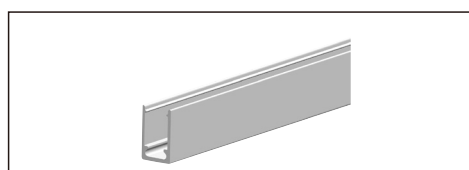
D
Straight type stainless steel buckle belt S1515



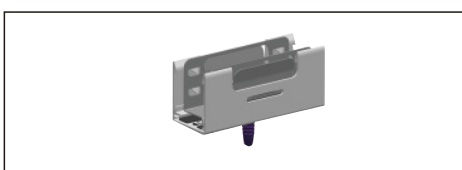
E
S-shaped stainless steel buckle belt S1515



F
Aluminum clip S1515



G
Aluminum groove S1515

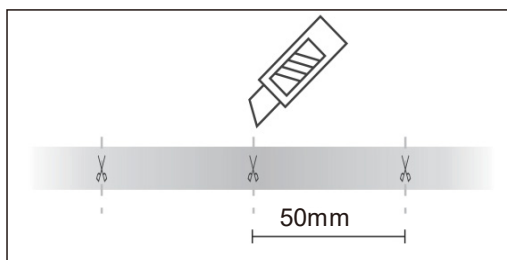


H
Catapult clip S1515

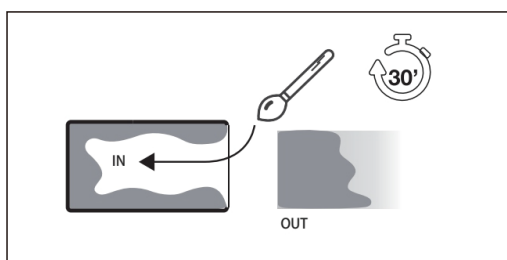


I
Catapult groove S1515

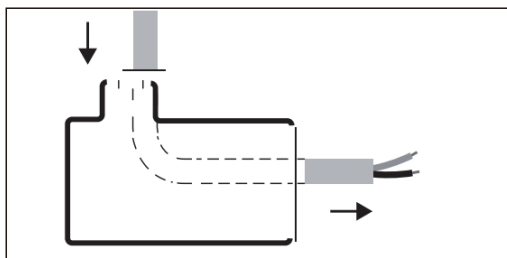
Installation accessories



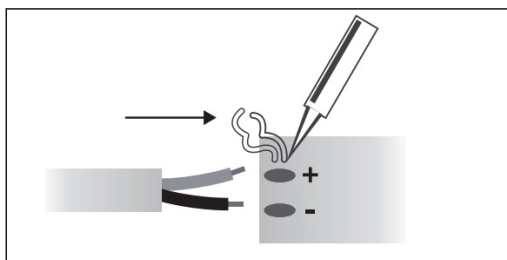
1. Cut according to the required length. The strip has a mark every 50mm. Cut at the mark position.



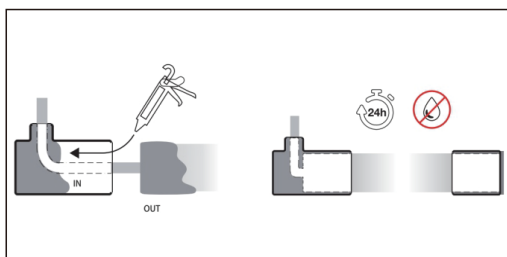
2. At the end of the outlet line, the inside of the plug and the outside of the strip are coated with special silica gel adhesive, and then put into the lamp band and use after 30 minutes.



3. Need outlet: penetrate wire into the plug hole to the other end of the plug.



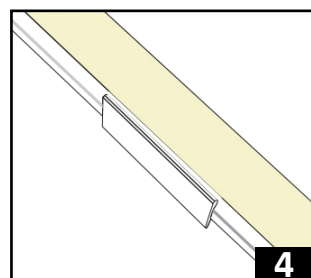
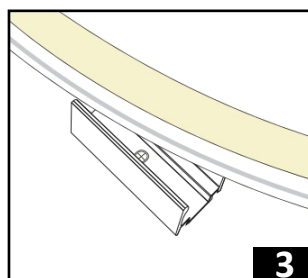
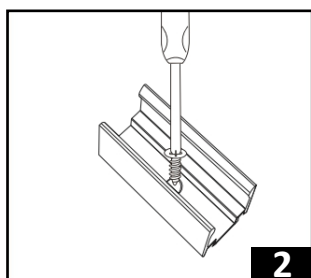
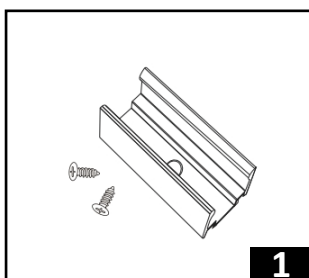
4. Find the soldering pad on the back of led strip, and solder the wire to the led strip. Make sure the pole is correct.



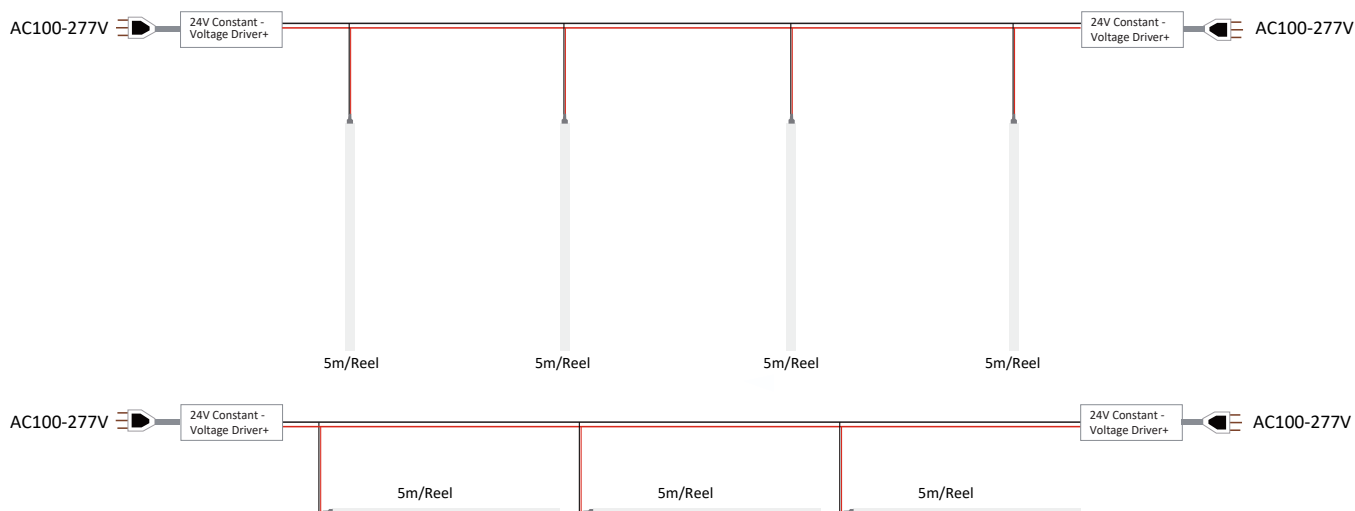
5. After above 4 procedures, sticking the end cap on neon flex with special silicone glue, and let it stand at least 1 hr before using.

Installation of fix clip

Find the right screw to ensure that the head of the screw is not too high. Fix the fastener in the desired position. Finally, clip the strip in the slot.

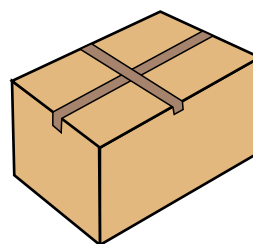
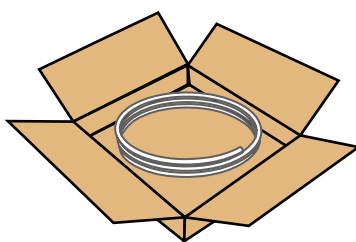


Wiring Diagram Application



Packaging

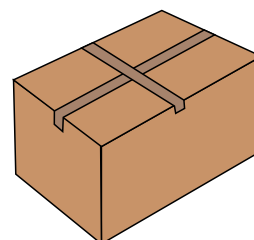
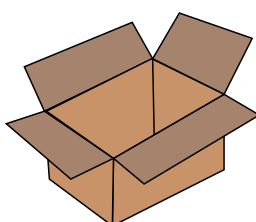
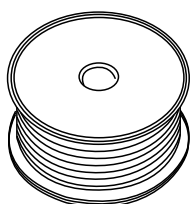
5m reel+Anti-electrostatic bag+Carton packaging



20m reel

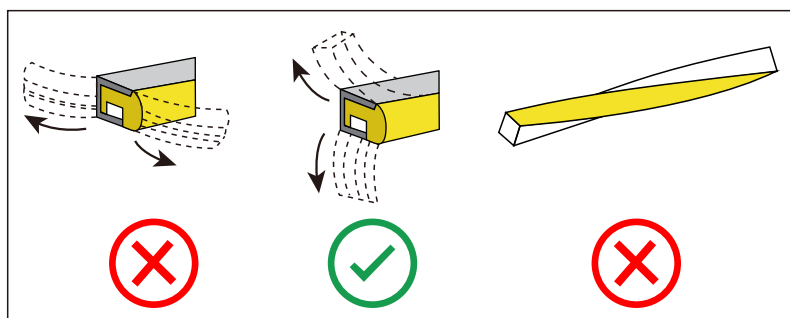
Carton packaging

5m reel+Anti-electrostatic bag+Carton packaging



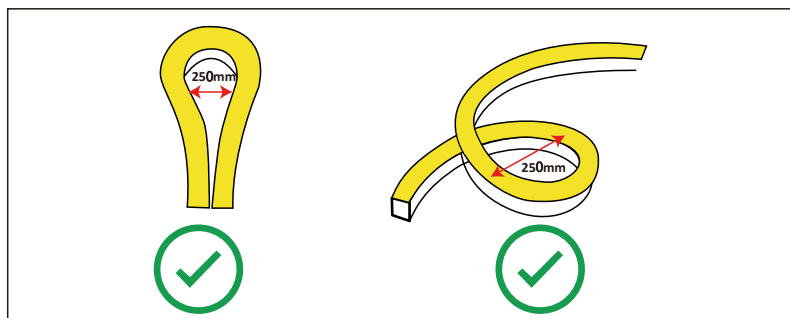
Attention

1.This product uses low voltage DC power supply, must use Ac-DC switch. Use the power supply after voltage conversion! It is strictly forbidden to directly connect the LED light bar with AC 110V or AC 220VAC mains voltage connection, otherwise it will damage strip, and may cause a safety accident!



2.Bending direction requirements.

Bending neon strip is required to bend along the upper and lower directions of the cross section, bending in the left and right directions of the cross section or seriously twisting will damage the strip.



3.Minimum bending diameter:

The minimum bending diameter of curved neon strip is not less than 250mm, and the bending diameter is less than 250mm, which will easily damage the strip. Left and right directions of the cross section or seriously twisting will damage the strip.

4.During installation and use, there is a possibility of soiling the light strip.

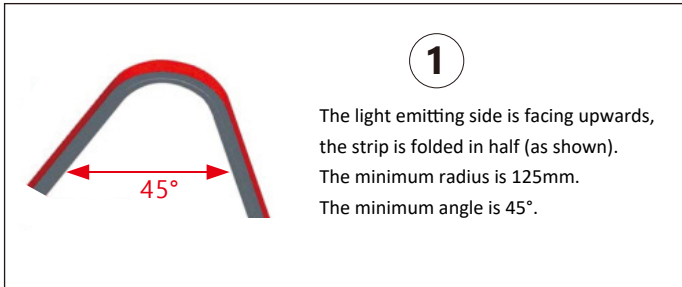
You can use a cotton cloth, dip it in clean water or sprinkle it, and gently wipe the dirty location to clean it.

4.Do not touch the product by means of heavy knocking or hammering;

Do not pull the lamp belt forcefully to avoid breaking the FPC in the product.

Do not pull the power cord forcefully to avoid the disc falling off; Pay attention to the wiring.

Angle



During installation and use, there is a possibility of soiling the light strip. You can use a cotton cloth, dip it in clean water or sprinkle it, and gently wipe the dirty location to clean it.

Safety & Disclosures

1. Do not install the neon flex in environment where excessive heat may occur.
2. Do not extend beyond the recommended maximum run length.
3. Only use copper wiring. Use wires rated for at least 176°F(80°C) and certified for use with external connection of electrical equipment.
4. Excessive handling, bending, and pressure may damage the product, influence the warranty.
5. Improper wire selection and installation could overheat wires, and cause fire.
6. Do not connect directly to high voltage or AC power.
7. Installation must be in accordance with local and national electrical code regulations.
8. To ensure safety and correct installation, our strips are intended to be installed by a qualified licensed electrician.