

HIGH EFFICIENCY SERIES

2835 128LEDs/m 18W/m

130
LM/W

24VDC

PCB
10MM

5M
REEL



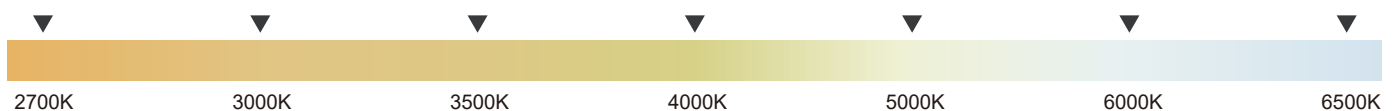
RS-HE2835-24V-128D-10-20



Product Features

1. Pass new ERP (EU) 2019/2020 regulation, Eco design compliant.
2. Light efficiency up to 130LM/W.
3. Color temperature between 1800-10000K is optional.
4. CRI80+, 90+, 95+ optional.
5. Operate longer life and better for energy saving.
6. Warranty: 3 years.

CCT Option

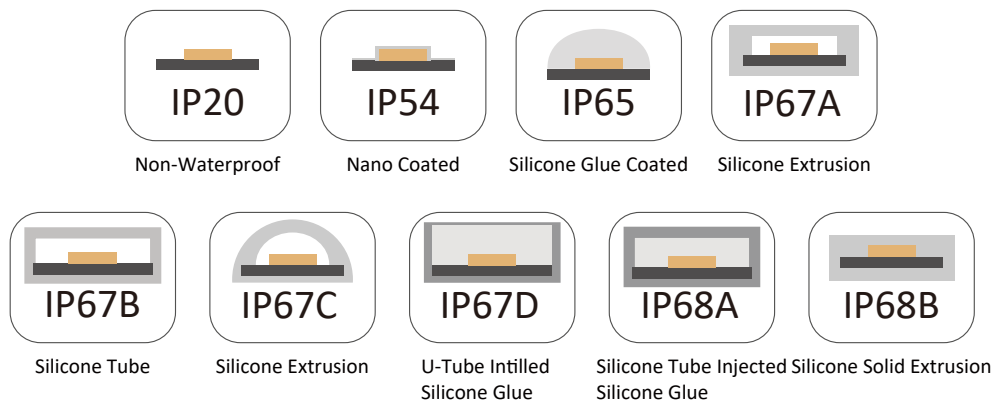


Lighting Effect

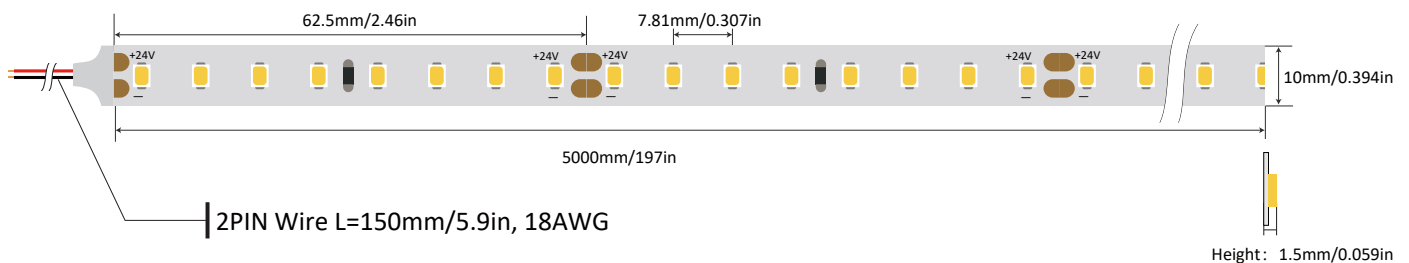


Lighting Effect

IP Rating Option



Dimension(mm/inch)



Length/Reel	Width	Height	LED Spacing	Min. Cutting
5000mm/197in	10mm/0.394in	1.5mm/0.059in	7.81mm/0.307in	Every 62.5mm/2.46in (8LED)

Note:

LED strip length tolerance is ± 20 mm.

Data

Part Number	Working Voltage	Power	Current	LED Qty	CRI
RS-HE2835-24V-128D-10-20	24V	18W/m	0.75A/m	128LED/m	90+
		5.49W/ft	0.23A/ft	≈39LEDs/ft	

CCT (°K)	Luminous Efficiency	lumen	Maximum Length
CRI>90 2700K	125lm/W	2250lm/m(686lm/ft)	5M(1.524ft)
3000K	125lm/W	2250lm/m(686lm/ft)	5M(1.524ft)
4000K	135lm/W	2430lm/m(741lm/ft)	5M(1.524ft)
6000K	135lm/W	2430lm/m(741lm/ft)	5M(1.524ft)

Note:

The data base on IP20 non-waterproof.

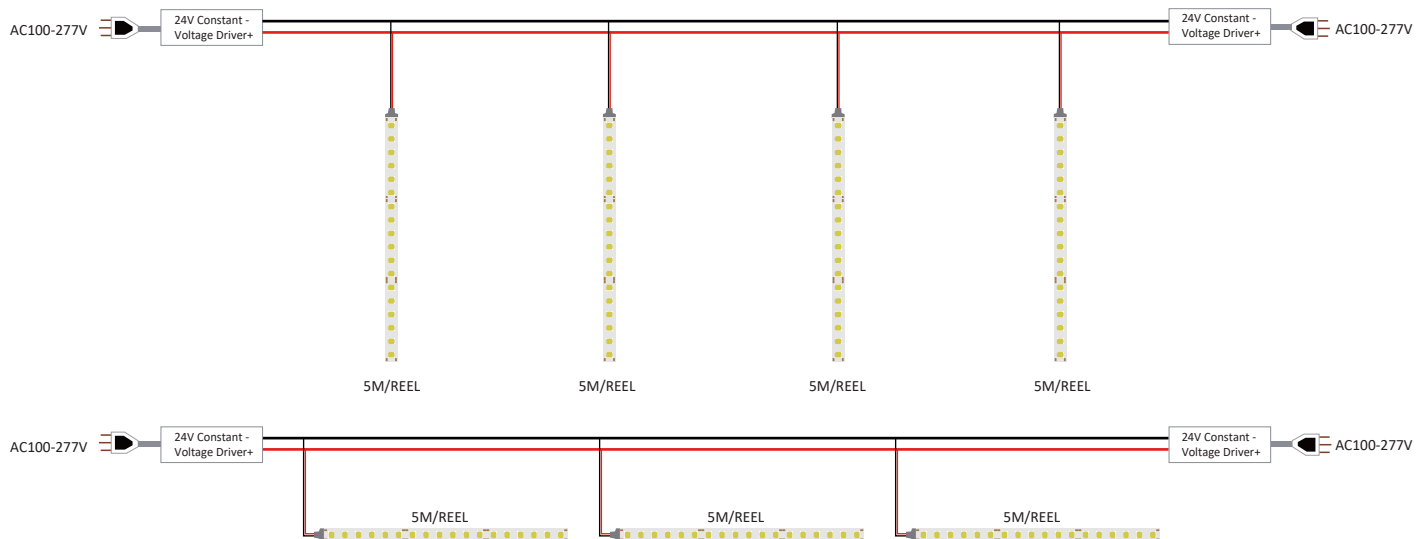
The Lumen output value tolerance ±5% due to testing way.

The CCT will be ±150K tolerance.

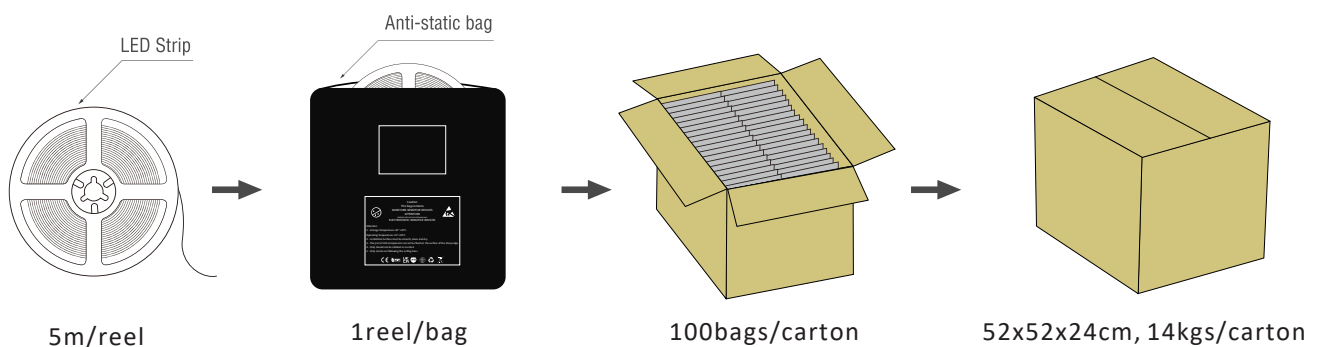
Absolute Maximum Ratings

Parameter	Symbol	Value
Thermal Measurement Point	Tc	80°C/176°F
Operating Temperature	Topr	<80°C/<176°F
Storage Temperature	Ts	-20~+ 60°C/-68~140°F
Number of FPC Connection		

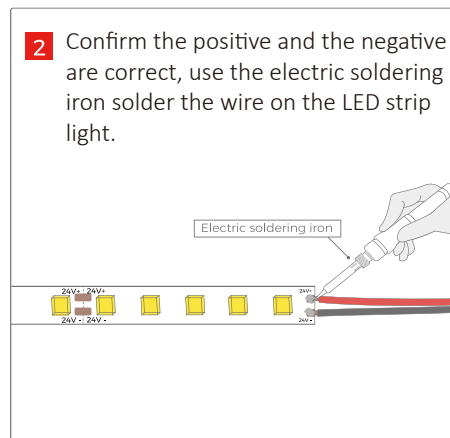
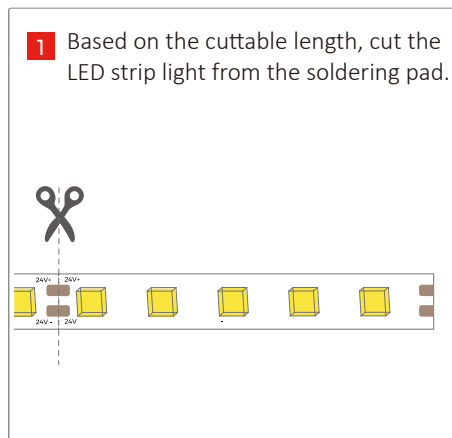
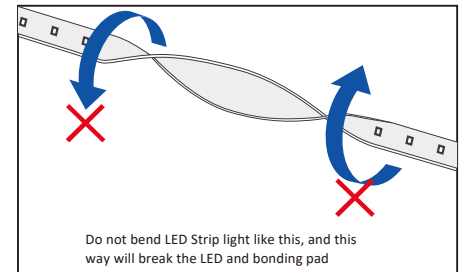
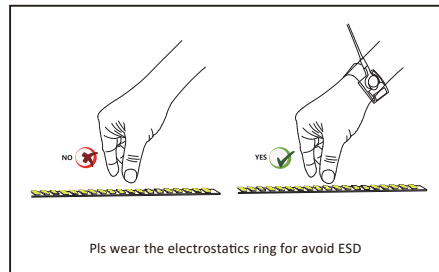
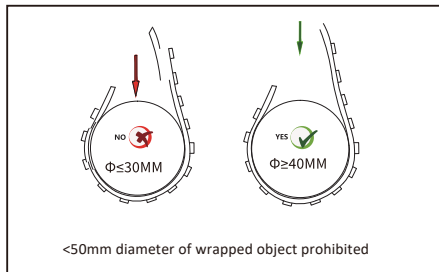
Wiring Diagram Application



Packaging



Cautions



Safety & Disclosures

1. Do not install the led strip in environment where excessive heat may occur.
2. Only use copper wiring. Use wires rated for at least 176°F(80°C) and certified for use with
3. Do not install IP20 LED strip products in outdoor / wet location environments.
4. Excessive handling, bending, and pressure may damage the product, voiding the warranty.
5. Improper wire selection and installation could overheat wires, and cause fire.
6. Do not connect directly to high voltage or AC power.
7. Installation must be in accordance with local and national electrical code regulations.
8. To ensure safety and correct installation, our strips are intended to be installed by a qualified, licensed electrician.