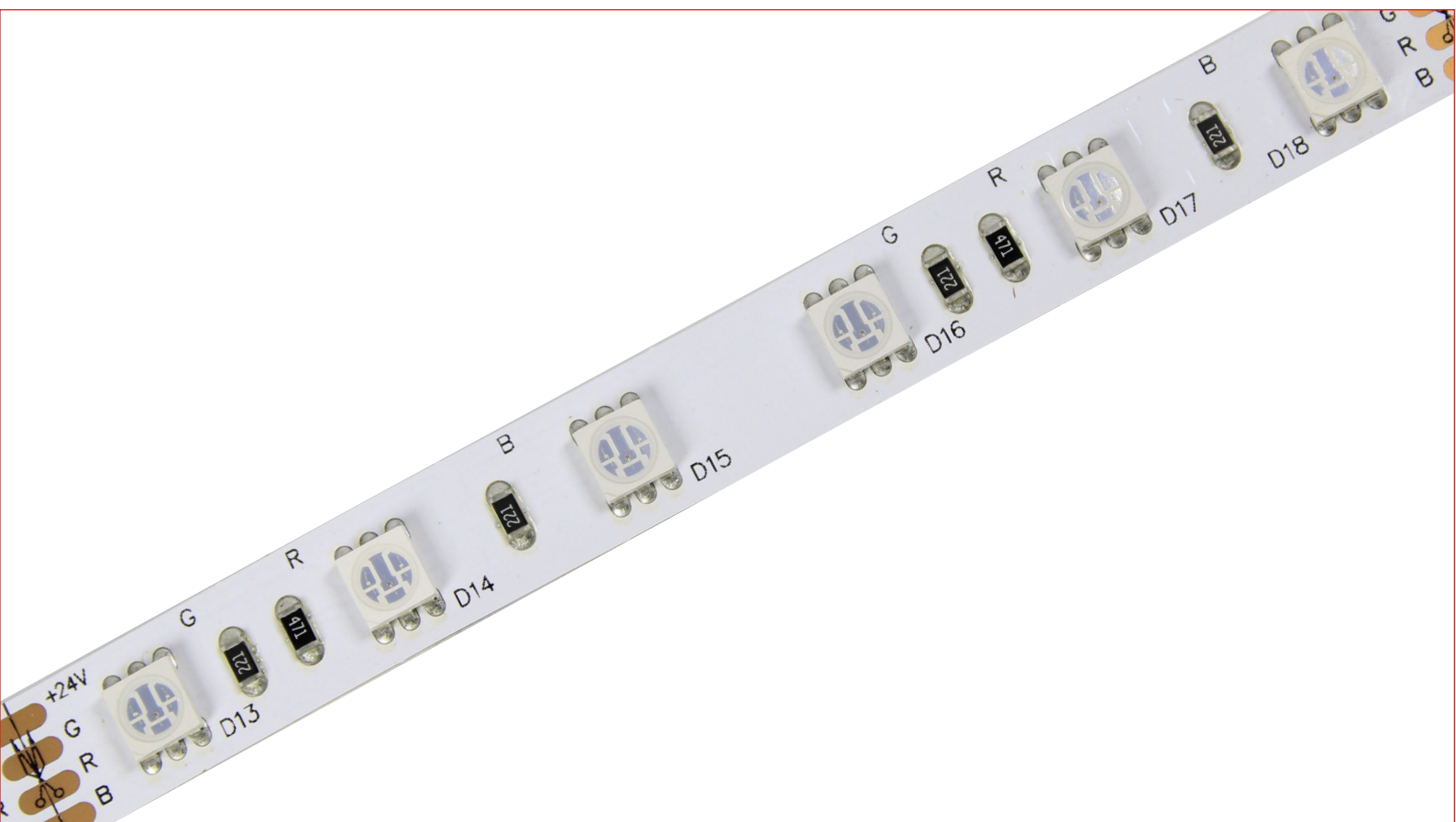


MULTI-COLOR SERIES

RGB4040 120LEDs/m 14.4W/m



RS-RGB4040-24V-120D-10-68



Product Features

1. Apply 4040 RGB LED, smooth color changing.
2. Compatible with most of RGB controller in the markets.
3. Ideal for office, residential, retail and industry lighting.
4. Warranty: 3 years.

CCT Option



Lighting Effect

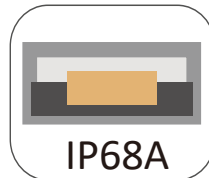


Lighting Effect



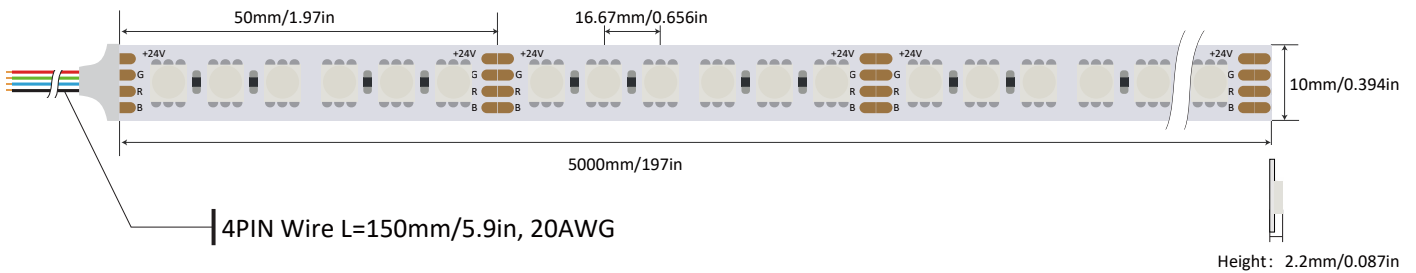
Lighting Effect

IP Rating Option



Silicone Tube Injected
Silicone Glue

Dimension(mm/inch)



Length/Reel	IP68 Width	IP68Height	LED Spacing	Min. Cutting
5000mm/197in	13mm/0.472in	5mm/0.197in	16.66mm/0.656in	Every 50mm/1.97in (6LEDs)

Note:

LED strip length tolerance is $\pm 20\text{mm}$ based on IP68.
Width tolerance is $\pm 0.5\text{mm}$.

Data

Part Number	Working Voltage	Power	Current	LED Qty	CRI
RS-RGB4040-24V-120D-10-68	24V	14.4W/m	0.6A/m	120LED/m	/
		4.39W/ft	0.183A/ft	≈37LEDs/ft	

CCT (°K)	Luminous Efficiency	lumen	Maximum Length
RGB	45lm/W	648lm/M(198lm/ft)	5M(1.524ft)

Note:

The data base on IP68A

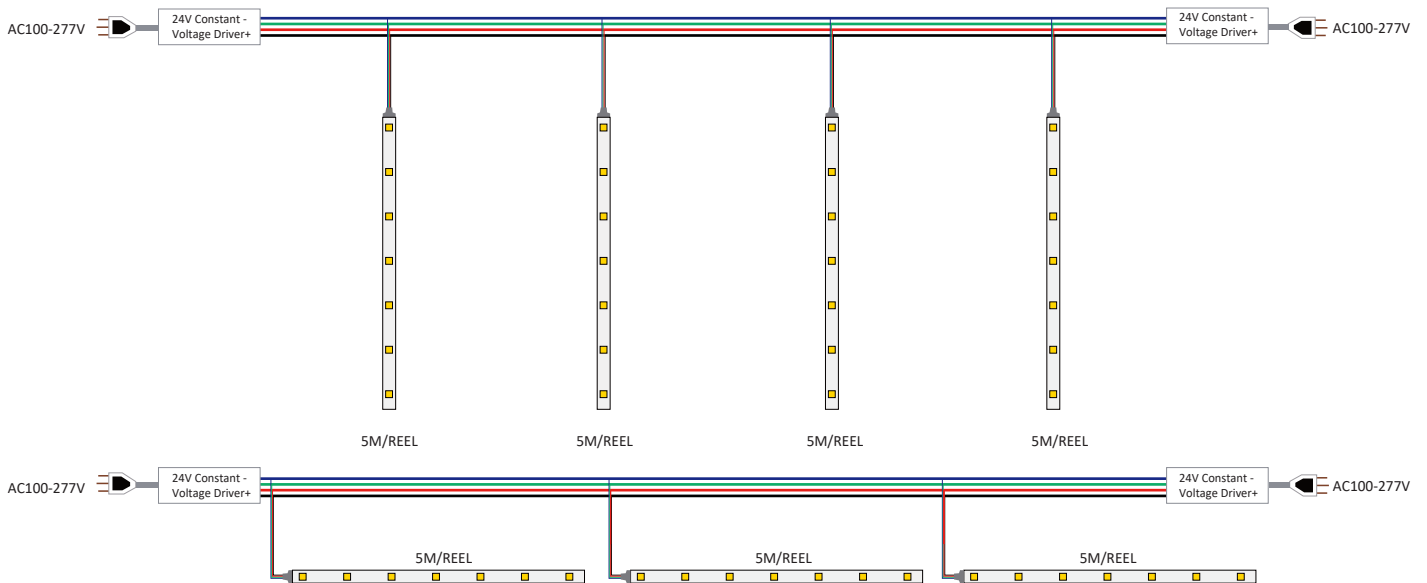
The Lumen output value tolerance $\pm 5\%$ due to testing way.

The CCT will be $\pm 150K$ tolerance.

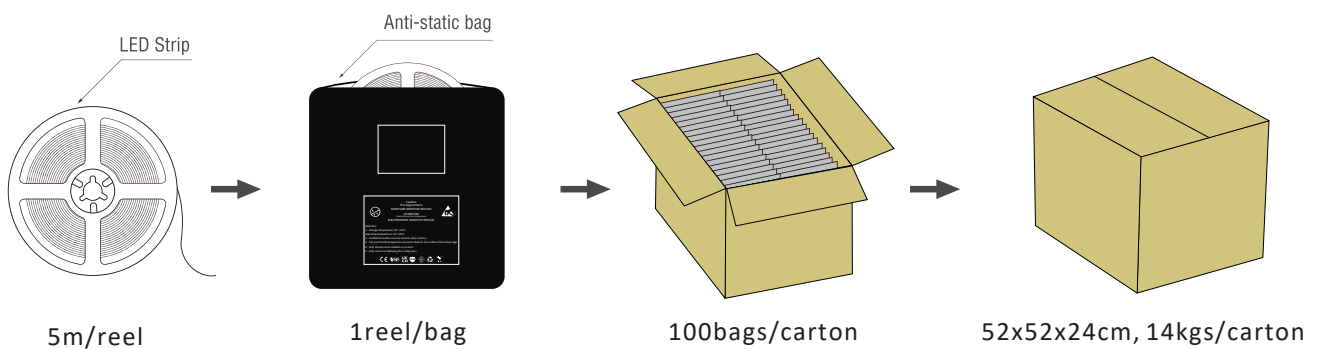
Absolute Maximum Ratings

Parameter	Symbol	Value
Thermal Measurement Point	Tc	80°C/176°F
Operating Temperature	Topr	<80°C/<176°F
Storage Temperature	Ts	-20~+ 60°C/-68~140°F
Number of FPC Connection		

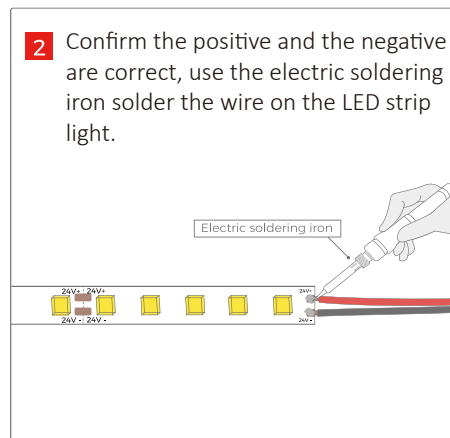
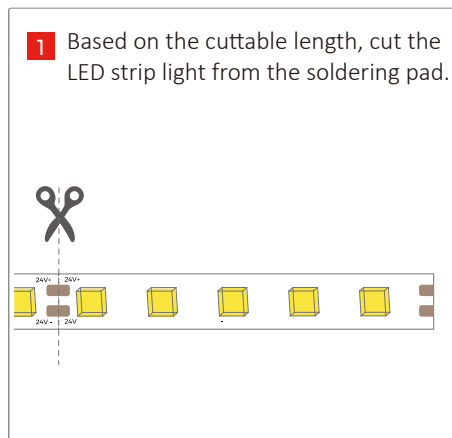
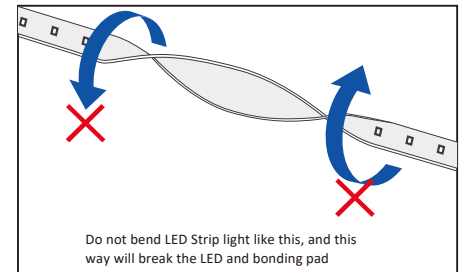
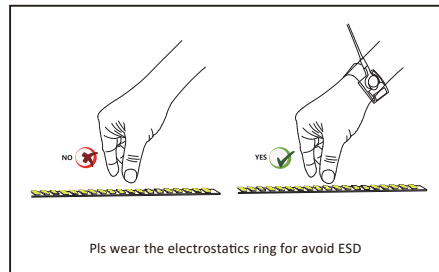
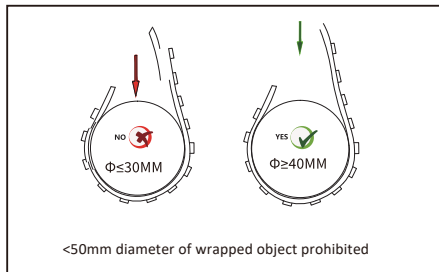
Wiring Diagram Application



Packaging



Cautions



Safety & Disclosures

1. Do not install the led strip in environment where excessive heat may occur.
2. Only use copper wiring. Use wires rated for at least 176°F(80°C) and certified for use with
3. Do not install IP20 LED strip products in outdoor / wet location environments.
4. Excessive handling, bending, and pressure may damage the product, voiding the warranty.
5. Improper wire selection and installation could overheat wires, and cause fire.
6. Do not connect directly to high voltage or AC power.
7. Installation must be in accordance with local and national electrical code regulations.
8. To ensure safety and correct installation, our strips are intended to be installed by a qualified, licensed electrician.