

Mosaico LC5M

300W IP66 with C5-M treatment zoomable LED image projector with an animation wheel and framing shutters

ORDER CODE: **MOSAICOLC5M**



The **Mosaico L** is a bright outdoor LED image projector, designed for long-range image, textures and logo projections.

Built in a durable IP66 die-cast housing and painted with a C5-M marine treatment, it is ideal for outdoor use in challenging saline environments or near the sea, the **Mosaico L** offers a phenomenal output of 11,700 lumens and an extensive set of features including a rotating animation wheel, 7 interchangeable gobos, and motorized framing shutters that precisely focus within a certain projection area. It has an exceptional zoom range, from 7° to 49°, making it versatile in both near-field and long-throw installations, or even for static and animated facade building lighting.

MAIN FEATURES

- IP66 for long-lasting installations, with minimal maintenance needed
- C5-M treatment for permanent exterior installation also in marine environment
- 7°- 49° linear zoom system, for both near and long throw installation
- 300W White LED engine (8,000K), with up to 11'700 lumen output
- Extensive feature set including 7 colour-filters on wheel, 7 interchangeable rotating gobos, animation wheel and motorized framing shutters

TECHNICAL SPECIFICATION

LIGHT SOURCE

- Source: 300W high-power white LED
- CCT: 8.000
- Luminous flux: (7°) 8'536 lm - (49°) 11'729 @Full
- Lux: (7°) 28'230 lx - (49°) 867lx @5 m full
- Source life expectancy: > 30.000 hrs (L70B10 @Ta 25° C / 77° F)

OPTICS

- Zoom range: 7°- 49° motorised linear zoom
- Lens diameter: 110mm / 4.33"
- Lens type: HD anti-reflection lenses with achromatic coating
- Focus: motorised

COLOUR SYSTEM

- Colour mixing: cold white LED with colour wheel
- Colour wheel: open + 7 colour filters

DYNAMIC EFFECTS

- Control Resolution: 16-bit dimmer
- Shutter system: 4 shutter blades with position and ±30° angle adjustment, ±45° rotation of the complete framing system
- Animation wheel: magnetic interchangeable animation wheel with CW and CCW rotation
- Rotating gobos: open + 7 rotating gobos + open, interchangeable, indexing
- Gobo size (BW): outer: 26,9 mm - image: 23 mm
- Gobo size (Color): outer: 26,9 mm - image: 20,5 mm
- FX generator: shutter macros with adjustable speed
- Circular prism: 3ff with bi-directional rotation, indexing
- Frost: linear 0 - 100% frost filter
- Special features: record scenes and create chases and shows throughout these scenes

BODY

- Body: sturdy die-cast aluminium body, scratch resistant paint (C5M as standard)
- Body colour: RAL 9006
- Other: Inspectable cover window for gobos replacement and maintenance

CONTROL

- Protocols: DMX512, RDM, CRMX
- Stand Alone: Stand Alone programmer and playback

ACCESSORIES & RELATED PRODUCTS

▪ AETHERLINK	IP67 1 Universe CRMX Wireless transceiver for exterior installation
▪ AETHERBOX TWO	Professional IP65 double universes CRMX transceiver, battery ready
▪ AETHERBOX LITE	1 Universe CRMX Wireless Transceiver
▪ AETHERBOX	IP65 1 universe CRMX transceiver, DMX and Ethernet protocols, Wi-Fi, Bluetooth and battery ready
▪ AWEXAC12ADP	Power adapter from AWEXAC1 cable series to AWEXAC2 cable series
▪ AWEXDC1221ADP	Signal adapter kit from AWEXDC1 series to AWEXDC2 series and vice versa
▪ FCLMOSAICOL	Flightcase for 2 pcs of MOSAICOL
▪ MOSBRACK	Bracket for MOSAICO series for wall mounting and suspension on poles
▪ MOSLCCW1	Optional color wheel 1 for MOSAICOL

- DMX channels: 22 / 32 / 43channel
- Wireless Control: included, LumenRadio Timo Fx DMX compatible with both CRMX (Lumen Radio) and W-DMX (Wireless DMX)
- RDM: RDM for remote monitoring and settings
- Display: Graphic User Interface
- Firmware upgrade: via DMX with UPBOXPRO/UPBOX1 (USB-DMX interface not included)

ELECTRONICS

- Dimmer: linear 0 ~ 100% electronic dimmer
- Dimmer curves: 4 selectable dimming modes available
- Strobe / shutter: 1~30 Hz, electronic
- Display battery: self-charging battery backup
- Operating temperature: -20° C / +45° C (-4° F / +113° F) Ta
- LED Control: flicker free frequency with adjustable PWM
- Selectable PWM: 600 ~ 25.000 Hz

ELECTRICAL

- Mains power supply: 100-240V - 50/60Hz
- Max power consumption: 440W
- Standby power: 58 W
- Output (at 230V): 6 units on a single power line
- Power factor: > 0,98

PHYSICAL

- IP rating: 66 for outdoor installations
- IK rating: 09
- Cooling: combination of heat pipe cooling system and low noise fan
- Suspension and fixing: bracket for hanging and positioning
- Adaptors: XLR and BARE END 16A adaptors included
- Signal connection: 1,8 m moulded IP signal IN/OUT connectors
- Data connection: W-DMX transreceiver
- Power connection: 1,8 m moulded IP power IN/OUT connectors
- Dimensions (WxHxD): 362x428x451mm / 14.25"x16.85"x17.76"
- Weight: 25kg / 55.12lbs

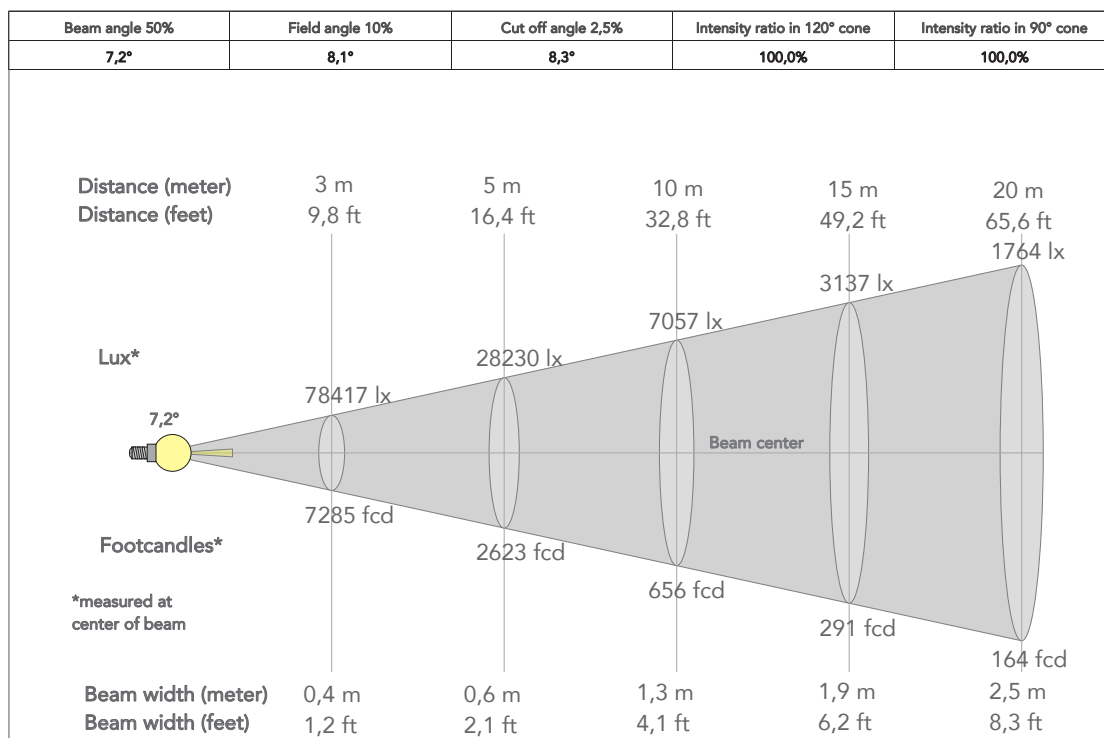
CERTIFICATIONS / APPROVALS

- Certifications / Approvals: CE, UKCA, RCM, cTUVus, FCC

▪ MOSLCCW2	Optional color wheel 2 for MOSAICOL
▪ GBVMAP001	Gobo Mapping, F size, black and white
▪ AWEXAC1L03/05/10/20	IP67 power extension cable for outdoor architectural projectors, L.03/05/10/20 m
▪ AWEXDC1L03/05/10/20	IP67 DMX extension cable for outdoor architectural projectors, L.03/05/10/20 m
▪ UPBOXPRO	Firmware uploader kit, USB IN, 5-pin XLR DMX OUT connector
▪ LRLUNA	Single Universe DMX transceiver with Bluetooth
▪ RSR1235B	Steel security cable for hanging bodies, inox steel shackle, L=120 cm, black
▪ C6002B	Slim aluminum clamp, 200kg loading, 48-51mm tubes, M10 bolt, Black

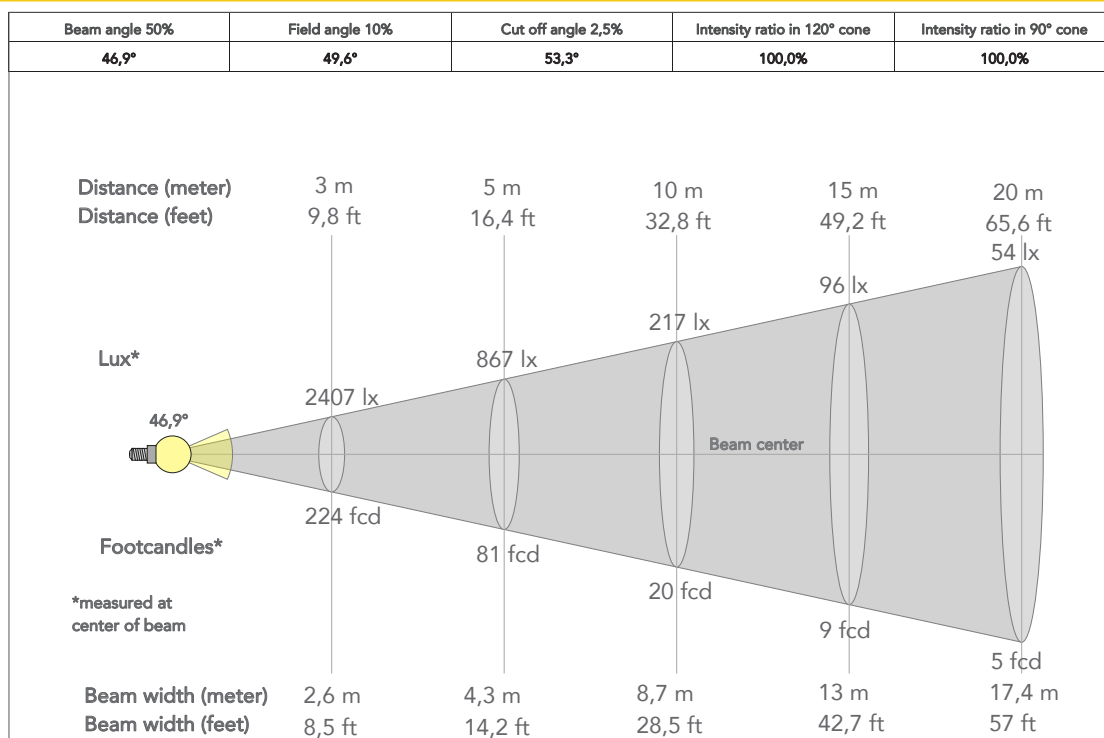
PRESET FULL ON

Beam angle 50%: 7°

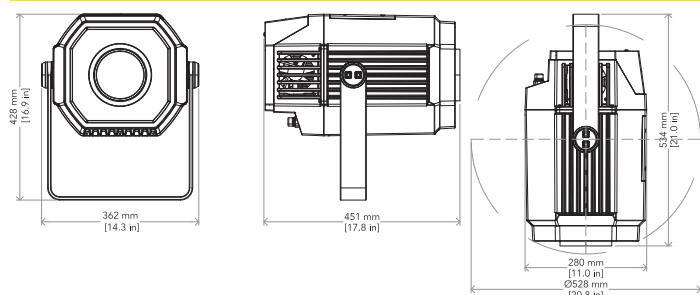


PRESET FULL ON

Beam angle 50%: 50°



TECHICAL DRAWINGS



CERTIFICATIONS / APPROVALS



Conforms to UL STD. 1573
Certified to CSA STD: C22.2 NO. 166

Visit our website
for specifications and
tech documentations

