

# Muse Profile70 CT+

1000W 6-Colours Moving LED Profile

ORDER CODE: **MUSEP70CTP**

Muse Profile70CT+ is a moving LED Profile featuring a 1000W light source with 6-color additive mixing, designed to deliver maximum light quality for theatres, TV studios, and film sets.

Its LED source uses the same 6-colors and the SpektraOs ecosystem found across the CT+ range of the premium PROLIGHTS static fixtures (Profile, Fresnel and Soft light), enabling seamless mixed setups and ensuring consistent colour space and spectral compatibility within the same production environment—while adding all the advantages of a motorized fixture.

Light quality is outstanding, with CRI up to 99, R9 up to 99 for accurate skin tones and key light, and TLCI 97 for flawless results both to the eye and on camera. SpektraOs expands advanced colour control with an ultra-wide CCT range from 2,200K to 15,000K, Tint correction, and multiple colour control modes (RGB / CMY / XY / RAW), plus emulation of Tungsten and a wide selection of filter gels. An additional physical colour wheel reproduces colours outside the native gamut (such as Congo Blue) and providing higher transmission on ultra-saturated colours.

Muse Profile70CT+ is built for maximum versatility on large stages, delivering an outstanding output of >21,000 lumens and a wide 6°-50° zoom range. Its onboard effects package is complete, including two rotating gobo wheels, a 4-blade framing system (full curtain), animation wheel, linear frost, motorized iris, and absolute P/T encoder (repositioning without reset).

Silent operation and smooth, flicker-free dimming, combined with a compact form factor and a weight of just 34kg, make Muse Profile70CT+ a unique blend of power, light quality, and great form factor for large-scale productions.

## MAIN FEATURES

- 1000W 6-colour LED source with additive mixing, delivering >21,000 lm
- Outstanding colour rendering: CRI up to 99, R9 up to 99, TLCI 97
- SpektraOs ecosystem with ultra-wide CCT 2,200K-15,000K, Tint correction, and advanced control modes (RGB / CMY / XY / RAW / Gel & Tungsten Emulation)
- Full effects package: physical colours wheel, 2 rotating gobo wheels, 4-blade framing system (full curtain), animation wheel, linear frost, motorized iris, absolute encoders

## TECHNICAL SPECIFICATION

### LIGHT SOURCE

- Source: 1000W 6 colour LEDs source with adjustable high color rendering
- Luminous flux: (5,9°) 14'001 lm - (49,7°) 21'257 lm @Full
- Lux: (5,9°) 64'433 lx - (49,7°) 1'556 lx @5 m full
- CRI: 98,8 @3.200K; 97,2 @5.600K
- R9: 97,1 @3.200K; 96,4 @5.600K
- TLCI: 93 @3.200K; 97 @5.600K
- TM30 Rf: 95 @3.200K; 94 @5.600K
- TM30 Rg: 100 @3.200K; 101 @5.600K
- Source life expectancy: > 40.000 hrs (L70B10 @Ta 25° C / 77° F)

### OPTICS

- Zoom range: 5,9°- 49,7° motorised linear zoom
- Lens diameter: 150mm / 5.91"
- Lens type: HD anti-reflection lenses with achromatic coating
- Focus: motorised

### COLOUR SYSTEM

- Spektra OS: unmatched color precision and consistency
- Colour control: XY, CCT, RGB, CMY, Gel Filters
- CCT: CCT control range from 2.200K to 15.000K, + / - green correction, tungsten emulation
- White presets: 2.700K - 6.500K
- Colour wheel: open+5 colour filters

### DYNAMIC EFFECTS

- Control Resolution: 16-bit dimmer, colours
- Shutter system: 4 shutter blades with position and ±35° angle adjustment, ±60° rotation of the complete framing system
- Animation wheel: animation wheel with CW and CCW rotation
- Rotating gobos: 6 rotating gobos + open, interchangeable, indexing
- Gobo size: outer: 26,9 mm - image: 20 mm - thickness: up to 3 mm
- Rotating gobos: 6 rotating gobos + open, interchangeable, indexing
- Gobo size: outer: 26,9 mm - image: 20 mm - thickness: up to 3 mm
- Circular prism: 4f with bi-directional rotation, indexing
- Frost: linear 0-100% from soft-edge to heavy diffusion
- Iris: 5 - 100% motorised iris

### BODY

- Hardware on-board: ancor points on the front for accessory mounting
- Pan range: 540°
- Tilt range: 270°
- Pan/Tilt resolution: bit 16-bit
- Feedback: automatic repositioning after accidental movement
- Body: Aluminium structure with high-resistance polycarbonate cover
- Body colour: black

- Other: Handle on the top of the arm for easy transportation

### CONTROL

- Protocols: DMX512, RDM, ArtNet, sACN, CRMX
- DMX channels: 43 / 48 / 49 / 53channel
- Wireless Control: Included LumenRadio Timo Fx DMX/RDM receiver compatible with CRMX (Lumen Radio) and W-DMX (Wireless DMX)
- RDM: RDM for remote monitoring and settings
- Display: 2.4" Color display
- Firmware upgrade: via DMX with UPBOXPRO (USB-DMX interface not included) or via Ethernet (Art-Net with DMX-Workshop)
- EtherFlow: Ethernet pass-through switch that preserves network connectivity even when the fixture is unpowered.

### ELECTRONICS

- Dimmer: linear 0 ~ 100% electronic dimmer
- Dimmer curves: 5 selectable dimming modes available
- Strobe / shutter: 1-30 Hz, electronic
- Display battery: self-charging battery backup
- Operating temperature: -10° ~ +45° Ta
- Selectable PWM: 600 ~ 50.000 Hz

### ELECTRICAL

- Mains power supply: 100-240V - 50/60Hz
- Max power consumption: 1300W
- Standby power: 154,5 W
- Power factor: > 0.95

### PHYSICAL

- IP rating: IP20
- Cooling: combination of heat pipe cooling system and low noise fan
- Suspension and fixing: any position with quick-lock omega brackets
- Pan / tilt lock: for transportation and maintenance
- Signal connection: Amphenol XLR 5p IN/OUT connectors
- Data connection: Amphenol RJ45 IN/OUT
- Power connection: Neutrik powerCON TRUE1 IN connector
- Dimensions (WxHxD): 416 x 730 x 331mm / 16.38"x28.74"x13.03"
- Weight: 34kg / 74.96lbs

### CERTIFICATIONS / APPROVALS

- Certifications / Approvals: CE

### BOX CONTENT

- 1 x MUSEP70CTP
- 2 x OS25PLUS
- 1 x 1,5 meters 3G1,5mmq power cable (BARE END - NEUTRIK POWERCON TRUE1 IP65)
- User Manual

ACCESSORIES & RELATED PRODUCTS

- FCLMUSEP70
  - MP70FF
  - OS25PLUS
  - AETHERBOXONE
  - AETHERBOX

Flight case for 2 pcs of MUSEP70CTP

Holder and filter frame for MUSEP70CTP

Quick-lock omega bracket, M12 hole

IP65 1x universe CRMX transceiver, DMX, Ethernet protocols, Wi-Fi, Bluetooth, battery-ready and PO

IP65 1 universe CRMX transceiver, DMX and Ethernet protocols, Wi-Fi, Bluetooth and battery ready
- C6002B
  - RSR1235A
  - UPBOXPRO

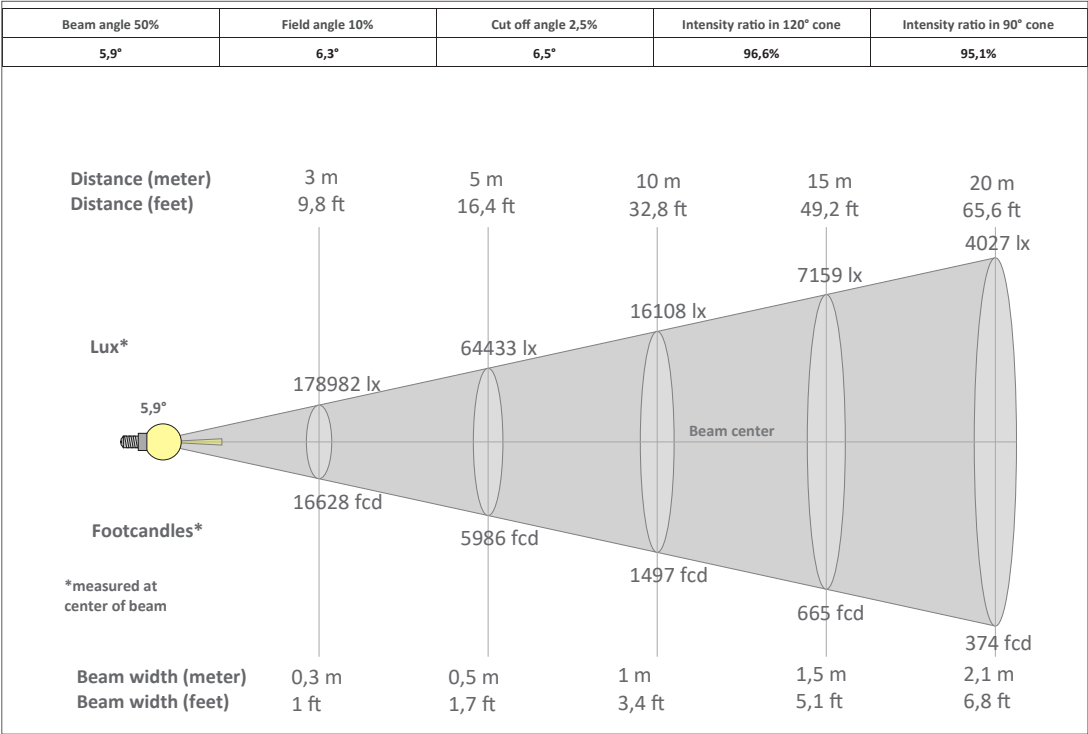
Slim aluminum clamp, 200kg loading, 48-51mm tubes, M10 bolt, Black

Steel security cable for hanging bodies, inox steel shackle, L=120 cm, silver

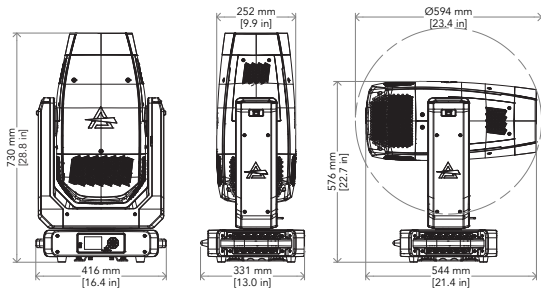
Firmware uploader kit, USB IN, 5-pin XLR DMX OUT connector

PRESET FULL ON

Beam angle 50%: 5,9°



TECHICAL DRAWINGS



Visit our website  
for specifications and  
tech documentations

