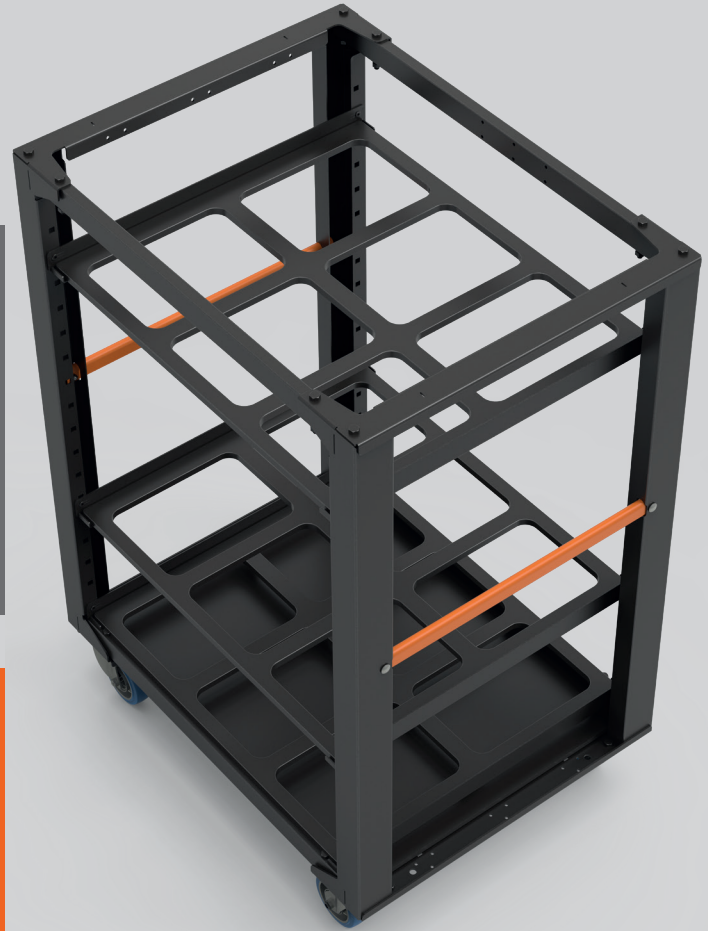
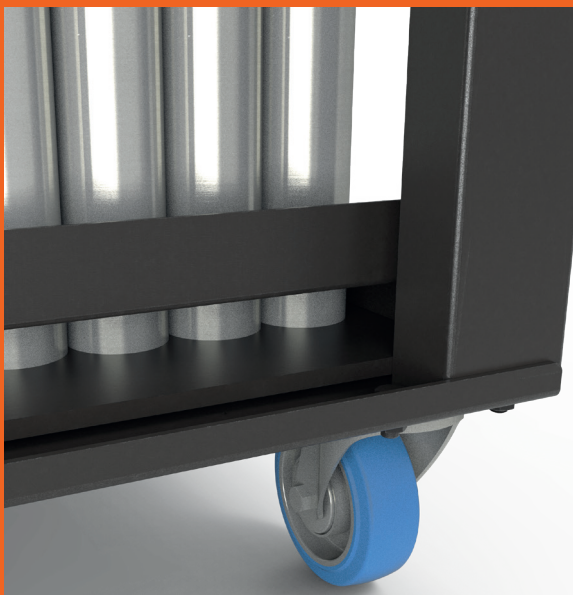




ADMIRAL
STAGING

STAGE LEG CART

The Stage leg cart provides an organised and flexible solution for storing and transporting stage legs. Featuring adjustable organiser plates that can accommodate different leg lengths, the cart keeps stage legs clearly organised, accessible and ready for use.



KEY FEATURES

Adjustable organiser system

Organiser plates can be positioned at different heights and additional plates can be added to accommodate both short and long stage legs.

Organised leg storage

Six separate compartments per support plate keep stage legs organised by length, allowing crews to quickly identify and select the correct legs.

Modular Transport System

Built using Slim-line panels, length profiles and drawer profiles from the Admiral Modular Transport System for maximum flexibility and durability.

www.admiralstaging.com



TECHNICAL DATA

1 ADD FRAME

Stage leg cart frame

Article code:	WAM2SB05
Dimensions (L x W x H) including castors:	600 x 792 x 1141mm
Weight:	40.34 kg

Set includes:*,**

2 x Slim-line panels with handle

Article code:	WAM2P72
EAN code:	8720094423272
Dimensions (W x H) :	600 x 981 mm
Material:	steel
Weight:	9.09 kg
Colour:	black gloss 30% (RAL 9005) / orange gloss 30% (RAL 2008)
Finish:	powder coated

Length profiles set of 4

Article code:	WALPSL080
EAN code:	8720094427744
Dimensions (L x W x H):	773 x 20 x 40 mm
Material:	steel
Weight:	4.50 kg
Colour:	black gloss 30% (RAL 9005)
Finish:	powder coated
Bolt type:	M8

Stage leg cart bottom plate

Article code:	WAM2SA68
EAN code:	8720094429809
Length:	710 mm
Thickness:	11.5 mm
Width:	545 mm
Material:	physiochemical board / rubber
Weight:	8.72 kg
Colour:	black

2 x Stage leg cart organiser plate

Article code:	WAM2SA69
EAN code:	8720094429793
Length:	667 mm
Thickness:	12 mm
Width:	568 mm
Material:	physiochemical board
Weight:	2.22 kg
Colour:	black

2 x Drawer profile MK2 set of 2

Article code:	WAM2R06
EAN code:	8720094423241
Dimensions (L x W x H):	587 x 34 x 38 mm
Material:	steel
Weight:	1.99 kg
Colour:	black gloss 30% (RAL 9005)
Finish:	powder coated
Bolt type:	M6
Included:	2 drawer profiles, 4 bolts, 4 nuts

* bolt set included

** set is delivered in parts

2 CHOOSE CASTORS

Castors set of 4

Sets available:	2 x Swivel with brake 2 x Swivel no brake	4 x Swivel with brake		
Article code:	WACS100B	WACS125B	WACS100A	WACS125A
Max load*:	200 kg per castor	220 kg per castor	200 kg per castor	220 kg per castor
Diameter mm:	Ø 100	Ø 125	Ø 100	Ø 125
Castor:	swivel			
Braked:	2 x yes 2 x no	2 x yes 2 x no	yes	yes
Material:	rubber / steel			
Weight:	3.28 kg	4.08 kg	3.68 kg	4.45 kg
Colour:	blue / silver			
Finish:	hot-dip galvanized			
Bolt type:	M8	M10	M8	M10
Standards & Approvals:	• part/clauses of the following technical regulations, standards and information papers have been used: EN 12532			

*the Max load is determined according to the applicable standards and guidelines.

ADD AN ADDITIONAL ORGANISER PLATE

Stage leg cart organiser plate

Article code:	WAM2SA69
EAN code:	8720094429793

* an additional organiser plate can be purchased separately and mounted in the Stage leg cart using a Drawer profile set.



Drawer profile MK2 set of 2

Article code:	WAM2R06
EAN code:	8720094423241

