



ChamSys

Inspiring Performance

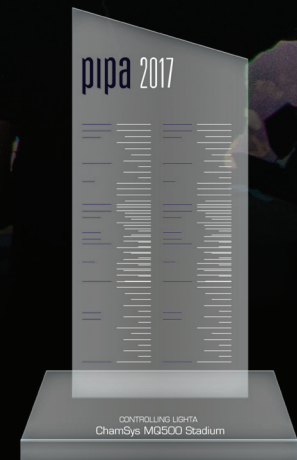
MagicQ

MAGICQ STADIUM

The award-winning MagicQ Stadium range operates
at the highest level of show control.

Greatness Awaits Reach for it.

MagicQ MQ500 Stadium
2017 Prolight + Sound
International Press Award





100-601 - MagicQ MQ500 Stadium Console 64 Universes
100-602 - MagicQ MQ500 Stadium Console 200 Universes

MagicQ MQ500 Stadium Console

The MagicQ MQ500 Stadium supports up to 200 universes direct from the console without the need for external processing. MagicQ MQ500 Stadium is designed for high performance and complex shows. Its features allow shows to be designed from concept to reality. That includes lighting, media, and LEDs. You can even generate light plots.

MQ500 Stadium features dual multi touch 15" displays in full HD with adjustable viewing angle and gesture support. It has the largest number of playbacks in the ChamSys family, with 42 playbacks made up of both fader and executor playbacks for live busking. This includes 15 full faders, 15 executable playbacks, and a dedicated section of 12 multipurpose Macro/Execute/Playbacks/Palette keys. For additional control, connect a MagicQ Stadium Wing to get even more playbacks and another touchscreen display as well.

The MQ500 Stadium has inbuilt MagicVis 3D visualiser with high quality beam and gobo rendering. This means you can preprogram a new song, create new effects offline, and save time onsite.

The MQ500 Stadium has 4 built-in DMX ports and an inbuilt 4 port Ethernet switch.

This versatile console also includes an intensity wheel and 100mm split crossfaders for theatre control.

	Universes: 64 or 200	Channels: 102,400 (32,768 standard)	Number of fixtures: Up to 102,400 (32,768 standard)
	Cues: 5000	Cue stacks: 2000	Palettes: 4096
	Groups: 5000	Numbers of shows: Virtually unlimited	Encoders: 8
	Faders: 18	Direct DMX ports: 4	Network ports: 4
	External Monitor: Up to 1920x1200 - DVI-D	USB ports: 5 (including 1 on front panel for easy access)	Audio input (1 channel, 7 band)
	MIDI Notes in/out	LTC in/out	Inbuilt UPS
	Dual Colour Desk Lamp	Illuminated soft buttons	Dust cover
	Power Input: 110 to 240 VAC	Width: 860mm (37")	Depth: 587mm (26.4")
	Height: 85mm (3.3") (high at front, 188mm (7.4") high at rear (screens stored)	Weight: 28kg (61.7lb)	Weight (console in flightcase): 50kg (110lb)



100-430 MagicQ Stadium Wing

MagicQ Stadium Wing

The MagicQ Stadium Wing is the latest, most advanced ChamSys wing designed to operate at the highest level of show control, built to work in tandem with the MagicQ MQ500 Stadium console or MQ80 Compact console.

The MagicQ Stadium Wing is packed with useful technology to enhance the show programming and playback process. It features 30 Playbacks which are separately pageable as 15 Fader Playbacks and 15 Execute Playbacks. All Playbacks feature full electronic legending on screen.

It also has 4 Encoders which are multi purpose. They can be assigned functions from the Execute and other MagicQ windows to enhance playback performance.

The Wing incorporates a full HD multi touch display with adjustable viewing angle and gesture support. The display connects directly to the video output from a MagicQ MQ500 or from a MagicQ MQ80. Any MagicQ window can be transferred to the display on the Stadium Wing.

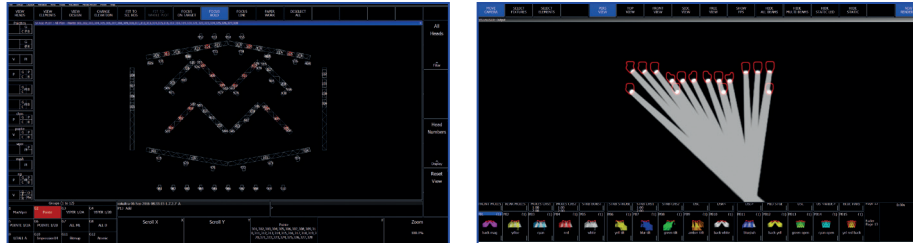
In addition to all the human/machine interface tools it provides, the MagicQ Stadium Wing also facilitates communication between the console and the lighting rig. It includes 4 DMX outputs, which expand the number options on how to connect all the lights to the console. It also has an inbuilt UPS for added reliability.

The MagicQ Stadium Wing connects to the MagicQ console via a locking Neutrik USB cable.

	Inbuilt 15" display	110 to 240 VAC input via powercon	Power input: 110 to 240 VAC
	Full HD 1920x1080 resolution	Inbuilt UPS	4 DMX ports
	1 Neutrik locking USB for connection to console	Encoders: 4	Faders: 15
	Executes: 15	Direct DMX ports: 4	Connect to MagicQ Stadium MQ500 console
	Connect to MagicQ MQ80 Compact console	Connect to Windows PC running MagicQ	Multi touch with gesture support
	Modular design for easier maintenance	Comfortable arm rest	Dual Colour Desk lamp
	Illuminated soft buttons	Dust cover	Width: 471mm (18.5")
	Depth: 587mm (23.1")	Height: 85mm (3.3") high at front, 188mm (7.4") high at rear	Weight: 13kg (28.7lb)

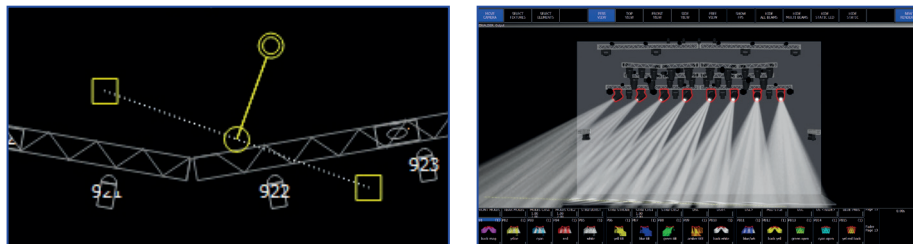
Focus Hold

Focus Hold enables focusing of moving fixtures direct from the Plot view onto a single point, massively reducing the time taken to create position focuses and enabling easy live tracking of artists' position.



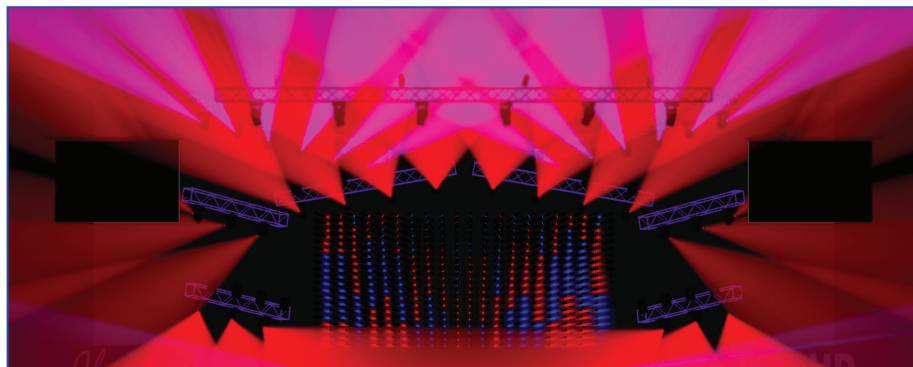
Focus Line

Focus Line enables even more powerful looks to be created by automatically aligning selected fixtures to a flexible line on the plot adjustable in position, orientation, and length - this, for example, enables a group of lights to be fanned across the complete downstage edge at the touch of a button, regardless of the physical orientation of the fixtures in the rig.



Visualisation

MagicQ Stadium consoles have in-built MagicVis 3D visualiser with high quality beam and gobo rendering.



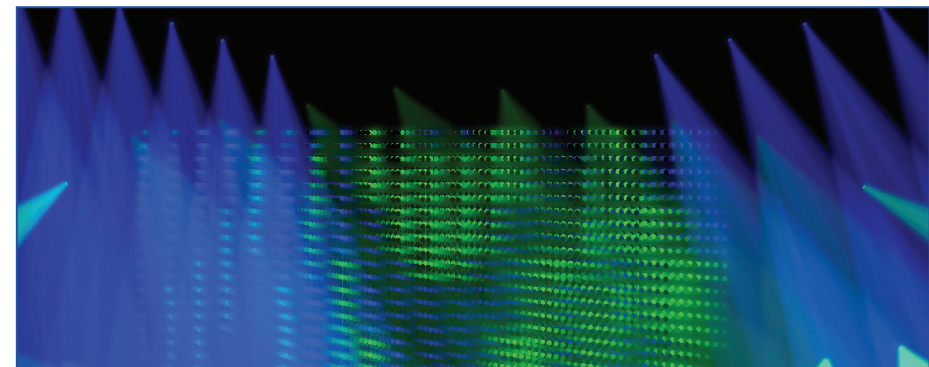
Compatibility

ChamSys believes that it is important for Lighting Designers to be able to move between different MagicQ consoles and different MagicQ software versions, without having complicated import and export procedures.



Pixel Mapping

MagicQ Stadium consoles enable 3D pixel mapping direct from console.





MAGICQ COMPACT

MagicQ Compact range features small and lightweight consoles designed specifically for traveling lighting designers.

Compact Impact



100-080 MagicQ MQ80 Compact Console

MagicQ MQ80 Compact Console

The MagicQ MQ80 is an extremely powerful console in a small size, supporting 48 universes direct from the console, but still fits within checked luggage restrictions.

It has a large 12" central touch screen which provides easy access to all MagicQ features. The high resolution display can display screens such as plot window where fixtures can be selected and focused graphically.

MagicQ MQ80 features the same software found in all MagicQ consoles and uses the same show formats, enabling compatibility between all MagicQ products. MagicQ MQ80 can be connected over network to a PC or Mac running the free ChamSys free MagicVis lighting visualisation software running or MagicHD media player software (for output of up to 8 layers of HD media) at no extra cost.

The construction of the MagicQ MQ80 incorporates high reliability components, including durable metal Neutrik locking connectors. As with other MagicQ consoles, the in-built 4 port Ethernet switch is protected by the UPS, thus ensuring that both the console and the network switch maintain operation even during a power loss.

The console features an in-built power supply and UPS that is compatible with voltages from all over the world and a Kensington security slot for securing the product. Both soft bags and flight cases are available as optional extras.

Universes: 48	Channels: 24,576	Number of fixtures: Up to 24,576
Cues: 5000	Cue stacks: 2000	Palettes: 4096
Groups: 5000	Numbers of shows: Virtually unlimited	Direct DMX ports: 4
Network ports: 4	External monitor: Up to 1920x1200	Internal monitor resolution: 1280x800
USB ports: 6 (including 1 on front panel for easy access)	Audio input (1 channel, 7 band)	MIDI Notes + Timecode in/out
LTC input	Inbuilt UPS	1 Dual Colour Dimmable LED Console Lamp
Encoders: 8	Faders: 13	Illuminated soft buttons
Dust cover	Power input: 110 to 240 VAC	Width: 570mm (22.5")
Depth: 405mm (15.9")	Height: 110mm (4.3")	Weight: 8kg (17.5lb)



100-075 - MagicQ MQ70 Compact Console

MagicQ MQ70 Compact Console

MagicQ MQ70 is the latest offering in the Compact Console range of small and lightweight consoles that you can fly with. The MagicQ MQ70 fits within hand luggage carry on restrictions of all the major budget airlines including, Southwest, Easyjet and Ryanair. The console features a 10.1" Multi touch display, with illuminated encoder and fader tracks.

The console supports 24 universes with an option to expand to 48. The console has 3 network ports enabling ArtNet and sACN direct from the console, whilst also having 4 assignable physical DMX ports. This feature packed console also includes WIFI inbuilt to the console for quick connection to ChamSys MagicQ Remote focus application without the need for external networking hardware.

The MQ70 features an inbuilt UPS which protects both the console and the Ethernet switch in case of power fail. It has low power consumption and does not require a cooling fan - enabling silent operation making it the ideal choice for touring shows, broadcast, theatrical and corporate shows. With built in MIDI input and output, and an audio input for synchronization, the MagicQ MQ70 provides many options for integration with show control and audio systems.

The MagicQ MQ70 runs the same MagicQ software as other MagicQ consoles, meaning that shows programmed on it can be loaded and ran on any other MagicQ console (within the universe limits). Likewise, files created on one of the other models can be saved and played back on the MQ70. This scalability is one of the core design principles for all of ChamSys lighting controllers. Show files are forward and backward compatible across software release versions and new features are regularly added to the software.

Universes supported: 24 Expandable to 48	Channels: 12288 Expandable to 24576	Number of fixtures: Up to 12288 Expandable to 24576
Cues: 5000	Groups: 5000	Display: 10.1"
Touch Screen: Multi touch	DMX 5-Pin XLR: 4	Faders: 12
Attribute encoders: 8	Network ports: 3	Inbuilt WIFI: Yes
USB ports: 5	Audio in: Yes	Audio out: Yes
MIDI: Notes, TC, Show Control	LTC in/out: Yes	Remote input port: Yes
Illuminated faders: Yes	Illuminated encoders: Yes	Wing Support: Yes
Multi console: Yes	1 Dual Colour Dimmable LED Console Lamp	UPS: Yes
Width: 525mm (20.6")	Depth: 350mm (13.7")	Height: 60mm (2.3")
Weight: 7kg (15.4lb)		



100-055 MagicQ MQ50 Compact Console

MagicQ MQ50 Compact Console

MagicQ MQ50 is part of the new generation of compact consoles, ideal for small to medium sized venues. The MQ50 features a 10.1" Multi touch display, while also being carry-on luggage compliant for all major budget airlines.

The console supports 6 universes direct from the console, with 4 assignable physical DMX outputs and a network port for ArtNet and sACN output. This feature packed console also includes WIFI inbuilt to the console for quick and easy connection to ChamSys MagicQ Remote focus application without the need for external networking hardware or any networking knowledge.

MagicQ MQ50 is simple and easy to use for installations, clubs and schools while still featuring advanced features such as MagicVis and MagicHD connectivity. It uses the same software and show formats, enabling compatibility between all products in the MagicQ range.

Universes supported: 6	Channels: 3072	Number of fixtures: Up to 3072
Cues: 5000	Groups: 5000	Display: 10.1"
Touch Screen: Multi touch	DMX 5-Pin XLR: 4	Faders: 12
Attribute encoders: 8	Network ports: 1	Inbuilt WIFI: Yes
USB ports: 5	Audio in: Yes	Audio out: Yes
MIDI: Midi Notes Support	Multi console: Yes	Wing Support: Yes
1 Dual Colour Dimmable LED Console Lamp	Width: 525mm (20.6")	Depth: 350mm (13.7")
Height: 60mm (2.3")	Weight: 7kg (15.4lb)	



200-015 MagicQ PC Wing Compact

MagicQ PC Wing Compact

The MagicQ PC Wing Compact is a powerful USB control wing for connecting to your PC or Mac to control lighting, video, and LED with the MagicQ PC software. MagicQ PC software runs under Windows, Linux, or OSX.

Small enough to fit within hand-luggage restrictions, the powerful MagicQ PC Wing Compact is packed with features. It has 2 built-in DMX512 outputs, and can output up to 64 universes (via Ethernet) without the need for additional licenses or dongles. The design of the MagicQ PC Wing Compact provides quick access to fixture parameters via the 8 rotary encoders, as well as live show control through the 10 playback faders and cue stack control buttons.

The MagicQ PC Wing is ideal for use by touring Lighting Designers, or for installing into theatres, clubs, and venues. This affordable solution allows you to create a powerful lighting console with the addition of a personal computer.

MagicQ software includes the free MagicVis visualizer enabling simple visualization of all 64 universes of lighting control. MagicQ software also includes the free MagicHD media player enabling playback of up to 8 layers of HD media through your PCs, or Macs, 2nd monitor port.

Universes: 64	Channels: 32768	Number of fixtures: Up to 32768
Cues: 5000	Cue Stacks: 2000	Palettes: 3096
Groups: 5000	Direct DMX512 ports: 2	USB ports: 5 (4 output, one input)
Audio input: 1 channel (3.5mm jack)	1 Dual Colour Dimmable LED Console Lamp	Remote trigger input: 1
Security lock fixing: 1	In-built Power Supply: 110 to 240 VAC	Encoders: 8
Playbacks: 10	Executable Buttons: Up to 20	Height (to encoders): 88mm (3.3")
Weight: 3.6kg (7.9lb)	Width: 515mm (20.2")	Depth: 257mm (10.1")
Height (to back): 84mm (3.3")		



100-420 MagicQ Extra Wing Compact

MagicQ Extra Wing Compact

The Extra Wing Compact is designed to allow users of MagicQ to extend the number of physical playbacks available to them. It has a total of 24 playbacks, made up of 12 fader and 12 executable playbacks.

Each section of playbacks can page through multiple playbacks via its own Next and Previous page buttons. The 12 playback faders feature Flash, Go, and Select buttons, while the other 12 are more space-saving, employing a Select and Execute button for each playback. All playbacks feature LCD displays for playback legending directly above each playback.

The Extra Wing Compact is a modular expansion device for the ChamSys MagicQ systems. It features an internal USB hub which enables multiple Extra Wings to be connected together. Other rear panel connections include a locking Neutrik Powercon connector, a USB socket for connection to the main MagicQ system, and a working light socket.

LCD Displays: 6	Fader Playbacks: 12	Executor Playbacks: 12
1 Dual Colour Dimmable LED Console Lamp	Power Supply: 110 to 240 VAC	Width: 515mm (20.3")
Depth: 257mm (10.1")	Height (to back): 84mm (3.3")	Height (to faders): 88mm (3.4")
Weight: 3.6kg (7.9lb)		



200-003 MagicQ Mini Wing

MagicQ Mini Wing

The MagicQ Mini Wing is a lightweight and portable USB control wing that allows the user to have physical playback control over their show. The Mini Wing is compatible with Windows, OSX or Linux computers, coupled with the powerful MagicQ software.

Working through USB connection for power and data, the Mini Wing turns your computer that is running the MagicQ software into a powerful engine for control lighting, video, and LEDs. The software is free with the Mini Wing's single DMX output port, and with 64 universes enabled for output over Ethernet, even large show can be realised with a small amount of space and a modest investment of computer equipment.

The MagicQ Mini Wing provides a powerful PC based wing solution, ideal for theatres, clubs, and venue installations. It also provides a cost-effective backup solution for customers who have larger MagicQ consoles, controlling lighting, video and LEDs. It combines the power of the MagicQ software with real faders and button.

	Universes: 64	Channels: 32768	Number of fixtures: Up to 32768
	Cues: 5000	Cue Stacks: 2000	Palettes: 3096
	Groups: 5000	Direct DMX512 ports: 1	Power Supply: USB powered
	Width: 260mm (10.2")	Depth: 184mm (7.2")	Height: 50mm (1.9")
	Weight: 2kg (4.4lb)	Faders: 11	Buttons: 35
	Security lock fixing: 1		

MagicQ Compact Console

Feature Set

	MQ80	MQ70	MQ50
Universes	48	24	6
Network ports	4	3	1
USB ports	6	5	5
UPS	Yes	Yes	No
Ext monitor	1 (can be touch)	1 (can be touch)	1
Audio input	Yes	Yes	Yes
Remote input	Yes	Yes	Yes
MIDI notes support	Yes	Yes	Yes
Timecode support	Yes	Yes	No
Connection to MagicQ USB Wings & Interfaces	Extra Wing Compact	Extra Wing Compact	Extra Wing Compact
Pixel Mapping	Yes	Yes	Yes
Media Servers	50	50	50 (within channel count)
ArtNet, ACN, Pathport output via network	Yes	Yes	Yes
Net connection to MagicVis, MagicHD	Yes	Yes	Yes
Multi Windows via network	Yes	Yes	Yes
Remote control via iOS/Android app	Yes (user WiFi router)	Yes	Yes
Net connection to 3rd party media servers	Yes	Yes	Yes
Multi Console support	Yes	Yes	Yes
ChamSys Ethernet Remote Protocol	Yes	Yes	Yes
ChamNet control	Yes	Yes	Yes

For complete specifications, visit chamsyslighting.com. Specifications are subject to change without notice.

MagicQ software offers powerful lighting control with loads of features such as a full lighting visualisation, pixel mapping, and HD media playback.



MagicQ Software (Free)

Contemporary lighting fixtures are complex objects, often with a great many moving parts. A console that has to control all these parameters needs more than just a lot of power. It needs to have clever labor-saving techniques that make the programmer's job easier and makes a successful show more repeatable. MagicQ software rises to the occasion offering powerful lighting control on up to 64 universes with loads of features that lighting designers have come to rely on, such as full lighting visualisation, pixel mapping, and HD media playback on up to 8 different layers, all integrated smoothly to streamline workflows, save time, and shorten learning curves on even the most complex lighting systems.

Download for FREE at chamsyslighting.com/products/magicq



Windows



Mac Intel



Ubuntu (64bit)

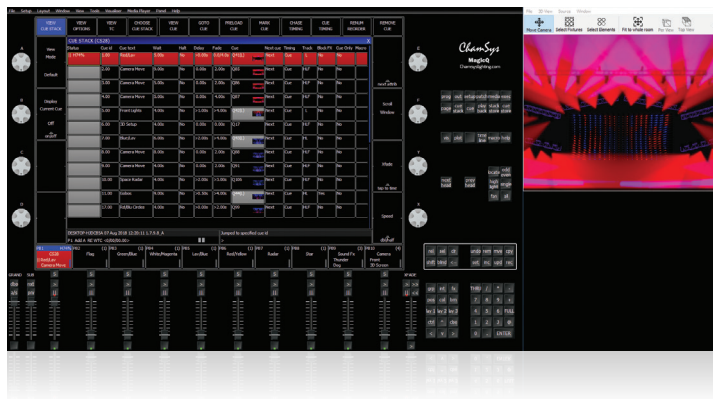


Stadium, Compact Pro2014



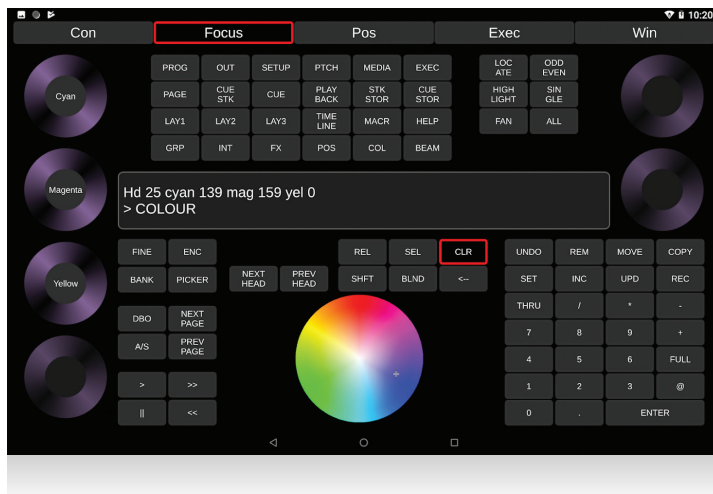
MagicHD Media Player

MagicHD is a powerful Media Player that offers up to 8 layers of media playback. MagicHD has been designed to make programming and operating of combined lighting and media shows simple and easy.



MagicVis Visualisation

MagicVis is a powerful visualisation system fully integrated with ChamSys free MagicQ software to enable lighting designers to pre-visualise their shows, to program blind, and to generate rigging paperwork, including plots and patch lists.



MagicQ Remote

MagicQ software includes in-built support for use with the FREE MagicQ Remote apps, which can be used on iOS and Android phones and tablets. The FREE remote app are available on the Apple App Store and Google Play Store. The apps allow remote focus, control and playback of MagicQ consoles and PC Wings.





MagicDMX

MagicDMX is a low cost, single universe USB DMX interface, compatible with MagicQ running under Windows, Mac, or Linux computers.

It doesn't use any special drivers for the device, so you can just plug and play. MagicDMX defaults to outputting on Universe 1 from the MagicQ software, but can test any universe.

Available to purchase exclusively at magicdmx.com

MagicDMX Full Test Kit

The MagicDMX Full Test Kit is a complete DMX test kit including a MagicDMX Full interface together with XLR adapters and MagicQ USB sticks in a handy ChamSys zip bag.

MagicDMX Full is not time limited and can be used continuously. The adapters enable DMX output on 5 pin XLR or 3 pin XLR and DMX input on 5 pin XLR or 3 pin XLR. The MagicQ USB Sticks have been proven to work with all current MagicQ consoles.

Kit includes:

- MagicQ DMX Full with 5 pin female XLR
- 5 pin male XLR to 5 pin male XLR
- 5 pin male XLR to 3 pin female XLR
- 3 pin male XLR to 5 pin female XLR
- Two MagicQ USB sticks
- Handy ChamSys zip bag



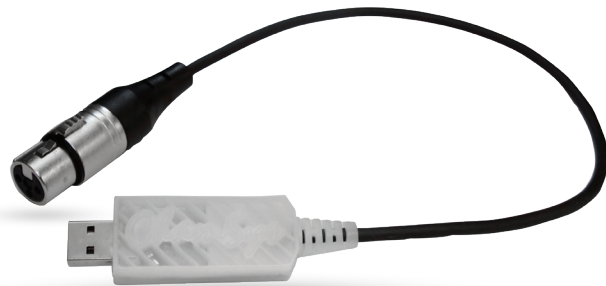
MagicDMX Basic

The MagicDMX Basic interface is aimed at users wishing to evaluate and learn MagicQ, technicians wishing to test fixtures, as well as students wishing to learn lighting in schools and colleges. MagicDMX Basic supports output of a full DMX universe via a 3 pin female XLR connector.

MagicDMX Basic is time limited to 5 hours continuous usage. After this time, it is necessary to replug the device and to restart the MagicQ software.

Features:

- USB connector
- Single DMX output - 3 pin
- Max session 5 hrs
- Basic electrical protection
- LED status indicator
- Does not unlock 'demo mode'



MagicDMX Full

The MagicDMX Full interface is aimed at Professional users wishing to have uninterrupted DMX lighting control for shows and installations. The MagicDMX Full provides a great lighting troubleshooting system.

It can be configured to either output or input a single universe of DMX, but unlike the MagicDMX Basic interface, MagicDMX Full is not time limited and can be used continuously. MagicDMX Full outputs DMX via a 5 pin female XLR connector. If you want to use the MagicDMX interface in DMX input mode, a gender reverser is required.

Features:

- USB connector.
- Single DMX output or input - 5 pin
(input requires separately sold gender reversing adapter)
- No time restrictions
- Basic electrical protection
- LED status indicator
- Does not unlock 'demo mode'



300-004 MagicQ Two Universe DMX Interface

MagicQ Two Universe DMX Interface

A professional level solution to the question of how to get DMX outputs from a PC to a lighting rig is the MagicQ Two Universe DMX Interface. It is still very economical and provides flexible and small form-factor options to a range of system designs.

In its most common application, MagicQ Two Universe DMX Interface performs just as the name implies, it provides two DMX universes to MagicQ PC, MagicQ Mac, and MagicQ consoles. Connection is via USB and provides two independent DMX512 and electrically isolated outputs, protecting against damage to your PC. The outputs can be patched to any of the 64 Universes available in the MagicQ software, so building a medium-sized system out of several copies of this device is a viable strategy.

DC power to operate this interface is normally provided through the USB port of the host, but a separate 12 volt power input socket is provided as well, for PCs with a lower power USB supply.

This interface can also be used with MagicQ consoles to provide additional DMX outputs, making it a simple and easy to set up configuration when just a couple more universes is enough to get the job done.

MagicQ Two Universe DMX Interface unlocks the restricted features of MagicQ such as full screen Execute Window, iOS/Android remote and remote control.

	Twin isolated DMX512 Outputs	USB connection to MagicQ PC or Mac
	Powered from USB or input jack	Supplied with USB cable
	Connects via USB and provides two independent DMX512 interfaces	The two DMX outputs are optically isolated from the USB to protect against damage to your PC
	Highly accurate DMX framing is possible with full 512 bytes frames	USB ports: 1 (for connection to MagicQ PC system)
	In normal operation the interface is powered from the USB port	A separate 12 volt power input socket is provided for connection to low power USB ports
	Depth: 81mm (3.2")	Height: 48mm (1.9")
	Weight: 0.25kg (0.5lb)	Width: 130mm (5.2")



100-012 Rack Mount Dongle

Rack Mount Dongle

MagicQ Rack Mount Dongle is a USB Dongle that unlocks restricted features in MagicQ Software and MagicHD Media Player. It is most often used when the system is going into a rack mount computer and will not be including other ChamSys products.

Features:

- Stand alone MagicHD mode - 8 layers
- Scheduled Events
- Remote control (via iOS, Android, PC, Mac)
- Audio Input
- Full Screen Execute
- Web Server editing (viewing is supported)
- Autostarting Playbacks
- Playback Synchronisation
- Multi Programming
- Triggering of playbacks using DMX input
- USB-MIDI Support within MagicQ



United Kingdom

Brooklands Courtyard,
First Avenue,
Southampton,
SO15 0LJ
United Kingdom

Tel: +44 (0) 2380 238666
E-mail: sales@chamsys.co.uk

United States

Headquarters

5200 N.W. 108th Avenue
Sunrise, FL 33351
USA

West Coast Branch

7555 N San Fernando Road
Burbank, CA 91505
USA

For complete specifications, visit chamsyslighting.com
Specifications are subject to change without notice.