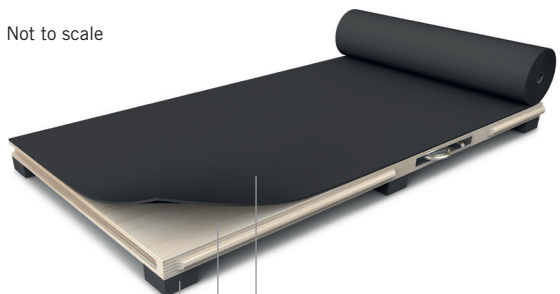




## Harlequin Liberty

Not to scale

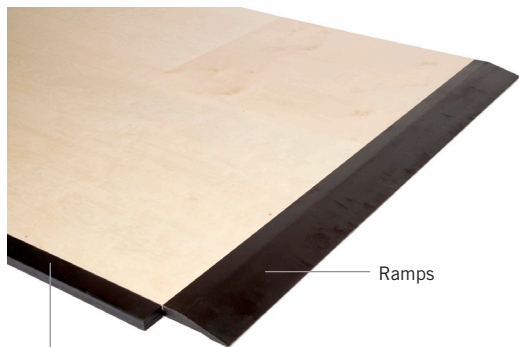


Selected Harlequin vinyl performance floor

Clear layered birch plywood with a rounded tongue and groove, plus a latch and lock system

Dual density shock dampening elastomer blocks at predetermined intervals

## Accessories



Edge trims

Ramps

Harlequin Europe SA  
29 rue Notre-Dame  
L-2240 Luxembourg  
Tel: +352 46 44 22  
Fax: +352 46 44 40  
Freephone: 00 800 90 69 1000

www.harlequinfloors.com  
info@harlequinfloors.com

LUXEMBOURG  
BERLIN  
LONDON  
PARIS  
MADRID  
LOS ANGELES  
PHILADELPHIA  
FORT WORTH  
SYDNEY  
HONG KONG

# Harlequin Liberty™

## Sprung panel floor system for portable and temporary use, or for permanent installation

**Harlequin Liberty** sprung floors are available in two versions: permanent and portable. They help to prevent injuries and offer dancers a safe and secure surface on which to work.

Panels are laid in a brickwork fashion onto the sub-floor, so that cross joints do not coincide. The panels join together by a rounded tongue and groove, which is secured in place using our 'one turn of the key' latch and lock mechanism.

**Harlequin Liberty** permanent panels offer the unique benefit of quick installation, yet are easy to dismantle and re-install in another venue, or to a different configuration.

**Harlequin Liberty** portable panels are suitable for both touring dance companies and temporary use in entertainment venues where the stage floors are too harsh for dance and require a sprung floor solution.

**Harlequin Liberty** is finished by choosing an appropriate Harlequin vinyl performance floor from our range. For permanent and semi-permanent use, installation can be carried out either by the customer themselves or by our highly-skilled technical team.

**Harlequin Liberty** sprung floor panels and the accompanying portable Harlequin vinyl performance floor can also be stored in carts, providing an easy and safe way for stage crew to move them on tour or around a venue.

### Specification guide

<b>Permanent or Portable</b>	Both
<b>Floor panel sizes</b>	1m x 1m & 2m x 1m
<b>Minimum floor thickness (before inclusion of chosen finish)</b>	37mm
<b>Minimum floor weight (before inclusion of chosen finish)</b>	12.5kg/m <sup>2</sup>
<b>Maximum load resistance</b> Battens can be installed under the floor to obtain a load resistance of 1500 kg/m <sup>2</sup> when using retractable bleacher seating.	670kg/m <sup>2</sup>
<b>Maximum point load</b> In case of heavy rolling loads, use a 10mm plywood track.	366kg/point
<b>Fire certificate</b>	Bfl-s1
<b>Energy return</b>	20,7%
<b>Testing standards</b>	DIN 18032-2
<b>Shock absorption</b> (DIN standard minimum requirement is 53%)	67%
<b>Vertical deformation</b> (DIN standard minimum requirement is 2,3mm)	4,1mm
<b>Surface deformation</b> (DIN standard maximum requirement is 15%)	12,8%
<b>Resistance to rolling loads</b> (DIN standard minimum requirement is 1500N)	> 1500N
<b>Installation time</b> (permanent installation)	120m <sup>2</sup> /day with 2 flooring layers

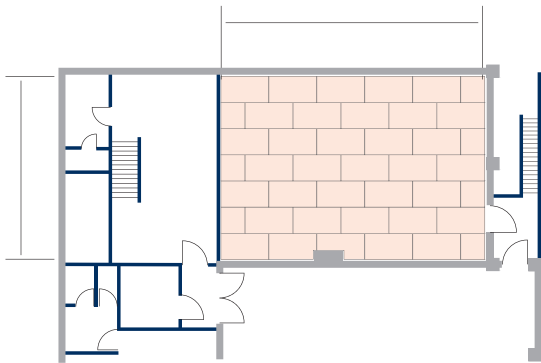
If you would like more information, advice or samples,  
contact us on freephone

**00 800 90 69 1000**

# Harlequin Liberty™

## Sprung panel floor system for portable and temporary use, or for permanent installation

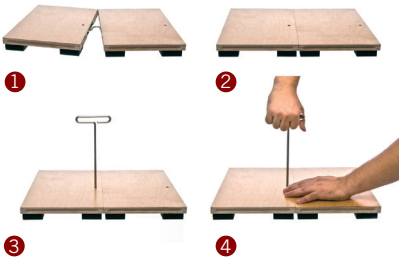
### Configuration of the panels in staggered rows



Example of Harlequin Liberty configuration (can be adapted to suit requirements).

### Design and construction

- Panels are made out of birch multi-ply.
- Each panel is fitted with dual density shock-damping elastomer blocks to ensure uniform, consistent shock absorption. Tested using the Shore Durometer Test, the dual density enables the blocks to compress gradually, providing exactly the same degree of shock absorption and energy return to one or more dancers on the same panel.
- The panels are laid in brickwork fashion (i.e. staggered rows) so that the joints don't coincide, and are linked to each other by tongue-and-groove joints.
- The tongues stop 20mm from the corners, making the floor more resistant to heavy loads.
- The edges of the panels are supported by elastomer blocks..



### Connect and secure your Harlequin Liberty panels with just one turn of a key.

- 1 The tongue-and-groove panels fit together easily.
- 2 The latch system locks the panels securely together.
- 3 Turning the locking key engages the latch.
- 4 One turn of the locking key is all it takes.

Harlequin Europe SA  
29 rue Notre-Dame  
L-2240 Luxembourg

Tel: +352 46 44 22  
Fax: +352 46 44 40  
Freephone: 00 800 90 69 1000

www.harlequinfloors.com  
info@harlequinfloors.com

LUXEMBOURG  
BERLIN  
LONDON  
PARIS  
MADRID  
LOS ANGELES  
PHILADELPHIA  
FORT WORTH  
SYDNEY  
HONG KONG

### Harlequin's sprung floor application guide

In addition to Harlequin Liberty, we also produce a small range of other sprung floors, which are listed below

✓ = We recommend.

	Allegro	Cascade	Fiesta	Hi-Shine	Duo	Showfloor	Standfast	Studio	Marine	Freestyle	Solid hardwood	Engineered board
<b>Activity</b>		✓	✓				✓	✓	✓	✓	✓	✓
<b>Liberty (permanent)</b>		✓	✓				✓	✓	✓	✓		
<b>Liberty (portable)</b>		✓		✓	✓	✓		✓		✓		
<b>Vitality</b>		✓	✓		✓		✓	✓	✓	✓	✓	✓
<b>Flexity</b>		✓	✓		✓		✓	✓	✓	✓	✓	✓

If you would like more information, advice or samples, contact us on freephone

**00 800 90 69 1000**

# Harlequin Liberty™

## Sprung panel floor system for portable and temporary use, or for permanent installation

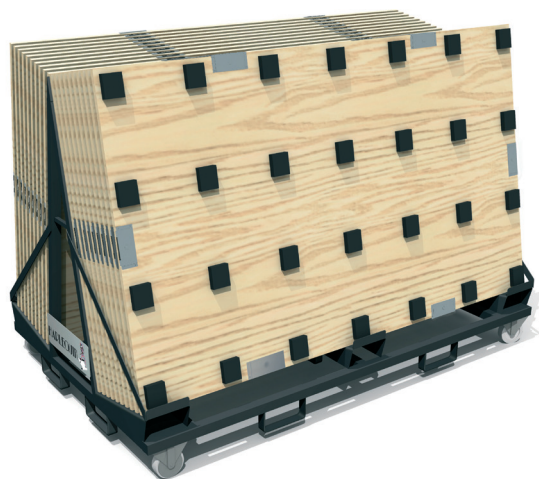


### Harlequin Liberty transport cart

Harlequin Liberty sprung floor panel transport carts are specially designed to fully protect the panels, edge trims and ramps during transport on tour.

Made out of tough, black, scratch-resistant, powder-coated steel, each cart is mounted on four swivel wheels with non-marking rims and fitted with brakes, making it easy to manoeuvre.

Each cart can transport up to 22 full-size panels which can be loaded and unloaded extremely quickly. The sides of the carts have slots for fork-lift trucks, making them easy to handle.



<b>Unladen weight:</b>	119 kg
<b>Dimensions:</b>	2,07 m (l) – 1,28 m (w) – 1,25 m (h)
<b>Capacity:</b>	22 full-size or 44 half-size panels
<b>Wheels:</b>	4 swivel-braked wheels
<b>Wheel diameter:</b>	150 mm

Harlequin Europe SA  
29 rue Notre-Dame  
L-2240 Luxembourg

Tel: +352 46 44 22  
Fax: +352 46 44 40  
Freephone: 00 800 90 69 1000

www.harlequinfloors.com  
info@harlequinfloors.com

LUXEMBOURG  
BERLIN  
LONDON  
PARIS  
MADRID  
LOS ANGELES  
PHILADELPHIA  
FORT WORTH  
SYDNEY  
HONG KONG

If you would like more information, advice or samples,  
contact us on freephone

**00 800 90 69 1000**