

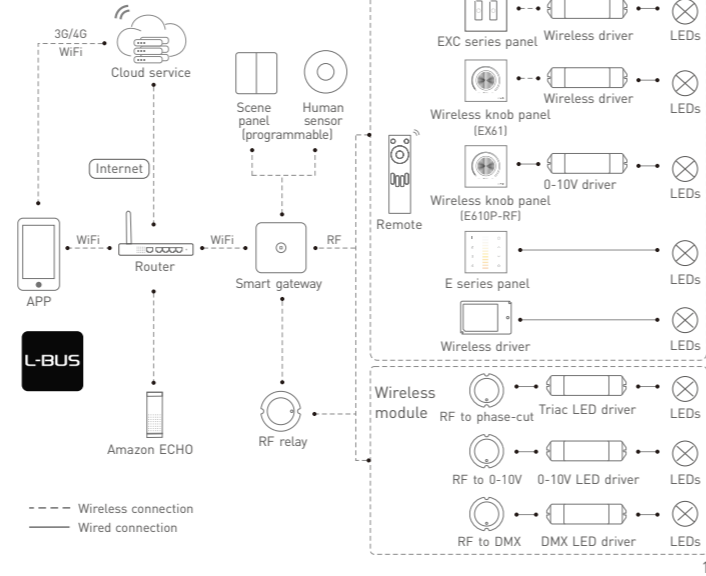
EX Series Touch Panel



Manual
www.ltech-led.com

System diagram

L-BUS



Product features

- Adopt wireless RF and wired DMX512 protocol 2 in 1 control mode, more flexible and convenient for project installation.
- Advanced RF wireless sync/zone control technology, make sure dynamic color modes synchronously among multiple drivers.
- Install touch panel at different areas, can control the same LED light, achieve multi-panel control, no quantity limited.
- Touch keys with chord and LED indicator.
- Adopts capacitive touch control technology makes LED dimming selection more user-friendly.
- Compatible with remote and APP control with adding LTECH gateway.

Technical specs

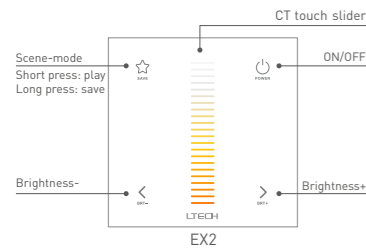
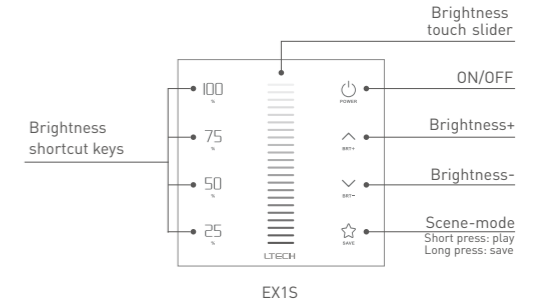
Model	EX1S	EX2	EX4S
Control type	Dimming	CT	RGBW
Input voltage	100-240Vac		
Output signal	DMX512		
Wireless type	RF 2.4GHz		
Working temp.	-20°C~55°C		
Dimensions	L86×W86×H36(mm)		
Package size	L113×W112×H50(mm)		
Weight(G.W.)	225g		

* Product with L-BUS Advance Mode logo, supports the function of WIFI-108 advanced mode.



Key functions

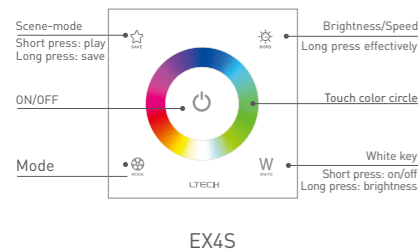
- * When blue indicator light of ON/OFF key is on, long press ON/OFF to turn on/off buzzer. When white indicator light of ON/OFF key is on, long press ON/OFF to match code.
- * EX panel's scene-mode keys are corresponding with gateway APP's scenes, the scenes can be changed by APP or panel.



CT & CT2 mode of EX2 panel switch to each other: Simultaneously long press Scene-mode button and ON/OFF button for 3 seconds, the buzzer beeps once then switch successfully. (Factory default: CT mode)

Modes	CT	CT2
DMX Addresses	C	BRT
1	C	BRT
2	W	CT

*Please switch the color temperature mode when the switch indicator light is white.

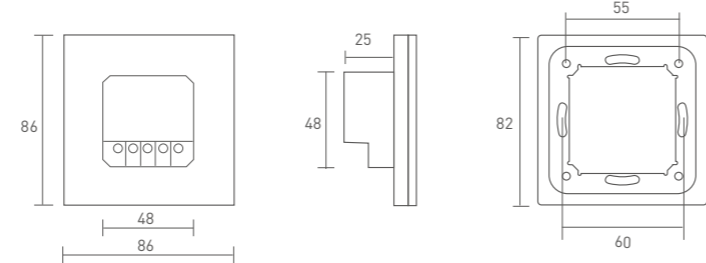


- Mode**
1. Static red
 2. Static green
 3. Static blue
 4. Static yellow
 5. Static purple
 6. Static cyan
 7. Static white
 8. RGB jumping
 9. 7 Colors jumping
 10. RGB color smooth
 11. Full-color smooth
 12. Static black (only close RGB)

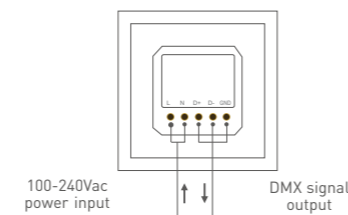
* White light only: press Mode key to choose black mode, then press W key.

Product size

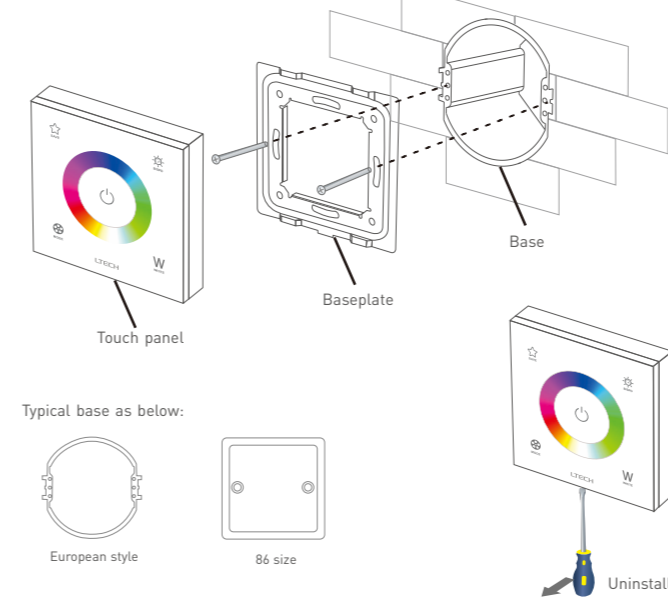
Unit: mm



Terminals

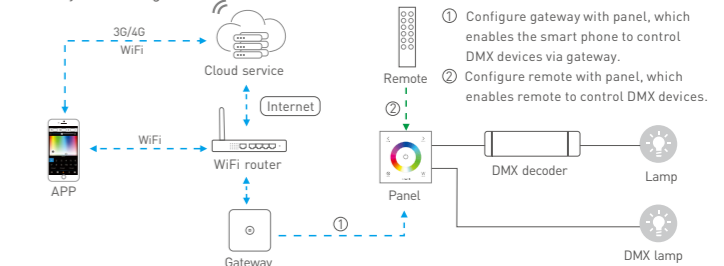


Installation instruction

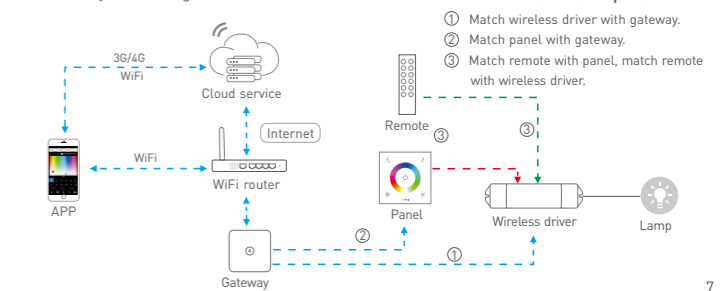


Match code sequence

DMX system wiring



Wireless system wiring



Application composition

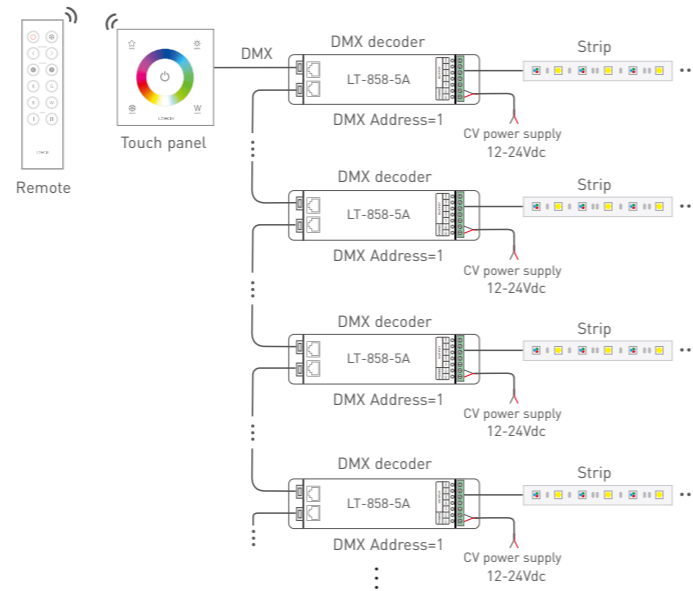
DMX512 control



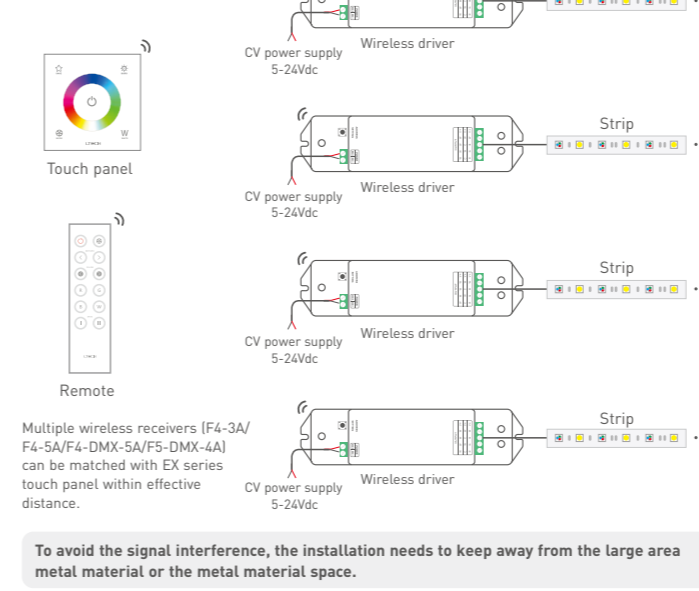
Wireless control



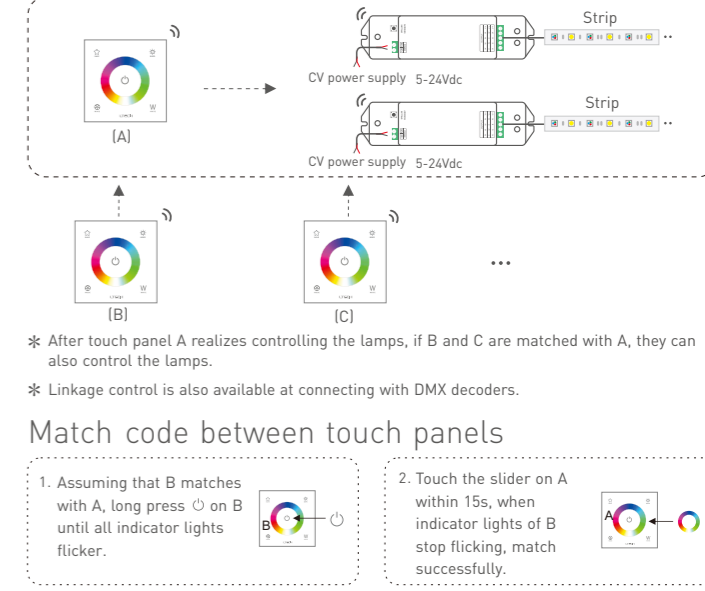
DMX wiring



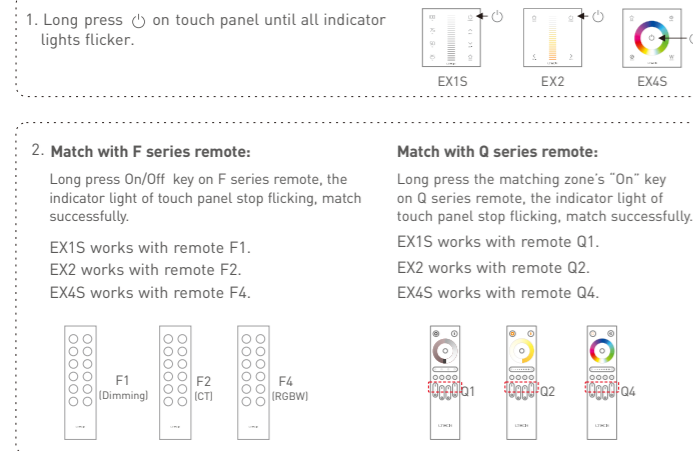
RF wireless wiring



Multi-panel control wiring



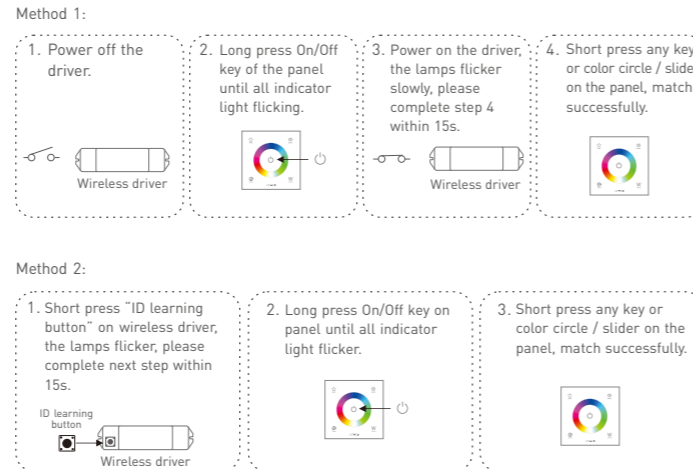
Match code between touch panel & remote



* Please match/clear code when indicator light of panel is white.

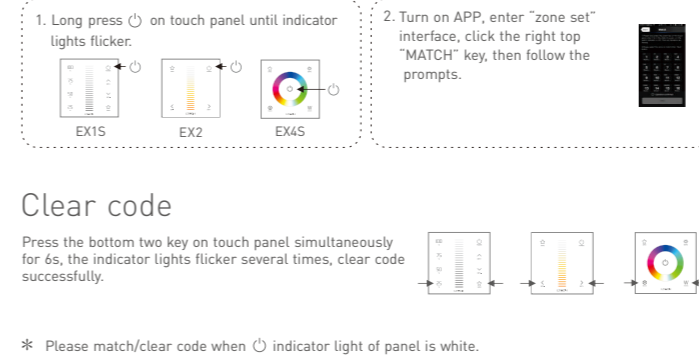
Match code between touch panel & wireless driver

Touch panels can work with wireless driver F4-3A/F4-5A/F4-DMX-5A/F5-DMX-4A.



* Please match/clear code when indicator light of panel is white.

Match code between touch panel & gateway



Warranty agreement

- We provide lifelong technical assistance with this product:
 - A 5-year warranty is given from the date of purchase. The warranty is for free repair or replacement if cover manufacturing faults only.
 - For faults beyond the 5-year warranty, we reserve the right to charge for time and parts.
- Warranty exclusions below:
 - Any man-made damages caused from improper operation, or connecting to excess voltage and overloading.
 - The product appears to have excessive physical damage.
 - Damage due to natural disasters and force majeure.
 - Warranty label, fragile label and unique barcode label have been damaged.
 - The product has been replaced by a brand new product.
- Repair or replacement as provided under this warranty is the exclusive remedy to the customer. LTECH shall not be liable for any incidental or consequential damages for breach of any stipulation in this warranty.
- Any amendment or adjustment to this warranty must be approved in writing by LTECH only.

*No further notice if any changes in the manual.
Product function depends on the goods.
Please feel free to contact our official distributor if any question.