

# AlphaPix 2

2,9 mm pixel pitch indoor rental LED screen

ORDER CODE: **APIX2**



In this fast-paced market, the **AlphaPix 2** family keep ahead of the game by consistently delivering top-quality images with the latest high-resolution indoor LED displays. The **AlphaPix 2** family use black-faced SMD LED for high-contrast and superb colour consistency in a robust, lightweight die-cast aluminium housing. The frame and fast interlocking system create a seamless image with minimal setup time. To deliver the perfect image, the **AlphaPix 2** series features a high refresh-rate, advanced greyscale properties and automatic image correction along with a viewing angle of up to 160°.

## MAIN FEATURES

- Rental-friendly die-cast aluminium housing
- Black-face LED for high-contrast and superb colour consistency
- Magnetic front access LED display modules for fast and easy maintenance
- Flicker-free on camera
- High-performance video reproduction at every level of brightness
- 160° viewing angle
- CE and EMC certified by TUV

## TECHNICAL SPECIFICATION

### VIDEO

- LED source: SMD 2020 high-power FC black face
- Pixel pitch: 2,97 mm
- Panel resolution: 168x168 pixels
- Module resolution: 84x84 pixels
- Luminous flux: 1.000 nit
- Grayscale: 16 bit
- Refresh rate  $\geq$ : 3.840 Hz
- Vertical viewing angle: 160°
- Horizontal viewing angle: 160°
- LED density: 112.896 LED/sqm

### ELECTRICAL

- Power input/output: powerCON
- Max power consumption (panel): 130 W
- Avg power consumption (panel): 45 W
- Max power consumption (sqm): 520 W
- Avg power consumption (sqm): 180 W
- Max power output: 8 modules

### CONTROL

- Control protocol: Novastar
- Signal input: RJ45
- Signal output: RJ45

### MECHANICS

- Module size (WxH): 250x250 mm
- Panel size(WxHxD): 500x500x90 mm
- Connection: seamless locking system
- Body: die-cast aluminium housing
- IP rating: IP40
- Panel weight: 8 kg
- Weight per square meter: 32 kg
- Compliant Standard: CE

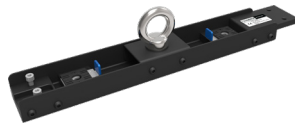
## ACCESSORIES & RELATED PRODUCTS

- AP2366CASE: Flight case for 6pcs APIX series LED display, 600x755x795 mm
- AP236H2B1: Fly bar for APIX2, APIX3, APIX6, APIX4T hanging systems, 1 column
- AP236H2B2: Fly bar for APIX2, APIX3, APIX6, APIX4T hanging systems, 2 columns
- AP236XJ: Metal joint used to connect 4 APIX2, 3, 6, 4T, modules, M10 hole for clamp
- APRD: Steel security cable for APIX hanging systems, L. 200 cm
- AP6TACL01: Power cable for APIX6T, APIX4T, L.125 cm
- AP6TDCL01: Data cable for APIX6T, APIX4T, assembled with RJ45, L.100 cm
- APIX600GSB1: APIX ground stacking system, PRO version (up to 6 m), single base
- APIX600GSB2: APIX ground stacking system, PRO version (up to 6 m), double base
- APIX600GSBS: APIX ground stacking system, PRO version (up to 6 m), queer back support
- APIX600GSBV: APIX ground stacking system, PRO version (up to 6 m), base unit vertical

ACCESSORIES



AP2366CASE



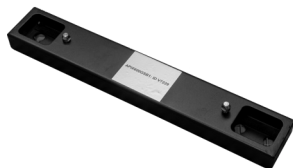
AP236H2B1



AP236H2B2



APIX600GSBS



APIX600GSB1



APIX600GSB2



APIX600GSBV



AP236XJ



APOS



APRD

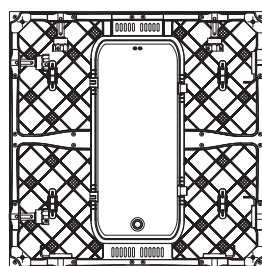
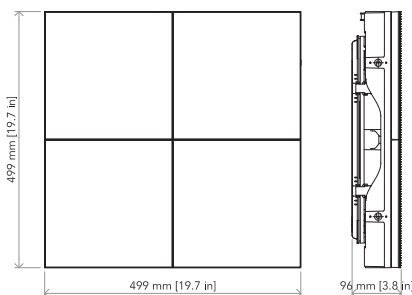


AP6TACL01



AP6TDCL01

TECHICAL DRAWINGS



PROLIGHTS is a trademark of  
MUSIC & LIGHTS S.r.l.  
musiclights.it

Via A. Olivetti snc  
04026 - Minturno (LT) ITALY  
Tel: +39 0771 72190



For more product  
info and downloads  
visit our website



prolights.it  
info@prolights.it