

# ArcPod 96Q

High power 96x10W (two-headed) RGBW/FC outdoor IP66 LED wash light for exterior installations

ORDER CODE: **ARCP0D96Q**



**ArcPod 96Q** is a two-headed bright outdoor wash light, designed for large scale outdoor installations and long throw projection. Equipped with 96x10W RGBW/FC LEDs, delivering a superior colour mixing and extreme brightness with two different optics on each head (10° top and 15° bottom). Despite its bright output, it was designed with a slim size, and offers a wide range of optics selection that can be customised or change to different options on each single head. This makes the **ArcPod 96Q** an indispensable architectural lighting fixtures for larger setups.

## MAIN FEATURES

- Two head with individual tilt adjustment and multiple lens options for fine focusing
- 96x10W RGBW/FC LEDs
- Compact form factor and fan-free design

## TECHNICAL SPECIFICATION

### LIGHT SOURCE

- Source: 96x10W RGBW / FC LEDs
- Luminous flux: (15°) 46'094 lm - (25°) 41'570 lm - (45°) 33'410 lm @full
- Lux: (15°) 61'963 lx - (25°) 25'823 lx - (45°) 5'575 lx @3 m full
- Lux: (15°) 22'307 lx - (25°) 9'266 lx - (45°) 2'007 lx @5 m full
- Source life expectancy: 50.000 hrs (L70 @25° C / 77° F)

### OPTICS

- Beam angle: (bottom head) 15° - (top head) 10°
- Additional optics: 25° - 45° (optional)

### COLOUR SYSTEM

- Colour mixing: RGBW / FC
- CTC: CTC control through dedicated DMX channel
- Colour wheel: virtual colour wheel with macros
- Macros: several pre-build macros with adjustable speed

### DYNAMIC EFFECTS

- FX generator: up to 8 linear controllable sections
- Static colour mode: selection of static colour

### BODY

- Tilt angle: 180° with manual regulation
- Body: sturdy die-cast aluminium body
- Body colour: RAL 7012

### CONTROL

- Protocols: DMX512, RDM
- DMX channels: 8 / 10 / 14 / 20 / 34 / 44 channel
- Pixel control: up to 8 linear controllable sections
- RDM: RDM ready for remote monitoring and settings
- Display: user interface through DATAMASTER external coder (not included)
- Firmware upgrade: yes, via USB - DMX interface (UPBOX1) not included
- Master/Slave: for synchronised operation of more units linked in a chain

### ELECTRONICS

- Dimmer: linear 0 ~ 100% electronic dimmer
- Dimmer curves: 4 selectable dimming modes available
- Strobe / shutter: 1 ~ 30 Hz, electronic
- Operating temperature: -20° C / +45° C (-4° F / +113° F)
- LED Control: flicker free operation
- Selectable PWM: 600 ~ 25.000 Hz

### ELECTRICAL

- Mains power supply: 100-240V - 50/60Hz
- Max power consumption: 980W
- Output (at 230V): 2 units on a single power line
- Power factor: > 0,96

### PHYSICAL

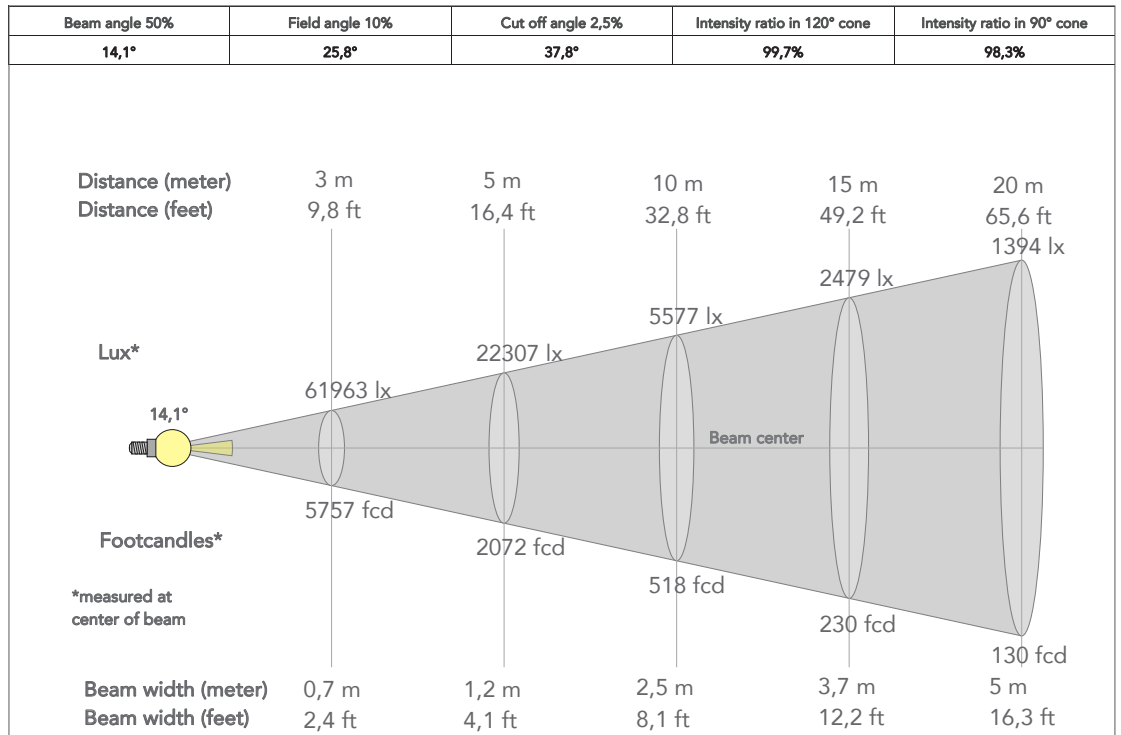
- Cooling: passive cooling and fan-free
- Adaptors: XLR and Schuko 16A adaptors included
- Signal connection: moulded IP signal IN/OUT connectors
- Power connection: moulded IP power IN/OUT connectors
- IP rating: 66 for outdoor installations
- IK rating: 08
- Dimensions (WxHxD): 670x513x220 mm
- Weight: 27 kg

## ACCESSORIES & RELATED PRODUCTS

- |                       |  |                       |   |
|-----------------------|--|-----------------------|---|
| ▪ S27QLENS10/15/25/45 | 10°/15°/25°/45° lens for SOLAR27Q/48Q, ARCP0D15Q/27Q48Q/96Q, (10°/15° included)  | ▪ AWEXAC1L03/05/10/20 | IP67 power extension cable for ARCHWORK projectors, L.03/05/10/20 m |
| ▪ A96QBD              | Black barn door 4 directional flaps to adjust the light beam, ARCP0D96Q          | ▪ AWEXDC1L03/05/10/20 | IP67 DMX extension cable for ARCHWORK projectors, L.03/05/10/20 m   |
| ▪ DATAMASTER          | RDM/DMX tool,cable tester, 5p XLR connectors,pouch, charging cable, XLR adaptors | ▪ UPBOX1U             | Firmware uploader kit, USB IN, 3pin XLR DMX OUT, USB OUT            |

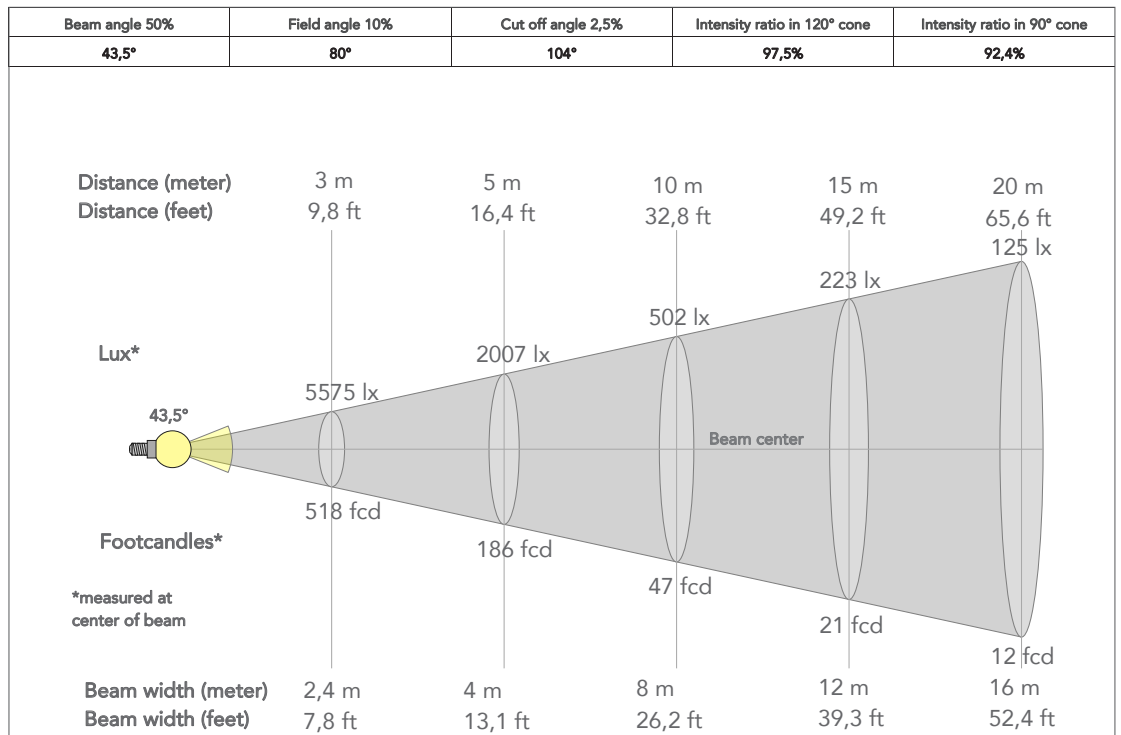
**PRESET FULL ON**

Beam angle 50%: 15°

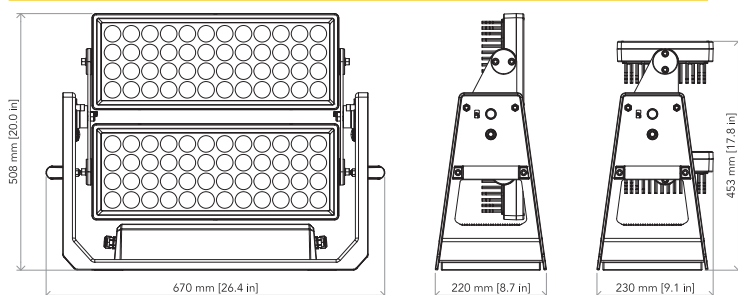


**PRESET FULL ON**

Beam angle 50%: 45°



**TECHICAL DRAWINGS**



For more product info and downloads visit our website

