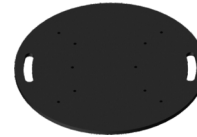


**FPU8080**

Universal aluminium floor plate for square section trusses.

**FPU5050**

Universal aluminium floor plate for square section trusses. SQ30,SQ40 truss series compatible

**FPU65R**

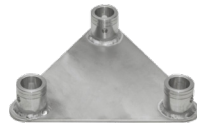
Universal circular floor plate

**SQ30FP**

Aluminium ground base for square section trusses, SQ-HQ30,

**SQ22FP**

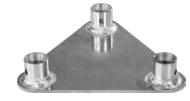
Aluminium ground base for square section trusses, SQ22 Series

**ST40FP**

Aluminium ground base for triangular section trusses, ST4

**ST30FP**

Aluminium ground base for triangular section trusses, ST30

**ST22FP**

Aluminium ground base for triangular section trusses, ST22

**SF40FP**

Aluminium ground base for flat section trusses, SF40

**SF30FP**

Aluminium ground base for flat section trusses, SF30

**SF22FP**

Aluminium ground base for flat section trusses, SF22

**FCQ5T**

Quick connection, 4 spigots, 8 pins, 8 safety spring, compatible with TQ52

**FC5**

Quick connection, 4 spigots, 8 pins, 8 safety spring, SQ-HQ30/40

**FCT5**

Quick connection, 3 spigots, 6 pins, 6 safety spring, ST30/40

**FCF5**

Quick connection, 2 spigots, 4 pins, 4 safety spring, SF30/40

**FCU5**

Quick connection, 1 spigot, 2 pins, 2 safety spring, SU30