



COMPACT66T



2-way Loudspeaker with bracket, 30W/8ohm or 60-30-15W/100V

LOUDSPEAKERS

- System type: passive 2 way

COMPONENTS

- Low frequency: 6.5"
- High frequency: 1.5"

FEATURES

- AES/program power: 60/120W
- Input 100 V: 15-30-60W

ACOUSTICAL SPECIFICATIONS

- Sensitivity: 90dB @1W/1m (free field)
- Impedance: Low impedance 8 Ohm
- Constant voltage: 70/100 V
- Frequency response: 65÷18.000Hz (±3dB)

INPUT/OUTPUT CONNECTORS

- Input signal: screw terminal

PHYSICAL

- Dimensions (WxHxD): 205x344x202mm
- Weight: 3.80kg



COMPACT88T



2-way loudspeaker with bracket, 60W/8ohm or 80-40-20W/100V

LOUDSPEAKERS

- System type: passive 2 way

COMPONENTS

- Low frequency: 8"
- High frequency: 1.5"

FEATURES

- AES/program power: 80/160W
- Input 100 V: 20-40-80W

ACOUSTICAL SPECIFICATIONS

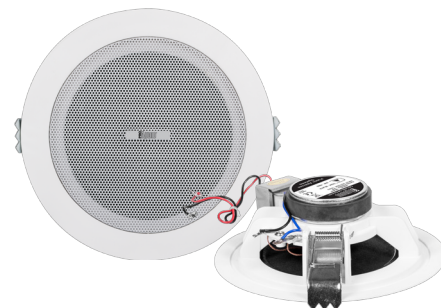
- Sensitivity: 91dB @1W/1m (free field)
- Impedance: Low impedance 8 Ohm
- Constant voltage: 70/100 V
- Frequency response: 60÷18.000Hz (±3dB)

INPUT/OUTPUT CONNECTORS

- Input signal: screw terminal

PHYSICAL

- Dimensions (WxHxD): 261x445x275mm
- Weight: 7.46kg



DS40T

Micro speaker, ideal for high-fidelity sound reproduction designed for ceiling mounting.

LOUDSPEAKERS

- System type: ceiling speaker

COMPONENTS

- Full range: 4"

FEATURES

- AES/program power: 3/6W
- Input 100 V: 1.5/3W

ACOUSTICAL SPECIFICATIONS

- Sensitivity: 90dB @1W/1m (free field)
- Constant voltage: 70/100 V
- Frequency response: 160÷20.000Hz (±3dB)

INPUT/OUTPUT CONNECTORS

- Input signal: terminal with wire

PHYSICAL

- Weight: 0.35kg



DS40TC

Micro speaker with a closed rear cap. Ideal for high-fidelity sound reproduction designed for ceiling mounting.

LOUDSPEAKERS

- System type: closed enclosure ceiling speaker

COMPONENTS

- Full range: 4"

FEATURES

- AES/program power: 3/6W
- Input 100 V: 1.5/3W

ACOUSTICAL SPECIFICATIONS

- Sensitivity: 90dB @1W/1m (free field)
- Constant voltage: 70/100 V
- Frequency response: 160÷20.000Hz (±3dB)

INPUT/OUTPUT CONNECTORS

- Input signal: terminal with wire

PHYSICAL

- Weight: 0.36kg



DS62T

Ceiling speaker for recessed mounting, ideal for vocal announcements and reproduction of background music in spaces with low ceilings.

LOUDSPEAKERS

- System type: ceiling speaker

COMPONENTS

- Full range: 2.5"

FEATURES

- AES/program power: 3/6W
- Input 100 V: 1.5/3W

ACOUSTICAL SPECIFICATIONS

- Sensitivity: 91dB @1W/1m (free field)
- Constant voltage: 70/100 V
- Frequency response: 160÷20.000Hz (±3dB)

INPUT/OUTPUT CONNECTORS

- Input signal: screw terminal

PHYSICAL

- Weight: 0.43kg



DS46T

Ceiling speaker for recessed mounting, ideal for vocal announcements and reproduction of background music.

LOUDSPEAKERS

- System type: ceiling speaker

COMPONENTS

- Low frequency: 6"
- High frequency: 1"

FEATURES

- AES/program power: 20/40W
- Input 100 V: 10/20W

ACOUSTICAL SPECIFICATIONS

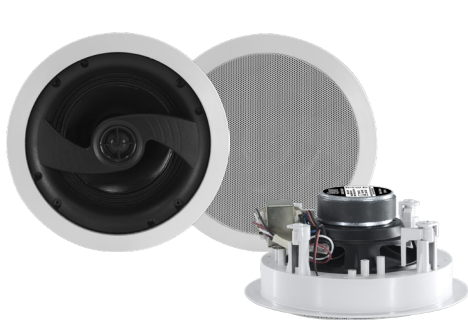
- Sensitivity: 92dB @1W/1m (free field)
- Constant voltage: 70/100 V
- Frequency response: 90÷18.000Hz (±3dB)

INPUT/OUTPUT CONNECTORS

- Input signal: terminal with wire

PHYSICAL

- Weight: 1.70kg



DS45T

Ceiling speaker for recessed mounting, ideal for vocal announcements and reproduction of background music.

LOUDSPEAKERS

- System type: ceiling speaker

COMPONENTS

- Low frequency: 5"
- High frequency: 1"

FEATURES

- AES/program power: 10/20W
- Input 100 V: 5/10W

ACOUSTICAL SPECIFICATIONS

- Sensitivity: 91dB @1W/1m (free field)
- Constant voltage: 70/100 V
- Frequency response: 100÷16.000Hz (±3dB)

INPUT/OUTPUT CONNECTORS

- Input signal: terminal with wire

PHYSICAL

- Weight: 1.24kg



DS67T

Ceiling speaker for recessed mounting, ideal for vocal announcements and reproduction of background music.

LOUDSPEAKERS

- System type: ceiling speaker

COMPONENTS

- Low frequency: 6.5"
- High frequency: 1"

FEATURES

- AES/program power: 10/20W
- Input 100 V: 2.5/5/10W

ACOUSTICAL SPECIFICATIONS

- Sensitivity: 93dB @1W/1m (free field)
- Constant voltage: 70/100 V
- Frequency response: 60÷20.000Hz (±3dB)

INPUT/OUTPUT CONNECTORS

- Input signal: terminal with wire

PHYSICAL

- Weight: 1.42kg



DS66T

Built-in ceiling loudspeaker, ideal for announcements and background music reproduction.

LOUDSPEAKERS

- System type: ceiling speaker

COMPONENTS

- Full range: 6"

FEATURES

- AES/program power: 6/12W
- Input 100 V: 3/6W

ACOUSTICAL SPECIFICATIONS

- Sensitivity: 91dB @1W/1m (free field)
- Constant voltage: 70/100 V
- Frequency response: 100÷13.000Hz (±3dB)

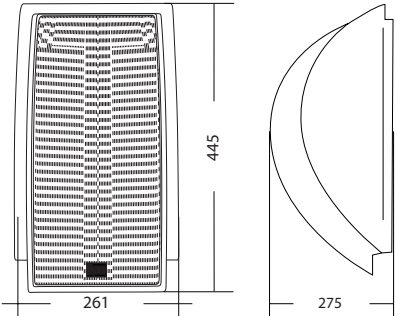
INPUT/OUTPUT CONNECTORS

- Input signal: terminal with wire

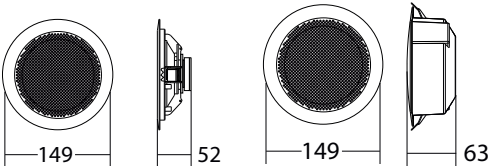
PHYSICAL

- Weight: 0.72kg

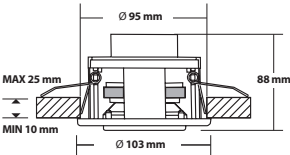
COMPACT88T - Technical Drawings



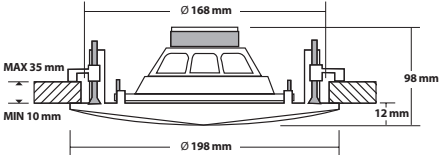
DS40T / DS40TC - Technical Drawings



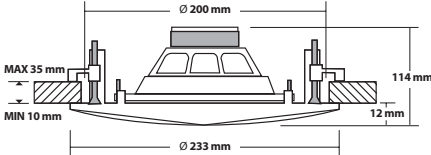
DS62T - Technical Drawings



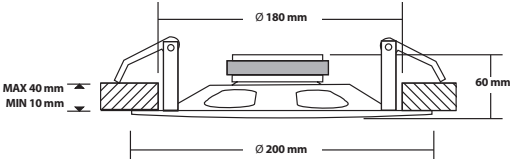
DS45T - Technical Drawings



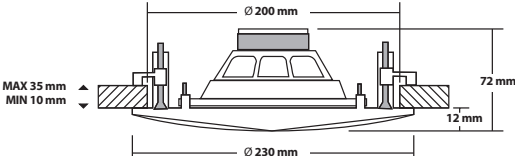
DS46T - Technical Drawings



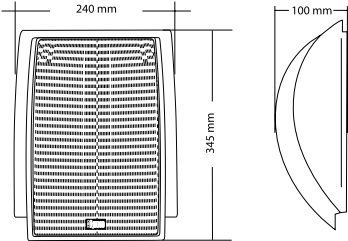
DS66T - Technical Drawings



DS67T - Technical Drawings



DP50T - Technical Drawings



DP65T / DP66T - Technical Drawings

