

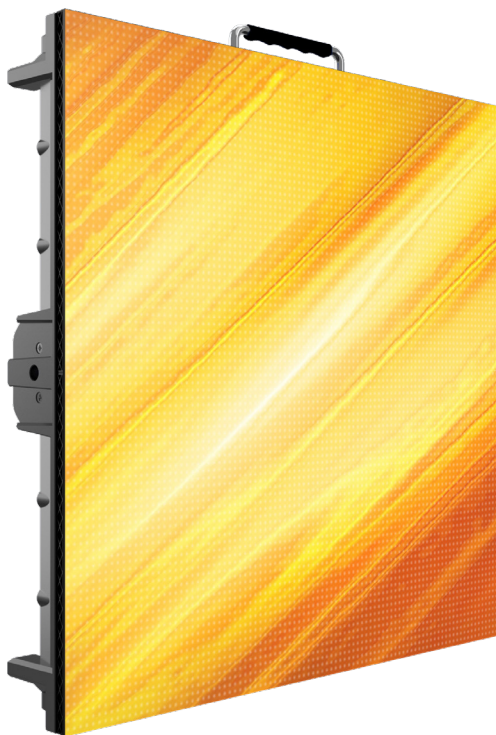


PROLIGHTS

DeltaPix series

professional made cost-effective
rental LED screen

follow us on [f](#) [@](#) [v](#) [t](#) [i](#)
prolights.it



DeltaPix 29B

ORDER CODE: **DELTA29B**

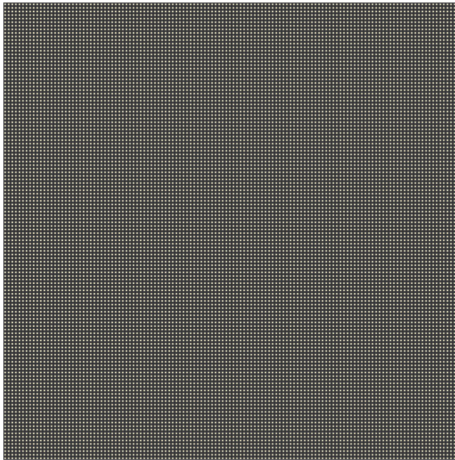
Indoor rental 2,9 mm LED screen with power backup

DeltaPix 29B is a rental LED screen for indoor use with a 2,9 mm pixel pitch, designed to meet requirements for demanding corporate, TV and install applications. The **DeltaPix 29B** panels can be curved up to 10° concave, and support automatic power backup in case of any PSU failures.

The on-board electronics include the latest generation of Novastar A5s receiver card and refresh rate up to 3.840 Hz.

MAIN FEATURES

- Curvable up to 10° concave by high precision metal plates
- Automatic power backup
- Refresh rate of 3.840 Hz



DeltaPix 29B

ORDER CODE: **DELTA29B**

Indoor rental 2,9 mm LED screen with power backup

- Scratch-resistant surface
- Advanced power backup function, drawing power from tiles on the same line
- Calibrated (datas stored into receiver card)
- Isolation through shield protection from wireless-radio noise
- Fast lock capable for one-man assembly
- Rear maintenance
- Hanging & ground-stacking installation
- Compatible modules at any position
- TUV-CE / EMC / UL



Scratch-resistant surface



Calibrated (datas stored into receiver card)



Magnetic LED modules



Power back-up



Curvable 0-10° CONCAVE



Quick-lock mechanics (no screws)



Fast one-man assembly



TUV-CE / EMC / UL



DeltaPix 48T

ORDER CODE: **DELTA48T**

Outdoor rental 4,8 mm LED screen with power backup and floor application

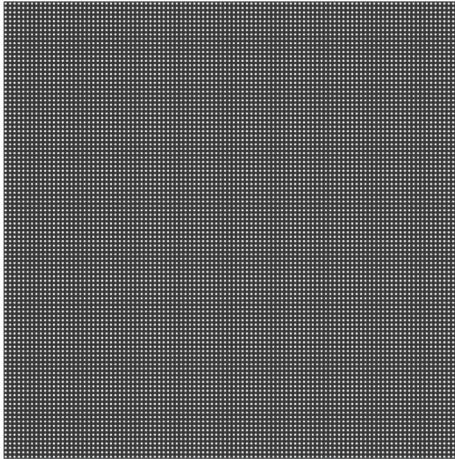
DeltaPix 48T is a rental LED screen for outdoor use with a 4,8 mm pixel pitch, designed to meet requirements for demanding touring and other semi-permanent outdoor applications.

The **DeltaPix** 48T panels can be curved up to 10° concave, and support automatic power backup in case of any PSU failures.

The **DeltaPix** 48T can also be floor mounted, by placing panels on their dedicated floor base and applying a selection of black or transparent floor cover. The on-board electronics include the latest generation of Novastar A5s receiver card and refresh rate up to 3.840 Hz.

MAIN FEATURES

- Curvable up to 10° concave by high precision metal plates
- Automatic power backup
- Refresh rate of 3.840 Hz



DeltaPix 48T

ORDER CODE: **DELTAX48T**

Outdoor rental 4,8 mm LED screen with power backup and floor application

- Floor installation (through accessories)
- 2.000 kg/sqm loading capability
- Scratch-resistant surface
- Floor leveler element & panel bracket
- Isolation through shield protection from wireless-radio noise
- Fast lock capable for one-man assembly
- Rear maintenance



Floor installation
(through accessories)



Curvable 0-10° CONCAVE



Power back-up



Fast locks



Scratch-resistant surface



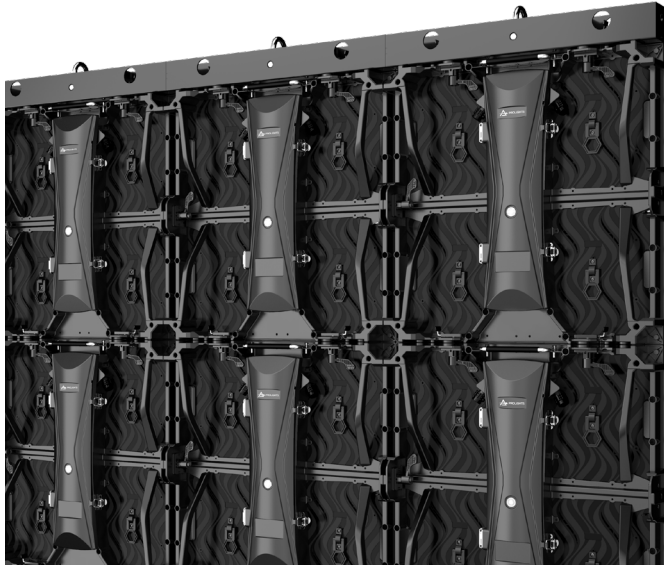
Quick-lock mechanics
(no screws)



Fast one-man assembly



TÜV-CE / EMC / UL



Fly bar hanging system

Fly bars are suitable for hanging application:

- DXHB01: 1 column 50 cm hanging bar
- DXHB02: 2 columns 100 cm hanging bar
- DXXJ: metal joint used to connect 4 pcs DELTAX series cabinets



Ground bar stacking system

Ground bar stacking solution composed of:

- DXGB01: 1 column 50 cm ground bar
- DXGB02: 2 columns 100 cm ground bar
- DXBS21: 2 in 1 back support for ground system
- DXBS31: 3 in 1 back support for ground system
- DXBS41: 4 in 1 back support for ground system
- DXBSC: back plate for ground system



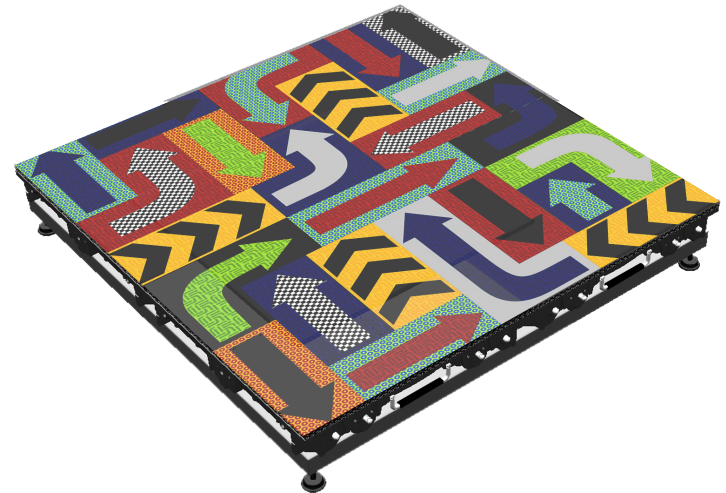
Curve configurations

Concave Curve configurations

- 0-10° concave (3°, 5°, 10°)

Through the following accessories

- DXCJ03CV
- DXCJ05CV
- DXCJ10CV



Floor mounted system

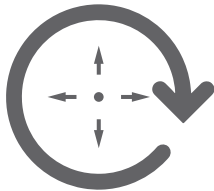
Floor mounted solution composed of:

- DXFS01: floor support for floor system fixing, 1 cabinet
- DXFS04: floor support for floor system fixing, 4 cabinet
- DXFSCB: floor leveler element for floor system
- DXFSAPBK/WH: acrylic panel to protect cabinet in floor application, black / white finishing



New Novostar A5s

- Pixel level color & brightness calibration
- Receiving card backup
- RCFG backup & read
- Cabinet mapping



Calibration restore

Restore calibration settings

P:01 #001	P:01 #002	P:01 #003	P:01 #004	P:01 #005	P:01 #006
P:01 #007	P:01 #008	P:01 #009	P:01 #010	P:01 #011	P:01 #012
P:02 #013	P:02 #014	P:02 #015	P:02 #016	P:02 #017	P:02 #018
P:02 #019	P:02 #020	P:02 #021	P:02 #022	P:02 #023	P:02 #024
P:03 #025	P:03 #026	P:03 #027	P:03 #028	P:03 #029	P:03 #030
P:03 #031	P:03 #032	P:03 #033	P:03 #034	P:03 #035	P:03 #036
P:03 #037	P:03 #038	P:03 #039	P:03 #040	P:03 #041	P:03 #042

Mapping



Copy firmware

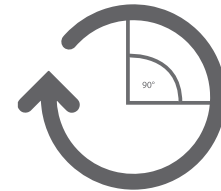
Copy receiver card firmware from other tiles



RCFGX

RCFGX restore

Double memory of the A5s receiving card to restore factory settings

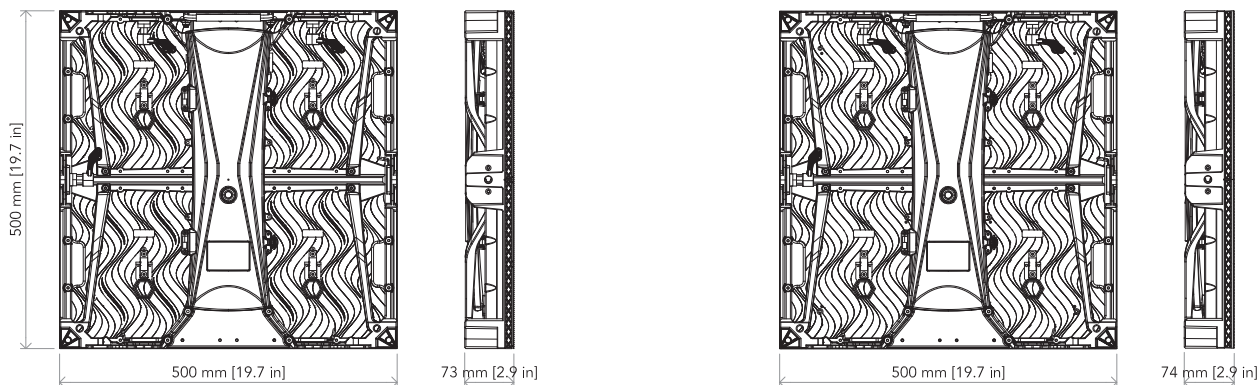


90° image rotation

Support for image rotation in 90° increments

DISPLAY FEATURES	DELTA29B	DELTA48T
LED	SMD 1515 full black	Nationstar SMD1921 black frame
Mask	YES	YES
Driver IC	ICN 2053	ICN2053
Refresh rate (Hz)	≥ 3.840	≥ 3.840
Brightness (NIT)	650	3.500
Viewing angle (HxV)	120°/140°	120°/140°
Cabinet resolution (px)	168x168	104x104
Module resolution (px)	84x84	52x52
Pixel density (px/sqm)	112.896	43.276
Driving (scan)	1/21	1/13
Magnetic LDM	Available	NO
Contrast ratio	3.000:1	3.000:1
Video frame rate (Hz)	50/60	50/60
IMAGE QUALITY		
Protocol	Novastar A5s	Novastar A5s
RCFGX restore	YES	YES
Mapping	YES	YES
Firmware copy	YES	YES
Software	Smart LCT	Smart LCT

MECHANICAL FEATURES	DELTA29B	DELTA48T
Curvable	0 - 10° concave	0 - 10° concave
Assisted mounting	Fast connections	Fast connections
Ground stacking system	YES	YES
Cabinet sizes (mm)	500x500x73	50x100x74
Cabinet weight (kg)	7	7
Rigging (cabinets)	≤20 for hanging ≤30 for grounding	≤20 for hanging ≤30 for grounding
IP (front - rear)	30	65 - 54
Operating temperature	-10°C / +45°C	-20°C / +50°C
Storage temperature	-30°C / +60°C	-30°C / +60°C
ELECTRICAL		
Input voltage (V)	100-240	100-240
Input power freq (Hz)	50/60	50/60
Input power max (W)	210	400
Input power typical (W)	70	133
Power connectors	IPKON Seetronic IN/OUT	IPKON Seetronic IN/OUT
Data connectors	RJ45 data IN/OUT	RJ45 data IN/OUT
Certifications	CE, EMC, UL	CE, EMC, UL



- | | | | |
|------------------|---|------------------|---|
| ▪ DXFCM8029 | Flightcase 8in1 for DELTAX29B | ▪ DXFCM8048 | Flightcase 8in1 for DELTAX48T |
| ▪ DXHB01/02 | Fly bar for DELTAX29B/48T systems, 1-2 columns | ▪ DXHB01/02 | Fly bar for DELTAX29B /48T systems, 1-2 columns |
| ▪ DXGB01/02 | Ground bar for DELTAX29B/48T systems, 1-2 columns | ▪ DXGB01/02 | Ground bar for DELTAX29B/48T systems, 1-2 columns |
| ▪ DXBS21/31/41 | 2in1 - 3in1 - 4in1 back support for DELTAX series LED wall for ground system fixing | ▪ DXBS21/31/41 | 2in1 / 3in1 / 4in1 back support for DELTAX series LED wall for ground system fixing |
| ▪ DXBSC | Back plate for DELTAX series for ground system fixing | ▪ DXBSC | Back plate for DELTAX series for ground system fixing |
| ▪ DXCJ03/05/10CV | Cabinet curve plate for DELTAX series 3°/5°/10° concave | ▪ DXCJ03/05/10CV | Cabinet curve plate for DELTAX series, 3°/5°/10° concave |
| ▪ DXXJ | Metal joint used to connect 4 pcs DELTAX series cabinets, M10 hole for clamp | ▪ DXXJ | Metal joint used to connect 4 pcs DELTAX series cabinets, M10 hole for clamp |
| ▪ OXFCIS100/200 | Rigging/ground-stack structure flightcase OMEGAX series LED-display, 100/200 cm | ▪ DXFS01/04 | Floor support system fixing for DELTAX series, 1-4 cabinets |
| ▪ OXFCSP | Spare part flightcase for OMEGAX series LED-display | ▪ DXFSCB | Back cushion floor system for DELTAX series LED wall |
| ▪ DXDCL01 | Data cable for DELTAX LED display series assembled with RJ45, L.140 cm | ▪ DXFSAPBK/WH | Acrylic panel to protect cabinet in floor application, black/transparent finishing |
| ▪ OXACL01 | Power cable for OMEGAX LED display series L.1 m | ▪ OXFCIS100/200 | Rigging/ground-stack structure flightcase OMEGAX series LED-display, 100/200 cm |
| ▪ DXACBK | Backup power cable for DELTAX series ledscreen | ▪ OXFCSP | Spare part flightcase for OMEGAX series LED-display |
| ▪ FMTOOL | Front maintenance tool for OMEGAX series LED screens (INDOOR) | ▪ DXDCL01 | Data cable for DELTAX LED display series assembled with RJ45, L.140 cm |
| | | ▪ OXACL01 | Power cable for OMEGAX LED display series L.1 m |
| | | ▪ DXACBK | Backup power cable for DELTAX series ledscreen |



DXDCL01

Data cable for DELTAX LED display series assembled with RJ45, L.140 cm



FMTOOL

Front maintenance tool for OMEGAX series LED screens (INDOOR)



DXBSC

Back plate for DELTAX series LED wall for ground system fixing



DXACBK

Backup power cable for DELTAX series LED screen



DXCJ03/05/10CV

Cabinet curve plate for DELTAX series, 3°/5°/10° concave



DXXJ

Metal joint used to connect 4 pcs DELTAX series cabinets, M10 hole for clamp



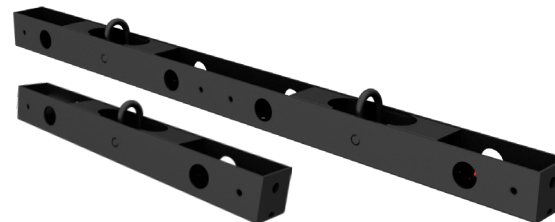
DXBS21 - DXBS31 - DXBS41

2in1 / 3in1 / 4in1 back support for DELTAX series LED wall for ground system fixing



DXGB01 - DXGB02

Ground bar for DELTAX29B/48T systems, 1-2 columns



DXHB01 - DXHB02

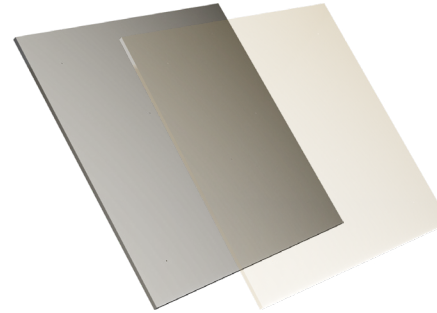
Fly bar for DELTAX29B /48T systems, 1-2 columns



DXFS01 - DXFS04
Floor support system fixing for DELTAX series, 1-4 cabinets



DXFSCB
Floor leveler element for DELTAX series LED wall floor system



DXFSAPBK - DXFSAPWH
Acrylic panel to protect cabinet in floor application, black/transparent finishing



DXFCM8029
Flightcase 8in1 for DELTAX29 B



DXFCM8048
Flightcase 8in1 for DELTAX48T



OXFCIS100
Rigging/ground-stack structure
flightcase OMEGAX - DELTAX
series LED-display, 100 cm



OXFCSP
Spare part flightcase for
OMEGAX - DELTAX series
LED-display



OXFCIS200
Rigging/ground-stack structure flightcase
OMEGAX - DELTAX series LED-display, 200 cm



MUSIC & LIGHTS S.r.l.

Sede operativa

SR 630 Formia - Cassino, Km 25,900

(Via A. Olivetti), 04026 Minturno (LT) - ITALY

Sede legale

Via Appia, km 136,200 - 04020 Itri (LT) - ITALY

Phone +39 0771 72190 - Fax +39 0771 721955

International Commercial Dpt.

Phone + 39 0771 721966 - Fax +39 0771 721977

www.musiclights.it - email: info@musiclights.it

ISO 9001:2015 Certified Company



follow us on [f](#) [@](#) [v](#) [t](#) [i](#)
prolights.it