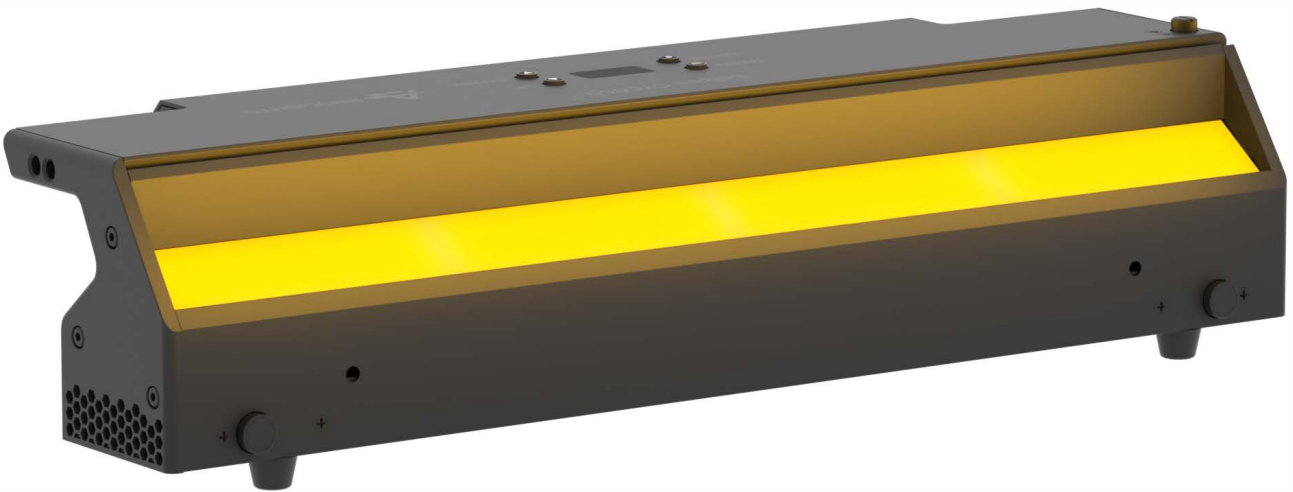


Photometric Test Report



ECLCYC050

170W RGB+W LED cyclorama projector

CONTENTS

Table of contents	2
Testing process	3
Color preset Full on	4
Color preset Red	7
Color preset Green	10
Color preset Blue	13
Color preset White	16
Color temperature 2800K	19
Color temperature 3200K	24
Color temperature 4000K	29
Color temperature 5600K	34
Color temperature 6000K	39

TESTING PROCESS

Prolights has its own optical testing laboratory in order to provide accurate photometric reports for its lighting products. The testing laboratory contains certain variety of precise lighting measurement systems that ensure an optimal reading of all the characteristic parameters of the lighting devices. All measurements are made at a controlled room temperature of 20°C without any external light sources. This photometric report is obtained through the data measured by a high precision measurement system and analyzed by a dedicate software.

Prolights measurement instrument

Prolights measurement instrument is a complete measurement system for any light source. It's equipped with two-axis goniometer, that enables to measure the full 3D distribution field of the light source. This instrument measures the light intensity, the beam angle and the most significative colors parameters, like color temperature, spectral distribution, CRI, CQS, TM-30 with a very high accuracy rate.

Please Note: All measurements are made with light source at operating temperature. Before starting the measurement, the instrument analyzes the process of the light source during the heating phase. The measuring process of all the parameters begins only when the light emission is stable, that is with a variation of less than 0.5% in a 15 minutes time frame.

Prolights measurement software

The software provides user friendly interface for the operator who does the measurements, and it also analyzes and processes all the collected data by the instrument. With this software it is possible to see the measured data in real-time and it is possible to examine all the measured data and graphics afterwards as well. All information is collected in a specific Prolights template, and the software creates also IES and LDT files, which are widely used to transfer the photometric data, and to develop lighting system.

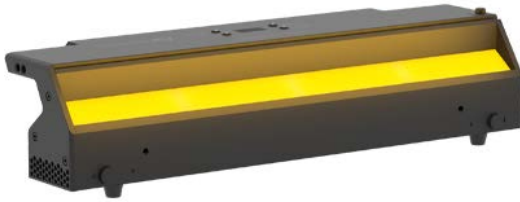
Additionally, the fixtures are rechecked using various hand-held instruments like Sekonic C-700 and Gossen Mavospec Base, this is done to ensure, that the data in the photometric report are as accurate as possible.

Total lumen output:

13100 lm

Peak candela output:

13655 cd



PRODUCT NAME:

ECL CYC050

MEASUREMENT CONDITIONS:

Beam angle:

Filter Native

Target:

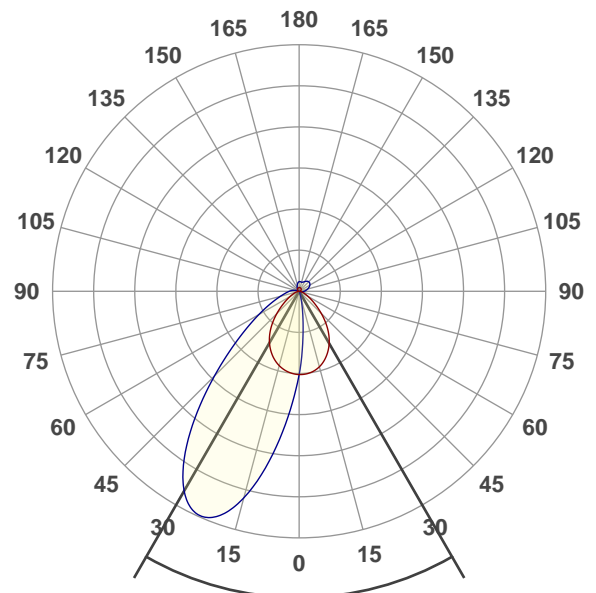
Full On

Operator:

Paolo Carvone

Date and time:

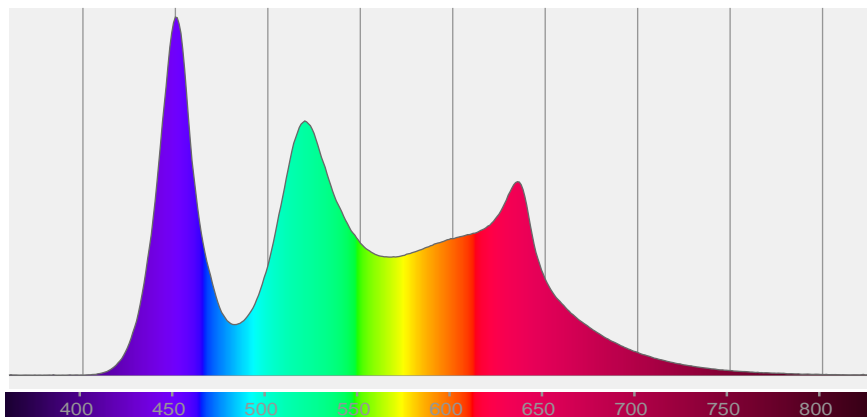
25/05/2020 13:15:32



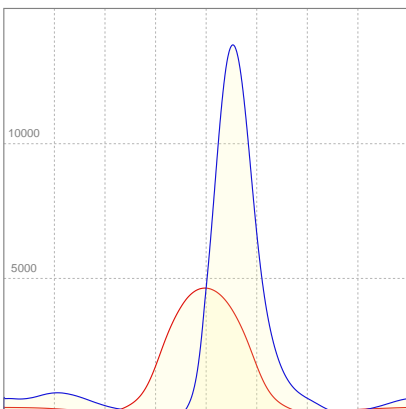
x(red curve) beam angle 50% 79.8°

y(blue curve) beam angle 50% 40°

Spectra



LINEAR DISTRIBUTION DIAGRAM



PROLIGHTS is a trademark of
MUSIC & LIGHTS S.r.l.
musiclights.it

ELECTRICAL SPECIFICATIONS

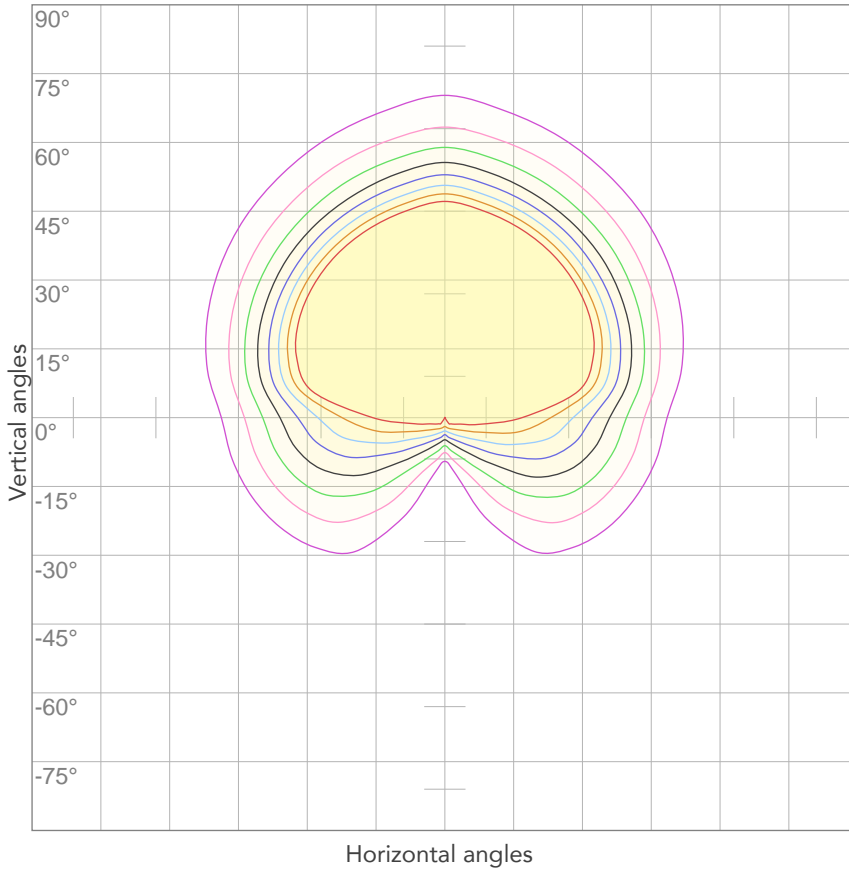
Input voltage	Input current	Input power	Effeciency
225V	0,640A	135,6W	97lm/W

Power Fc
0,95

Via A. Olivetti snc
04026 - Minturno (LT) ITALY
Tel: +39 0771 72190

prolights.it
info@prolights.it

ISO CANDELA DIAGRAM



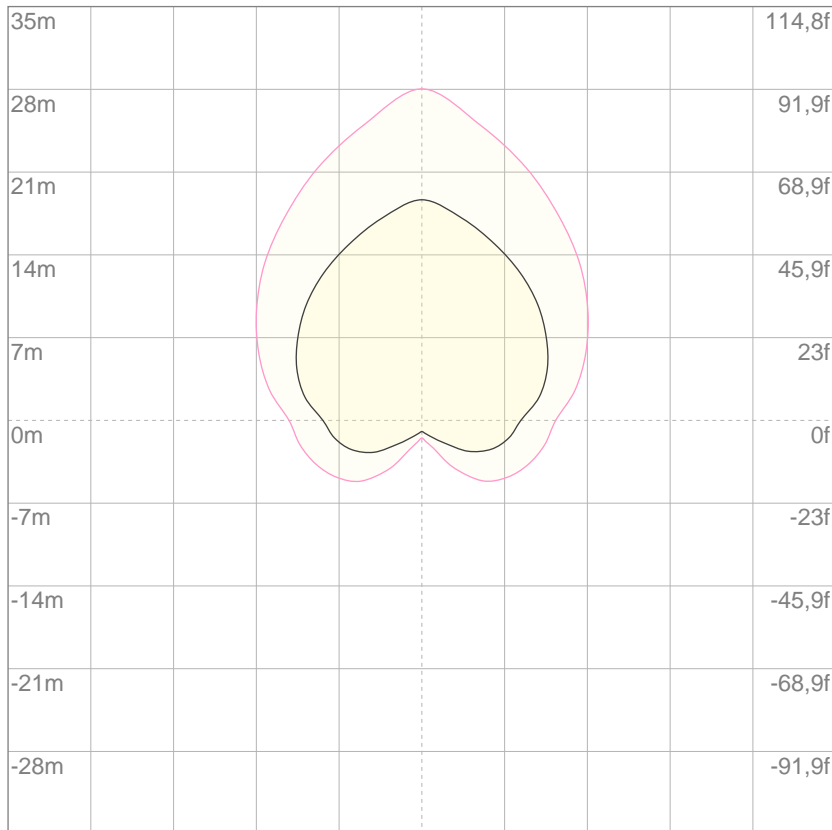
10%	464 cd
20%	928 cd
30%	1391 cd
40%	1855 cd
50%	2319 cd
60%	2783 cd
70%	3247 cd
80%	3710 cd

Conditions:

Number of c-planes: 4

Candela at center: 4638 cd

ISO LUX DIAGRAM



3%	1,39 lx
5%	2,32 lx
10%	4,64 lx
30%	13,9 lx
50%	23,2 lx

Conditions:

Number of c-planes: 4

Lux at center: 46,4 lx

Lux distribution on a surface when lamp is mounted at 10 meters from the surface.

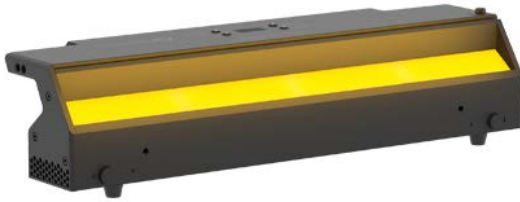
Mounting height: 10 meters (33 feet)

Total lumen output:

2368 lm

Peak candela output:

2928 cd



PRODUCT NAME:

ECL CYC050

MEASUREMENT CONDITIONS:

Beam angle:

Filter Native

Target:

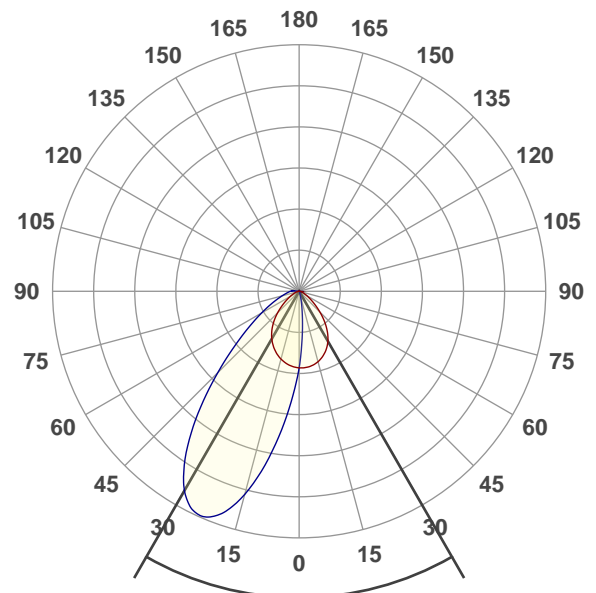
Red

Operator:

Paolo Carvone

Date and time:

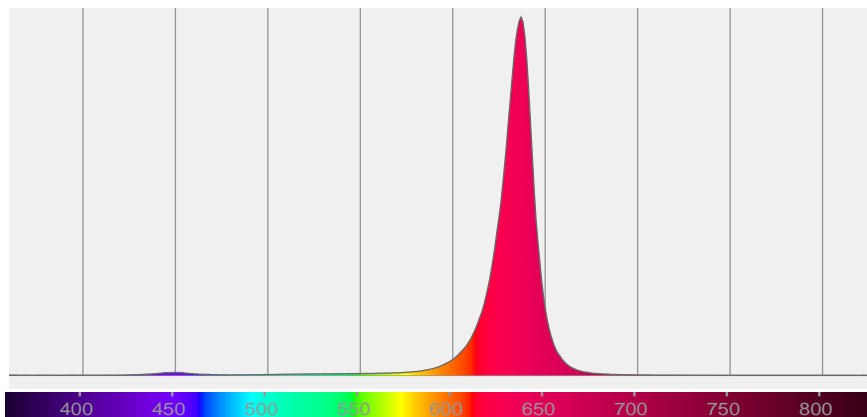
25/05/2020 15:18:37



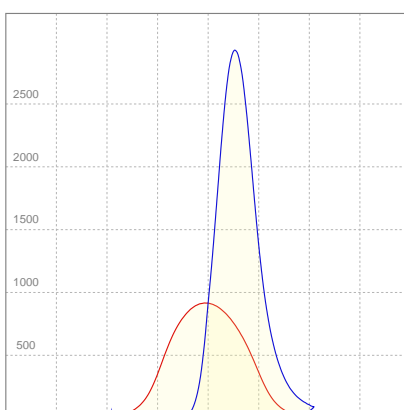
x(red curve) beam angle 50% 79.8°

y(blue curve) beam angle 50% 40°

Spectra



LINEAR DISTRIBUTION DIAGRAM

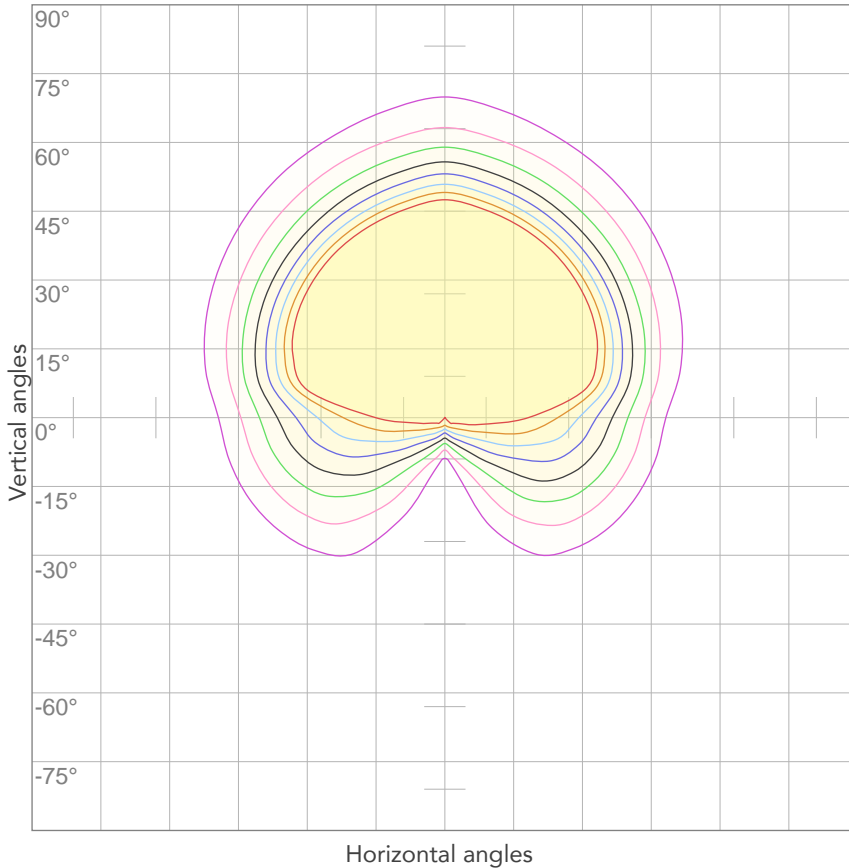


ELECTRICAL SPECIFICATIONS

Input voltage	Input current	Input power	Effeciency
225V	0,202A	37,9W	63lm/W

Power Fc
0,95

ISO CANDELA DIAGRAM

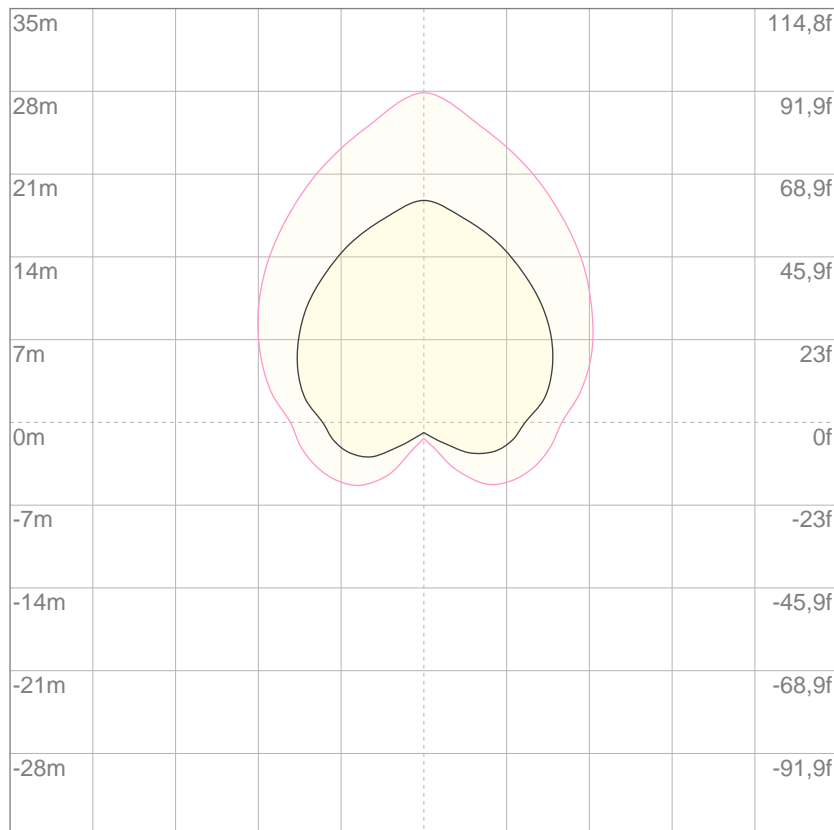


10%	91 cd
20%	183 cd
30%	274 cd
40%	366 cd
50%	457 cd
60%	549 cd
70%	640 cd
80%	732 cd

Conditions:

Number of c-planes: 4
Candela at center: 915 cd

ISO LUX DIAGRAM



3%	0,274 lx
5%	0,457 lx
10%	0,915 lx
30%	2,74 lx
50%	4,57 lx

Conditions:

Number of c-planes: 4
Lux at center: 9,15 lx

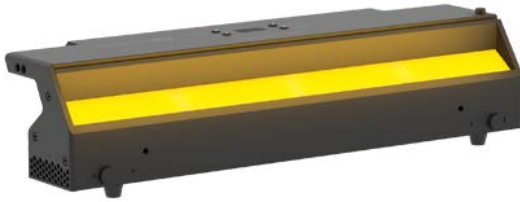
Lux distribution on a surface when lamp is mounted at 10 meters from the surface.

Total lumen output:

3621 lm

Peak candela output:

4267 cd



PRODUCT NAME:

ECL CYC050

MEASUREMENT CONDITIONS:

Beam angle:

Filter Native

Target:

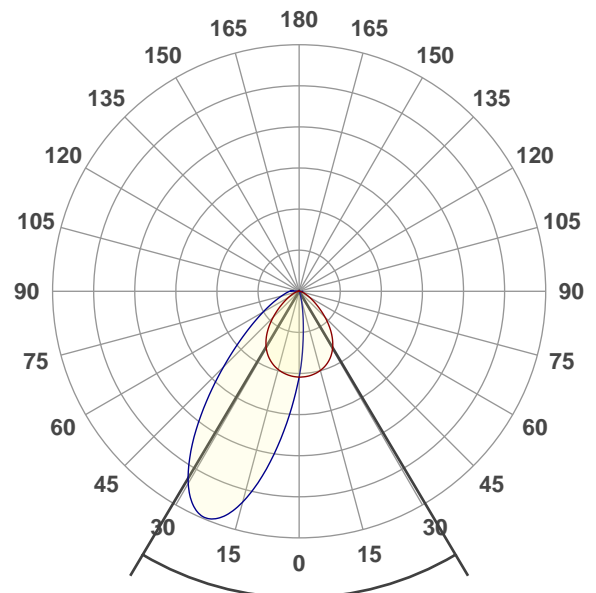
Green

Operator:

Paolo Carvone

Date and time:

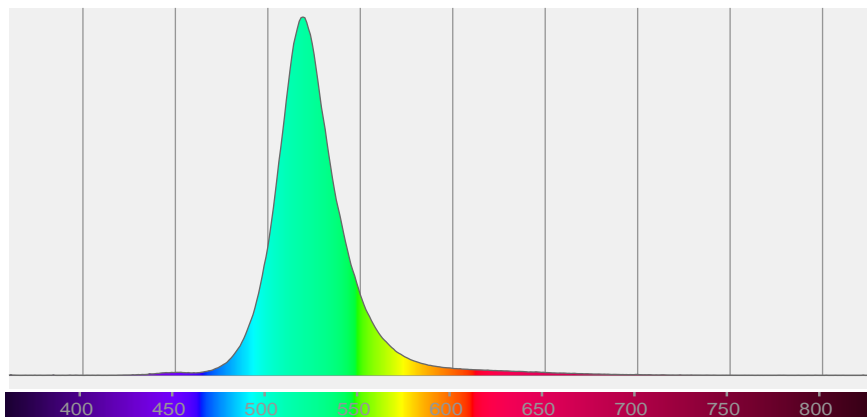
25/05/2020 15:22:45



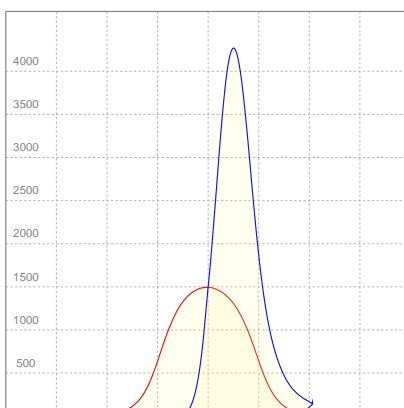
x(red curve) beam angle 50% 79.8°

y(blue curve) beam angle 50% 40°

Spectra



LINEAR DISTRIBUTION DIAGRAM

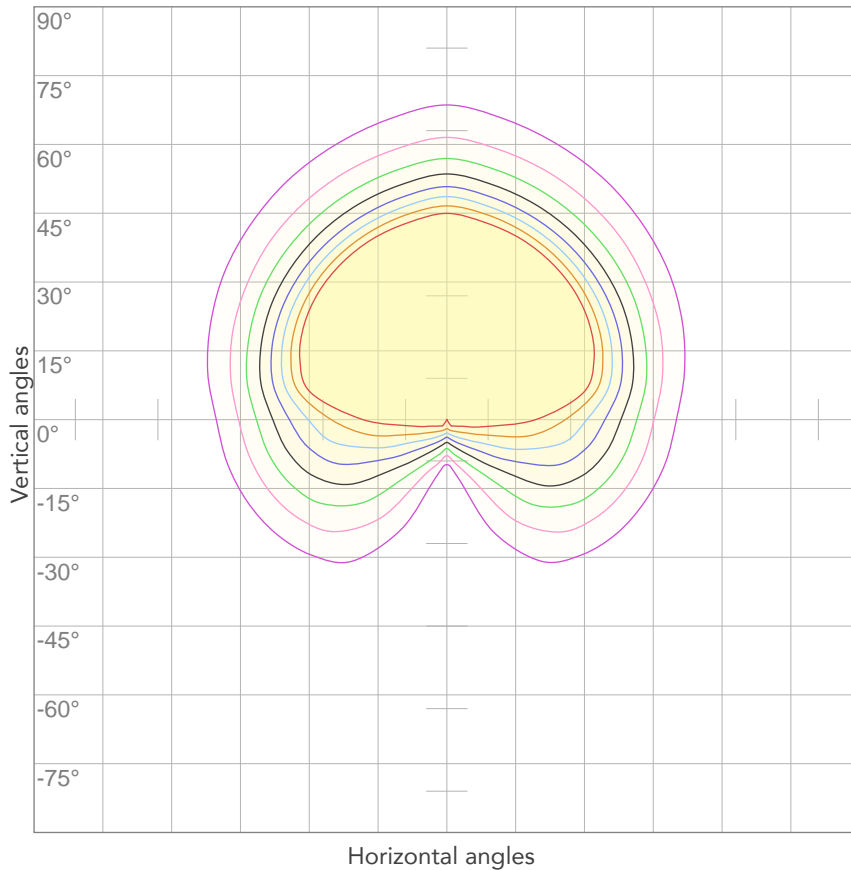


ELECTRICAL SPECIFICATIONS

Input voltage	Input current	Input power	Effeciency
226V	0,230A	44,8W	81lm/W

Powerr Fc
0,95

ISO CANDELA DIAGRAM



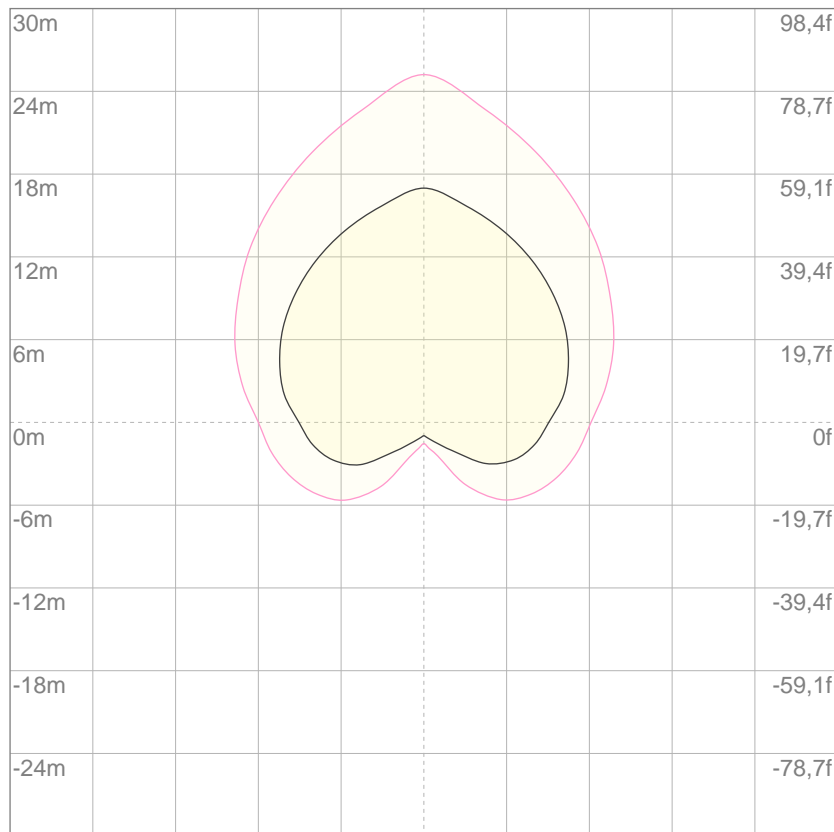
10%	149 cd
20%	299 cd
30%	448 cd
40%	598 cd
50%	747 cd
60%	896 cd
70%	1046 cd
80%	1195 cd

Conditions:

Number of c-planes: 4

Candela at center: 1494 cd

ISO LUX DIAGRAM



3%	0,448 lx
5%	0,747 lx
10%	1,49 lx
30%	4,48 lx
50%	7,47 lx

Conditions:

Number of c-planes: 4

Lux at center: 14,9 lx

Lux distribution on a surface when lamp is mounted at 10 meters from the surface.

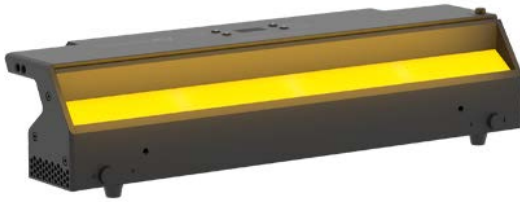
Mounting height: 10 meters (33 feet)

Total lumen output:

1276 lm

Peak candela output:

1534 cd



PRODUCT NAME:

ECL CYC050

MEASUREMENT CONDITIONS:

Beam angle:

Filter Native

Target:

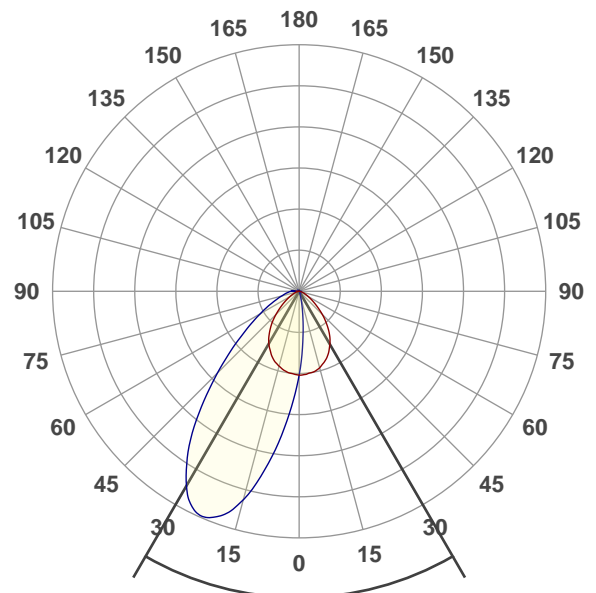
Blue

Operator:

Paolo Carvone

Date and time:

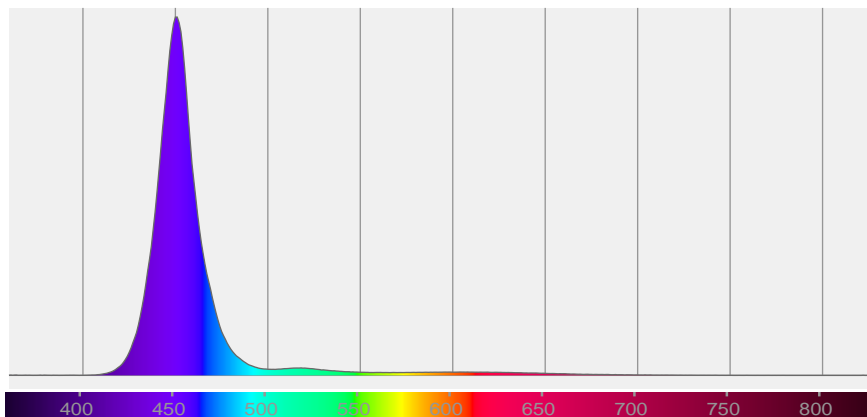
25/05/2020 15:25:37



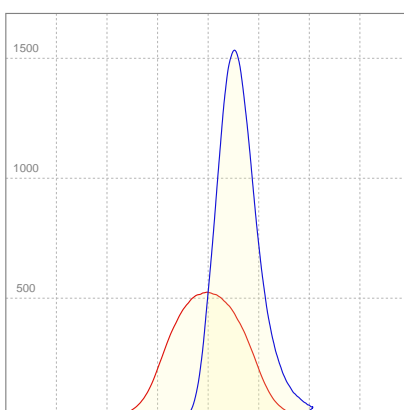
x(red curve) beam angle 50% 79.8°

y(blue curve) beam angle 50% 40°

Spectra



LINEAR DISTRIBUTION DIAGRAM

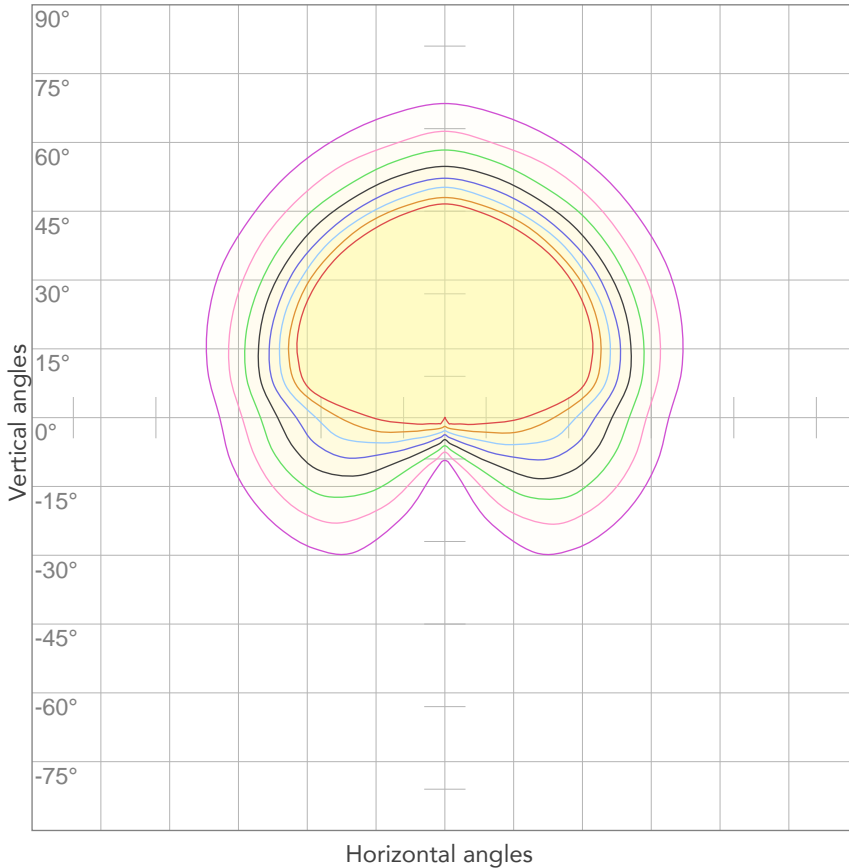


ELECTRICAL SPECIFICATIONS

Input voltage	Input current	Input power	Effeciency
226V	0,241A	47,4W	27lm/W

Powerr Fc
0,95

ISO CANDELA DIAGRAM



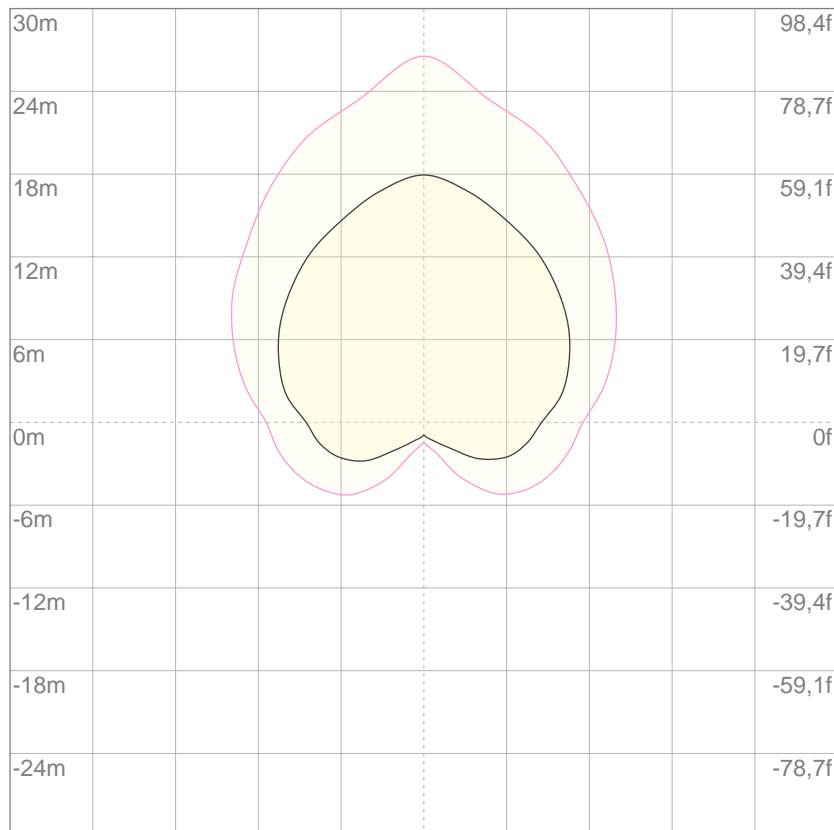
10%	52 cd
20%	105 cd
30%	157 cd
40%	210 cd
50%	262 cd
60%	315 cd
70%	367 cd
80%	420 cd

Conditions:

Number of c-planes: 4

Candela at center: 525 cd

ISO LUX DIAGRAM



3%	0,157 lx
5%	0,262 lx
10%	0,525 lx
30%	1,57 lx
50%	2,62 lx

Conditions:

Number of c-planes: 4

Lux at center: 5,25 lx

Lux distribution on a surface when lamp is mounted at 10 meters from the surface.

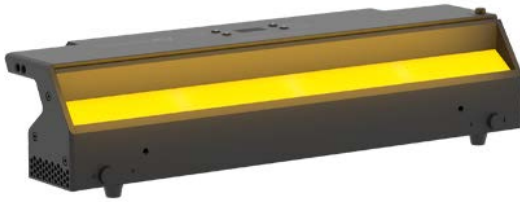
Mounting height: 10 meters (33 feet)

Total lumen output:

14629 lm

Peak candela output:

17419 cd



PRODUCT NAME:

ECL CYC050

MEASUREMENT CONDITIONS:

Beam angle:

Filter Native

Target:

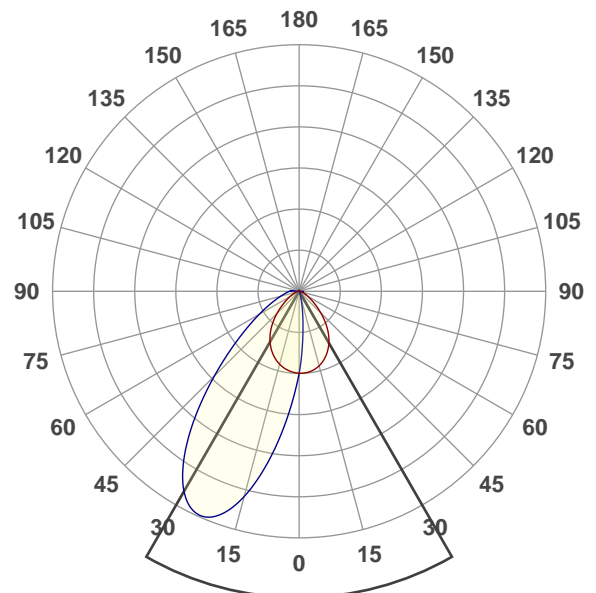
White

Operator:

Paolo Carvone

Date and time:

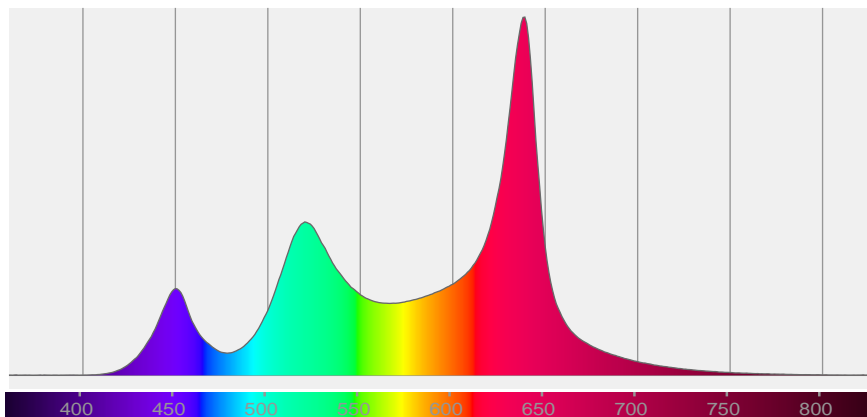
25/05/2020 18:14:40



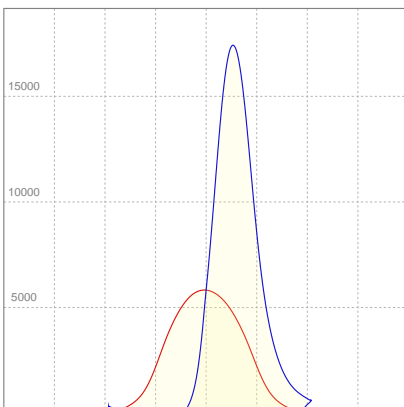
x(red curve) beam angle 50% 79.8°

y(blue curve) beam angle 50% 40°

Spectra



LINEAR DISTRIBUTION DIAGRAM

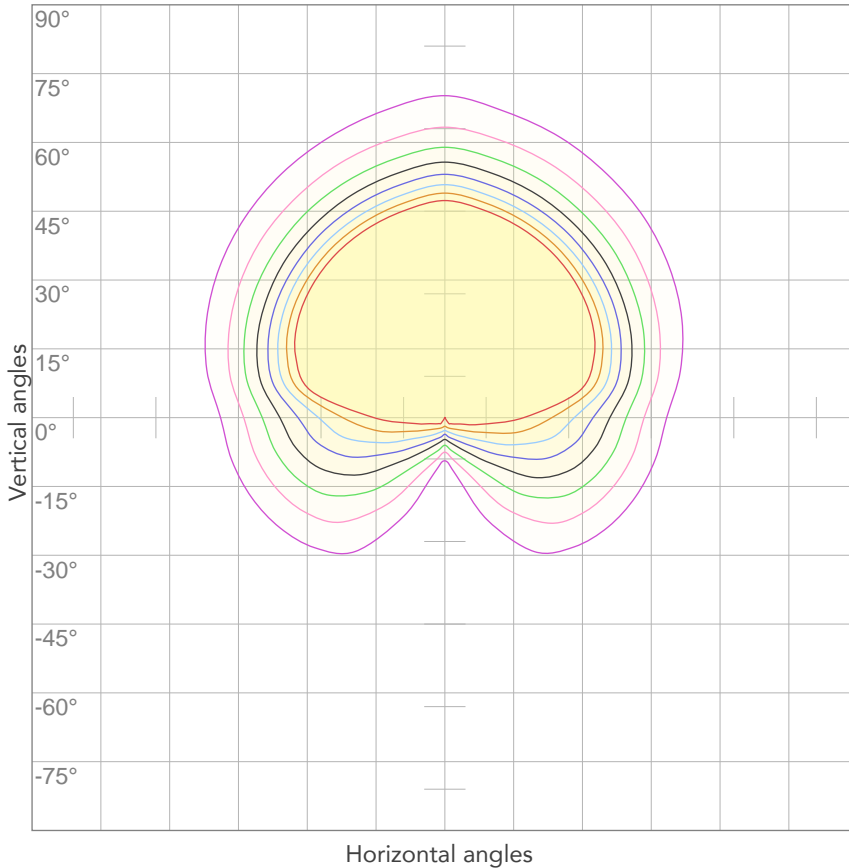


ELECTRICAL SPECIFICATIONS

Input voltage	Input current	Input power	Effeciency
225V	0,789A	167,9W	87lm/W

Powerr Fc
0,95

ISO CANDELA DIAGRAM



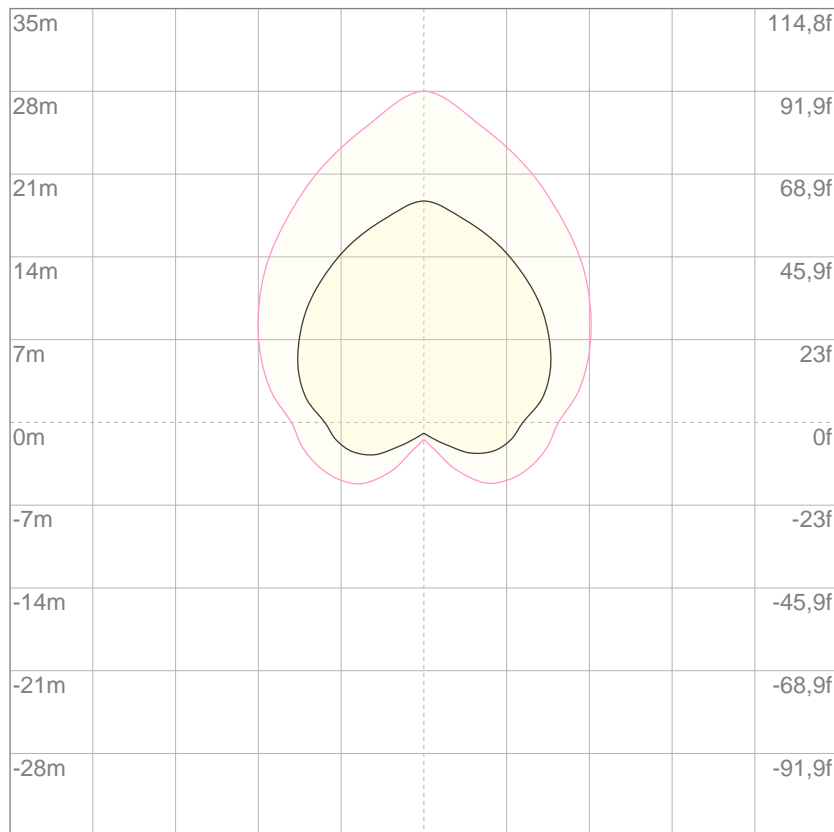
10%	582 cd
20%	1164 cd
30%	1747 cd
40%	2329 cd
50%	2911 cd
60%	3493 cd
70%	4076 cd
80%	4658 cd

Conditions:

Number of c-planes: 4

Candela at center: 5822 cd

ISO LUX DIAGRAM



3%	1,75 lx
5%	2,91 lx
10%	5,82 lx
30%	17,5 lx
50%	29,1 lx

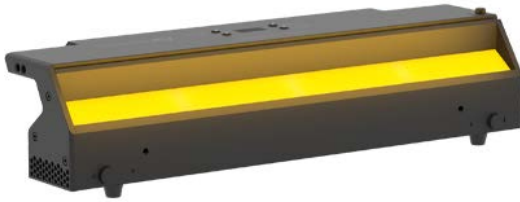
Conditions:

Number of c-planes: 4

Lux at center: 58,2 lx

Lux distribution on a surface when lamp is mounted at 10 meters from the surface.

Mounting height: 10 meters (33 feet)



Total lumen output:

7982 lm

Peak candela output:

9561 cd

Light quality:

CRI: 92,9

Color temperature:

2787 K

PRODUCT NAME:

ECL CYC050

MEASUREMENT CONDITIONS:

Beam angle:

Filter Native

Target:

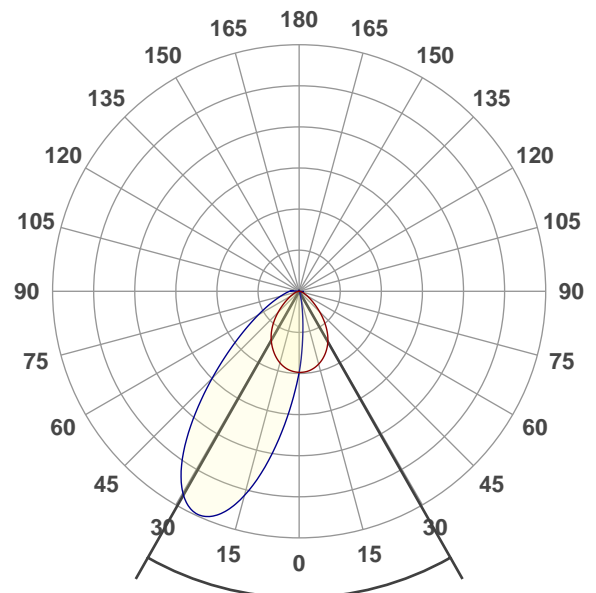
2800K

Operator:

Paolo Carvone

Date and time:

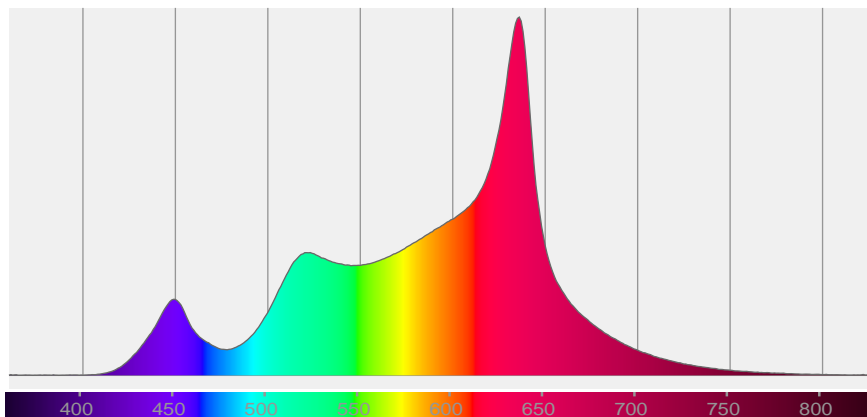
25/05/2020 15:28:55

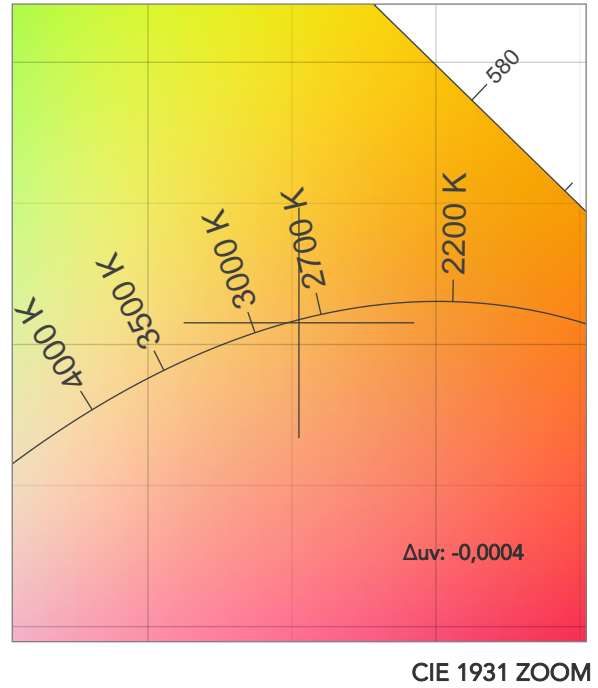
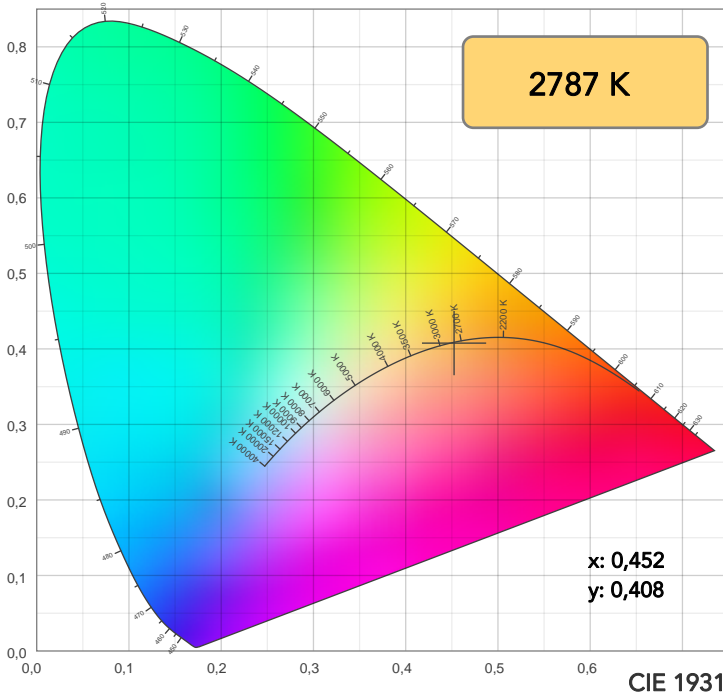


x(red curve) beam angle 50% 79.8°

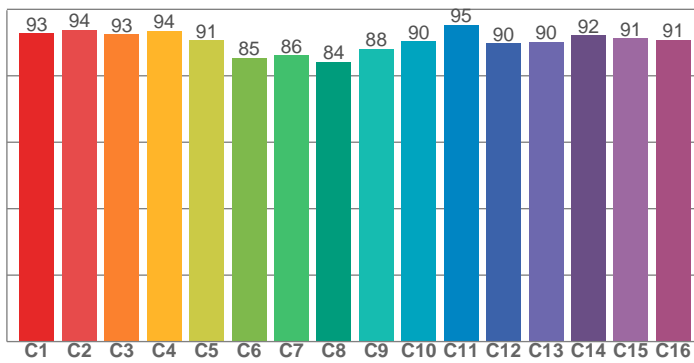
y(blue curve) beam angle 50% 40°

Spectra

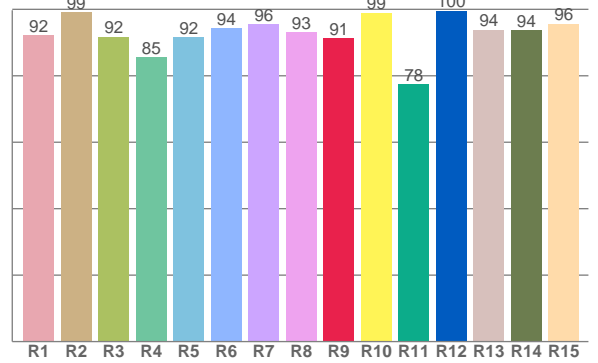




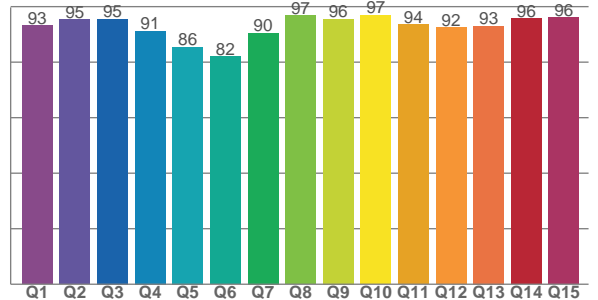
TM30: 91,0



CRI: 92,9 (R1-R8)



CQS: 91,4



CRI R values, only R1-R8 are used to calculate final CRI value

R1	R2	R3	R4	R5	R6	R7	R8	R9	R10	R11	R12	R13	R14	R15
92,3	99,1	91,7	85,5	91,7	94,4	95,5	93,1	91,3	99,0	77,5	99,6	93,8	93,6	95,7

TM30 C values, 16 binned values out of total of 99 C values

C1	C2	C3	C4	C5	C6	C7	C8	C9	C10	C11	C12	C13	C14	C15	C16
92,8	93,8	92,5	93,5	90,7	85,3	86,1	84,1	88,0	90,3	95,4	89,8	90,2	92,1	91,2	90,8

CQS Q values

Q1	Q2	Q3	Q4	Q5	Q6	Q7	Q8	Q9	Q10	Q11	Q12	Q13	Q14	Q15
93,2	95,4	95,5	91,2	85,5	82,0	90,4	96,8	95,6	96,9	93,5	92,4	93,0	95,7	96,1

COLOR PARAMETERS

Color temperature	Color rendering index	Red component	Color fidelity	Color gamut	Color quality scale	Television lighting index	Color coordinate cie 1931	Color coordinate cie 1931	Color deviation from black body
CCT	CRI	CRI R9	TM30 Rf	TM30 Rg	CQS	TLCI	x	y	Δuv
2787 K	92,9	91,3	91,0	106,5	91,4	82	0,452	0,408	-0,0004

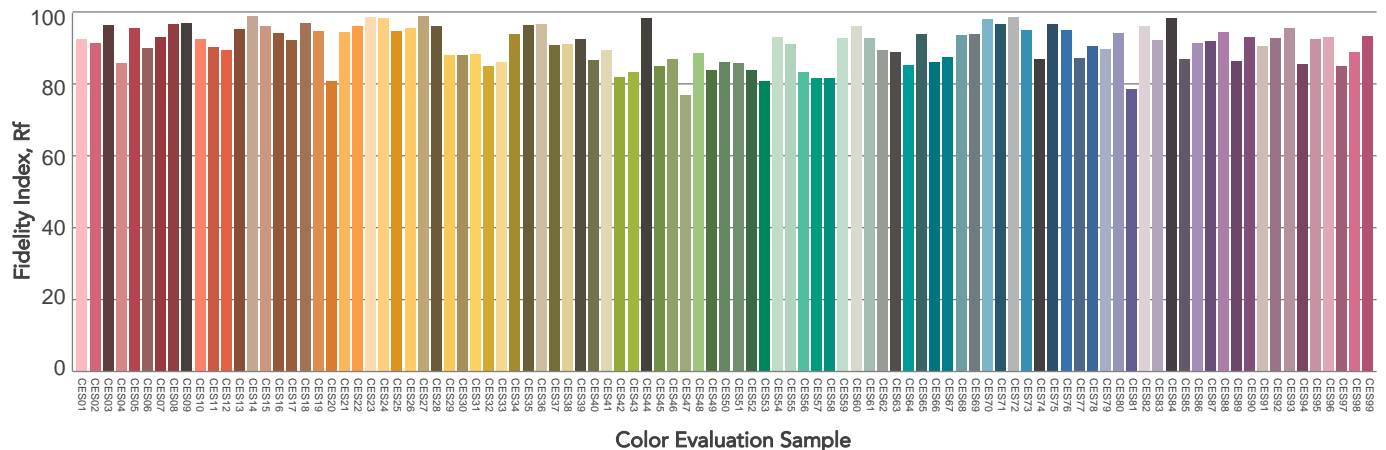
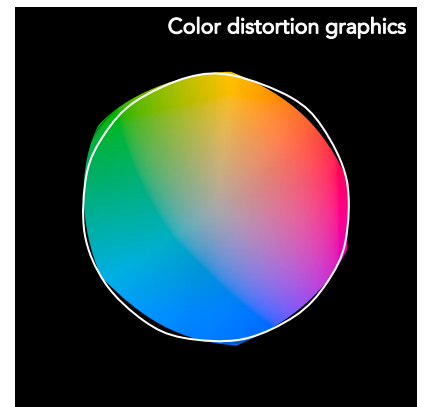
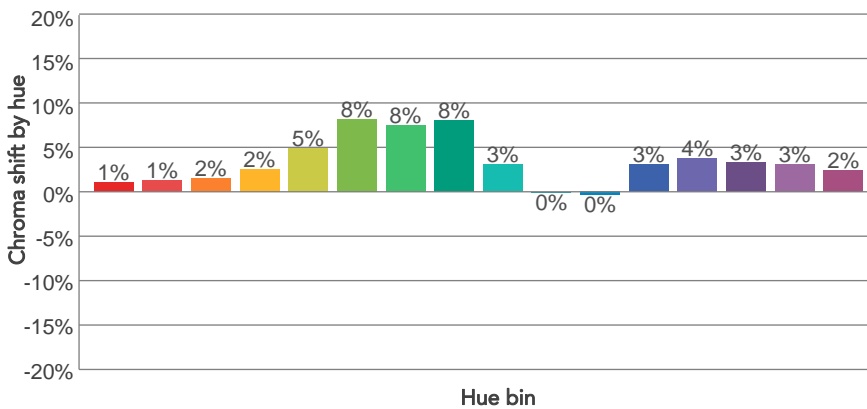
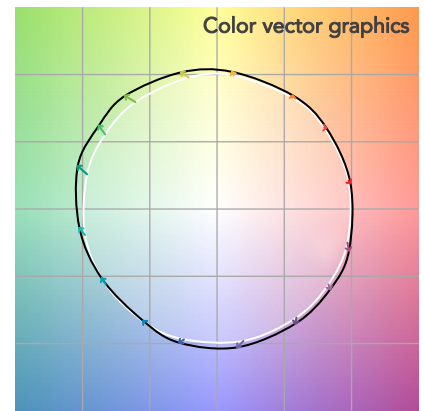
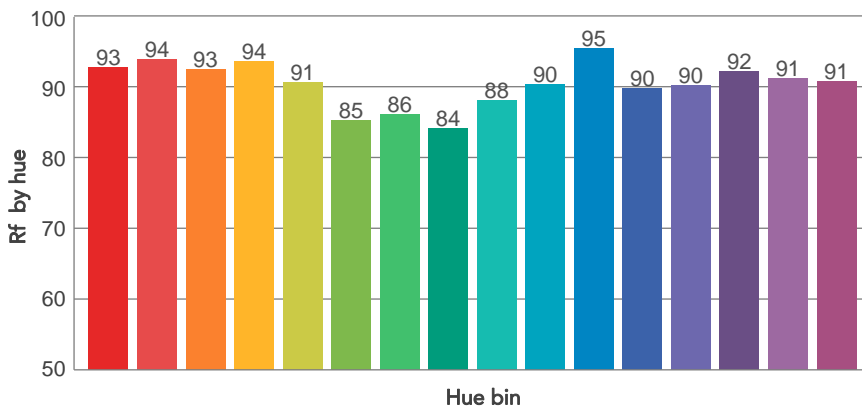
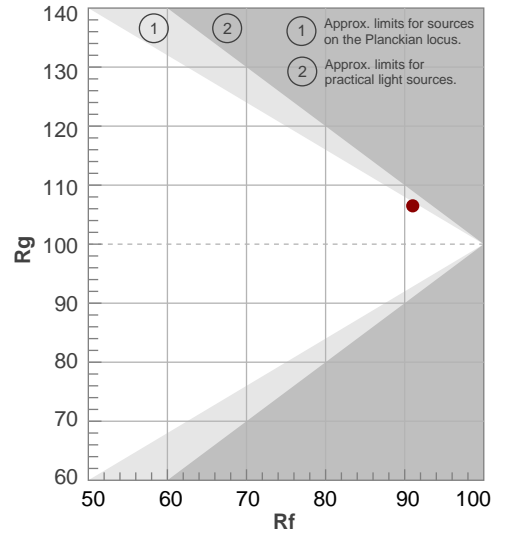
TM30 DETAILS



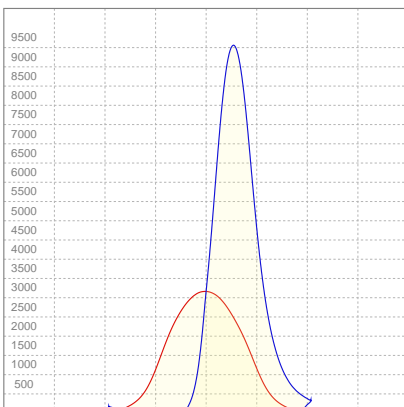
Rf 91,0
Fidelity index Rf

Rg 106,5
Gammut index

Hue Bin	R _f	Graphic shifts (%)	
		Chroma	Hue
1	93	1%	-2%
2	94	1%	-1%
3	93	2%	1%
4	94	2%	2%
5	91	5%	5%
6	85	8%	4%
7	86	8%	-3%
8	84	8%	-5%
9	88	3%	-6%
10	90	0%	-2%
11	95	0%	-2%
12	90	3%	-3%
13	90	4%	-5%
14	92	3%	-3%
15	91	3%	-2%
16	91	2%	-6%



LINEAR DISTRIBUTION DIAGRAM

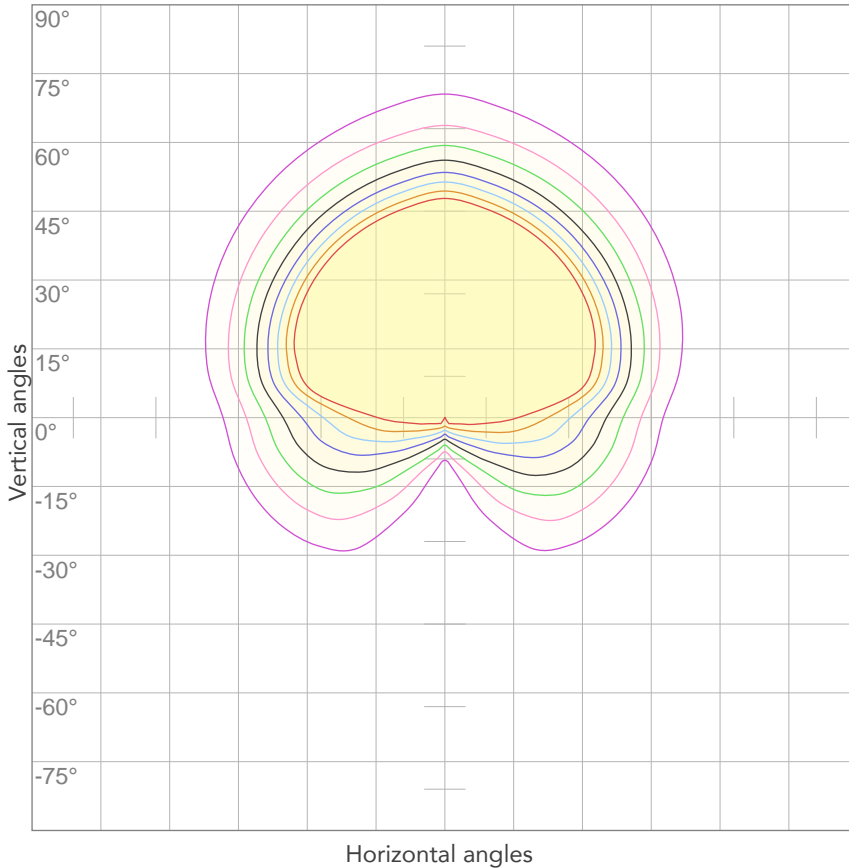


ELECTRICAL SPECIFICATIONS

Input voltage	Input current	Input power	Effeciency
226V	0,421A	88,1W	91lm/W

Power Fc
0,95

ISO CANDELA DIAGRAM



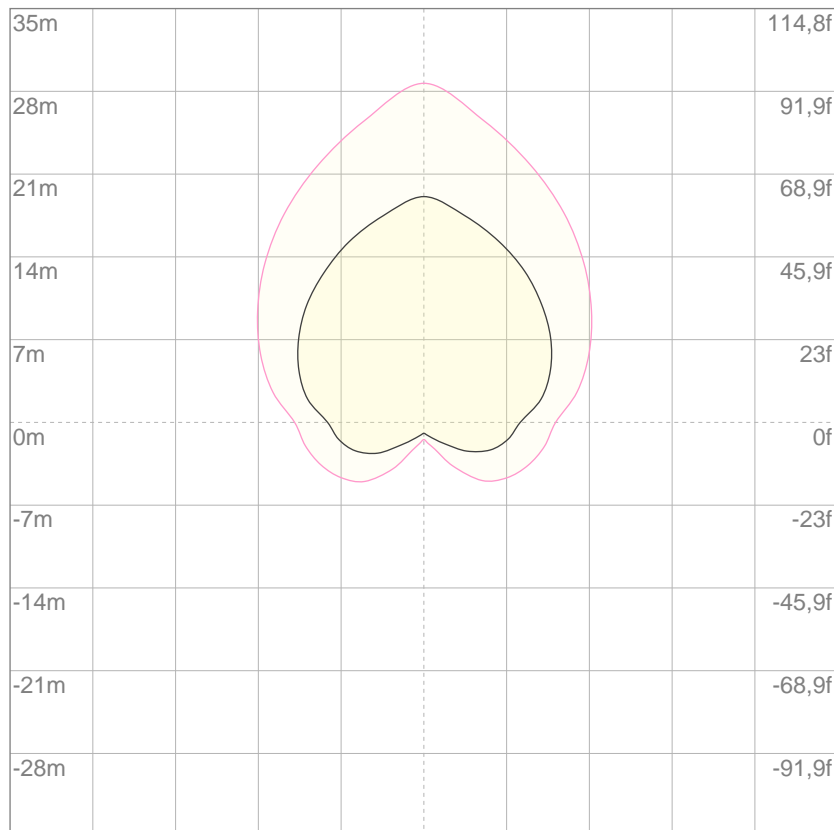
10%	316 cd
20%	633 cd
30%	949 cd
40%	1266 cd
50%	1582 cd
60%	1898 cd
70%	2215 cd
80%	2531 cd

Conditions:

Number of c-planes: 4

Candela at center: 3164 cd

ISO LUX DIAGRAM



3%	0,949 lx
5%	1,58 lx
10%	3,16 lx
30%	9,49 lx
50%	15,8 lx

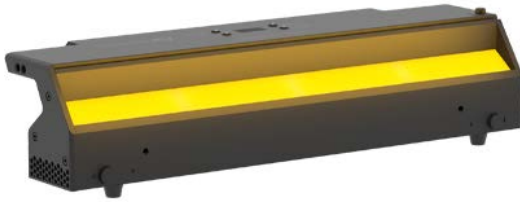
Conditions:

Number of c-planes: 4

Lux at center: 31,6 lx

Lux distribution on a surface when lamp is mounted at 10 meters from the surface.

Mounting height: 10 meters (33 feet)



Total lumen output:

7890 lm

Peak candela output:

9465 cd

Light quality:

CRI: 93,0

Color temperature:

3231 K

PRODUCT NAME:

ECL CYC050

MEASUREMENT CONDITIONS:

Beam angle:

Filter Native

Target:

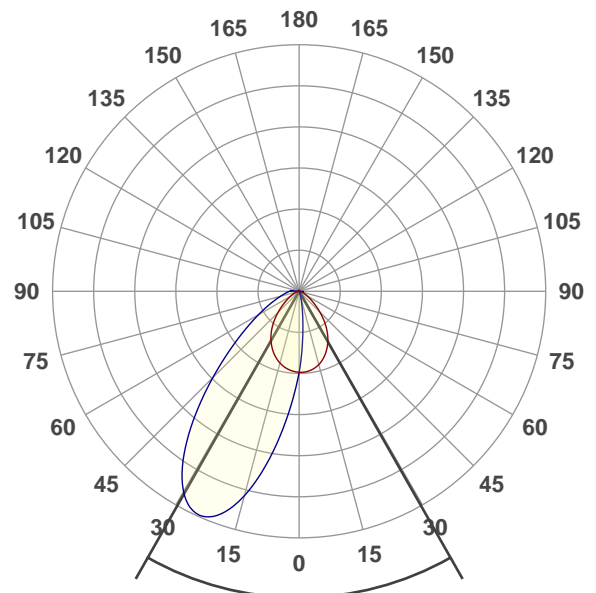
3200K

Operator:

Paolo Carvone

Date and time:

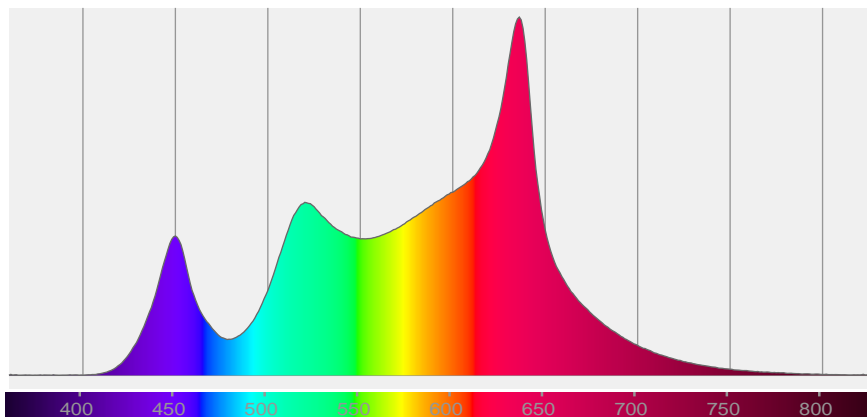
25/05/2020 15:32:17

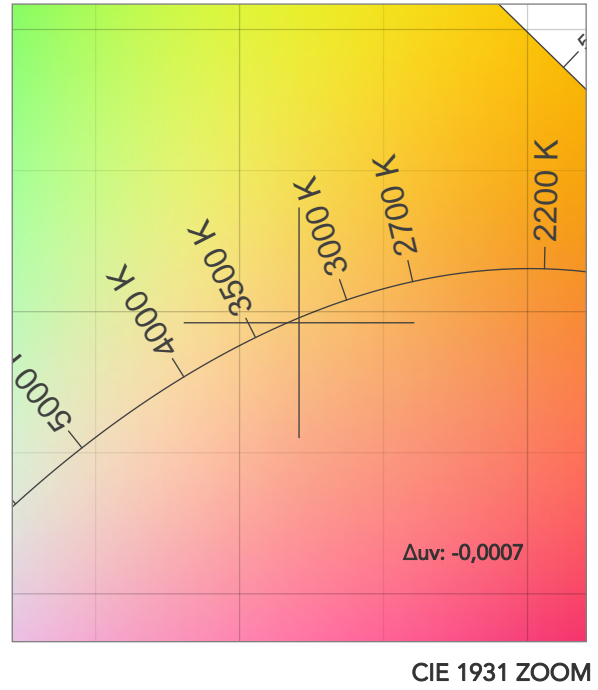
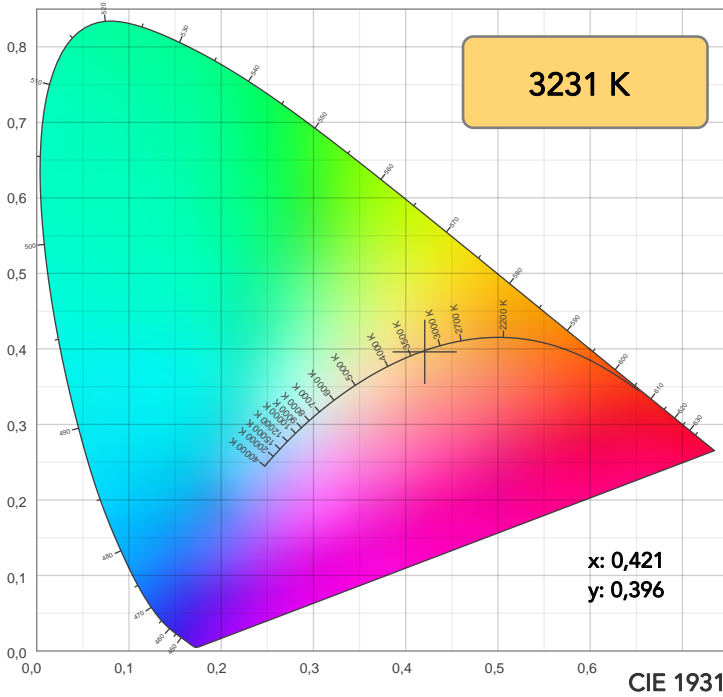


x(red curve) beam angle 50% 79.8°

y(blue curve) beam angle 50% 40°

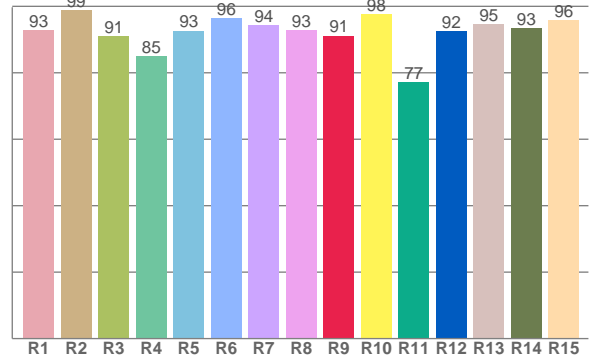
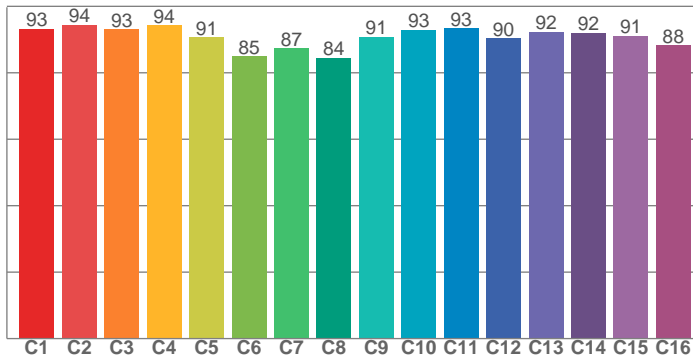
Spectra





TM30: 91,4

CRI: 93,0 (R1-R8)



CRI R values, only R1-R8 are used to calculate final CRI value

R1	R2	R3	R4	R5	R6	R7	R8	R9	R10	R11	R12	R13	R14	R15
92,8	98,9	91,0	85,0	92,6	96,4	94,3	92,8	91,1	97,7	77,2	92,5	94,6	93,5	95,9

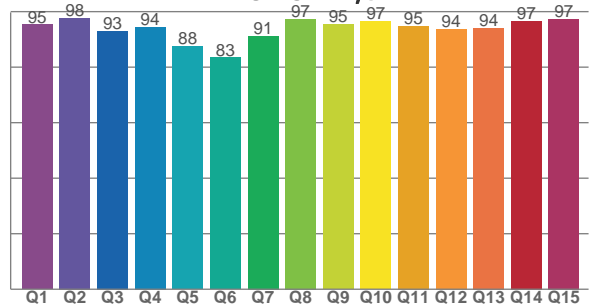
TM30 C values, 16 binned values out of total of 99 C values

C1	C2	C3	C4	C5	C6	C7	C8	C9	C10	C11	C12	C13	C14	C15	C16
93,2	94,4	93,0	94,2	90,7	85,0	87,3	84,4	90,8	92,8	93,4	90,3	92,3	92,0	91,0	88,3

CQS Q values

Q1	Q2	Q3	Q4	Q5	Q6	Q7	Q8	Q9	Q10	Q11	Q12	Q13	Q14	Q15
95,4	97,7	92,9	94,5	87,5	83,5	91,3	97,3	95,4	96,5	94,8	93,7	94,1	96,7	97,3

CQS: 92,6



COLOR PARAMETERS

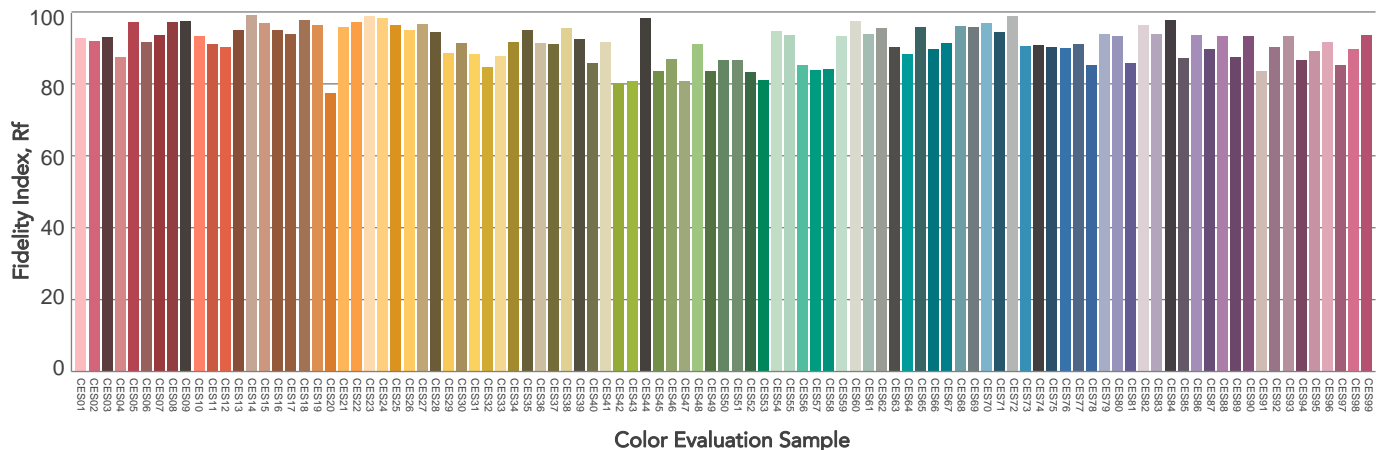
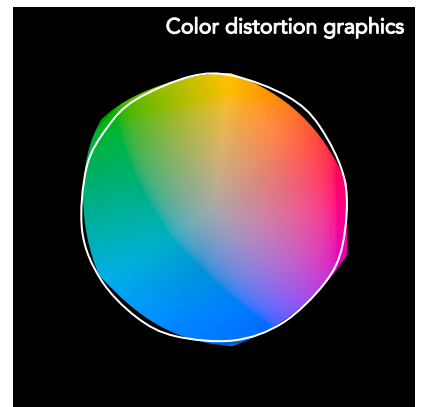
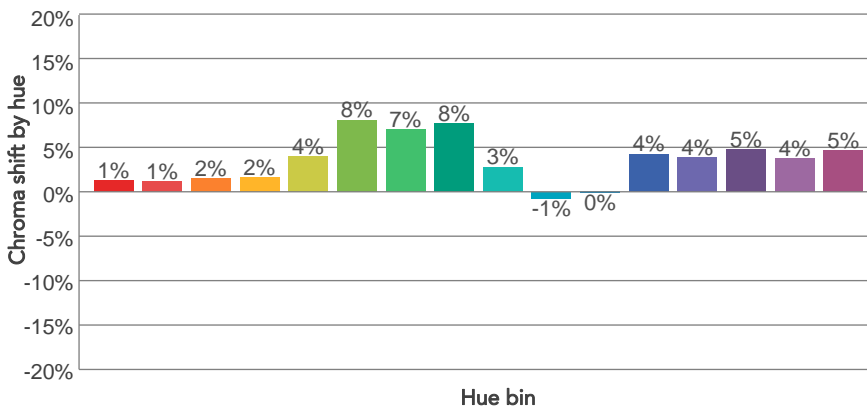
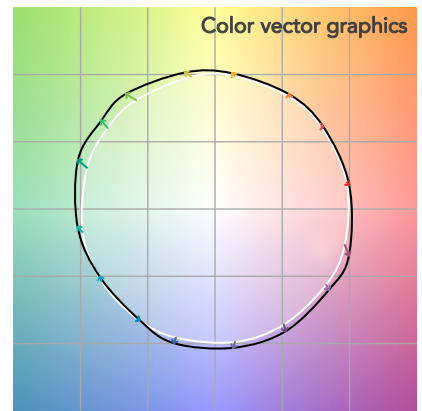
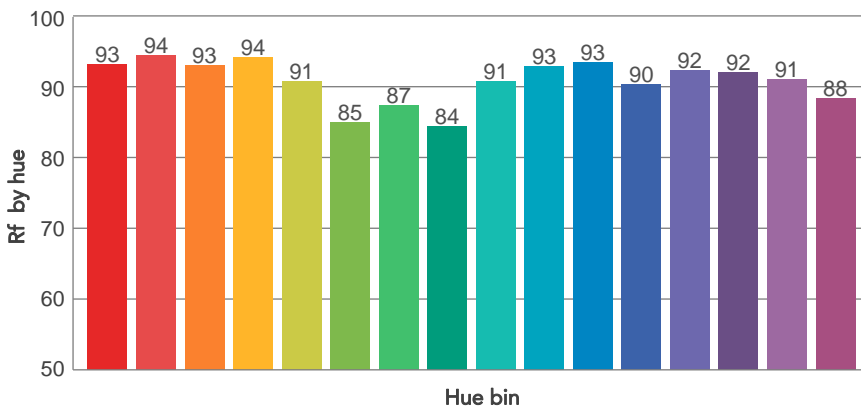
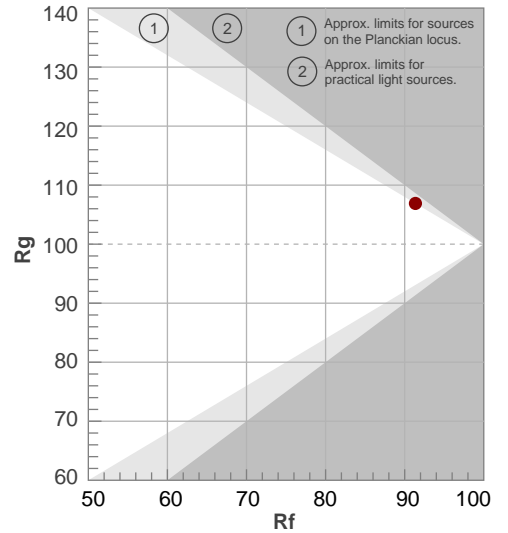
Color temperature	Color rendering index	Red component	Color fidelity	Color gamut	Color quality scale	Television lighting index	Color coordinate cie 1931	Color coordinate cie 1931	Color deviation from black body
CCT	CRI	CRI R9	TM30 Rf	TM30 Rg	CQS	TLCI	x	y	Δuv
3231 K	93,0	91,1	91,4	106,9	92,6	83	0,421	0,396	-0,0007

TM30 DETAILS

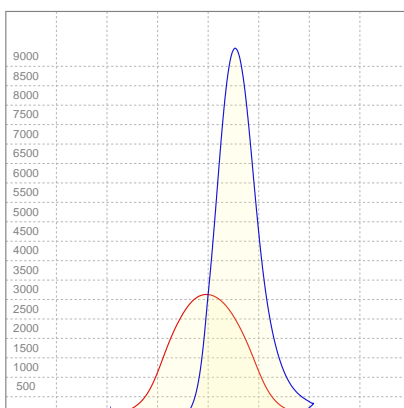
Rf 91,4
Fidelity index Rf

Rg 106,9
Gammut index

Hue Bin	R _f	Graphic shifts (%)	
		Chroma	Hue
1	93	1%	-2%
2	94	1%	-1%
3	93	2%	1%
4	94	2%	2%
5	91	4%	4%
6	85	8%	4%
7	87	7%	-2%
8	84	8%	-4%
9	91	3%	-5%
10	93	-1%	-3%
11	93	0%	2%
12	90	4%	-1%
13	92	4%	-2%
14	92	5%	-2%
15	91	4%	-2%
16	88	5%	-7%



LINEAR DISTRIBUTION DIAGRAM

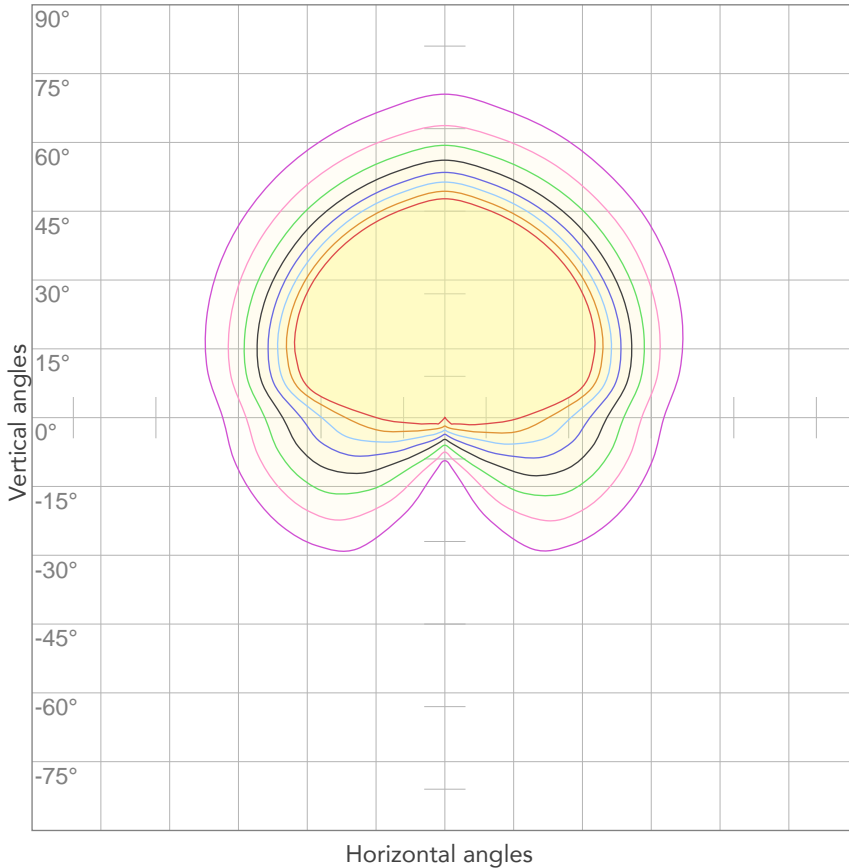


ELECTRICAL SPECIFICATIONS

Input voltage	Input current	Input power	Effeciency
226V	0,424A	88,9W	89lm/W

Power Fc
0,95

ISO CANDELA DIAGRAM



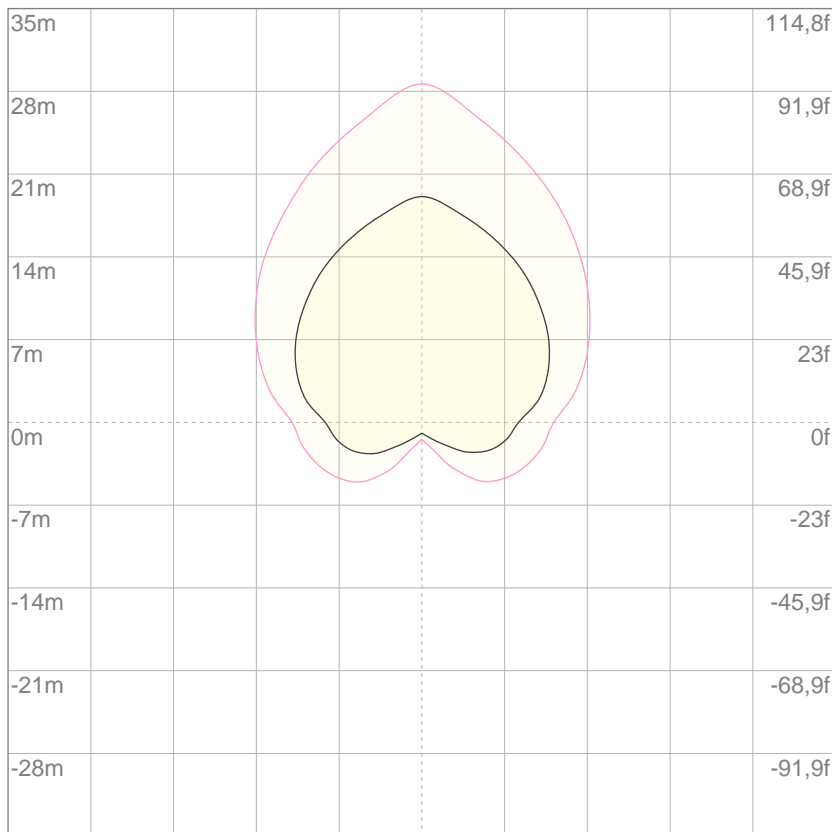
10%	313 cd
20%	625 cd
30%	938 cd
40%	1251 cd
50%	1563 cd
60%	1876 cd
70%	2189 cd
80%	2501 cd

Conditions:

Number of c-planes: 4

Candela at center: 3127 cd

ISO LUX DIAGRAM



Mounting height: 10 meters (33 feet)

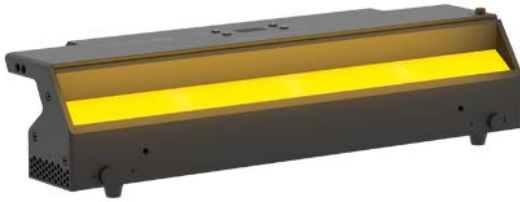
3%	0,938 lx
5%	1,56 lx
10%	3,13 lx
30%	9,38 lx
50%	15,6 lx

Conditions:

Number of c-planes: 4

Lux at center: 31,3 lx

Lux distribution on a surface when lamp is mounted at 10 meters from the surface.



Total lumen output:

8030 lm

Peak candela output:

9554 cd

Light quality:

CRI: 92,7

Color temperature:

4080 K

PRODUCT NAME:

ECL CYC050

MEASUREMENT CONDITIONS:

Beam angle:

Filter Native

Target:

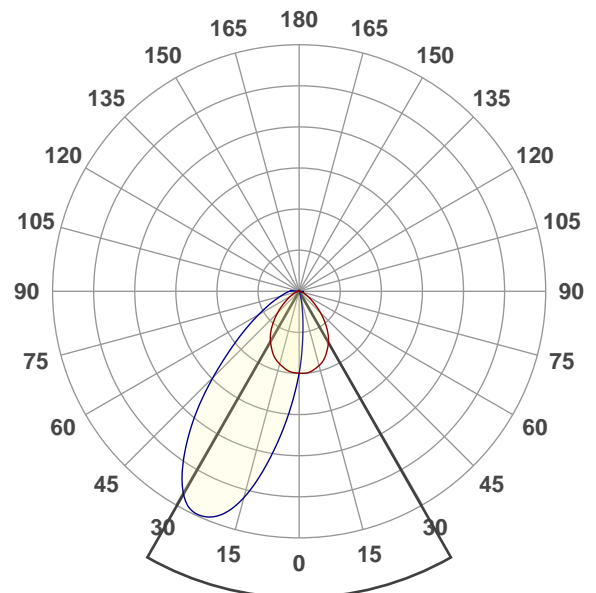
4000K

Operator:

Paolo Carvone

Date and time:

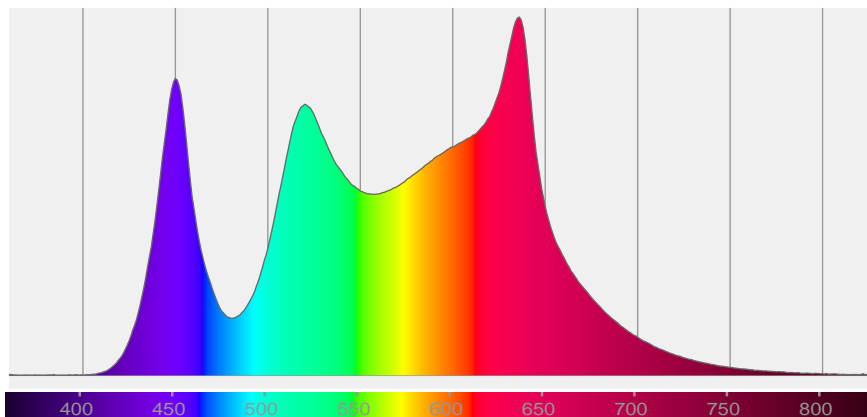
25/05/2020 15:35:08

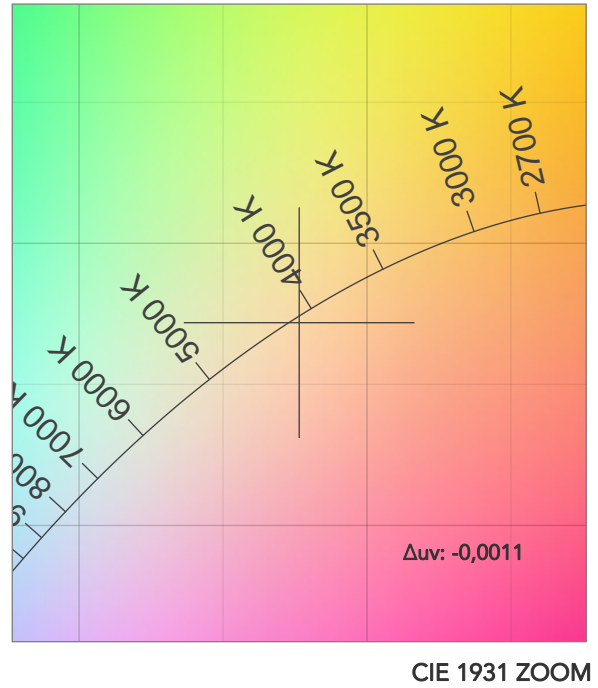
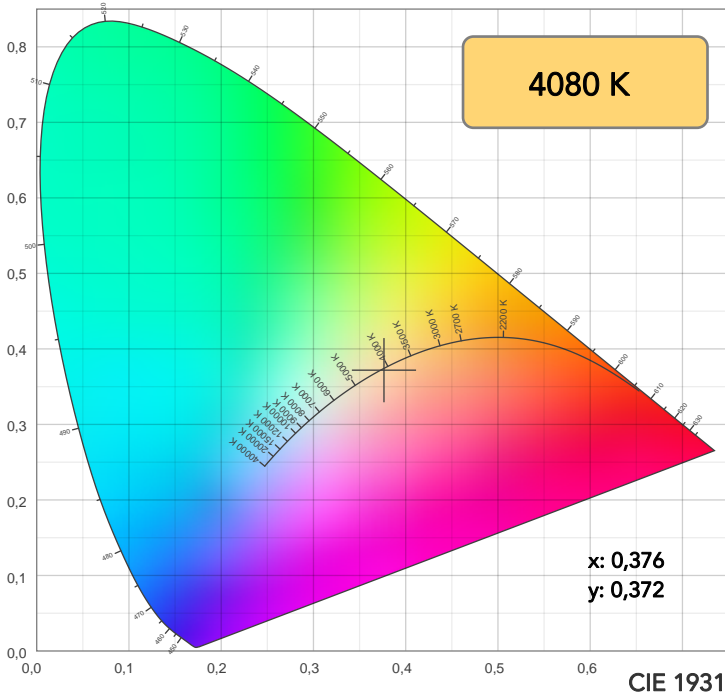


x(red curve) beam angle 50% 79.8°

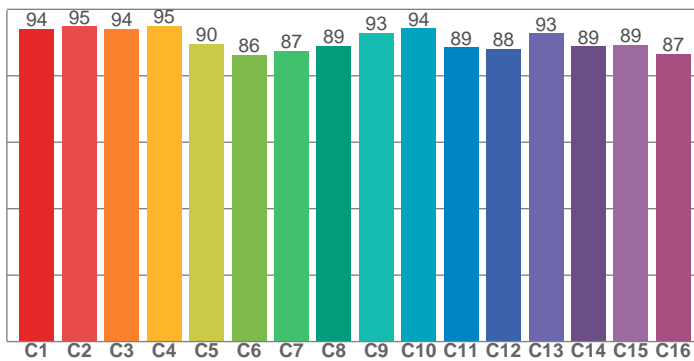
y(blue curve) beam angle 50% 40°

Spectra

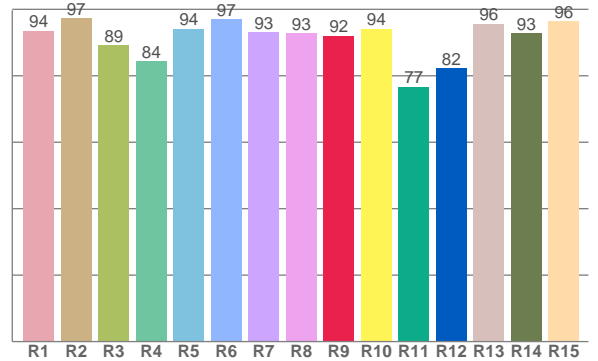




TM30: 91,1



CRI: 92,7 (R1-R8)



CRI R values, only R1-R8 are used to calculate final CRI value

R1	R2	R3	R4	R5	R6	R7	R8	R9	R10	R11	R12	R13	R14	R15
93,5	97,3	89,2	84,5	94,2	96,9	93,1	92,8	92,0	94,2	76,7	82,3	95,6	92,9	96,3

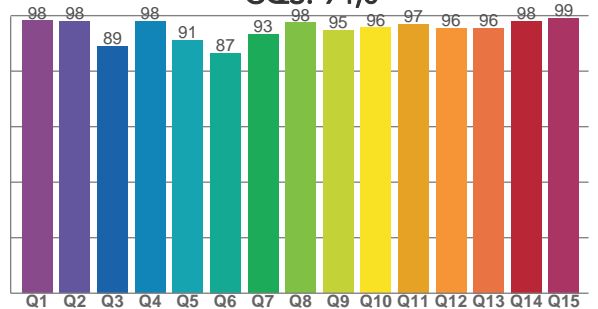
TM30 C values, 16 binned values out of total of 99 C values

C1	C2	C3	C4	C5	C6	C7	C8	C9	C10	C11	C12	C13	C14	C15	C16
94,2	94,8	94,2	95,0	89,7	86,3	87,5	88,9	92,9	94,3	88,6	88,1	92,8	88,9	89,3	86,5

CQS Q values

Q1	Q2	Q3	Q4	Q5	Q6	Q7	Q8	Q9	Q10	Q11	Q12	Q13	Q14	Q15
98,3	98,0	89,1	97,9	91,1	86,5	93,3	97,5	94,7	95,7	96,9	95,5	95,5	98,0	99,1

CQS: 94,0



COLOR PARAMETERS

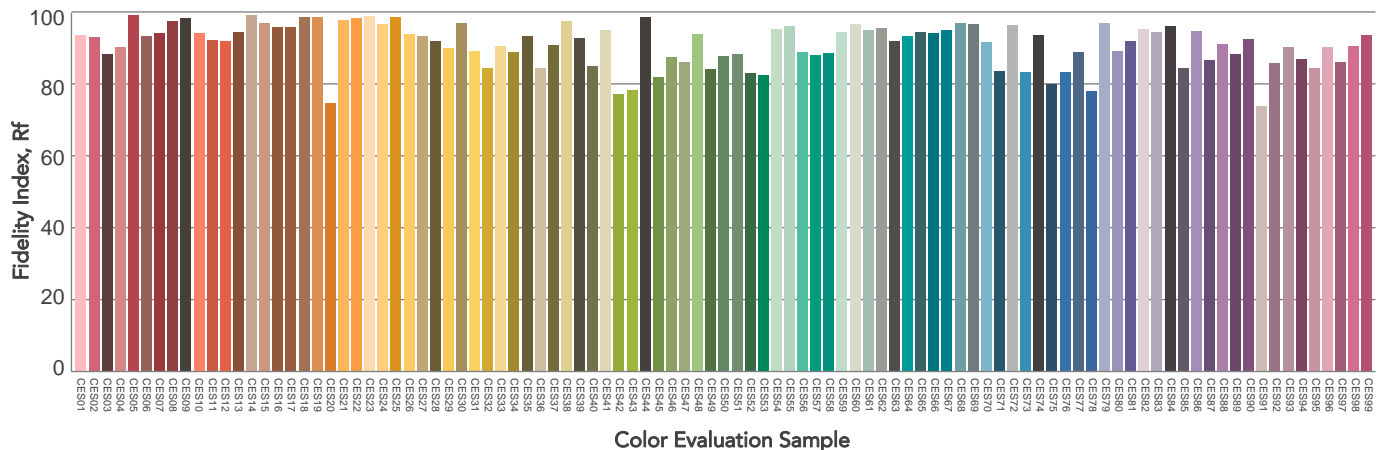
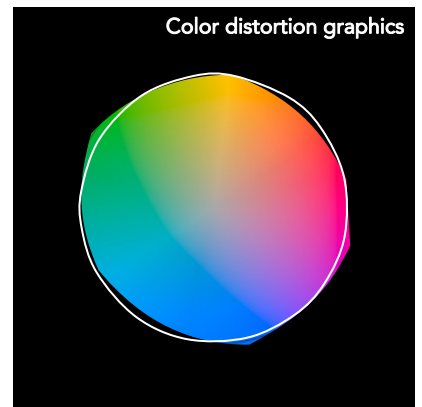
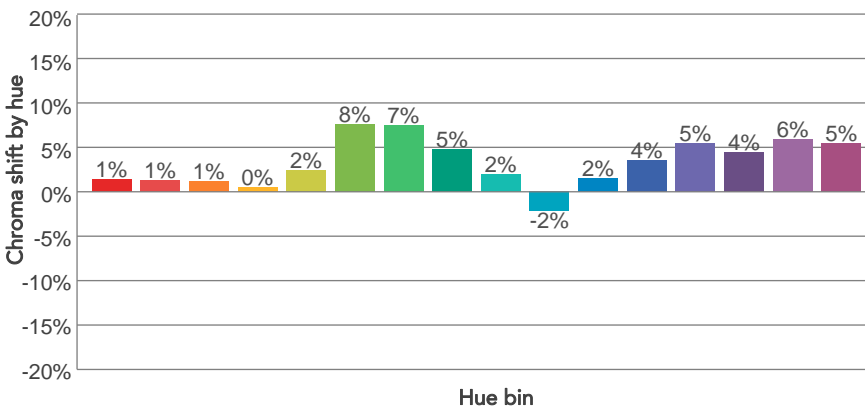
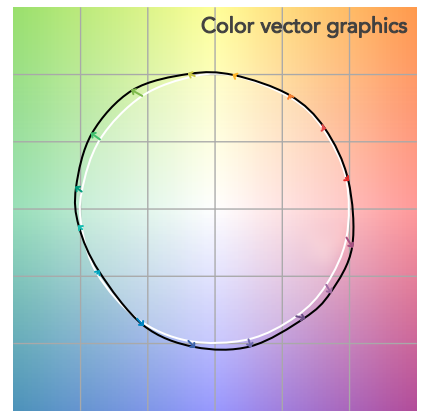
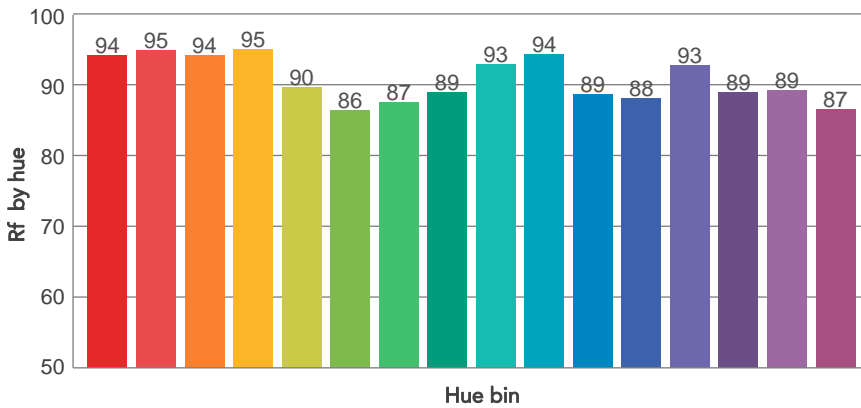
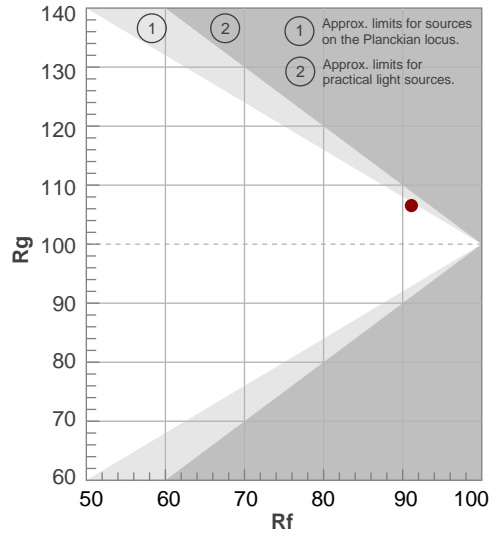
Color temperature	Color rendering index	Red component	Color fidelity	Color gamut	Color quality scale	Television lighting index	Color coordinate cie 1931	Color coordinate cie 1931	Color deviation from black body
CCT	CRI	CRI R9	TM30 Rf	TM30 Rg	CQS	TLCI	x	y	Δuv
4080 K	92,7	92,0	91,1	106,5	94,0	83	0,376	0,372	-0,0011

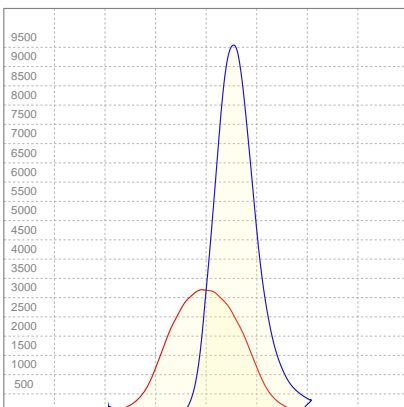
TM30 DETAILS

Rf 91,1
Fidelity index Rf

Rg 106,5
Gammut index

Hue Bin	R _f	Graphic shifts (%)	
		Chroma	Hue
1	94	1%	-2%
2	95	1%	-1%
3	94	1%	2%
4	95	0%	2%
5	90	2%	4%
6	86	8%	4%
7	87	7%	0%
8	89	5%	-2%
9	93	2%	-3%
10	94	-2%	-1%
11	89	2%	6%
12	88	4%	5%
13	93	5%	1%
14	89	4%	4%
15	89	6%	-3%
16	87	5%	-6%

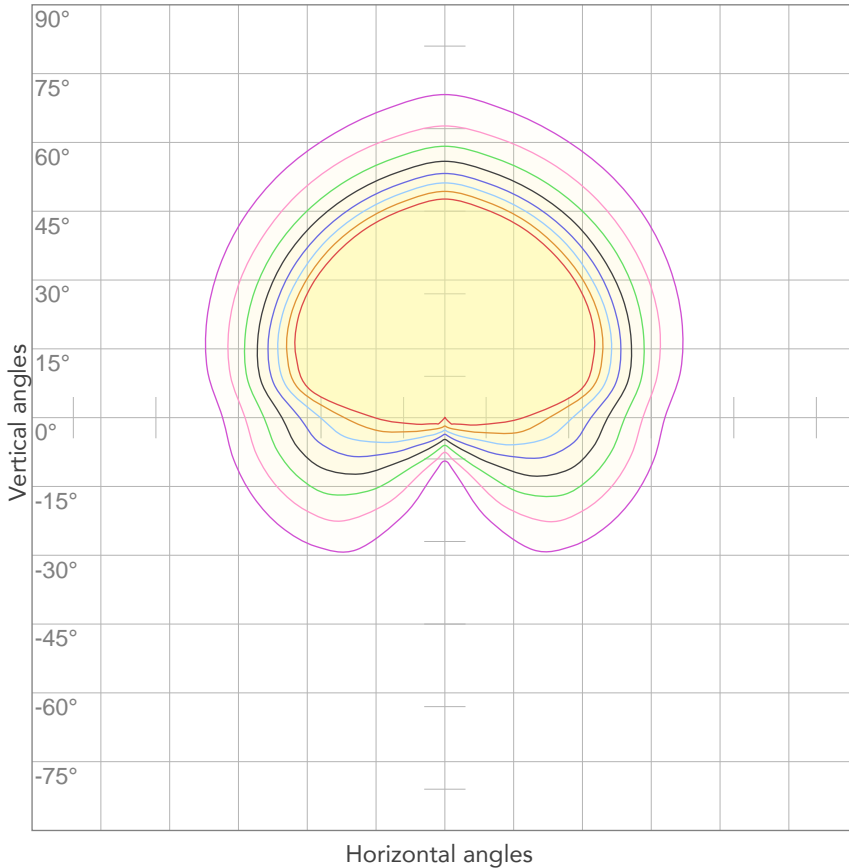


LINEAR DISTRIBUTION DIAGRAM

ELECTRICAL SPECIFICATIONS

Input voltage	Input current	Input power	Effeciency
226V	0,438A	91,8W	87lm/W

Power Fc
0,95

ISO CANDELA DIAGRAM



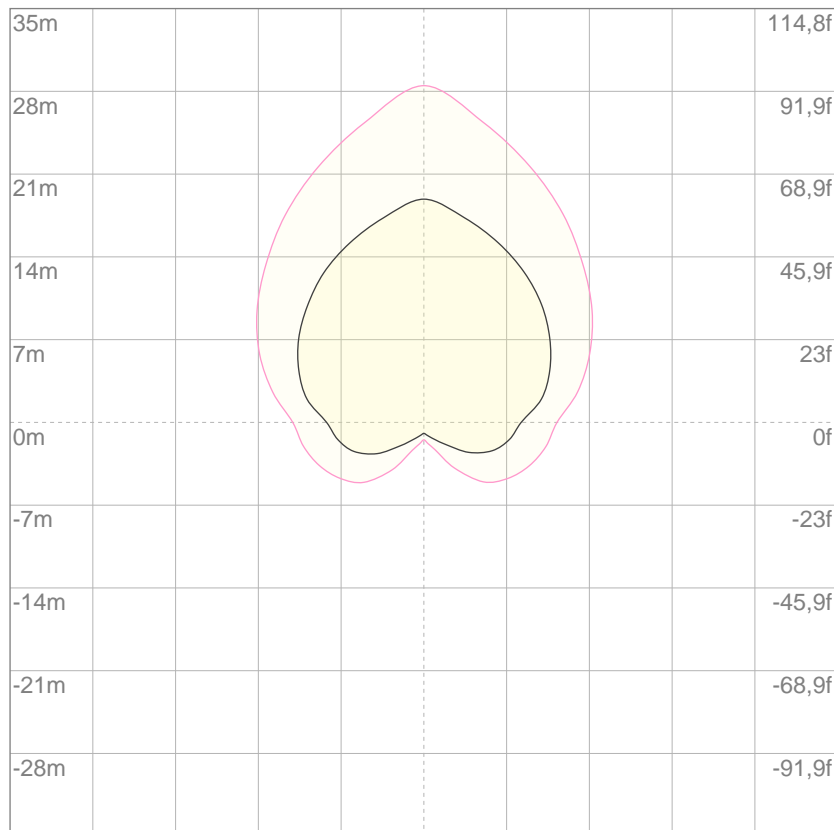
10%	319 cd
20%	638 cd
30%	957 cd
40%	1276 cd
50%	1595 cd
60%	1914 cd
70%	2233 cd
80%	2552 cd

Conditions:

Number of c-planes: 4

Candela at center: 3190 cd

ISO LUX DIAGRAM



3%	0,957 lx
5%	1,60 lx
10%	3,19 lx
30%	9,57 lx
50%	16,0 lx

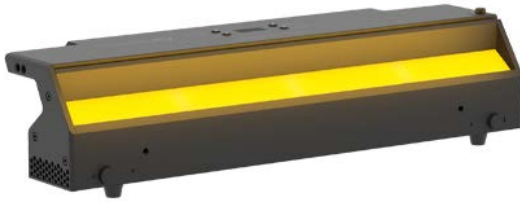
Conditions:

Number of c-planes: 4

Lux at center: 31,9 lx

Lux distribution on a surface when lamp is mounted at 10 meters from the surface.

Mounting height: 10 meters (33 feet)



Total lumen output:

8371 lm

Peak candela output:

9923 cd

Light quality:

CRI: 91,2

Color temperature:

5837 K

PRODUCT NAME:

ECL CYC050

MEASUREMENT CONDITIONS:

Beam angle:

Filter Native

Target:

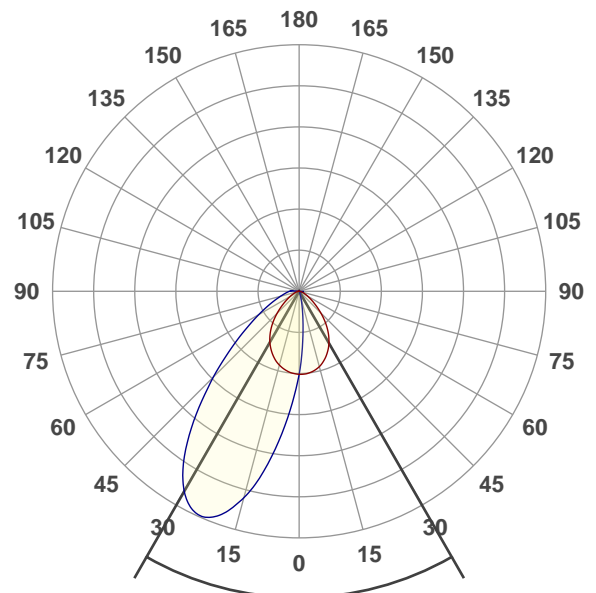
5600K

Operator:

Paolo Carvone

Date and time:

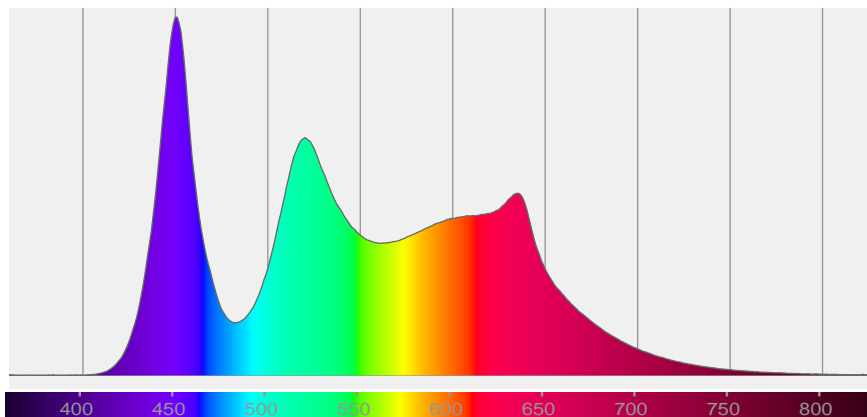
25/05/2020 15:38:28

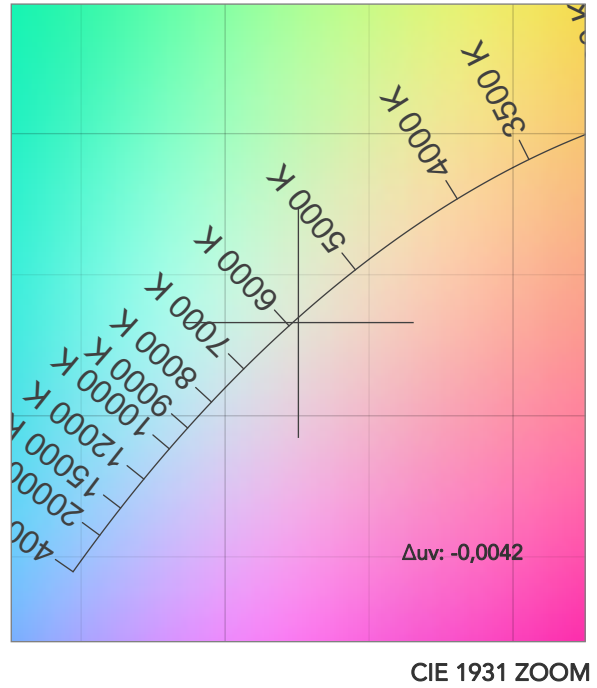
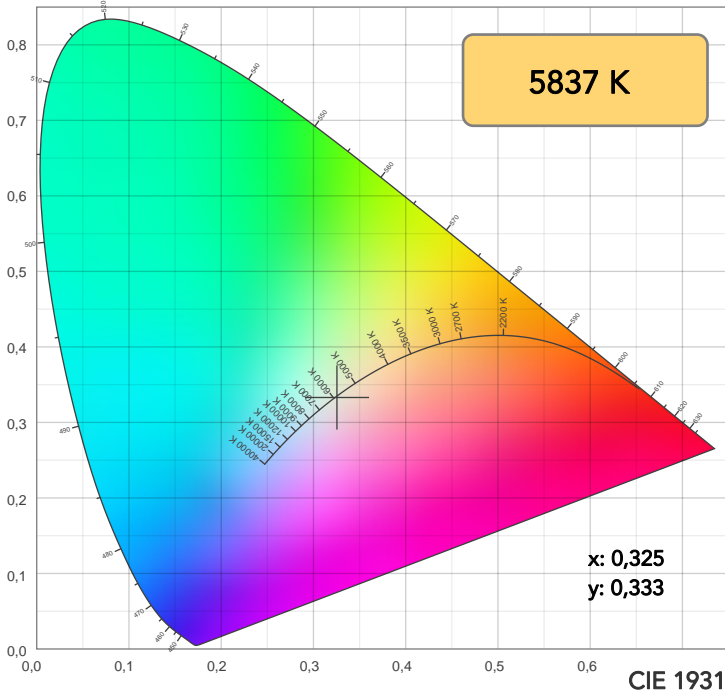


x(red curve) beam angle 50% 79.8°

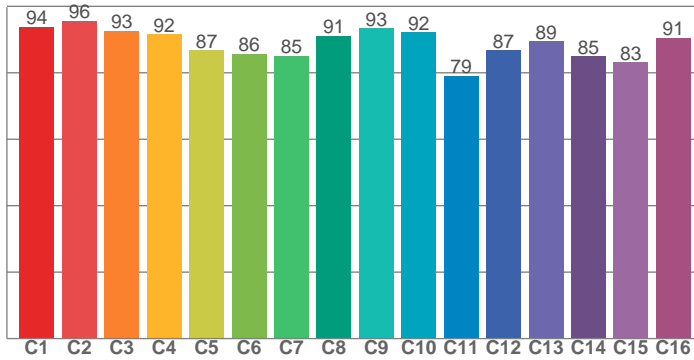
y(blue curve) beam angle 50% 40°

Spectra

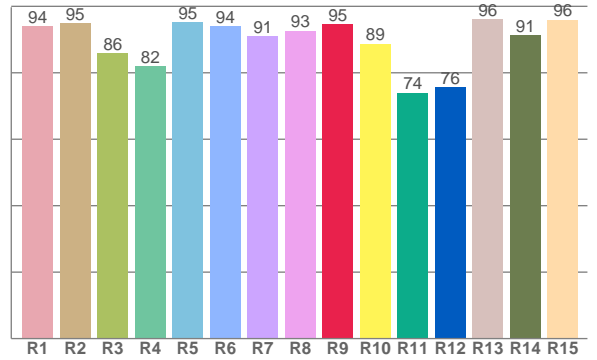




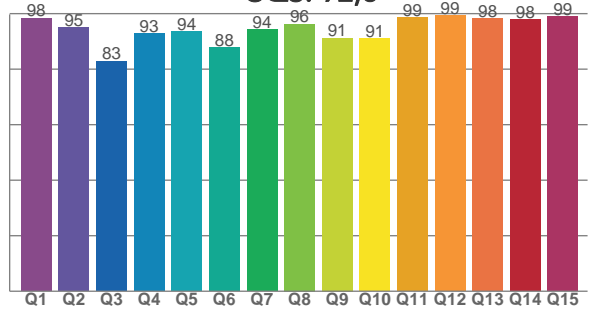
TM30: 88,8



CRI: 91,2 (R1-R8)



CQS: 92,8



CRI R values, only R1-R8 are used to calculate final CRI value

R1	R2	R3	R4	R5	R6	R7	R8	R9	R10	R11	R12	R13	R14	R15
93,9	94,8	85,9	82,0	95,3	94,0	91,0	92,6	94,6	88,7	74,0	75,6	96,2	91,3	95,9

TM30 C values, 16 binned values out of total of 99 C values

C1	C2	C3	C4	C5	C6	C7	C8	C9	C10	C11	C12	C13	C14	C15	C16
93,9	95,7	92,5	91,6	86,8	85,7	85,1	91,0	93,3	92,1	79,2	86,7	89,5	84,9	83,1	90,6

CQS Q values

Q1	Q2	Q3	Q4	Q5	Q6	Q7	Q8	Q9	Q10	Q11	Q12	Q13	Q14	Q15
98,3	95,0	82,8	92,8	93,5	87,8	94,2	96,3	91,3	91,0	98,6	99,3	98,2	97,9	99,0

COLOR PARAMETERS

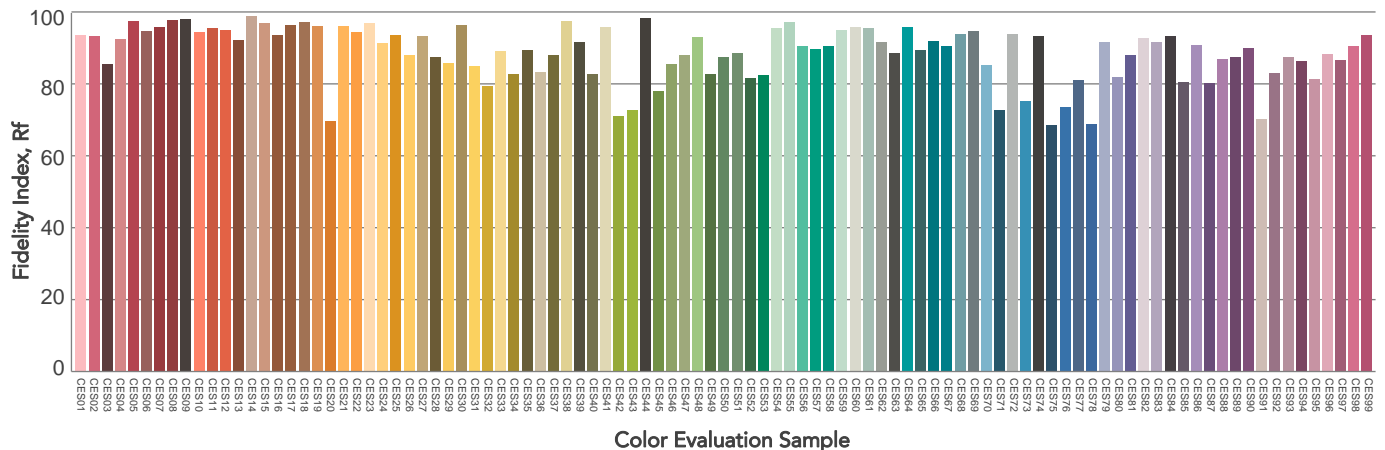
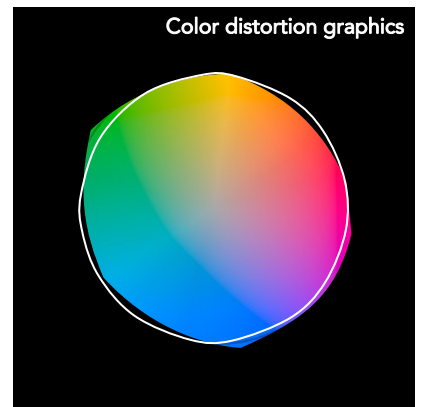
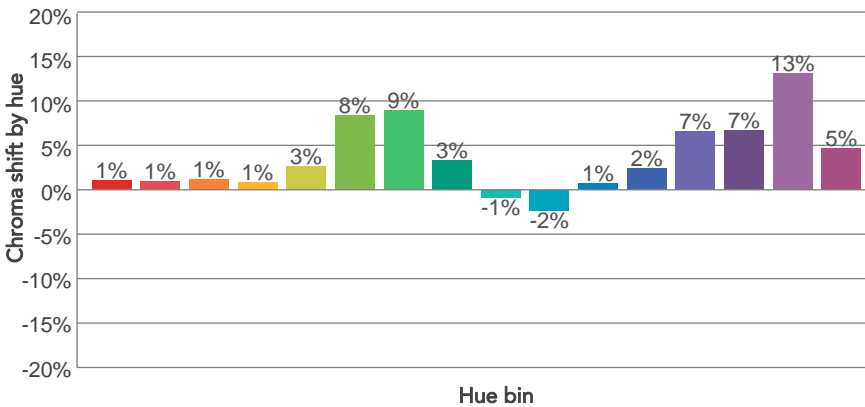
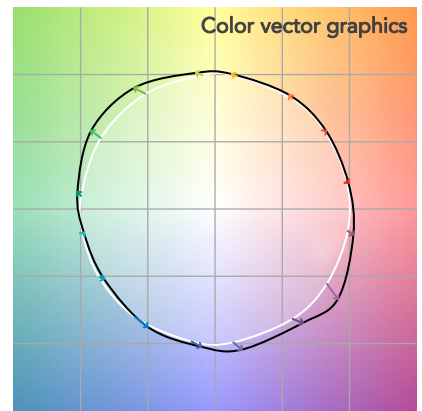
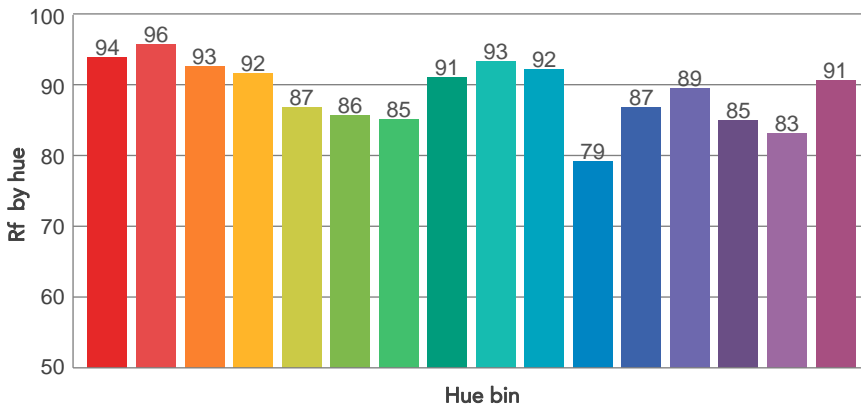
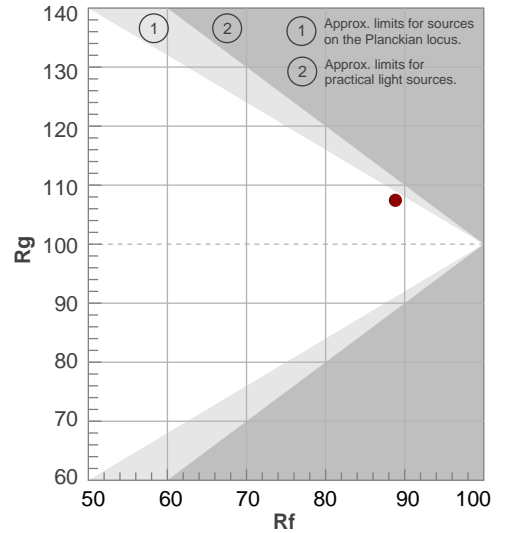
Color temperature	Color rendering index	Red component	Color fidelity	Color gamut	Color quality scale	Television lighting index	Color coordinate cie 1931	Color coordinate cie 1931	Color deviation from black body
CCT	CRI	CRI R9	TM30 Rf	TM30 Rg	CQS	TLCI	x	y	Δuv
5837 K	91,2	94,6	88,8	107,4	92,8	87	0,325	0,333	-0,0042

TM30 DETAILS

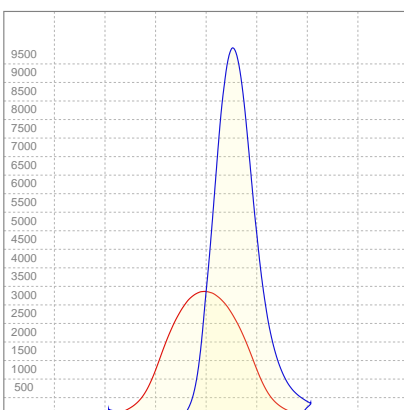
Rf 88,8
Fidelity index Rf

Rg 107,4
Gammut index

Hue Bin	R _f	Graphic shifts (%)	
		Chroma	Hue
1	94	1%	-2%
2	96	1%	0%
3	93	1%	3%
4	92	1%	4%
5	87	3%	5%
6	86	8%	4%
7	85	9%	-1%
8	91	3%	-2%
9	93	-1%	-1%
10	92	-2%	3%
11	79	1%	12%
12	87	2%	8%
13	89	7%	5%
14	85	7%	5%
15	83	13%	-5%
16	91	5%	-2%



LINEAR DISTRIBUTION DIAGRAM

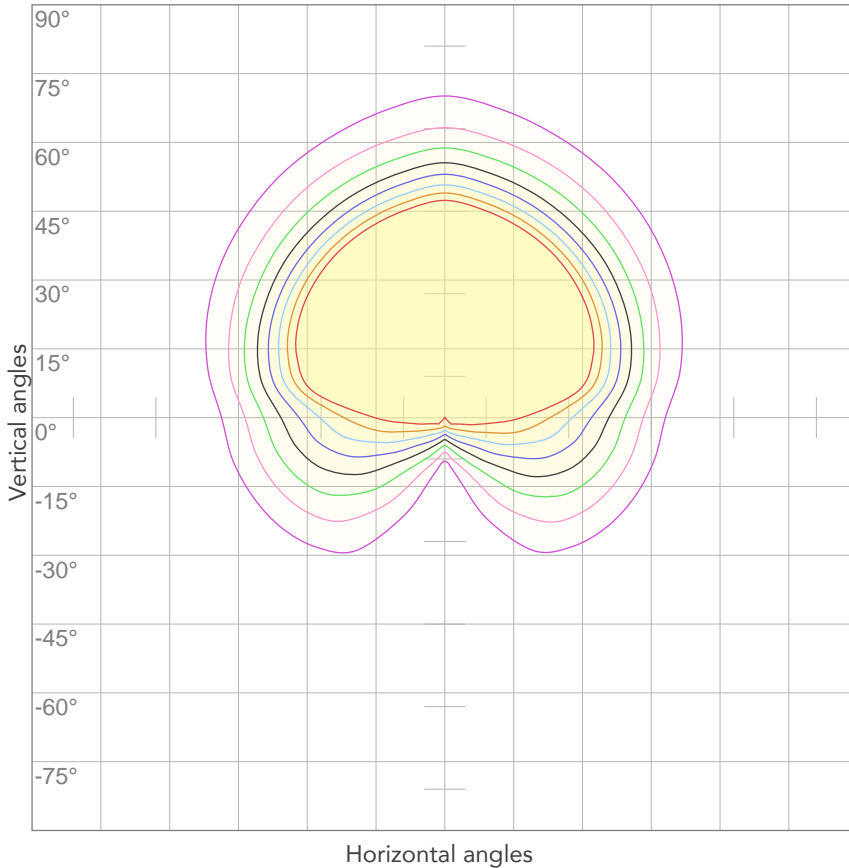


ELECTRICAL SPECIFICATIONS

Input voltage	Input current	Input power	Effeciency
226V	0,476A	100W	84lm/W

Powerr Fc
0,95

ISO CANDELA DIAGRAM



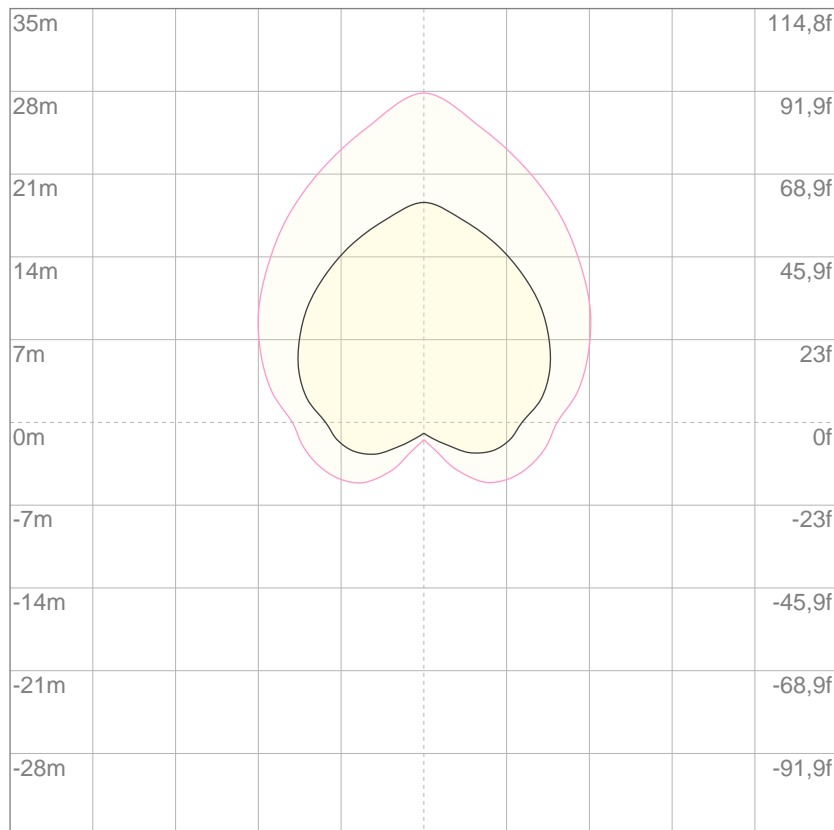
10%	336 cd
20%	672 cd
30%	1008 cd
40%	1344 cd
50%	1680 cd
60%	2016 cd
70%	2352 cd
80%	2689 cd

Conditions:

Number of c-planes: 4

Candela at center: 3361 cd

ISO LUX DIAGRAM



3%	1,01 lx
5%	1,68 lx
10%	3,36 lx
30%	10,1 lx
50%	16,8 lx

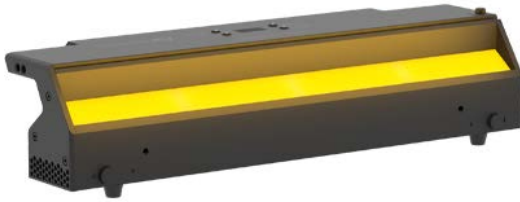
Conditions:

Number of c-planes: 4

Lux at center: 33,6 lx

Lux distribution on a surface when lamp is mounted at 10 meters from the surface.

Mounting height: 10 meters (33 feet)



Total lumen output:

8416 lm

Peak candela output:

10013 cd

Light quality:

CRI: 91,1

Color temperature:

6340 K

PRODUCT NAME:

ECL CYC050

MEASUREMENT CONDITIONS:

Beam angle:

Filter Native

Target:

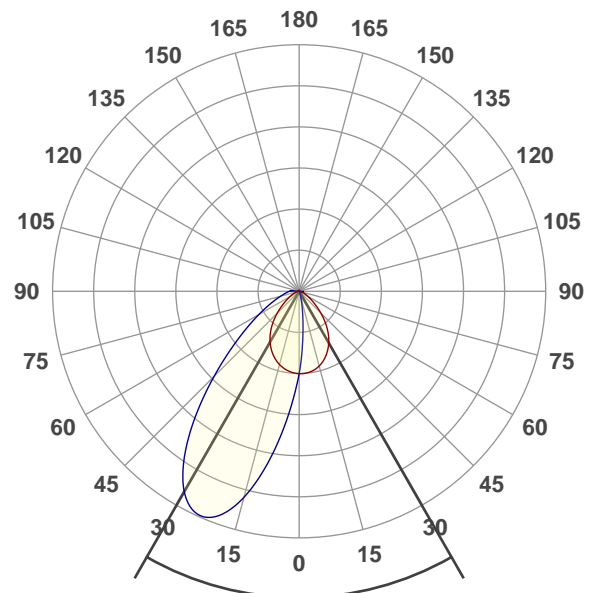
6000K

Operator:

Paolo Carvone

Date and time:

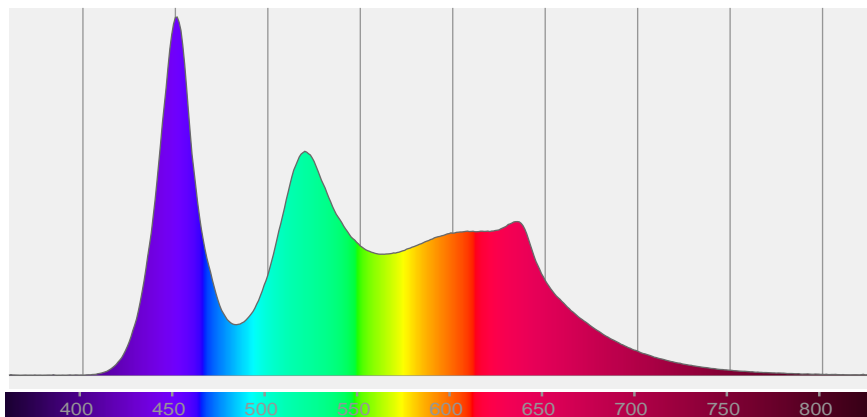
25/05/2020 15:41:04

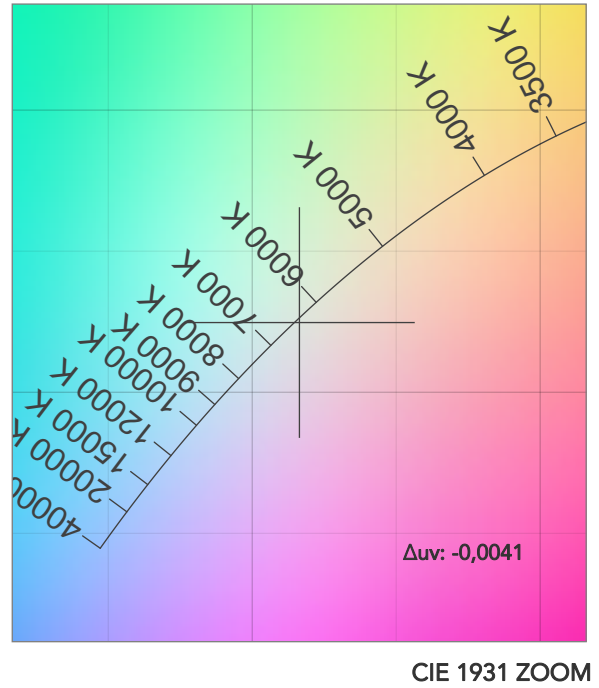
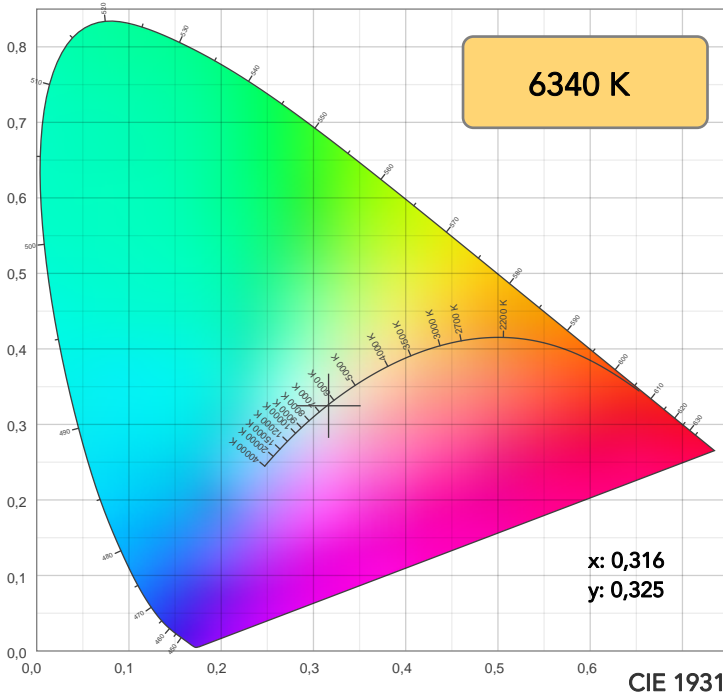


x(red curve) beam angle 50% 79.8°

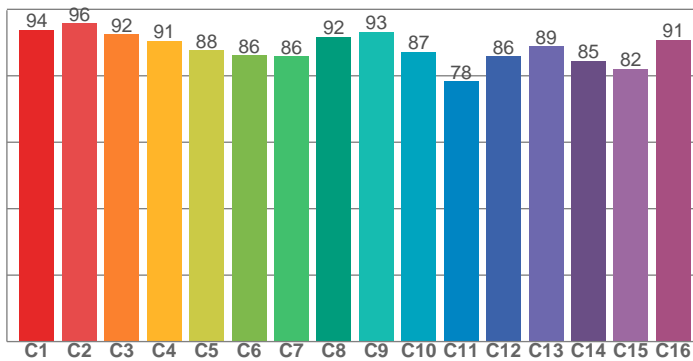
y(blue curve) beam angle 50% 40°

Spectra

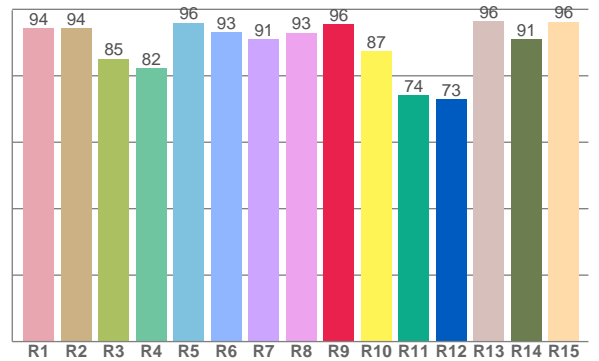




TM30: 88,5



CRI: 91,1 (R1-R8)



CRI R values, only R1-R8 are used to calculate final CRI value

R1	R2	R3	R4	R5	R6	R7	R8	R9	R10	R11	R12	R13	R14	R15
94,2	94,4	85,2	82,3	96,0	93,1	91,0	93,0	95,5	87,4	74,2	73,0	96,5	91,0	96,3

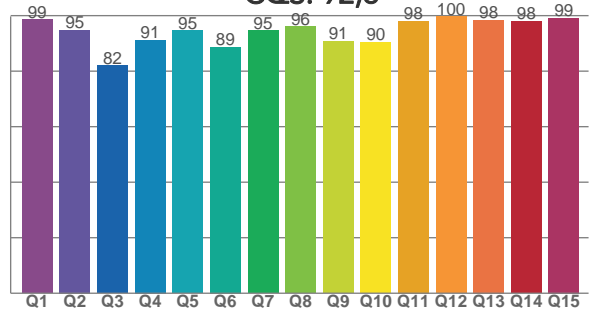
TM30 C values, 16 binned values out of total of 99 C values

C1	C2	C3	C4	C5	C6	C7	C8	C9	C10	C11	C12	C13	C14	C15	C16
93,9	95,8	92,5	90,6	87,7	86,1	85,8	91,7	93,2	87,1	78,3	85,8	88,8	84,6	82,0	90,8

CQS Q values

Q1	Q2	Q3	Q4	Q5	Q6	Q7	Q8	Q9	Q10	Q11	Q12	Q13	Q14	Q15
98,6	94,9	82,0	91,3	94,6	88,7	94,6	96,1	90,8	90,4	98,0	99,6	98,4	97,9	99,2

CQS: 92,6



COLOR PARAMETERS

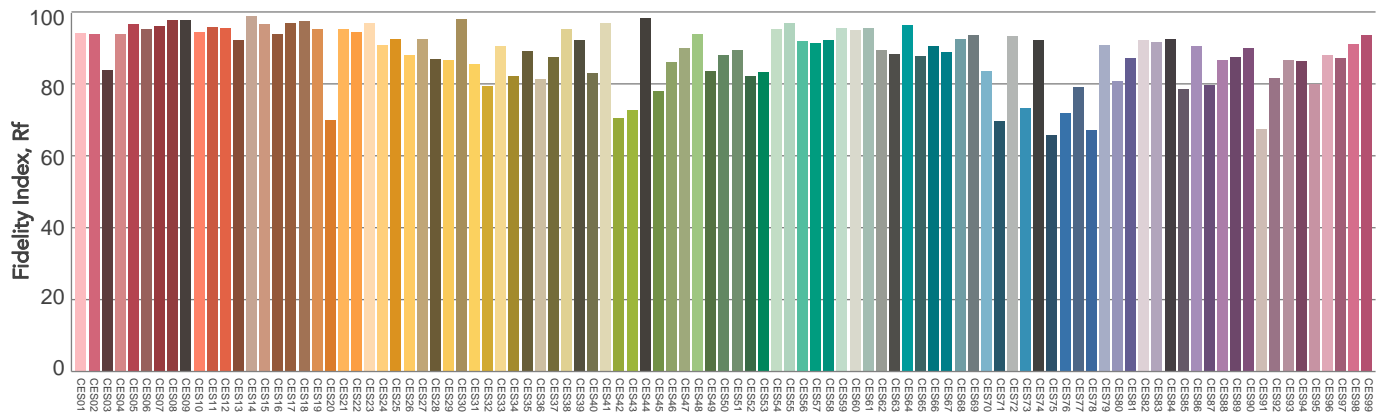
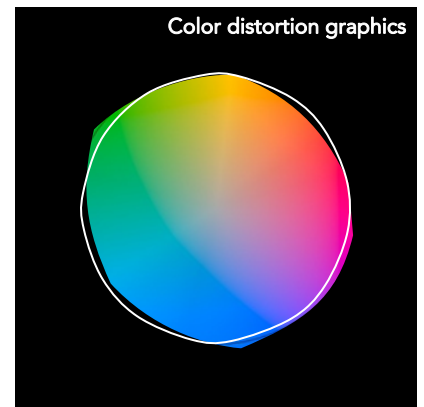
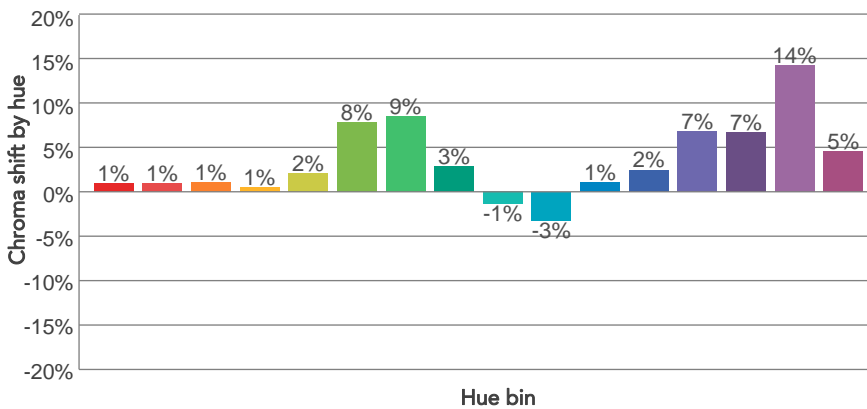
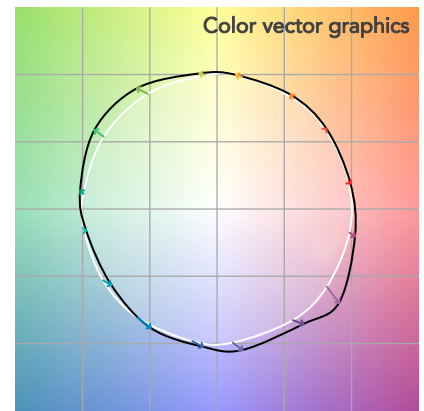
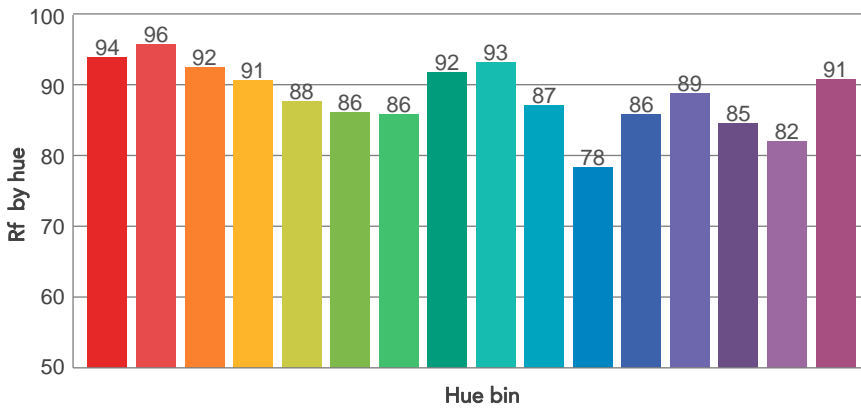
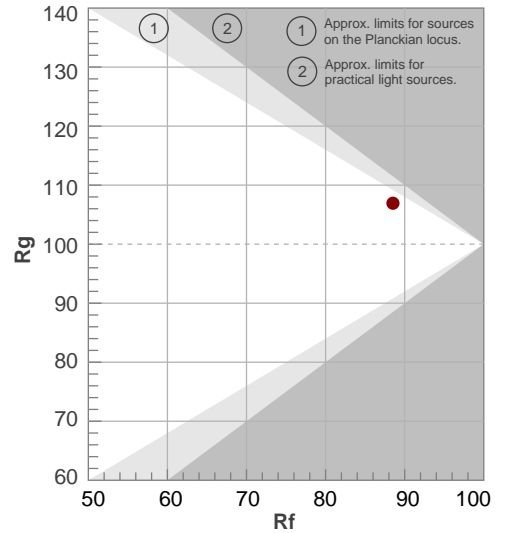
Color temperature	Color rendering index	Red component	Color fidelity	Color gamut	Color quality scale	Television lighting index	Color coordinate cie 1931	Color coordinate cie 1931	Color deviation from black body
CCT	CRI	CRI R9	TM30 Rf	TM30 Rg	CQS	TLCI	x	y	Δuv
6340 K	91,1	95,5	88,5	106,9	92,6	88	0,316	0,325	-0,0041

TM30 DETAILS

Rf 88,5
Fidelity index Rf

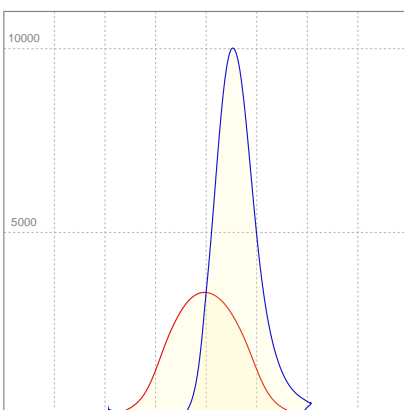
Rg 106,9
Gammut index

Hue Bin	R _f	Graphic shifts (%)	
		Chroma	Hue
1	94	1%	-2%
2	96	1%	0%
3	92	1%	3%
4	91	1%	5%
5	88	2%	4%
6	86	8%	4%
7	86	9%	0%
8	92	3%	-2%
9	93	-1%	0%
10	87	-3%	6%
11	78	1%	12%
12	86	2%	8%
13	89	7%	6%
14	85	7%	5%
15	82	14%	-5%
16	91	5%	-2%



Color Evaluation Sample

LINEAR DISTRIBUTION DIAGRAM

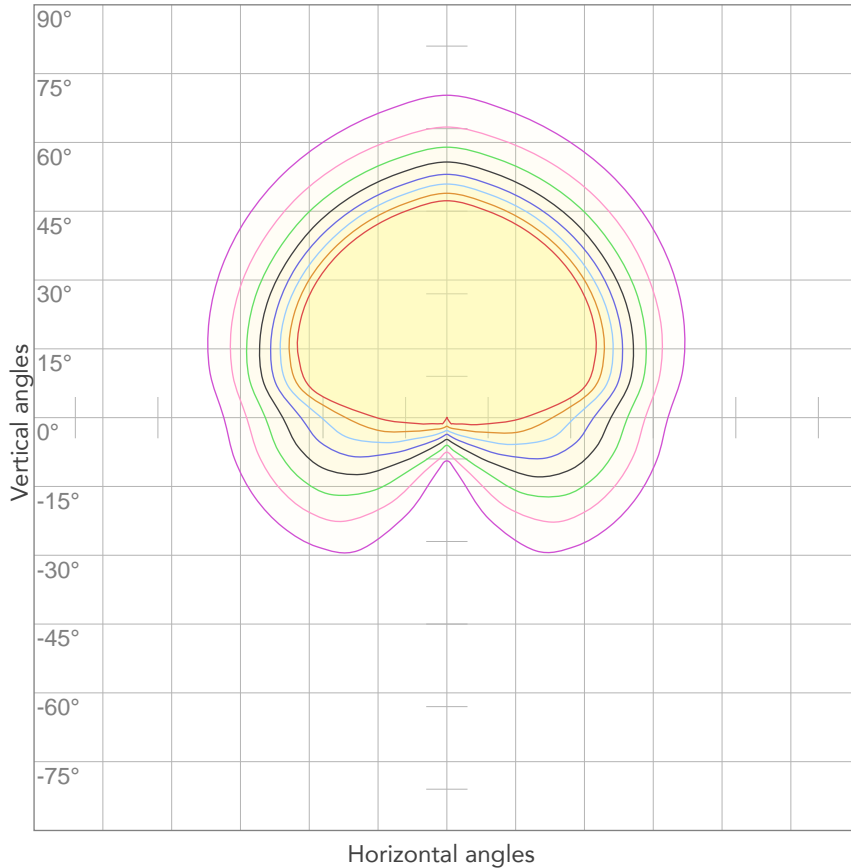


ELECTRICAL SPECIFICATIONS

Input voltage	Input current	Input power	Effeciency
226V	0,477A	100W	84lm/W

Powerr Fc
0,95

ISO CANDELA DIAGRAM



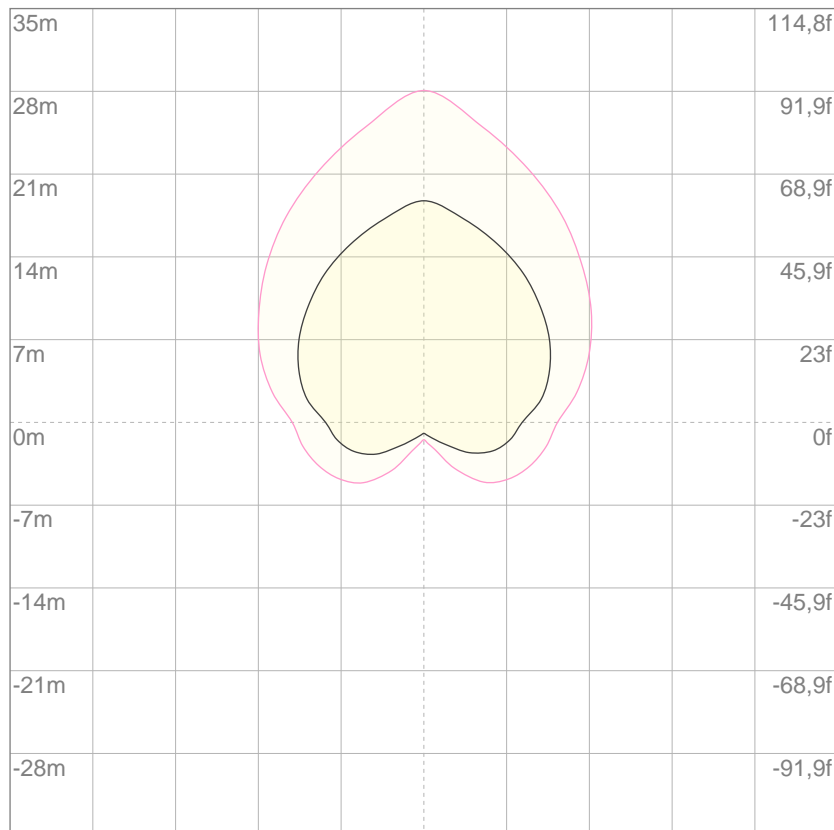
10%	337 cd
20%	673 cd
30%	1010 cd
40%	1346 cd
50%	1683 cd
60%	2019 cd
70%	2356 cd
80%	2693 cd

Conditions:

Number of c-planes: 4

Candela at center: 3366 cd

ISO LUX DIAGRAM



3%	1,01 lx
5%	1,68 lx
10%	3,37 lx
30%	10,1 lx
50%	16,8 lx

Conditions:

Number of c-planes: 4

Lux at center: 33,7 lx

Lux distribution on a surface when lamp is mounted at 10 meters from the surface.

Mounting height: 10 meters (33 feet)