

• In addition to routine checks for each use, PPE should regularly undergo a detailed inspection by a competent person.

Petzl recommends an inspection every 12 months and after any exceptional event in the life of the product.

• PPE inspection should be done with the manufacturer's instructions available for reference. Download the instructions at PETZL.COM

ASAP

B71 and B71AAA

1. Known product history

Any PPE showing unexpected degradation should be quarantined, pending a detailed inspection.

The user should:

- Provide precise information on the usage conditions.
- Report any exceptional event regarding his PPE.

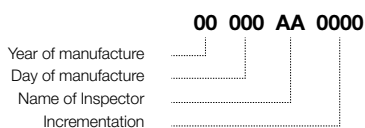
(Examples: fall or fall arrest, use or storage at extreme temperatures, modification outside manufacturer's facilities, etc.).

2. Preliminary observations

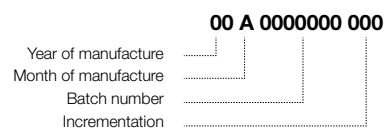
Verify the presence and legibility of the serial number and the CE mark.

Attention, the serial number code on our products is evolving. Two types of code will coexist. See below for details on each serial number code.

Code A:



Code B:

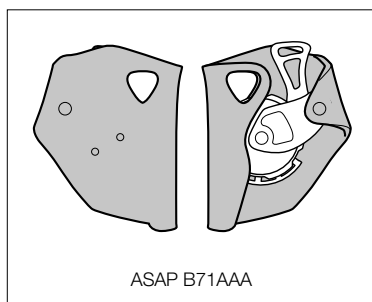
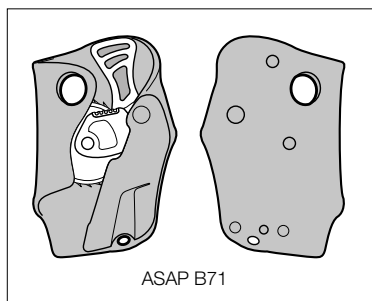


Verify that the product lifetime has not been exceeded.

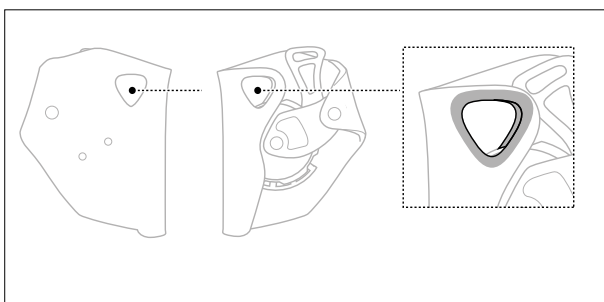
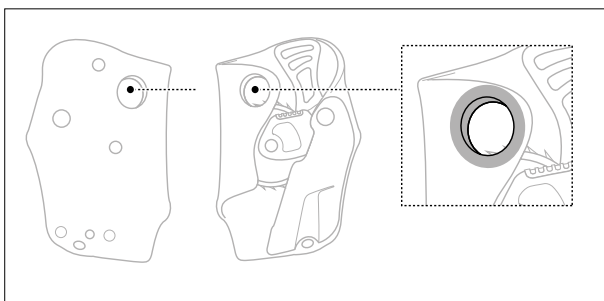
Compare with a new product to verify there are no modifications or missing parts.

3. Inspecting the frame

• Check the condition of the frame (marks, deformation, cracks, corrosion...).

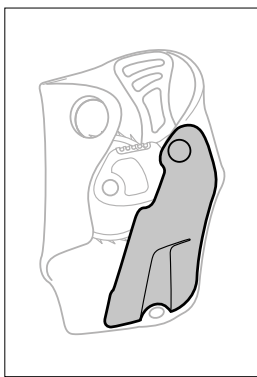
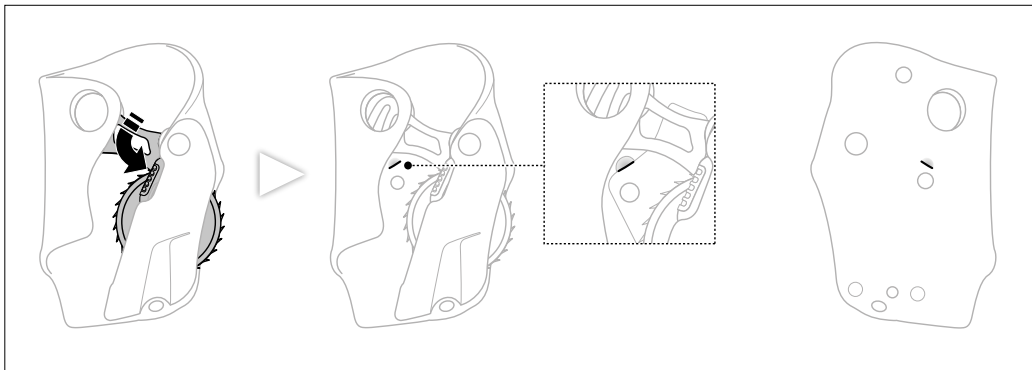


• Check the condition of the edges of the attachment hole (marks, deformation, cracks are a sign of fall arrest).



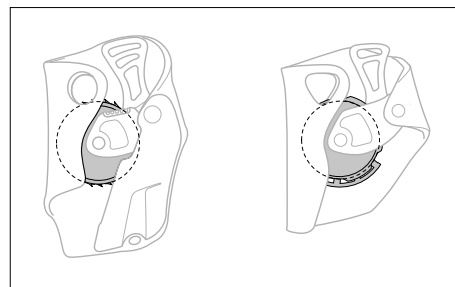
3. Inspecting the frame

- ASAP B71 only:
- Check the condition of the wheel stop (marks, deformation, cracks are a sign of fall arrest).
Check the condition of the protective cover.

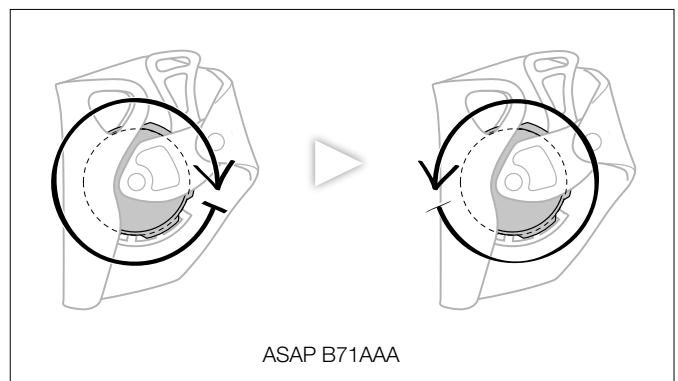
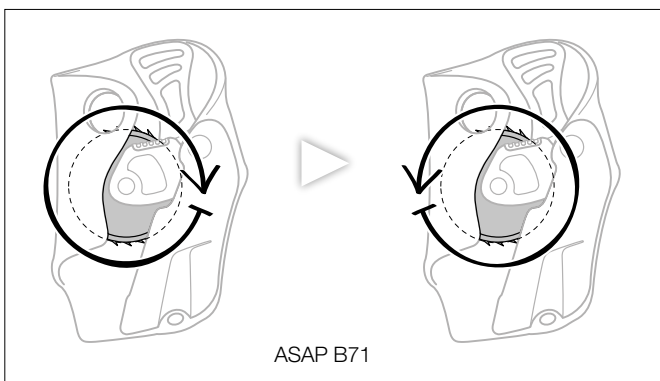


4. Inspecting the wheel

- Check the condition of the wheel (marks, deformation, cracks, corrosion...).
- Verify that all teeth are present and check their state of wear.
The wheel must not be fouled. If necessary, clean it with a brush, possibly by applying solvent with a fine brush. Avoid getting any liquid inside the mechanism.



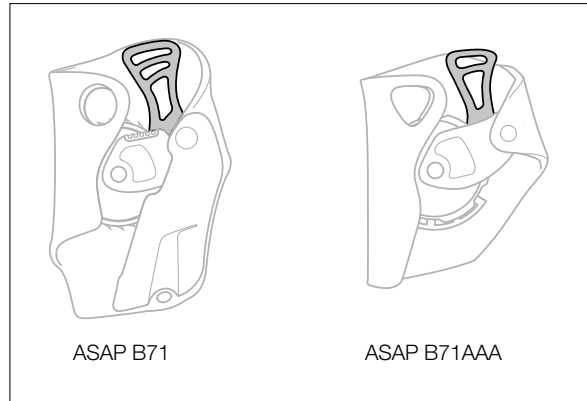
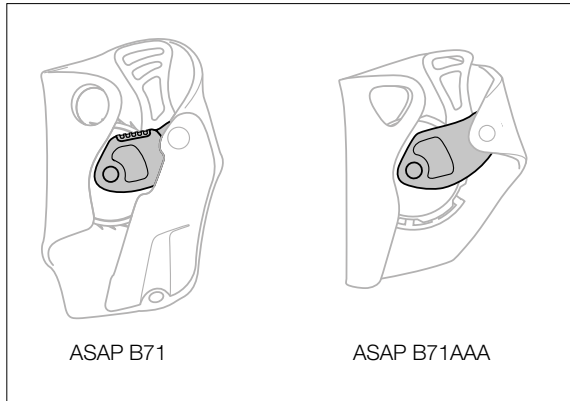
- Check the rotation of the wheel.
- Turn the wheel one complete revolution in both directions, making sure it rotates smoothly, without catching.



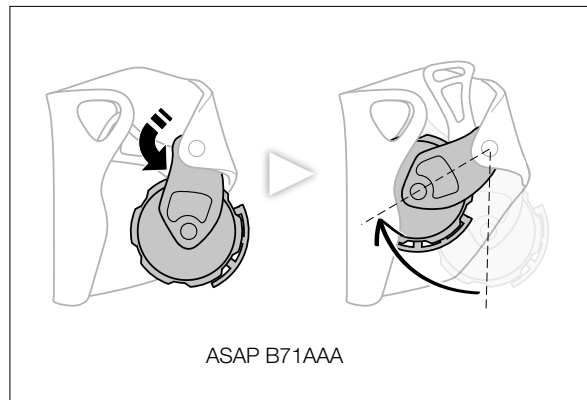
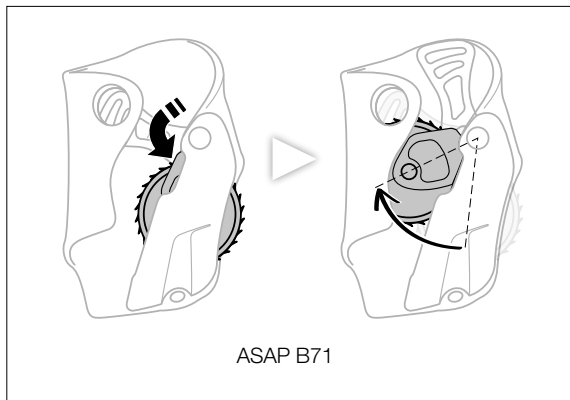
5. Checking the arm and the safety catch

- Check the condition of the arm (marks, deformation, cracks, corrosion...).

- Check the condition of the safety catch (marks, deformation, cracks are a sign of fall arrest).

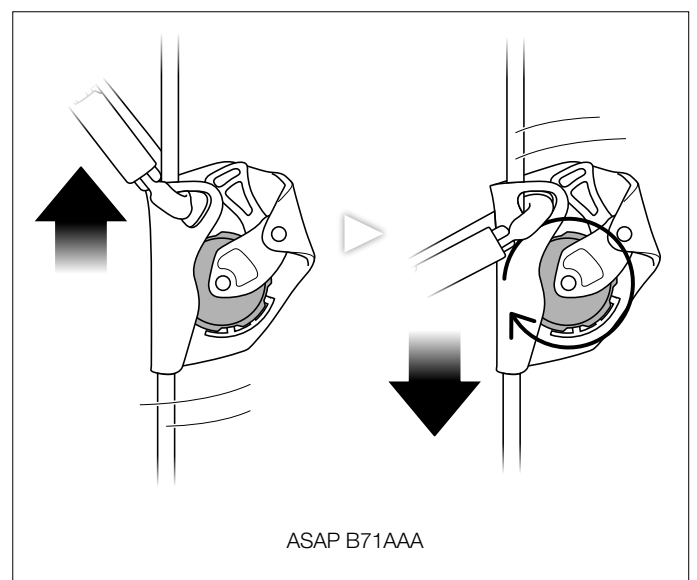
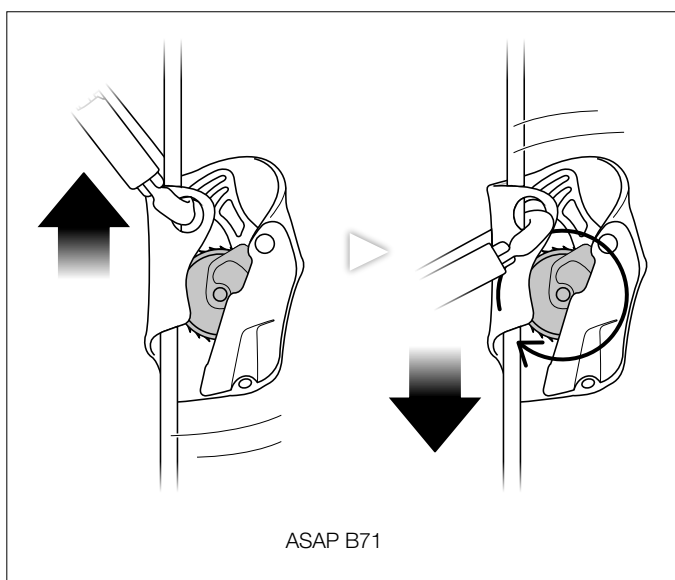


- Check the effectiveness of the arm's return spring.



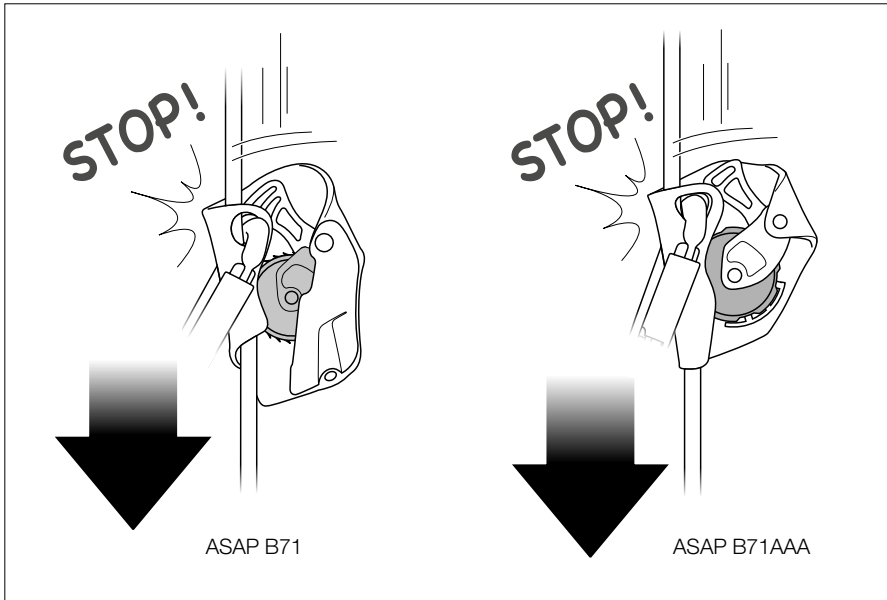
6. Function test: sliding on the rope

- Install the ASAP on a compatible rope, check that it slides properly on the rope in both directions.

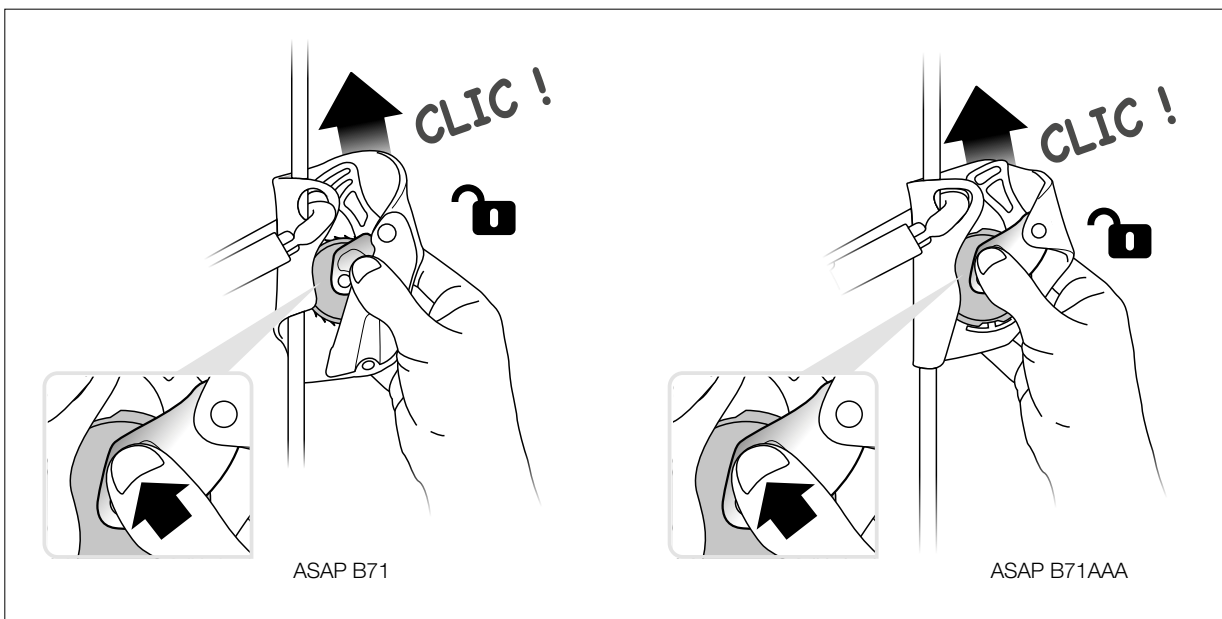


7. Function test: grabbing and releasing the rope

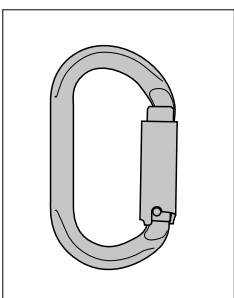
- Install the ASAP on a compatible rope; test for correct locking by pulling downward (direction of a fall).



- After locking, verify that releasing is normally carried out.



8. Checking the condition of the OK TL connector



- For connector inspection, see the inspection form for your connector model at petzl.com.