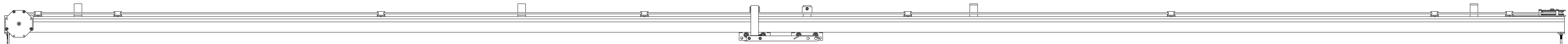
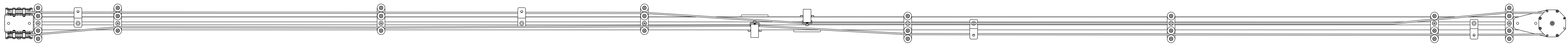
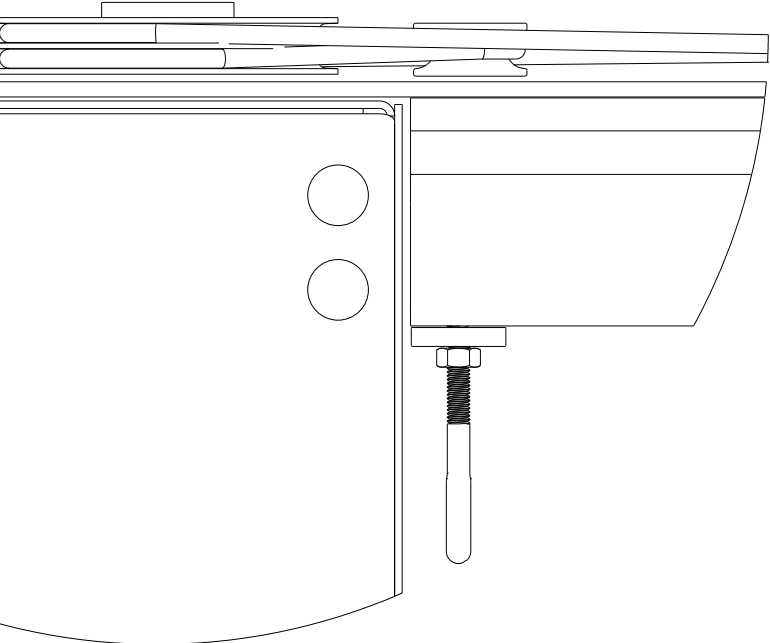
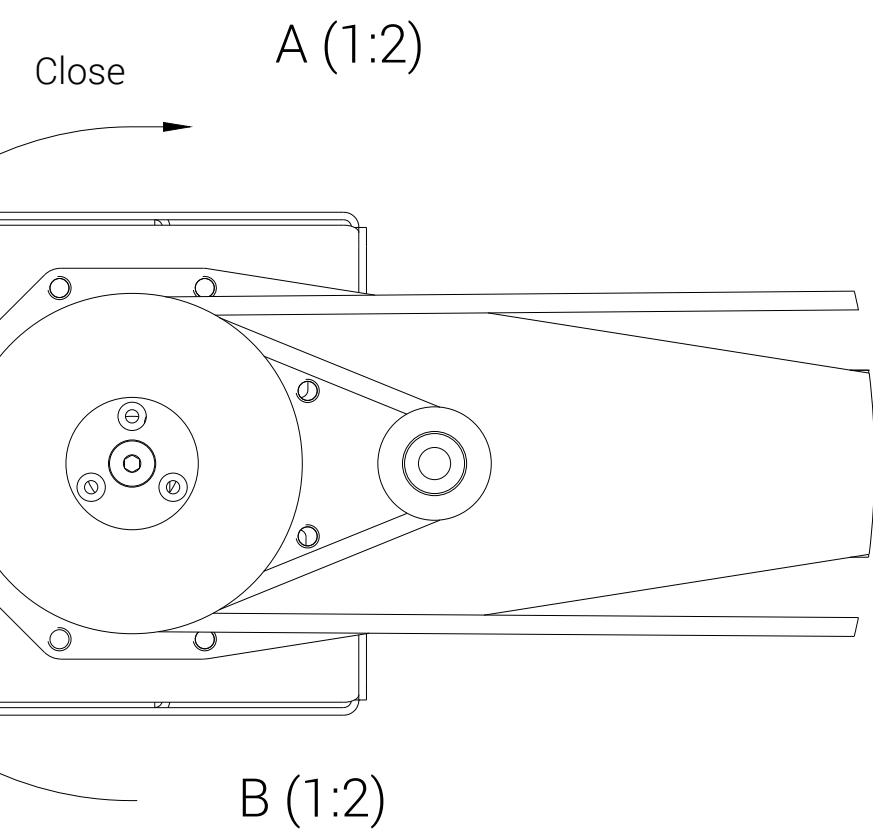
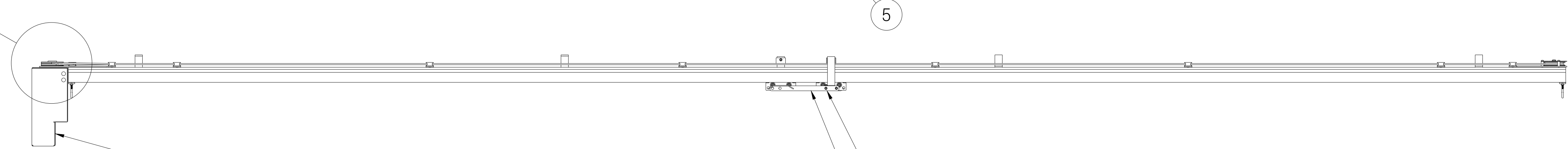
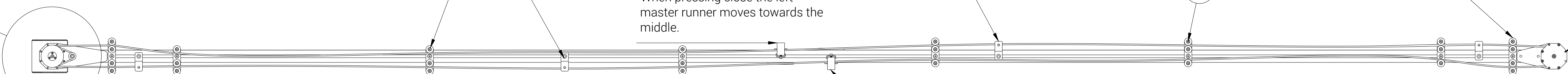


Example rope pulley



Princip Montage Motordrag



All wheels and brackets have to be turned the correct way or the arm of the master runner will collide with them.

When pressing close the left master runner moves towards the middle.

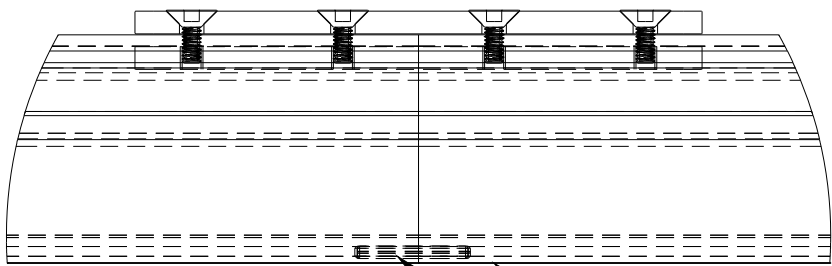
Make sure the rope arm and overlap arm is on the correct side.

Important! This is an example and should not be considered definative, different scenarios has to be considered and taken into account.

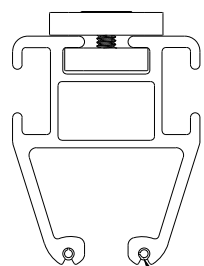
If possible, prepare the whole track before installing it in the ceiling. Otherwise we suggest preparing as much as possible on the ground and then lift the track up in sections.

- 1. Offset ceiling bracket
- 2. Rope Support 3-wheel
- 3. Rope Support 4-wheel
- 4. Return Pulley
- 5. Master Runner
- 6. Motor

C (1:2)



D (1:2)




Drill out one of the tracks with a 3.5mm drill to make it easier to push the tracks together.

Tap the pins in to the track that has not been drilled, put the slightly offset from each other.

Pin

Debur and break sharp edges
General tolerances according to ISO-2768 mK

Title: Rope and Motor setup example	Drawn by: MF	Approved by:	 PRIEBE-SCANRIG AB MALMGATAN 18 602 23 NORRKÖPING +4610-2115050 WWW.PSRIG.COM
Project name: Flexrail	Project No:		
Description:	Drawing name: Rope and motor setup example	Rev:	
	Scale: 1:10	Date:	
	Size: A1	Sheet:	