

PRODUCT DATA SHEET

StageDex is based on a special extruded aluminium profile.
The top board is glued to the frame to reduce noise and vibration.
All decks are available in metric and imperial sizes.

TOP LINE SERIE

- Internal reinforcement of corner
- Standard spigot entry on the topside of the deck to attach EasyRail system
- Birch plywood, water resistant quality
- Glued in 15 mm wooden plate
- Non-slid hexagon layer
- Loading capacity 750 kg/m²

All data based on a standard deck of 2 x 1m

Calculated with 1/10 of the vertical load transferred into a horizontal load (conform DIN 15921 / EN 13814)

Loading types (for all decks except Acrylic)

Uniformly distributed load	750 kg/m ²
Pointload F1	350 kg
Pointload F2	210 kg
Pointload F3	500 kg

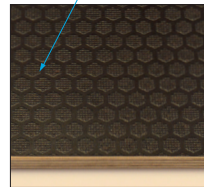
The pointload should be applied to a minimum area of 50 x 50 mm.
Pointload to be placed as indicated on drawing.
1 pointload total allowed.

Allowable loading for different leg types					
LEG TYPES	UNIFORMLY DISTRIBUTED LOAD kg/m ²				
STAGE HEIGHT IN CM	80 cm	100 cm	120 cm	160 cm	180 cm
StageDex: Tube 43 x 3 (EN AW 6082 T6)	750	500	500	350	n.a.
LiteDeck: Tube 48 x 4 (EN AW 6082 T6)	750	750	500	500	350
Profile 40 x 40 x 3 (EN AW 6082 T6)	750	500	500	500	350
Tube 48 x 3 (S235JR)	750	750	500	500	500
Telescopic leg	stage height 450 mm - 1400 mm 750 - 350 kg/m ²				
	450 < 800 mm	800 < 1200 mm	1200 < 1400 mm		
	750 kg	500 kg	350 kg		

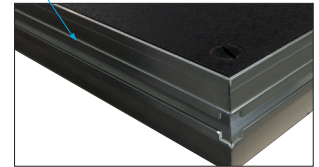
= Prolyte standard tube

n.a. = not allowed

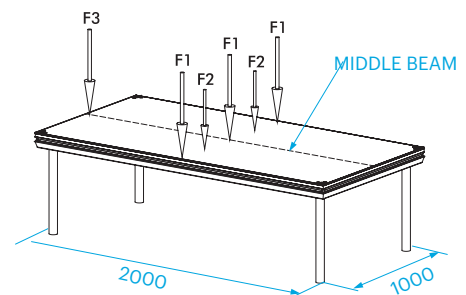
All data based on a standard deck of 2 x 1m



SM-D-T
Birch plywood non slid top layer, non permanent outdoor use



Topline frame, reinforcement corner



Technical Specifications	
Types	standard, standard arched, basic
Frame	Aluminium (EN AW 6063 T6)
Top board	Plywood
Legs	48 x 3 mm (EN AW 6082 T6)
Legs with adjustable feet	48 x 3 mm (EN AW 6082 T6), with steel spindle on pvc base
Telescopic leg	48 x 4 / 60 x 5 mm (EN AW 6082 T6)
Maximum load	750 kg/m ² UDL
Self weight	35,6 kg