

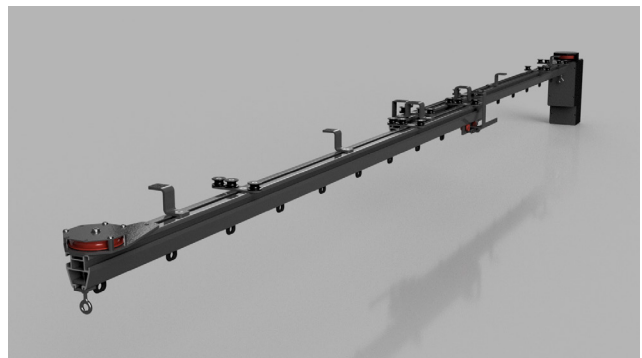
# FlexRail

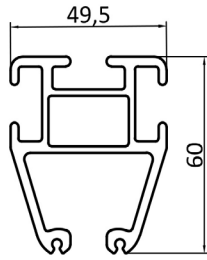
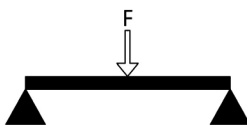
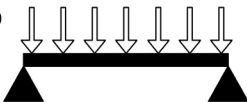
FlexRail is developed in Sweden and designed to meet every need of the event industry. With a flexible and strong construction, FlexRail saves time on installations and lasts year after year. Many accessories fit both rope and motor driven operation. This allows you to quickly deliver the solution your customer needs with a minimal warehouse cost. All components are of high quality materials and with a powder coated or anodized surface finish. The system is well tested in our own facilities as well as externally.



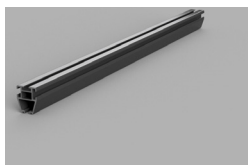
- Aluminium profile W: 49,5mm x H: 60mm
- Self-weight 1,95kg/m + accessories
- Matte black anodized
- Walk-along, cord or motor operation
- Material: EN AW 6063 - T6
- Calculated according to EuroCode 9
- Available standard curves up to 900mm radius
- Available in special shapes and configurations
- Black, white, silver as standard, custom color on request

- Motor integrated to the rail with cord tensioner
- Powerful motor with a continuous output of 300W (900W peak)
- Integrated drive electronics with 4096 PPR encoder
- External limit switches for full open & closed
- One extra programmable stop position through the encoder
- Powercon input 1x230V 50hz
- Connector for control unit (or external control e.g. DMX/Crestron)
- Variable speed up to 400mm/s
- Different speeds optional
- Additional stop positions optional

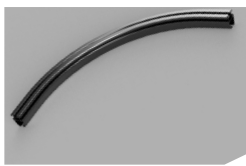


	LOADTABLE (5MM DEFLECTION)		
	LENGHT [M]	CENTRE POINT LOAD [KG]	UNIFORMLY DISTRIBUTED LOAD [KG]
			
1.0 M	425 KG	685 KG	
2.0 M	50 KG	85 KG	
3.0 M	15 KG	25 KG	

Warning! All other load-bearing components need to be checked for suitability of the application



**FlexRail Straight Profiles**  
500-2811  
00 - 4000mm, black anodized  
04 - 5000mm, black anodized  
  
White (-W), Silver (-S) &  
Custom colour (-C)



**FlexRail Curved Profiles**  
500-2811  
01 - 90° R:500mm, black anodized  
02 - 90° R:700mm, black anodized  
03 - 90° R:900mm, black



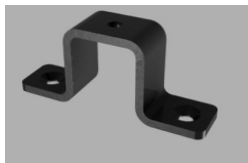
**FlexRail Ceiling & Spacer Mounting Plate\***  
500-2812  
00 - powder coated black  
  
White (-W), Silver (-S) &  
Custom colour (-C)



**FlexRail Wall Bracket Single Rail\***  
500-2812  
01 - 8mm, powder coated black  
  
White (-W), Silver (-S) &  
Custom colour (-C)



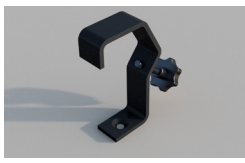
**FlexRail Wall Bracket Double Rail\***  
500-2812  
02 - 8mm, powder coated black  
  
White (-W), Silver (-S) &  
Custom colour (-C)



**FlexRail Ceiling Bracket Single & Double Rail\***  
500-2812  
03 - powder coated black  
  
White (-W), Silver (-S) &  
Custom colour (-C)



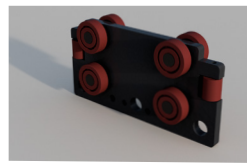
**FlexRail Ceiling Bracket Offset Single Rail\***  
500-2812  
04 - powder coated black  
  
White (-W), Silver (-S) &  
Custom colour (-C)



**FlexRail Hook Clamp 48-51mm\***  
500-2812  
05 - powder coated black  
  
White (-W), Silver (-S) &  
Custom colour (-C)



**FlexRail 2-Wheel Nylon Runner with Support**  
500-2813  
00 - black/red  
  
White/Red (-WR), Silver/Red (-SR) &  
Custom/Red (-CR)



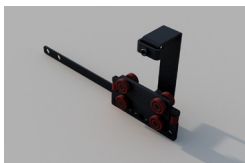
**FlexRail Master Runner Walk-Along**  
500-2813  
02 - black/red  
  
White/Red (-WR), Silver/Red (-SR) &  
Custom/Red (-CR)



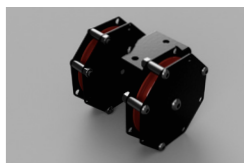
**FlexRail Master Runner Walk-Along & Overlap Arm**  
500-2813  
03 - black/red  
  
White/Red (-WR), Silver/Red (-SR) &  
Custom/Red (-CR)



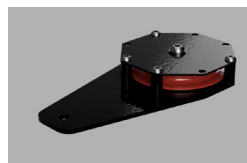
**FlexRail Master Runner Rope & Motor Operation**  
500-2813  
06 - black/red  
  
White/Red (-WR), Silver/Red (-SR) &  
Custom/Red (-CR)



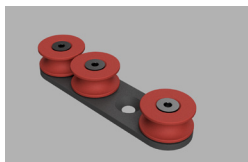
**FlexRail Master Runner with Overlap Arm**  
500-2813  
07 - black/red  
  
White/Red (-WR), Silver/Red



**FlexRail Head Pulley\***  
500-2814  
01 - black/red  
  
White/Red (-WR), Silver/Red (-SR) &  
Custom/Red (-CR)



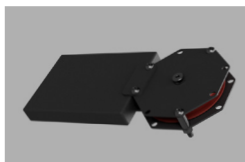
**FlexRail Return Pulley\***  
500-2814  
02 - black/red  
  
White/Red (-WR), Silver/Red (-SR) &  
Custom/Red (-CR)



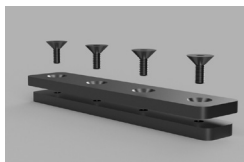
**FlexRail Top Guide\***  
500-2814  
03 - 3 wheels, black/red  
04 - 4 wheels, black/red  
  
White/Red (-WR), Silver/Red (-SR) &  
Custom/Red (-CR)



**FlexRail Tensioner Pulley**  
500-2815  
02 - floor mounted, black/red  
  
White/Red (-WR), Silver/Red (-SR) &  
Custom/Red (-CR)



**FlexRail Tensioner Pulley**  
500-2815  
01 - hanging weight, black/red  
10 - cord 8mm, rope operated, black  
  
White/Red (-WR), Silver/Red



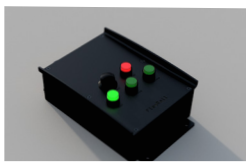
**FlexRail Standard Joint Connector with Pins\***  
500-2816  
00 - black  
  
White (-W), Silver (-S) &  
Custom colour (-C)



**FlexRail Endstop**  
500-2816  
01 - black  
  
White (-W), Silver (-S) &  
Custom colour (-C)



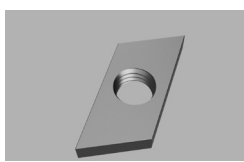
**FlexRail Motor Unit FR-200\***  
500-2817  
00 - 1x230V, programmable, black  
03 - cord 5mm, aramid, motor operation, black



**FlexRail Control Unit FRC-200**  
500-2817  
05 - black  
  
White (-W), Silver (-S) &  
Custom colour (-C)



**FlexRail Limit Switch with Bracket & Runnerplate\***  
500-2817  
10 - black  
  
White (-W), Silver (-S) &  
Custom colour (-C)



**FlexRail Sliding Slot Nut**  
500-2818  
01 - M8



**FlexRail Sliding T-head Bolt**  
500-2818  
02 - M8x20mm  
03 - M8x30mm  
04 - M8x50mm

(\* = Sliding Slot Nut and T-head Bolt included)