

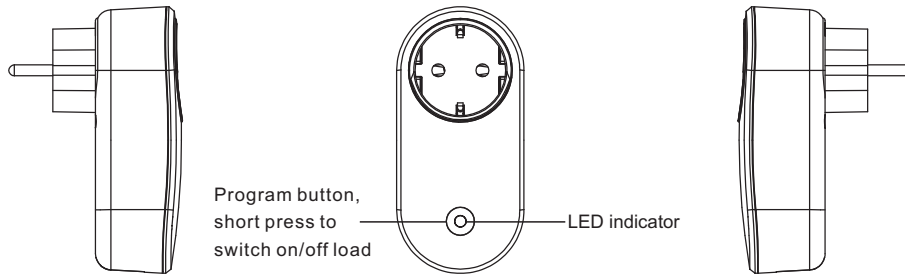
# Zigbee Smart Plug



70110005

**Important:** Read All Instructions Prior to Installation

## Function introduction



## Product Data

Zigbee profile	0x0104(ZHA)
Device ID	0x000A(Plug-in Unit)
Radio Frequency	2.4GHz
Input Voltage	AC200-240V, 50/60Hz
Max. Load	16A
Over Current Protection	16.1A
Operating temperature	0 to 40°C
Relative humidity	8% to 80%
Dimensions	114.8×54.8×74.7(mm)

LED Indicator State	Definition (16.1A Over Current)
Flashes red slowly	Over current
Stays solid orange	Load power > 2200W
Stays solid yellow	Load power 2001-2200W
Stays solid green	Load power 1501-2000W
Stays solid cyan	Load power 1001-1500W
Stays solid blue	Load power <= 1000W
Flashes purple slowly	Firmware updating via OTA
Stays solid white at a low brightness	Load switched off

- ZigBee smart plug based on latest ZigBee 3.0 protocol
- Enables to control ON/OFF of the load, supports max. 16 scenes
- ZigBee end device that supports Touchlink commissioning
- Supports find and bind mode to bind a ZigBee remote
- Supports zigbee green power and can bind max. 20 zigbee green power switches
- Supports over current protection and power metering, enables to report power consumption to gateway
- Waterproof grade: IP20

## Safety & Warnings

- DO NOT install with power applied to device.
- DO NOT expose the device to moisture.

## Operation

1.Plug the smart plug into AC power source.

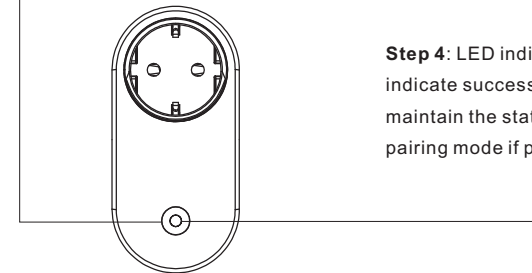
2.This ZigBee device is a wireless receiver that communicates with a variety of ZigBee compatible systems. This receiver receives and is controlled by wireless radio signals from the compatible ZigBee system.

### 3. Zigbee Network Pairing through Coordinator or Hub (Added to a Zigbee Network)

**Step 1:** Remove the device from previous zigbee network if it has already been added to, otherwise pairing will fail. Please refer to the part "**Factory Reset Manually**".

**Step 2:** From your ZigBee Controller or hub interface, choose to add lighting device and enter Pairing mode as instructed by the controller.

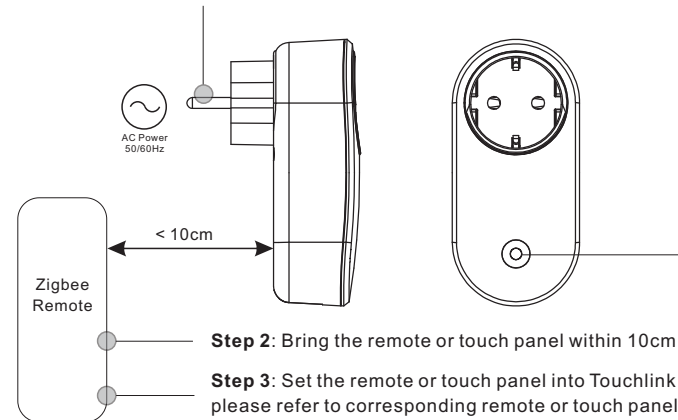
**Step 3:** Short press "Program" button 3 times continuously to set the device to network pairing mode, LED indicator will flash white fast.



**Step 4:** LED indicator will flash white 6 times to indicate successful pairing. LED indicator will maintain the status before entering into network pairing mode if pairing fails.

### 4. TouchLink to a Zigbee Remote

**Step 1:** Short press "Prog" button 4 times (Or re-power on the device) to start Touchlink commissioning, 180S timeout. Once timeout, repeat the operation.



**Step 2:** Bring the remote or touch panel within 10cm of the lighting device.

**Step 3:** Set the remote or touch panel into Touchlink commissioning, please refer to corresponding remote or touch panel manual to learn how.

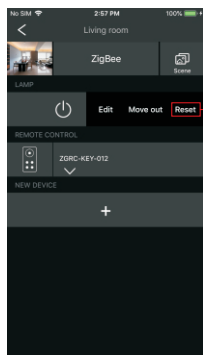
**Note: 1) Directly TouchLink (both not added to a ZigBee network), each device can link with 1 remote.**

**2) TouchLink after both added to a ZigBee network, each device can link with max. 30 remotes.**

**3) To control by both gateway and remote, add remote and device to network first then TouchLink.**

**4) After TouchLink, the device can be controlled by the linked remotes.**

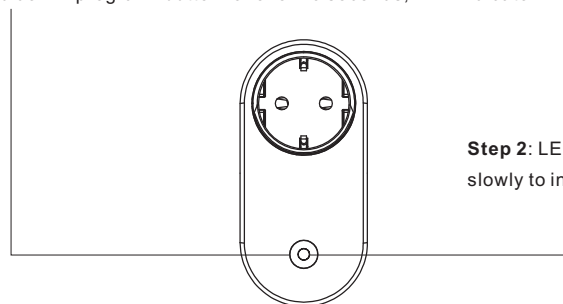
## 5. Removed from a ZigBee Network through Coordinator or Hub Interface



From your ZigBee controller or hub interface, choose to delete or reset the lighting device as instructed. LED indicator of the plug blinks white 3 times to indicate successful reset.

## 6. Factory Reset Manually

**Step 1:** Press and hold down “program” button for over 10 seconds, LED indicator will flash white fast.

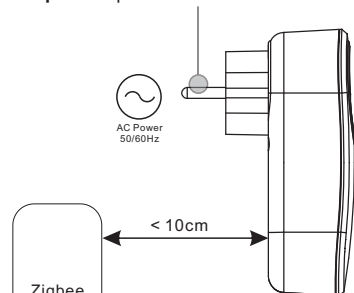


**Step 2:** LED indicator will blink yellow slowly to indicate successful reset.

## 7. Factory Reset through a Zigbee Remote (Touch Reset)

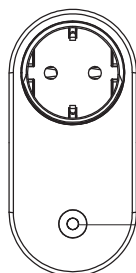
**Note:** Make sure the device already added to a network, the remote added to the same one or not added to any network.

**Step 1:** Re-power on the device to start TouchLink Commissioning, 180 seconds timeout, repeat the operation.



**Step 2:** Bring the remote or touch panel within 10cm of the lighting device.

**Step 3:** Set the remote or touch panel into Touch Reset procedure to reset the device, please refer to corresponding remote or touch panel manual to learn how.

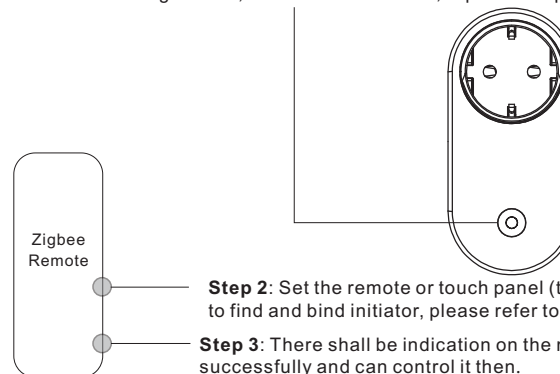


**Step 4:** There shall be indication on the remote for successful reset and LED indicator of the plug will flash white 3 times.

## 8. Find and Bind Mode

**Note:** Make sure both the device and remote are added to the same gateway that supports find and bind.

**Step 1:** Short press “Prog.” button 3 times to start Find and Bind mode (LED indicator flashes white slowly) to find and bind target node, 180 seconds timeout, repeat the operation.

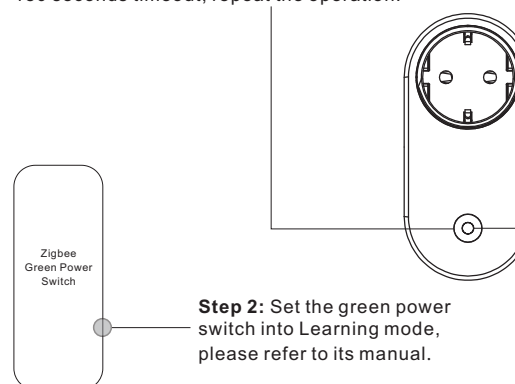


**Step 2:** Set the remote or touch panel (target node) into find and bind mode, and enable it to find and bind initiator, please refer to corresponding remote or touch panel manual.

**Step 3:** There shall be indication on the remote or touch panel that it bind the device successfully and can control it then.

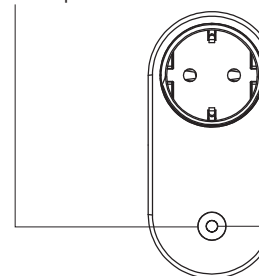
## 9. Learning to a Zigbee Green Power Switch

**Step 1:** Short press “Program” button 4 times to start Learning to GP switch mode (LED indicator flashes twice), 180 seconds timeout, repeat the operation.



**Step 2:** Set the green power switch into Learning mode, please refer to its manual.

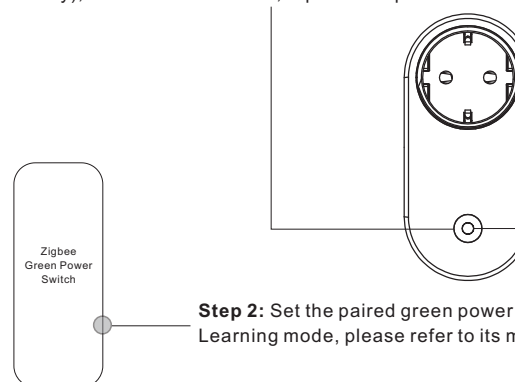
**Note:** Each device can learn to max. 20 zigbee green power switches.



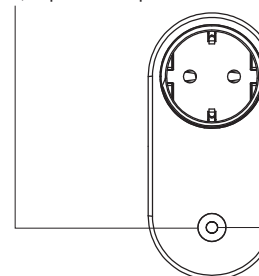
**Step 3:** LED indicator will flash twice to indicate successful learning. Then the switch can control the device.

## 10. Delete Learning to a Zigbee Green Power Switch

**Step 1:** Short press “Program” button 3 times to start delete Learning to GP switch mode (LED indicator flashes slowly), 180 seconds timeout, repeat the operation.



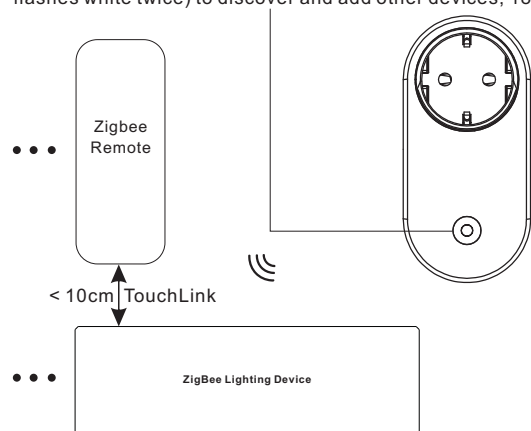
**Step 2:** Set the paired green power switch into Learning mode, please refer to its manual.



**Step 3:** LED indicator will flash 4 times to indicate successful deleting.

## 11. Setup a Zigbee Network & Add Other Devices to the Network (No Coordinator Required)

**Step 1:** Short press “Program” button 4 times to enable the device to setup a zigbee network (LED indicator flashes white twice) to discover and add other devices, 180 seconds timeout, repeat the operation.



**Step 2:** Set another device or remote or touch panel into network pairing mode and pair to the network, refer to their manuals.

**Step 3:** Pair more devices and remotes to the network as you would like, refer to their manuals.

**Step 4:** Bind the added devices and remotes through Touchlink so that the devices can be controlled by the remotes, refer to their manuals.

**Note: 1) Each added device can link and be controlled by max. 30 added remotes.**

**2) Each added remote can link and control max. 30 added devices.**

## 12. ZigBee Clusters the device supports are as follows:

### Input Clusters

- 0x0000: Basic • 0x0003: Identify • 0x0004: Groups • 0x0005: Scenes • 0x0006: On/off
- 0x0402: temperature measurement • 0x0702: Simple Metering • 0x0b04: Electrical Measurement
- 0x0b05: Diagnostics • 0x1000: ZLL Commissioning

### Output Clusters

- 0x0003: Identify • 0x0019: OTA

## 13. OTA

The device supports firmware updating through OTA, and will acquire new firmware from zigbee controller or hub every 10 minutes automatically.