



GigaJet20 Pro

GigaJet20 Pro Converter is an intelligent Ethernet / DMX converter protocols with functions of merging (merging), data backup and is an effective solution to control lighting equipment working on base of DMX512 interface. The feature of the converter is its versatility, which is expressed in the possibility of various transformations, mergers (merging), DMX512, RDM (ANSI E1.20), ArtNet protocols (1,2,3,4), sACN (project, release), KiNet (v1, v2), RTTrPL, data transfer of these protocols via Ethernet, with functions redundancy, as well as the construction of various combinations of reception / transmission of signals. The device can be powered simultaneously (for the purpose of a backup power source) or separately, using a conventional 110/250 V network, and using IEEE 802.3af (Power over Ethernet (PoE)) standard. To connect additional equipment via Ethernet, the converter has 10/100/1000 Mbps switch integrated media converter for one SFP module and equipped with four loop-through (TRUE) DMX ports. To provide emergency lighting functions in case of fire or In other emergency situations, the converter is equipped with an input for two triggers. To configure the equipment, you can use built-in Web interface, ArtGate Setting utility, third-party software supporting the ArtNet protocol, or a unique specially developed software product ARISTO. The device is designed in a housing for installation in a 19-inch "rack" at positive temperatures indoors and outdoors sites. Flexibility in the placement of the device its compactness, low weight, small depth of 110 mm, the method of installation on a truss and the fact that the converter can only occupy one height (1U) in a 19 "rack.



Benefits

- Rack form factor 2U 11 cm deep with IP20 protection
- Maintaining performance under voltage up to 305 V
- Supports four TRUE DMX port
- Supports three Ethernet ports
- Supports DMX512, ArtNet (1,2,3,4) protocols, RDM (ANSI E1.20), sACN (Draft, Release), KiNet (v1, v2), RTTrPL
- Intelligent indication of operating modes
- RDM protocol filtering function (ANSI E1.20)
- Save function for setting profiles
- Galvanic isolation of DMX ports
- Fixed IP support to access the settings.
- Intuitive web interface.
- Supports various merging modes such as HTP, LTP, AUTO, PRIORITY
- Supports one SFP module
- Supports two trigger inputs for external events and alarms
- Free cooling function without use fans and holes in the case
- Power connector powerCON TRUE1

Application area

- For use in various halls and sites with need to transmit more DMX streams using Ethernet.
- For control and flexible lighting control via a single Ethernet network
- To ensure the conversion of video content of the media server to DMX streams when using equipment of the DMX512 standard.
- To ensure interaction between various modern software and various DMX fixtures.
- For real-time control of video projectors and laser devices supporting ArtNet or sACN, from DMX console.
- To ensure work with CAST BlackTrax equipment using RTTrPL protocol

Technical specifications

Mechanical

Housing: shallow installation depth in a rack

Material: metal

Dimensions, mm: 482 (L) x 70 (H) x 110 (W)

Weight: 1.5 kg

Mounting: in a rack

Power & Electrical

Power supply: ~ 100-240 V, 50/60 Hz,
0.25 A, PoE

Max power consumption: 5W

Environmental

Operating temperatures: 0 ... + 60 ° C

Storage temperatures: -50 ... + 70 ° C

Max. relative humidity: 95%

IP Rating: IP 20

Certificates: EAC, CE, RoHS

Warranty: 36 months

Control / Data Connections

Supported protocols: DMX512, RDM,
ArtNet (1,2,3,4), sACN draft, release, KiNet (v1, v2),
RTTrPL

Refresh rate DMX data: 44Hz

Inputs / Outputs

DMX ports: 20

DMX connectors: 4 XLR (5) M, 16 XLR (5) F

Ethernet ports: 3 (10/100/1000 Base-TX), PoE

Ethernet connectors: RJ-45 / etherCON

Optical connectors: 1 SFP

Trigger connectors: terminal block

Configuration / Indication

Configuration: web interface, ArtGate settings

Indicators: LED for DMX, Ethernet and SFP header

Package Contents

GigaJet20 Pro

Terminal block for connecting trigger inputs

Power cable

Product line

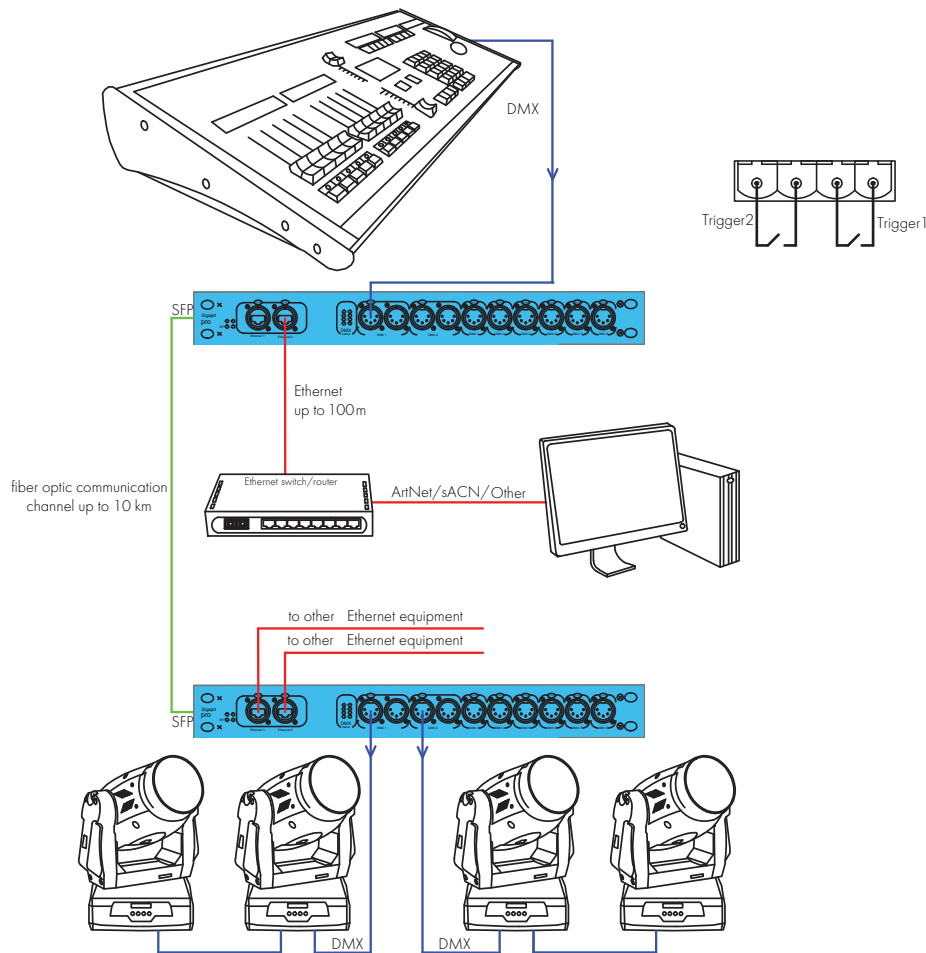
Modification:

GigaJet20 Pro

Vendor Code

GJP-5-20D3EF

Connection diagram



Specifications and appearance of Sandrax Electronics brand equipment are subject to change without notice.

Accessories

Name

Ethernet cable etherCON, 1.5m
 Power cable with powerCON TRUE1 connector (female), 1.5 m
 Power cable Schuko Type F (plug) / powerCON TRUE1 (socket), 1.5m
 Power cable BS 1363 Type G (plug) / powerCON TRUE1 (socket), 1.5 m
 Power cable powerCON TRUE1 (socket) / powerCON TRUE1 (plug), 0.5 m
 DMX cable (5-pin) M / (5-pin) F, 0.5m
 DMX cable (5-pin) M / (5-pin) F, 3m
 Adapter (5-pin) M / (3-pin) F
 Adapter (5-pin) F / (3-pin) M
 SFP module 1Gbit multimode
 SFP module 1Gbit single-mode
 Rack Mount Kit for Pro Series
 Clamp Mount Kit (2U) for Pro Series Chassis

Vendor Code

ACC-CCE-X/EC15
 ACC-CCP-O/PCT15
 ACC-CCP-F/PCT15
 ACC-CCP-G/PCT15
 ACC-CCE-X/PCT05
 ACC-CCDMX-5F/5M05
 ACC-CCDMX-5F/5M3
 ACC-AD-N5M/N3F
 ACC-AD-N5F/N3M
 ACC-AD-SFP/MOPT
 ACC-AD-SFP/OOPT
 ACC-MK-PR-RAC
 ACC-MK-1U(PRO)-CLA