



Splitter Duo Board

Multi-channel DMX splitter/repeater

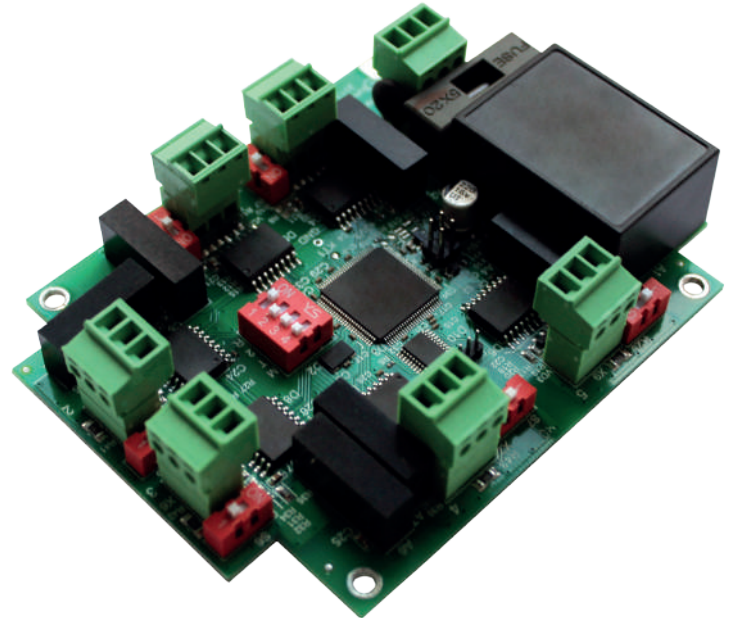
Splitter Duo Board is dual-channel device with 6 DMX input/output ports that operates as a regular splitter with 1 input and 5 outputs as well as two separated 1-to-2 splitters. All input and output channels are galvanically isolated from each other. The device is powered by 100-250V industrial AC mains, power consumption is less than 5 watts. Input, output DMX cables, and power cables are connected by terminal blocks.

Application

Supports bidirectional communication (DMX512 and RDM)

No buttons

OEM board ready for integration into fixtures, furniture, custom cases etc



Supports RDM



UltraStart



Galvanically Isolated Ports



Natural Heat Convection

Splitter Duo Board

Multi-channel DMX splitter/repeater

Version: 1.00
10.08.2020

Technical Specifications

Mechanical

Housing: no
Material: plastic
Dimensions, mm: 103(D) x 19(H) x 79(W)
Mass: 0.15 kg
Mounting: Stage equipment, lighting fixtures, etc.

Power & Electrical

Power supply: ~100-250 VAC, 50/60 Hz
Input Power (max): 5 W
Mains Fuse: 0.5 A

Environmental

Operating Temperature: -40...+60°C
Storage Temperature: -50...+70°C
Operating Relative Humidity (max): 95%
IP Rating: no
Certification: CE, RoHS
Warranty: 36 month (return to base)

Control / Data Connections

Supported protocols: DMX512, RDM
DMX data refresh rate: 44 Hz

Inputs / Outputs

DMX input ports: 1 or 2 isolated
DMX output ports: 4 or 5 isolated
DMX connectors: 15EDGVC terminal blocks

Configuration / Indication

Setup: by DIP switchers
Indication: LED for DMX input

Package Contents

Splitter Duo Board

Product Line

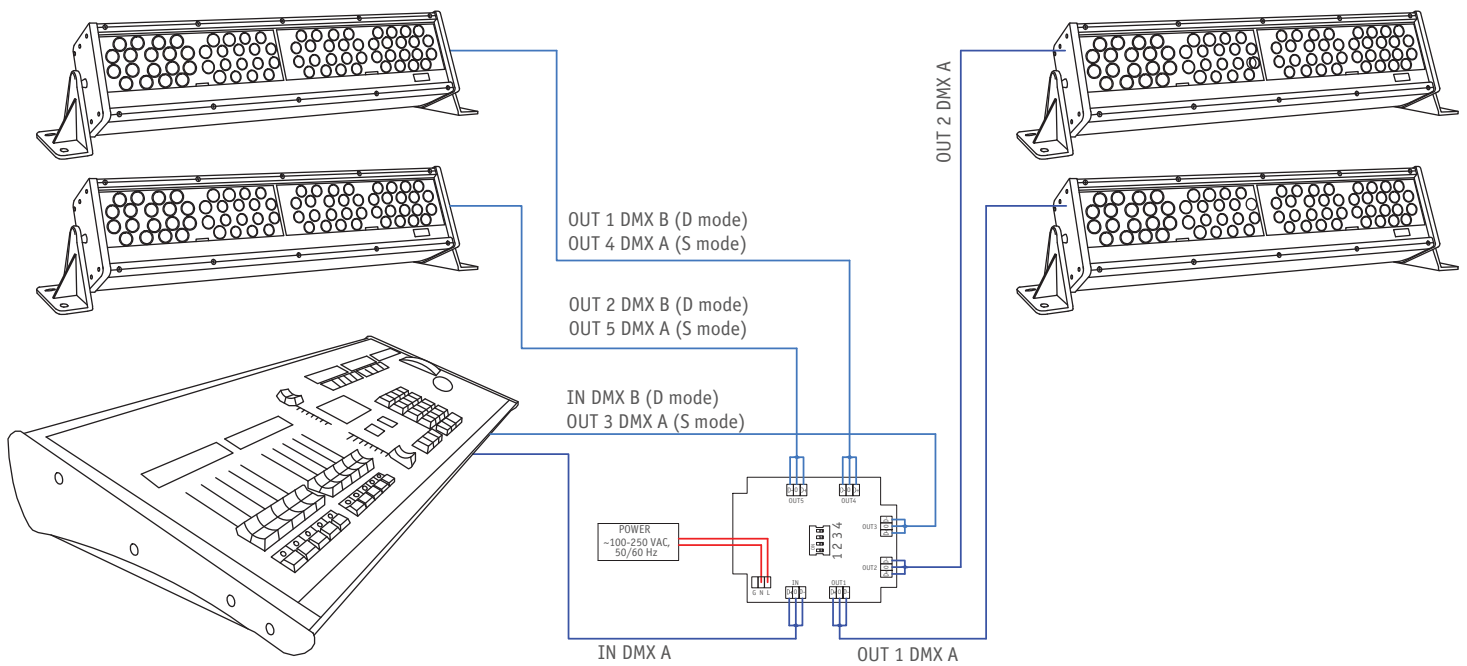
Name	Modification	Product code
Splitter Duo Board	2 DMX input/4 DMX outputs, DC 9-36V	SPAD-0-2D4D-DC-OEM
	2 DMX input/4 DMX output, AC 100-250V	SPAD-0-2D4D-AC-OEM

Splitter Duo Board

Multi-channel DMX splitter/repeater

Version: 1.00
10.08.2020

Connection Scheme



DIP switcher

	ON	OFF
SW1	RDM enabled	RDM disabled
SW2	Dual splitter mode (D-mode)	Single splitter mode (S-mode)
SW3	Full transparent mode	Dedicated input(s) mode
SW4	Bus indication mode	DMX512 indication mode

LED indication

	DMX512 mode	BUS mode
Green	Valid DMX signal	Bus is idle
Red	No DMX signal	Bus is busy
Off	Device/Section doesn't work	Device/Section doesn't work