

GENERAL SYSTEM SPECIFICATIONS

LUCENTI BLACKWAVE COLLECTION

GENERAL

Description	Pixel lighting system consisting of a controller and led bars connected by our proprietary Lucenti "PixlBus" system.
--------------------	--

USP

RGBW pixelbar with dedicated DMX controller
automatic recognition/addressing of connected devices,
bidirectional communication of status from devices
Pluggable, scalable architecture, can bus control, more pixels than conventional due to high bus speed
Long cable lengths

LUCENTI PIXLBUS

Features	<ul style="list-style-type: none">- The main function of the bus is to send pixel data to lamps or devices (frame based).- The bus allows control data and feedback data from devices.- The bus topology allows positional addressing of devices- This bus is used to communicate between controllers and lighting devices
	High speed: double speed of standard spi pixel data bus
	Auto address and discovery function Redundant pass through data system
Cabling	4 pin with M12 push lock, IP67 connector
Pinout	4 pin: GDN, +24V, data A, data B

CURRENT PRODUCTS

Pixel Bar 100 cm, Pixel bar 50 cm

1 Channel controller : PixlDrive1

Accessories

DATASHEET PIXLDRIVE1 CONTROLLER

GENERAL

Product name	PixlDrive1 controller
Description	1 channel controller with internal power supply to control 8 x BW100 or 16 x BW50 or max. 400 pixels
Article code	BW-PD1

HOUSING / MECHANICAL

Housing	Metal housing, black powder coating, IP20 rating
Mounting	M6 hole to mount safety hook, Integrated M12 thread for truss mounting

ELECTRICAL

Power input	110-240 VAC , 50/60Hz, 200W
Max operating temperature	min 40°C to 40°C

CONTROL PROTOCOLS

Supported protocols	Art-Net v4 sACN (MultiCast IP)
----------------------------	-----------------------------------

CONNECTIVITY

Network	Ethercon: 2x - 100 Mbit
Power	PowerCon True 1 IN + PowerCon True 1 OUT
WiFi	WiFi inside

PIXEL OUTPUT

Voltage	24V DC
Connector	Plastic M12 4 pin connector, push lock
Protocol	Proprietary Lucenti "Pixlbus" protocol
Max amount of pixelbars	1m pixelbar - BW 100: 8x 50cm Pixelbar - BW 50: 16x Max 400 pixels
Dmx channel mapping	Configurable mapping of pixels and ledbars to dedicated dmx universes and channels
Max no of dmx universes	4

FUNCTIONS

Basic functions	Artnet or sACN to control the pixel bars Standalone test and effects mode Auto configuration Redundant pass through of data
------------------------	--

USER INTERFACE

Controls	Rotating push button knob
Display	16x2 character display for menu and status information
Web Interface	Built-in responsive web interface for advanced configuration

ACCESSORIES

Accessories	BW-RM2 Optional 19 inch rack mount bracket to mount 2 controllers side by side. Height: 1 Unit
--------------------	---



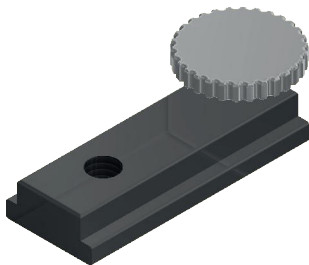
DATASHEET ACCESSORIES

MOUNTING ACCESSORIES

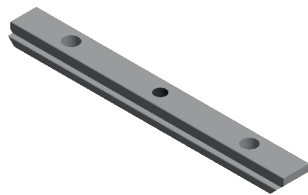
Material

Black anodized aluminum

Products List



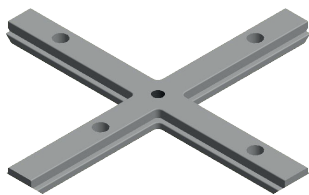
PN: BW-M0
Name: Mounting block
M6 incl. kurl screw



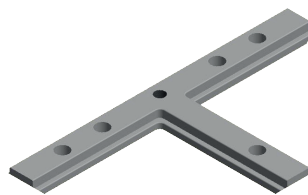
PN: BW-M1
Name: I-frame coupler



PN: BW-M2
Name: L-frame coupler



PN: BW-M3
Name: X-frame coupler



PN: BW-M4
Name: T-frame coupler



PN: BW-M12M6
Name: Bus M12 -> M6

CABLES

Material	PVC outer sheat	
Connectors	M12 4pin "PixlBus" connector - IP66	
Product List	PN	Name
	BW-CA0.5	Extension cable 0.5m
	BW-CA01	Extension cable 1m
	BW-CA02.5	Extension cable 2,5m
	BW-CA05	Extension cable 5m
	BW-CA10	Extension cable 10m

COVERS

Material	PMMA	
Product List	PN	Name
	BW-FC100	Flat cover clear
	BW-FC50	Flat cover clear
	BW-FF100	Flat cover frosted
	BW-FF50	Flat cover frosted
	BW-FB100	Flat cover stealth black
	BW-FB50	Flat cover stealth black
	BW-RF100	Round cover frosted
	BW-RF50	Round cover frosted
	BW-SF100	Square cover frosted
	BW-SF50	Square cover frosted